

# Low-temperature-specific effects of *PHYTOCHROME C* on the circadian clock in *Arabidopsis* suggest that *PHYC* underlies natural variation in biological timing

Kieron D. Edwards<sup>1,4</sup>, François Guerineau<sup>2</sup>, Paul F. Devlin<sup>3</sup>, Andrew J. Millar<sup>1</sup>

<sup>1</sup> SynthSys and School of Biological Sciences, C.H. Waddington Building, University of Edinburgh, Max Born Crescent, Edinburgh EH9 3BF, Scotland, United Kingdom.

<sup>2</sup> Biologie des plantes et innovation, Université de Picardie Jules Verne, 33 rue St Leu, 80039 Amiens, France. francois.guerineau@u-picardie.fr

<sup>3</sup> School of Biological Sciences, Royal Holloway University of London, Egham, Surrey, TW20 0EX, United Kingdom. paul.devlin@rhul.ac.uk.

<sup>4</sup> Present address: BAT Ltd., Cambridge, United Kingdom. kieron\_edwards@bat.com

bioRxiv preprint version, DOI: 10.1101/030577

Please address correspondence to:  
Professor Andrew Millar  
phone: +44-131 651 3325  
e-mail: [andrew.millar@ed.ac.uk](mailto:andrew.millar@ed.ac.uk)

## Citation:

K.D. Edwards, F. Guerineau, P.F. Devlin and A.J. Millar (2015) Low-temperature-specific effects of *PHYTOCHROME C* on the circadian clock in *Arabidopsis* suggest that *PHYC* underlies natural variation in biological timing. bioRxiv, DOI: 10.1101/030577

## Keywords:

circadian rhythms, biological clocks, *Arabidopsis thaliana*, temperature, photoreceptors, gene circuit, QTL

## Author contributions

KDE and AJM designed the study. FG characterised the gn7 deletion in the Scott lab (Figure 5a). PFD analysed PHY protein content in the gn7 line (Figure 5b). KDE performed all other experiments and data analysis. AJM assembled the data, removed them from Wenden et al. Plant Journal 2011 after peer review to comply with an editorial request for greater focus, and prepared this paper.

## Funding

Work in the Millar lab was supported by BBSRC awards G19886 and E015263 to AJM. KDE was supported in part by a BBSRC graduate studentship to the University of Warwick. SynthSys is supported in part by BBSRC and EPSRC awards BB/D019621 and BB/M018040.

## Acknowledgements

We are grateful to Rod Scott and the late Garry Whitlam for supporting early work on gn7, and to Dr. James Lynne (Horticulture Research International, Wellesbourne) for REML analysis.

## SUMMARY

The circadian clock is a fundamental feature of gene regulation and cell physiology in eukaryotes and some prokaryotes, and an exemplar gene regulatory network in Systems Biology. The circadian system in *Arabidopsis thaliana* is complex in part due to its photo-transduction pathways. Analysis of natural genetic variation between *Arabidopsis* accessions Cape Verde Islands (Cvi-0) and *Landsberg erecta* (*Ler*) identified a major, temperature-specific Quantitative Trait Locus (QTL) on chromosome V that altered the circadian period of leaf movement (Edwards et al., Genetics, 2005). We tested Near-Isogenic Lines (NILs) to confirm that *Ler* alleles at this *PerCv5c* QTL lengthened the circadian period at 12°C, with little effect at higher temperatures. The *PHYTOCHROME C* gene lies within the QTL interval, and contains multiple sequence variants. Plants carrying either a T-DNA-insertion into *PHYC* or a deletion of *PHYC* also lengthened circadian period under white light, except at 27°C. *phyB* and *phyABE* mutants lengthened period only at 12°C. These results extend recent data showing *PhyC* effects in red light, confirming the number of photoreceptor proteins implicated in the plant circadian system at eleven. The connection between light input mechanisms and temperature effects on the clock is reinforced. Natural genetic variation within *PHYC* is likely to underlie the *PerCv5c* QTL. Our results suggest that functional variation within the *PHYC-Ler* haplotype group might contribute to the evolution of the circadian system and possibly to clock-related phenotypes such as flowering time. These results have previously passed peer-review, so we provide them in this citable preprint.

## INTRODUCTION

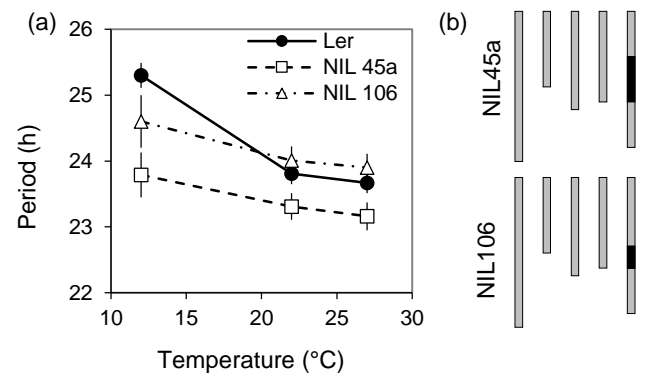
The circadian clock is a 24h endogenous timer that allows the correct temporal regulation of physiological, biochemical and developmental processes. The expression of over 30% of the *Arabidopsis thaliana* transcriptome is driven by the circadian clock (Covington et al. 2008; Michael et al. 2008; Michael and McClung 2003). Rhythmic transcriptional outputs control physiological processes such as daily rhythmic growth and photoperiodic flowering. In both cases, the mechanisms are sufficiently characterised to support mechanistic, mathematical models (Seaton et al. 2015). The clock mechanism in all organisms includes interlocked transcriptional–translational feedback loops. The clock’s rhythmic behaviour is thought to emerge from the dynamics of this clock gene circuit, which have been well characterised in *Arabidopsis* (Flis et al. 2015). The negative feedback loops in this model plant species incorporate two closely-related MYB transcription factors CIRCADIAN CLOCK ASSOCIATED1 (CCA1) and LONG ELONGATED HYPOCOTYL (LHY) that inhibit the expression of evening-expressed genes such as a pseudo-response regulator (PRR) TIMING OF CAB EXPRESSION 1 (TOC1). The expression of CCA1 and LHY is tightly regulated by other clock components, including sequential inhibition by PRR9, PRR7 and PRR5. TOC1 and other PRR genes are repressed by an Evening Complex (Hsu and Harmer 2014).

For the clock to be useful, the endogenous period must be synchronised (entrained) to match the 24-hour environmental cycle (Johnson et al. 2003). The strongest entrainment signals are temperature and light. At least four families of photoreceptors have been identified as transducing light signals to reset the clock, the blue light sensing cryptochromes (*CRY1* and *CRY2*), the red/far-red light (R/FR) sensing phytochromes (*PHYA*, *PHYB*, *PHYD*, *PHYE*), (Devlin and Kay 2000; Somers et al. 1998; Yanovsky et al. 2000), the UV-B photoreceptor UVR8 (Feher et al. 2011) and a family of three F-box proteins, including *ZEITLUPE* (*ZTL*) (Baudry et al. 2010). These ten photoreceptors transduce light signals to regulate clock genes and proteins (Fankhauser and Staiger 2002), with both specialised and overlapping roles. *PHYC* alone has little effect on other phenotypes in the absence of other phytochromes (Hu et al. 2013), and no role for *PhyC* in the *Arabidopsis* clock had been confirmed until, during the preparation of this paper, a long-period phenotype was reported under red light (Jones et al. 2015). In barley, some *PHYC* alleles have also shown circadian effects (Pankin et al. 2014; Nishida et al. 2013) and in *Arabidopsis*, natural genetic variation in related traits has been associated with *PHYC* (Balasubramanian et al. 2006).

Temperature effects on circadian clocks include entrainment by temperature cycles, whereas under constant temperatures, the circadian period is unusually constant across a physiological temperature range (termed ‘temperature compensation’). Among multiple mechanisms implicated in how ambient thermocycles influence the clock are alternative RNA splicing, in *Neurospora crassa*, *Drosophila melanogaster* (Colot et al. 2005; Low et al. 2008) and *Arabidopsis* (James et al. 2012), and protein phosphorylation in *N. crassa* (Mehra et al. 2009). Mutants of some clock genes alter temperature compensation (Gould et al. 2006; Salome et al. 2010). A systems biology analysis of ambient temperature effects across the clock mechanism revealed a strong dependence on light quality, and suggested that light and temperature signalling converged upstream of the clock, such that photoreceptor pathways had a significant role in temperature responses (Gould et al. 2013). This work indicated multiple targets of temperature effects in the clock mechanism, including the morning genes implicated by Salome et al. 2010 and James et al. 2012, as well as the Evening Complex implicated by Mizuno et al. (2014).

Quantitative genetic approaches have identified genetic variation in clock-affecting genes (Anwer and Davis 2013), including Quantitative Trait Loci (QTL) in *Arabidopsis* (de Montaigu et al. 2015; Michael et al. 2003; Swarup et al. 1999). Our earlier work tested circadian period at three temperatures, identifying multiple QTL (Edwards et al. 2005). Here we propose *PHYC* as a candidate gene for a clock-affecting QTL that is specific for low ambient temperature.

## RESULTS



**Figure 1. *PerCv5c* QTL effect on period, defined in Near-Isogenic Lines (NILs).**

(a) *PerCv5c* NIL periods. Mean leaf movement period versus temperature of *PerCv5c* NILs 45a (open squares) and 106 (open triangles) compared to *Ler* (filled circles) at 12°C, 22°C and 27°C. Error bars represent SEM of period estimates.

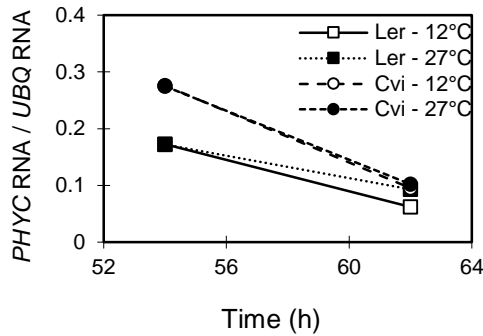
(b) Graphical genotypes of the NILs. Vertical bars represent linkage groups and colour represents *Ler* (grey) background or *Cvi* (black) genome sequences on chromosome V.

### NILs recapitulate the temperature-specific QTL effect

The *PerCv5c* QTL was identified in the *Cvi* by *Ler* (*CvL*) recombinant inbred lines (RILs) and mapped to the middle of Chromosome 5. This QTL alone accounted for 44.6% of phenotypic variation in the period of rhythmic leaf movement at 12°C (Edwards et al. 2005), by far the largest single effect observed in that study. Near isogenic lines (NILs) carrying Cape Verde Islands (*Cvi*) alleles around in the putative circadian QTL were therefore used to identify *Cvi* loci that regulate the clock, in an isogenic Landsberg *erecta* (*Ler*) background (Edwards et al. 2005). Figure 1a shows the periods of NIL45a and NIL106 at 12°C, 22°C and 27°C, with numerical values in Table 1. Both NILs had *Cvi* introgressions around the *PerCv5c* locus (Figure 1b). Both NILs had shorter circadian period compared to the *Ler* parent especially at 12°C (Figure 1a), consistent with the original QTL identification. The larger introgression of NIL45a shortened the period more than NIL106. It is possible that multiple loci in the *Cvi* region of NIL45a affect the clock but the small period effects make this difficult to confirm.

### Natural allelic variation at *PHYTOCHROME C*

*PHYC* maps within the confidence interval of *PerCv5c*, so was considered a possible candidate gene for the QTL. Quantitative RT-PCR showed that the *PHYC* alleles in both accessions were expressed under constant light conditions (Figure 2). Expression was higher in subjective day (54h in constant light) than in subjective night (62h in constant light), though possibly with lower levels of mRNA in *Ler* (Figure 2).



**Figure 2. *PHYC* expression in *Cvi* and *Ler*.**

Quantitative RT-PCR showed that both alleles were expressed, in RNA extracted from *Cvi* and from *Ler* plants at the times (54h, 62h) and temperatures (12°C, 27°C) indicated, though possibly with lower levels of mRNA in *Ler*.

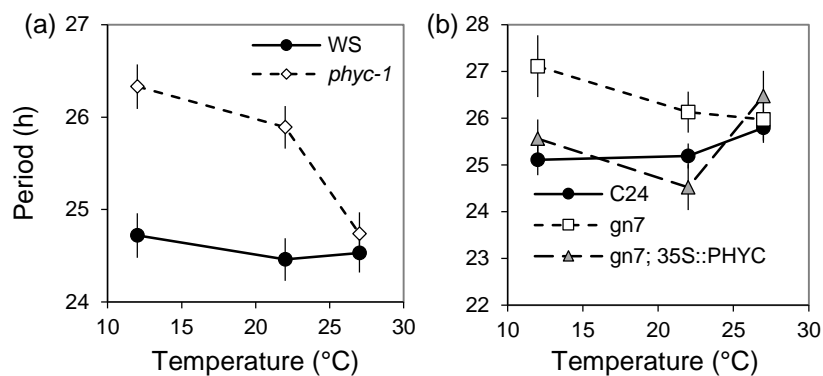
Sequence analyses for the *PHYC* gene and predicted PHYC protein revealed mutations between the *Cvi* and *Ler* backgrounds, leading to four changes in the protein sequence (Figure 3a, 3b). The AT5G35840 locus in sequences from the 1001 Genomes Project (Weigel and Mott 2009) confirmed these four changes (Figure 3c). The 1001 Genomes resource also showed that the *Cvi* sequence is close to the *Ler* haplotype rather than the *Col* reference haplotype, which is shared by *Ws*-2. The changes from *Ler* to *Cvi* amino acid sequence are A27T, S230G, T352S and H470P, all of which fall in the N-terminal domains of phytochrome before the bipartite PAS motif. At position 230, G is the amino acid in the reference *Col* genome, whereas in the other positions, the *Col* sequence is the same as *Ler* (Figure 3c).

### *phyC* mutants alter circadian period

To test a possible role for *PHYC* in the circadian clock, the *phyC-1* mutant, in a *PhyD*-deficient background *Wassilewskija-2* (*Ws*) (Franklin et al. 2003) was assayed for period at 12°C, 22°C and 27°C (Figure 4a). *phyC-1* displayed 1.6 and 1.4 hours period lengthening at 12°C and 22°C respectively, but was not significantly different from wild type at 27°C. Numerical period values and statistical tests are shown in Table 1.

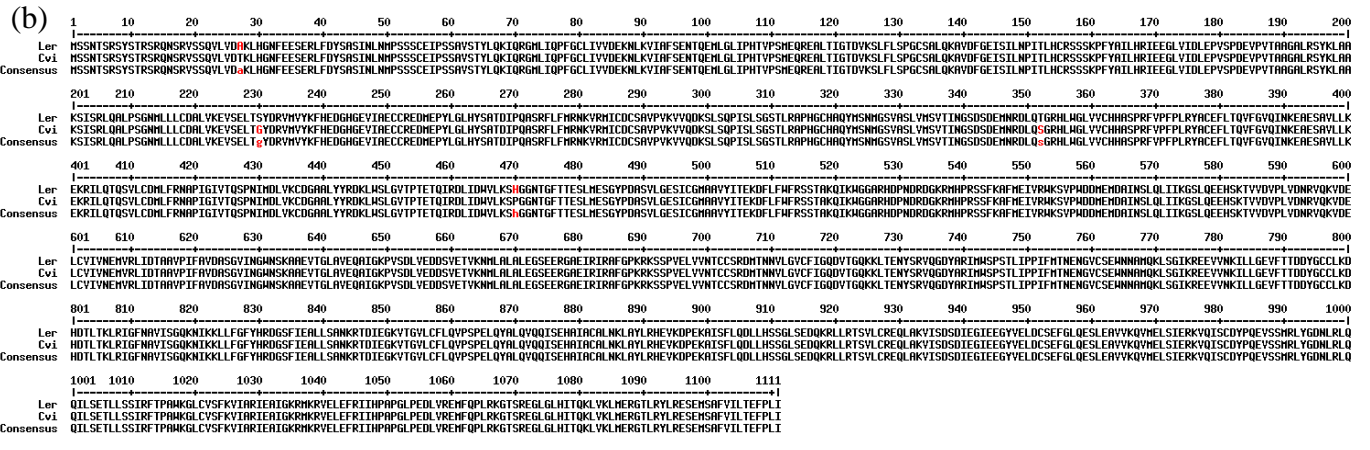
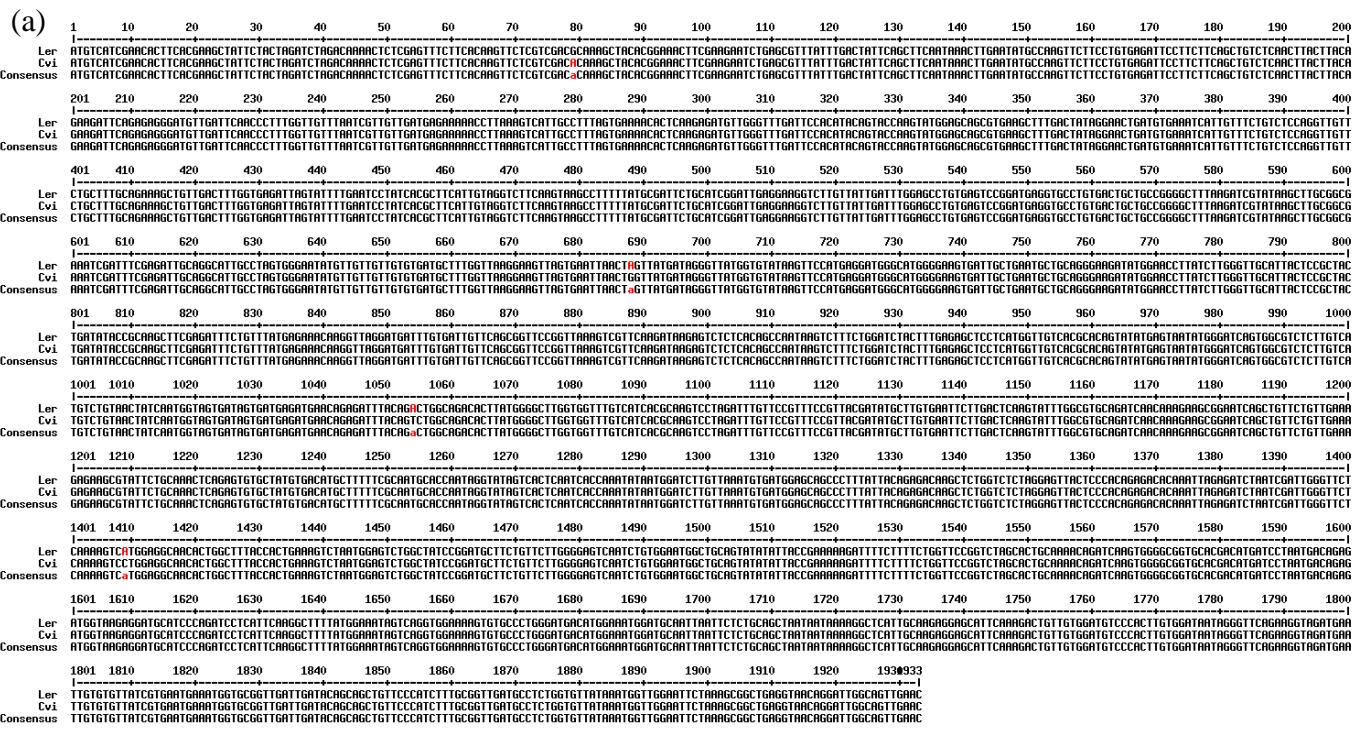
To confirm the *phyC-1* phenotype, period was tested in a second null mutant for *phyC*. The *gn7* line, first described as *gne7* by Sorensen et al. (Sorensen et al. 2002), has a large genomic deletion removing the entire *PHYC* open reading frame in a *C24* background (Figure 5a). As with *phyC-1*, significant circadian period lengthening was observed in *gn7* plants at 12°C and 22°C, but not 27°C (Figure 4b), relative to the *C24* parent line. Over expression of *PHYC* under the 35S promoter rescued this period phenotype, suggesting that the *gn7* period effect was principally mediated by the deletion of *PHYC* (Figure 4b).

*phyB-10* single mutants and *phyABE* triple mutants were tested in the same experiments. Neither mutant showed a period defect in white light at 22°C, as expected, but both lengthened period at 12°C (Figure 6; Table 2).



**Figure 4. *PhyC* controls circadian period at low ambient temperature.**

(a) Leaf movement period of *phyC-1* mutant plants compared to wild type *Ws*. (b) Leaf movement period of *C24* wild type (filled circles), *gn7* deletion mutant (open squares) and *gn7*; 35S::*PHYC* rescued line (open triangles) at 12°C, 22°C and 27°C. Error bars represent SEM of period estimates.



**Figure 3. Genomic and protein sequence alignment in Cvi and Ler.** Sequence analyses from the plants tested are shown for the (a) *PHYC* gene and (b) predicted *PHYC* protein, revealing variation between the *Cvi* and *Ler* backgrounds leading to four amino acid changes in the protein sequence (*Ler* → *Cvi*): A27T, S230G, T352S and H470P. For S230G, the *Ler* amino acid differs from the Col-0 reference. (c) corresponding analysis of *PHYC* locus AT5G35840 from the 1001 Genomes Project server (<http://signal.salk.edu/atg1001/3.0/gebrowser.php>), showing the four accessions relevant to this study: *Cvi-0* and *Ler* from the CviL RILs and NILs, and the C24 and Ws-2 genetic backgrounds for the *phyc* mutant alleles. Asterisks between *Cvi-0* and *Ler* mark the four amino acid substitutions detected in (b). Ws-2 is identical to the Col-0 reference sequence. Note the additional L substitution at the C terminus of the C24 allele. Red markers, A in reference sequence; Green markers, G in reference sequence. Alternative sequences are provided for *Cvi-0* and *Ler* in this resource (not shown) but they did not match our sequences in (a).

**DISCUSSION**

Circadian clock mechanisms include gene regulation by multiple, interlocking feedback loops, which can increase the flexibility of possible regulatory changes over evolutionary time and in the face of environmental variations. In light-grown *Arabidopsis* seedlings, multiple photoreceptors contribute light input signals, adding further complexity to the clock network.

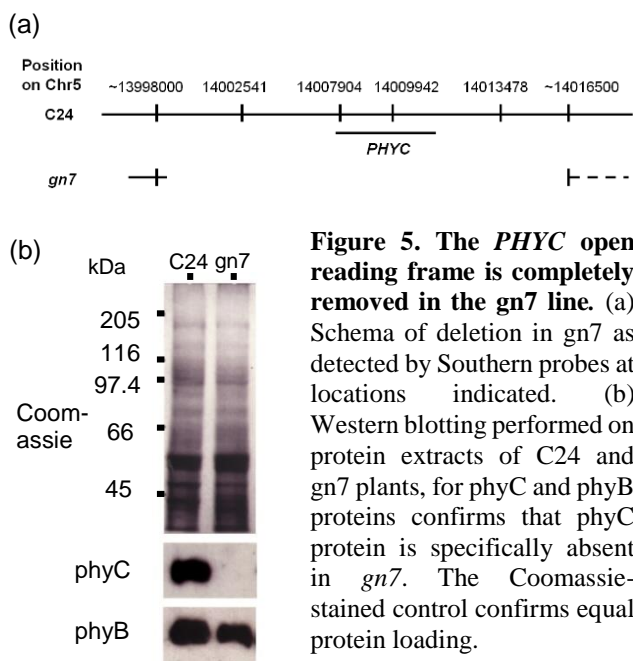
We showed that *phyC* contributes to control clock period in a temperature-specific manner under white light, adding to the four other phytochromes, two cryptochromes, UVR8 and the ZTL/FKF1/LKP2 family, and bringing the number of known circadian photoreceptor proteins in *Arabidopsis* to eleven. The rhythmic control of native *PHYC* expression (Toth *et al.* 2001) was not required for normal circadian rhythmicity, because the *gn7* mutant phenotype was rescued by a 35S mis-expression transgene (Figure 4b).

A similar phenotype was observed in the *phyb-10* and *phyabe* triple mutant, suggesting that this effect was principally mediated by *phyb* in both lines. In contrast to the *phyB* mutants, both *phyC* mutants lengthened period at 22°C as well as 12°C. Taken together, these phenotypes suggested that the *phyD* mutation in the Ws background of *phyc-1* and *phyb-10* was not uniquely required for the phenotypes observed, though interactions among the phytochromes might well contribute. Hence, *PHYB* and *PHYC* are likely the major effectors of the clock regulation detected here.

No circadian period QTL were mapped to the *PHYB* locus in Edwards *et al.* (2005). However, an epistatic interaction was suggested between markers FD.222L-Col and CH.60C, which map near to *PHYB* and *PHYC* respectively (K.D. Edwards Ph.D. Thesis, University of Warwick). This interaction suggested the possibility of the *Ler* allele of *PHYB* enhancing the period difference between the *Ler* and *Cvi* alleles of *PHYC*.

The similarity of the *phyC* mutant phenotype to the *PerCv5c* QTL effect, together with the DNA sequences, strongly suggested that allelic variation at *PHYC* contributes to or solely causes this QTL. If so, then our results further suggested that the *PHYC-Ler* allele was less active than *PHYC-Cvi*, consistent with (Monte *et al.* 2003; Balasubramanian *et al.* 2006), because *PHYC-Ler* lengthened circadian period as *phyC* null mutants also do. The haplotypes of *PHYC* across multiple accessions were defined by Balasubramanian *et al.* (2006). *Cvi* is clearly among the *Ler* haplotypes, whereas Ws-2 is among the Col haplotypes (Figure 3c). Our results suggest that *PHYC* function varies within the *Ler* haplotype group, at least at low temperature. The variation within this group may be relevant, for example, to explain the association of *PHYC* alleles within the *Ler* haplotype group to particular habitats, such as areas of high precipitation in the Iberian peninsula (Mendez-Vigo *et al.* 2011).

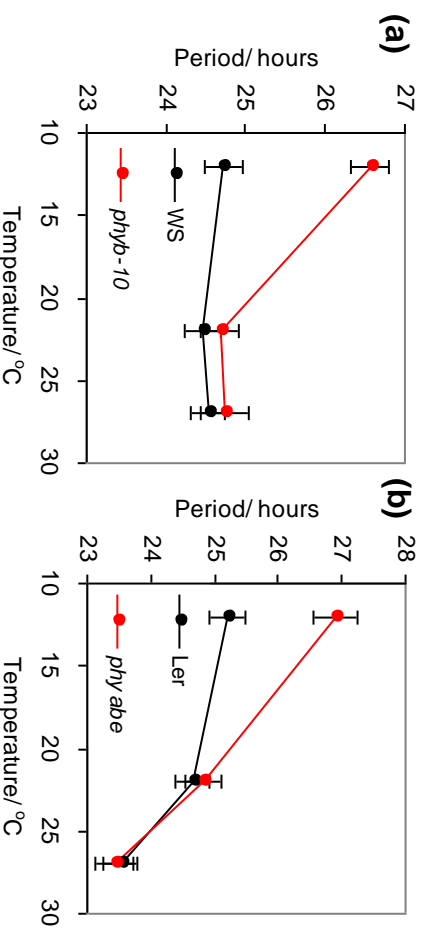
Page 6, below, shows **Figure 6. Circadian period of *phyB* single and multiple mutants. Table 2. Summary of leaf movement periods in *phy* mutants of Figs. 4 and 6.**



**Table 1. Summary of *PerCv5c* NIL leaf movement periods**

Leaf movement period of *PerCv5c* NILs at 12°C, 22°C and 27°C indicated. Data are means of n traces per line at each temperature. Significance levels of *t*-tests comparing the mean periods of NILs to *Ler* are shown (*P*).

	12°C				22°C				27°C			
	Period (h)	n	SEM	<i>P</i>	Period (h)	n	SEM	<i>P</i>	Period (h)	n	SEM	<i>P</i>
<i>Ler</i>	25.30	38	0.19		23.81	55	0.16		23.67	60	0.16	
NIL 45a	23.79	15	0.34	< 0.01	23.31	32	0.20	< 0.01	23.16	26	0.21	< 0.02
NIL 106	24.60	11	0.40	< 0.05	24.01	31	0.21	> 0.05	23.90	29	0.21	> 0.05



**Figure 6 Circadian period of phytochrome B single and multiple mutants**  
Leaf movement period of (a), *phyb-10* (b) *phy abe* mutants compared to respective wild types. See inset legends for line identity. Error bars represent SEM of period estimates.

	12°C			22°C			27°C			
	Period (h)	n	SEM	Period (h)	n	SEM	Period (h)	n	SEM	P
WS	24.72	26	0.24	24.46	30	0.23	24.53	41	0.21	
<i>phyc-1</i>	26.33	29	0.24	25.89	32	0.23	24.74	33	0.23	WS > 0.05
<i>phyb-10</i>	26.56	26	0.24	24.68	28	0.24	24.73	21	0.30	WS > 0.05
Ler	25.19	17	0.29	24.66	21	0.28	23.53	19	0.27	
<i>phy abe</i>	26.90	9	0.34	24.83	16	0.28	23.43	18	0.29	Ler > 0.05
C24	25.11	20	0.33	25.19	25	0.27	25.79	43	0.27	
gn7	27.11	9	0.66	26.13	13	0.44	25.97	13	0.50	C24 < 0.05
gn7; 35S::PHYC	25.56	17	0.41	24.52	10	0.49	26.47	8	0.54	C24 > 0.05

**Table 2. Summary of phytochrome mutant leaf movement periods**

Leaf movement period of *phy* mutants at 12°C, 22°C and 27°C indicated. Data are means of n traces per line at each temperature. Significance levels of *t*-tests comparing the mean periods of mutants to wild type are shown (*P*).

## EXPERIMENTAL PROCEDURES

### Plant material

Seeds for Arabidopsis accessions, CvL RILs and NILs used in leaf movement analysis were as described (Edwards et al. 2005), generously donated by M. Koornneef. NIL45a carries Cvi alleles in a 42-48 cM region in the middle of Chromosome 5, between markers GH.177C and HH.4451Col (Alonso-Blanco et al. 1998). NIL106 has a 15-19 cM Cvi introgression between markers GB.235-Col and GB.233C (Alonso-Blanco et al. 1998). *phyC-1* null allele contains a T-DNA insertion as previously described (Franklin et al. 2003). *phyC* deletion allele gn7 has previously described (Sorensen et al. 2002); seeds for gn7 and gn7 expressing 35S::*PHYC* were generously provided by G. Whitelam. *phyB-10* mutants were previously named *phyB-464-19* (Reed et al. 1993) in the Ws background. The *phyabe* mutant contains the *phyA-2* (Whitelam et al. 1993), *phyb-1* (Koornneef et al. 1980) and *phyE* (Devlin et al. 1998) alleles in a *Ler* background.

### Growth conditions

Growth conditions for samples used in leaf movement and RNA studies under constant light were essentially as described (Edwards et al. 2005; Edwards et al. 2010). Briefly, sterile seed were stored in 0.15% agar and stratified at 4° for 4–5 days prior to sowing on Murashige-Skoog 1.5% agar medium containing 3% sucrose. Seedlings were grown for 6 days under constant light of 55–60  $\mu\text{mol m}^{-2} \text{sec}^{-1}$  cool white fluorescent light and then entrained for 4 days at 21°–22° under (12 hr/12 hr) light/dark cycles of 75  $\mu\text{mol m}^{-2} \text{sec}^{-1}$  cool white fluorescent light.

### Measurement of leaf movement

Individual period estimates were produced from leaf-movement data as described (Edwards et al. 2005). In brief, leaf growth of Arabidopsis seedlings was imaged under constant light using a custom-built, 31-camera array. Y-axis centroid positions for each leaf were determined from the image stacks using Metamorph software. Circadian period of each leaf was estimated using the FFT-NLLS algorithm through the BRASS interface (Edwards et al., 2010). Mean period estimates for each genotype were based on data from two to four independent experiments at each temperature analysed using REML (Patterson and Thompson 1971) in the statistical package GENSTAT 5 (Payne et al. 1993) as described (Edwards et al. 2005). The significance of differences between pairs of genotypes was analysed via t-tests using the SEM estimates derived from REML.

### Molecular Assays

Quantitative RT-PCR was performed according to (Edwards et al. 2010). Phytochrome Western blotting was performed as described (Franklin et al. 2003).

## REFERENCES

- Alonso-Blanco C, El-Assal SE, Coupland G, Koornneef M (1998) Analysis of natural allelic variation at flowering time loci in the Landsberg erecta and Cape Verde Islands ecotypes of Arabidopsis thaliana. *Genetics* 149 (2):749-764
- Anwer MU, Davis SJ (2013) An overview of natural variation studies in the Arabidopsis thaliana circadian clock. *Semin Cell Dev Biol* 24 (5):422-429. doi:10.1016/j.semcdb.2013.03.006
- Balasubramanian S, Sureshkumar S, Agrawal M, Michael TP, Wessinger C, Maloof JN, Clark R, Warthmann N, Chory J, Weigel D (2006) The PHYTOCHROME C photoreceptor gene mediates natural variation in flowering and growth responses of Arabidopsis thaliana. *Nat Genet* 38 (6):711-715
- Baudry A, Ito S, Song YH, Strait AA, Kiba T, Lu S, Henriques R, Pruneda-Paz JL, Chua NH, Tobin EM, Kay SA, Imaizumi T (2010) F-box proteins FKF1 and LKP2 act in concert with ZEITLUPE to control Arabidopsis clock progression. *Plant Cell* 22 (3):606-622. doi:10.1105/tpc.109.072843
- Colot HV, Loros JJ, Dunlap JC (2005) Temperature-modulated alternative splicing and promoter use in the Circadian clock gene frequency. *Mol Biol Cell* 16 (12):5563-5571
- Covington MF, Maloof JN, Straume M, Kay SA, Harmer SL (2008) Global transcriptome analysis reveals circadian regulation of key pathways in plant growth and development. *Genome Biol* 9 (8):R130
- de Montaigu A, Giakountis A, Rubin M, Toth R, Cremer F, Sokolova V, Porri A, Reymond M, Weinig C, Coupland G (2015) Natural diversity in daily rhythms of gene expression contributes to phenotypic variation. *Proc Natl Acad Sci U S A* 112 (3):905-910. doi:10.1073/pnas.1422242112
- Devlin PF, Kay SA (2000) Cryptochromes are required for phytochrome signaling to the circadian clock but not for rhythmicity. *The Plant cell* 12 (12):2499-2510
- Devlin PF, Patel SR, Whitelam GC (1998) Phytochrome E influences internode elongation and flowering time in Arabidopsis. *Plant Cell* 10:1479-1487
- Edwards KD, Akman OE, Knox K, Lumsden PJ, Thomson AW, Brown PE, Pokhilko A, Kozma-Bognar L, Nagy F, Rand DA, Millar AJ (2010) Quantitative analysis of regulatory flexibility under changing environmental conditions. *Mol Syst Biol* 6:424. doi:10.1038/msb.2010.81
- Edwards KD, Lynn JR, Gyula P, Nagy F, Millar AJ (2005) Natural allelic variation in the temperature-compensation mechanisms of the Arabidopsis thaliana circadian clock. *Genetics* 170 (1):387-400. doi:10.1534/genetics.104.035238
- Fankhauser C, Staiger D (2002) Photoreceptors in Arabidopsis thaliana: light perception, signal transduction and entrainment of the endogenous clock. *Planta* 216 (1):1-16.
- Feher B, Kozma-Bognar L, Kevei E, Hajdu A, Binkert M, Davis SJ, Schafer E, Ulm R, Nagy F (2011) Functional interaction of the circadian clock and UV RESISTANCE LOCUS 8-controlled UV-B signaling pathways in Arabidopsis thaliana. *Plant J* 67 (1):37-48. doi:10.1111/j.1365-313X.2011.04573.x
- Flis A, Fernandez AP, Zielinski T, Mengin V, Sulpice R, Stratford K, Hume A, Pokhilko A, Southern MM, Seaton DD, McWatters HG, Stitt M, Halliday KJ, Millar AJ (2015) Defining the robust behaviour of the plant clock gene circuit with absolute RNA timeseries and open infrastructure. *Open Biol* 5 (10). doi:10.1098/rsob.150042

- Franklin KA, Davis SJ, Stoddart WM, Vierstra RD, Whitelam GC (2003) Mutant analyses define multiple roles for phytochrome C in Arabidopsis photomorphogenesis. *Plant Cell* 15 (9):1981-1989
- Gould PD, Locke JC, Larue C, Southern MM, Davis SJ, Hanano S, Moyle R, Milich R, Putterill J, Millar AJ, Hall A (2006) The molecular basis of temperature compensation in the Arabidopsis circadian clock. *Plant Cell* 18 (5):1177-1187. doi:10.1105/tpc.105.039990
- Gould PD, Ugarte N, Domijan M, Costa M, Foreman J, Macgregor D, Rose K, Griffiths J, Millar AJ, Finkenstadt B, Penfield S, Rand DA, Halliday KJ, Hall AJ (2013) Network balance via CRY signalling controls the Arabidopsis circadian clock over ambient temperatures. *Mol Syst Biol* 9:650. doi:10.1038/msb.2013.7
- Hsu PY, Harmer SL (2014) Wheels within wheels: the plant circadian system. *Trends Plant Sci* 19 (4):240-249. doi:10.1016/j.tplants.2013.11.007
- Hu W, Franklin KA, Sharrock RA, Jones MA, Harmer SL, Lagarias JC (2013) Unanticipated regulatory roles for Arabidopsis phytochromes revealed by null mutant analysis. *Proc Natl Acad Sci U S A* 110 (4):1542-1547. doi:10.1073/pnas.1221738110
- James AB, Syed NH, Bordage S, Marshall J, Nimmo GA, Jenkins GI, Herzyk P, Brown JW, Nimmo HG (2012) Alternative splicing mediates responses of the Arabidopsis circadian clock to temperature changes. *Plant Cell* 24 (3):961-981. doi:10.1105/tpc.111.093948
- Johnson CH, Elliott JA, Foster R (2003) Entrainment of circadian programs. *Chronobiol Int* 20 (5):741-774
- Jones MA, Hu W, Litthauer S, Lagarias JC, Harmer SL (2015) A Constitutively Active Allele of Phytochrome B Maintains Circadian Robustness in the Absence of Light. *Plant Physiol* 169 (1):814-825. doi:10.1104/pp.15.00782
- Koornneef M, Rolff E, Spruit CJP (1980) Genetic control of light-inhibited hypocotyl elongation in *Arabidopsis thaliana*(L.) Heynh. *ZPflanzenphysiol* 100:147-160
- Mehra A, Shi M, Baker CL, Colot HV, Loros JJ, Dunlap JC (2009) A role for casein kinase 2 in the mechanism underlying circadian temperature compensation. *Cell* 137 (4):749-760
- Mendez-Vigo B, Pico FX, Ramiro M, Martinez-Zapater JM, Alonso-Blanco C (2011) Altitudinal and climatic adaptation is mediated by flowering traits and FRI, FLC, and PHYC genes in Arabidopsis. *Plant Physiol* 157 (4):1942-1955. doi:10.1104/pp.111.183426
- Michael TP, McClung CR (2003) Enhancer trapping reveals widespread circadian clock transcriptional control in Arabidopsis. *Plant Physiol* 132 (2):629-639
- Michael TP, Mockler TC, Breton G, McEntee C, Byer A, Trout JD, Hazen SP, Shen R, Priest HD, Sullivan CM, Givan SA, Yanovsky M, Hong F, Kay SA, Chory J (2008) Network discovery pipeline elucidates conserved time-of-day-specific cis-regulatory modules. *PLoS Genet* 4 (2):e14
- Michael TP, Salome PA, Yu HJ, Spencer TR, Sharp EL, McPeck MA, Alonso JM, Ecker JR, McClung CR (2003) Enhanced fitness conferred by naturally occurring variation in the circadian clock. *Science* 302 (5647):1049-1053
- Monte E, Alonso JM, Ecker JR, Zhang Y, Li X, Young J, Austin-Phillips S, Quail PH (2003) Isolation and characterization of phyC mutants in Arabidopsis reveals complex crosstalk between phytochrome signaling pathways. *Plant Cell* 15 (9):1962-1980
- Nishida H, Ishihara D, Ishii M, Kaneko T, Kawahigashi H, Akashi Y, Saisho D, Tanaka K, Handa H, Takeda K, Kato K (2013) Phytochrome C is a key factor controlling long-day flowering in barley. *Plant Physiol* 163 (2):804-814. doi:10.1104/pp.113.222570
- Pankin A, Campoli C, Dong X, Kilian B, Sharma R, Himmelbach A, Saini R, Davis SJ, Stein N, Schneeberger K, von Korff M (2014) Mapping-by-Sequencing Identifies HvPHYTOCHROME C as a Candidate Gene for the early maturity 5 Locus Modulating the Circadian Clock and Photoperiodic Flowering in Barley. *Genetics* 198 (1):383-396. doi:10.1534/genetics.114.165613
- Patterson HD, Thompson R (1971) Recovery of inter-block information when block sizes are unequal. *Biometrika* 58:545-554
- Payne RW, Lane P, Digby P, Harding S, Leech P, Morgan G, Todd A, Thompson R, Tunnicliffe W, Welham S, White R (1993) *Genstat 5 Release 3 Reference Manual*. Oxford University Press, Oxford
- Reed JW, Nagpal P, Poole DS, Furuya M, Chory J (1993) Mutations in the gene for the red/far-red light receptor phytochrome B alter cell elongation and physiological responses throughout arabidopsis development. *Plant Cell* 5:147-157
- Salome PA, Weigel D, McClung CR (2010) The role of the Arabidopsis morning loop components CCA1, LHY, PRR7, and PRR9 in temperature compensation. *Plant Cell* 22 (11):3650-3661. doi:10.1105/tpc.110.079087
- Seaton DD, Smith RW, Song YH, MacGregor DR, Stewart K, Steel G, Foreman J, Penfield S, Imaizumi T, Millar AJ, Halliday KJ (2015) Linked circadian outputs control elongation growth and flowering in response to photoperiod and temperature. *Mol Syst Biol* 11 (1):776. doi:10.15252/msb.20145766
- Somers DE, Devlin PF, Kay SA (1998) Phytochromes and cryptochromes in the entrainment of the Arabidopsis circadian clock. *Science* 282 (5393):1488-1490
- Sorensen A, Guerineau F, Canales-Holzeis C, Dickinson HG, Scott RJ (2002) A novel extinction screen in Arabidopsis thaliana identifies mutant plants defective in early microsporangial development. *Plant J* 29 (5):581-594
- Swarup K, Alonso-Blanco C, Lynn JR, Michaels SD, Amasino RM, Koornneef M, Millar AJ (1999) Natural allelic variation identifies new genes in the Arabidopsis circadian system. *Plant J* 20 (1):67-77. doi:10.1046/j.1365-313X.1999.00577.x
- Weigel D, Mott R (2009) The 1001 genomes project for Arabidopsis thaliana. *Genome Biol* 10 (5):107. doi:10.1186/gb-2009-10-5-107
- Whitelam GC, Johnson E, Peng J, Carol P, Anderson ML, Cowl JS, Harber NP (1993) Phytochrome A null mutants of arabidopsis display a wild-type phenotype in white light. *Plant Cell* 5:757-768
- Yanovsky MJ, Mazzella MA, Casal JJ (2000) A quadruple photoreceptor mutant still keeps track of time. *Curr Biol* 10 (16):1013-1015