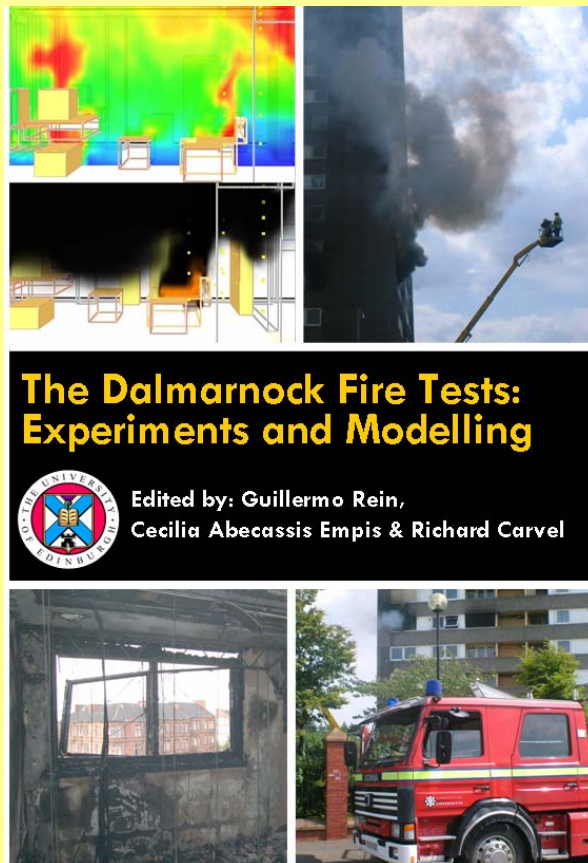


This PDF file is an extract from:

The Dalmarnock Fire Tests: Experiments and Modelling
Edited by G. Rein, C. Abecassis Empis and R. Carvel



**Published by the School of Engineering and Electronics,
University of Edinburgh, 2007.
ISBN 978-0-9557497-0-4**

**The contents of the book and much of the other published output from
the BRE Centre for Fire Safety Engineering can be downloaded for free
from the Edinburgh Research Archive:**

<http://www.era.lib.ed.ac.uk/handle/1842/1152>

Produced as part of the FIRESEAT symposium series:

<http://www.fireseat.org/>

9. The Performance of Fibre Reinforced Polymer Strengthening in the Fire

By Tim Stratford, Martin Gillie and Jian-fei Chen

Introduction

Buildings are refurbished many times during their lives, often requiring structural alterations to the building form, or strengthening works. Building owners naturally look for the most economical refurbishment scheme, and this cost is dominated by the disruption to the building's normal use.

Bonded fibre-reinforced-polymer (FRP) strengthening is an increasingly popular refurbishment method. This involves gluing an advanced fibre composite on to the existing structure to increase its sectional capacity. Although commonly described as 'strengthening', it has a variety of other uses, such as to reduce deflections. Where holes need to be cut in a concrete slab (for example, to insert services, a lift shaft, or a light well), FRP can be bonded around the perimeter of the hole before it is cut, so as to carry the increased stress resultants. The lightweight and non-corrosive properties of the FRP are advantageous, but it is the consequential savings in installation time and equipment that have helped FRP strengthening become a mainstream structural refurbishment technique.

One issue that has yet to be fully addressed is the fire performance of bonded FRP strengthening (Porter and Harries, 2007). The opportunity was taken to evaluate the performance of bonded FRP in Dalmarnock Test One.

Bonded FRP Strengthening in Fire

Bonded FRP strengthening involves four materials:

- the fibres that reinforce the FRP component (commonly carbon fibre);
- the matrix polymer that forms the FRP component (usually an epoxy resin);
- the bonding adhesive (usually epoxy); and
- the substrate (in this case, concrete).

The most critical of these materials in fire is the *bonding adhesive*. A 2-part, ambient-cure, epoxy adhesive is usually used to bond the FRP to the substrate, with a glass transition temperature that is in the range 60°C to 85°C (Kodur *et al.* 2007); i.e. well below the temperatures expected in a compartment fire. Other bonding adhesives have higher glass transition temperatures, but require elevated temperature curing that is difficult on a large structure. For convenience, the FRP component can be preformed off-site and can consequently be autoclaved. This gives the matrix polymer a higher glass transition temperature, but the on-site bonding operation requires an ambient cure adhesive. Where the FRP is formed in-situ, however, the matrix polymer and bonding adhesive are the same.

Current practice recognises that the low glass transition temperature of the bonding adhesive is a concern. For example, UK design guidance states that “*Unless a rigorous analysis is undertaken it is sensible to neglect the strengthening from FRP in fire situations.*” (Concrete Society, 2004). Neglecting the FRP strengthening may be acceptable if the FRP is not needed for the structure to carry the loads that are present during a fire scenario (which are lower than the ultimate load for which the strengthening is designed). However, where FRP strengthening is designed to carry permanent loads, the strengthening might be required during a fire. This may occur, for example, where the dead load is increased by high density filing systems or library shelves, or where FRP is used to carry the perimeter stresses around a new hole cut into a concrete slab to insert services (an increasingly common application). If the strengthening is required during a fire, the bonding adhesive must be insulated using a suitable protection system. Current guidance highlights the lack of knowledge on suitable protection systems: “*Regulations may require the application of an over-coat layer, which has been tested on the fully-cured composite system*” (Concrete Society, 2004). This is impractical for the design engineer who is working to a limited budget and timescale, and may be tempted to use ‘engineering judgement’ to adapt traditional insulation methods such as an intumescent coating and gypsum board insulation.

Recent research has started to address fire protection for bonded FRP. Furnace tests were carried out by Blondtrock *et al.* (2001) using combinations of gypsum board and mineral wool insulation. Barnes and Fidell (2006) report tests that used a proprietary cementitious fire protection, and supplemented the bonding adhesive with bolted fastenings. Proprietary systems have been specifically developed to protect bonded FRP strengthening and these have been tested applied to columns and slabs (Kodur *et al.* 2007).

All previously reported tests have been carried out in a furnace, using a prescribed time-temperature curve that is quite different to reality (discussed in Chapter 8). The bonded FRP fire tests carried out in Dalmarnock were unique, as they involved a ‘real’, flashed-over, fire.

Description of the Test Arrangement

Two types of bonded FRP strengthening were installed in the Dalmarnock test: Plate and Near-Surface-Mounted (NSM), shown schematically in Figure 1. Plate strengthening requires any loose material to be removed from the surface of the concrete to expose a sound substrate, to which the pre-formed plate is bonded. For NSM strengthening, a groove is cut into the concrete; a bar of FRP is bonded into the groove; and the groove is filled flush with adhesive.

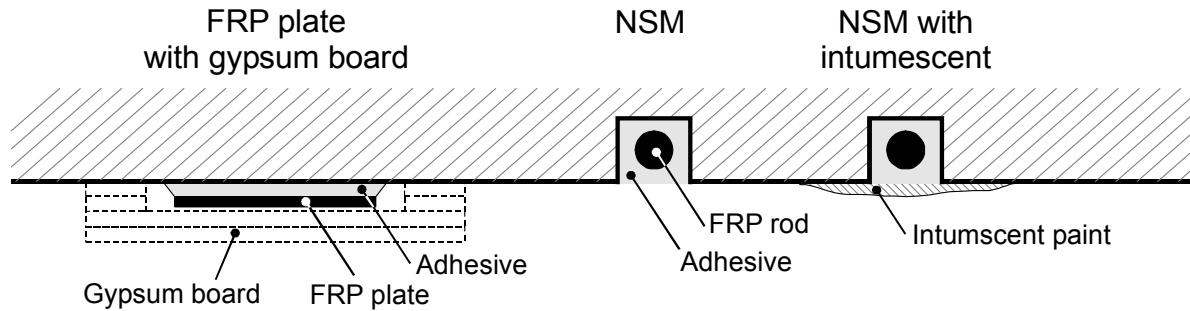


Figure 1: Types of FRP strengthening and protection (schematic)

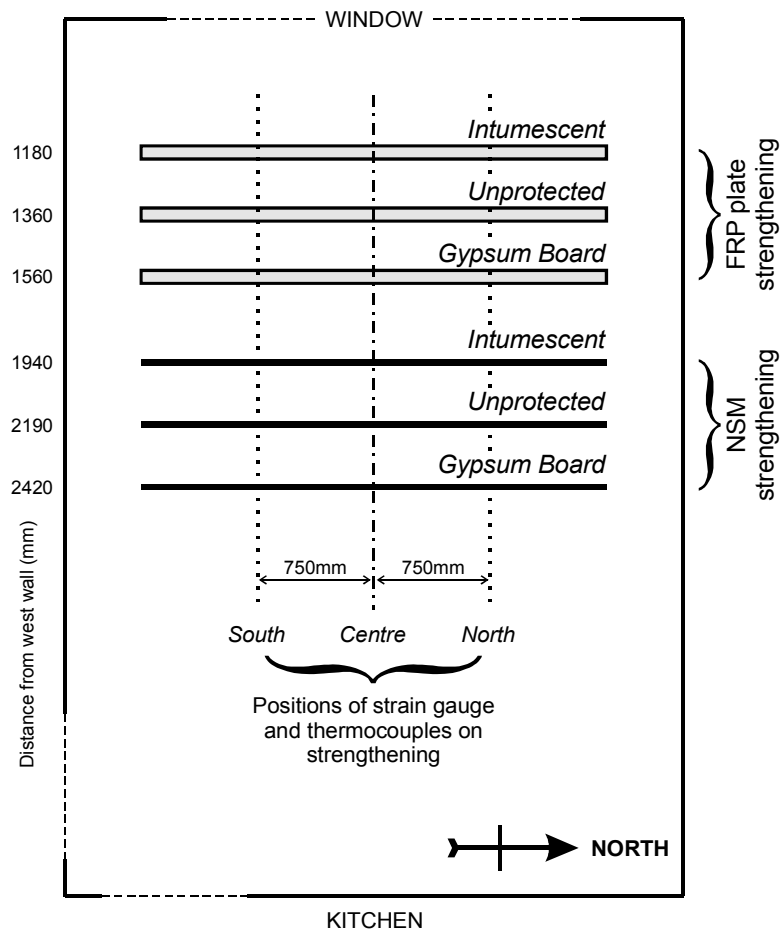
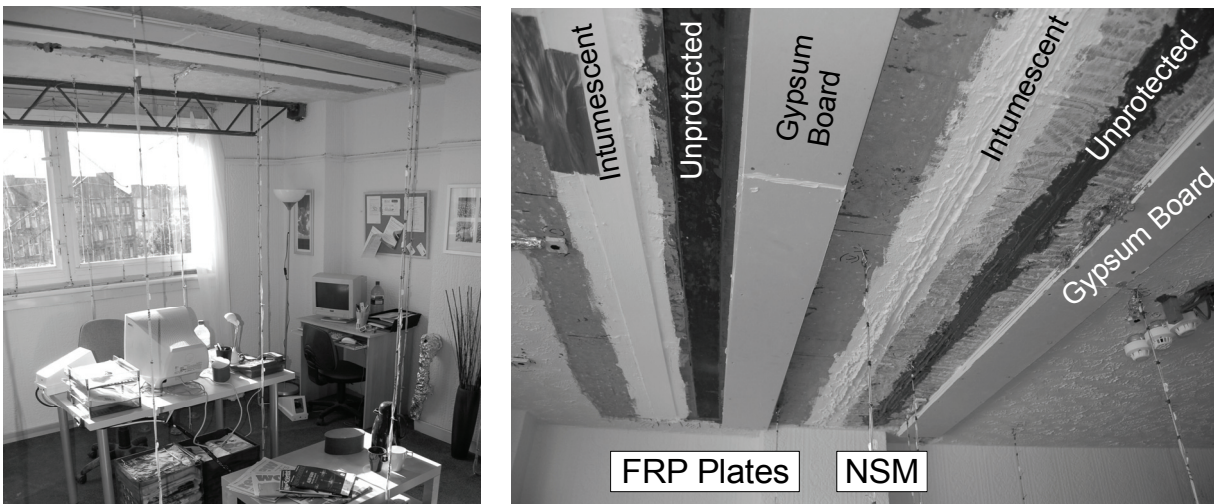


Figure 2: Plan view of the strengthening and instrumentation

Six strips of strengthening were installed in the compartment used for Dalmarnock Test One: three using plates and three NSM (Figures 2 and 3). One of each type of

strengthening was left unprotected, one painted with an intumescent coating, and one was protected within a gypsum board box. The gypsum board protection comprised two layers of 12mm board, spaced away from the bottom of the slab by a further two layers of board, placed to either side of the strengthening (Figure 1). The joints were staggered and the layers were sealed with an intumescent sealant. The strengthening was installed by a contractor skilled in the application of bonded FRP (Figure 4), and was completed 20 days before the fire test. The fire protection systems were installed by the University of Edinburgh.



(a) Position within compartment

(b) The six strips of strengthening

Figure 3: The installed FRP strengthening and protection



Figure 4: Installing a strengthening plate

Before installation, the FRP components were instrumented with strain gauges (attached to the upper surface of the FRP at the North, Centre and South positions shown in Figure 2), and thermocouples (placed within the adhesive layer at the same positions). The wires were led up through the concrete slab, with any holes filled with intumescent foam. Further instrumentation was used to monitor the structural response of the slab (Chapter 8), and to record the progress of the fire (Chapter 2).

Table 1 gives the pertinent properties of materials used in the Dalmarnock tests. Note in particular that the glass transition temperature of the bonding adhesive is ‘ $\geq 65^{\circ}\text{C}$ ’. This is the manufacturer’s quoted value, and is rather unsatisfactory. The authors intend carrying out further tests on the adhesive to determine the actual glass transition temperature.

Bonding adhesive	<i>Two component epoxy based adhesive</i>	
	Mechanical properties:	$E = 10 \text{ GPa}$; Lap shear strength = 17 MPa
	Cure time:	Fully cured in 7 days
	Glass transition temperature:	$\geq 65^{\circ}\text{C}$
FRP plate	<i>Pultruded MM (medium modulus) CFRP plate with epoxy matrix</i>	
	Dimensions:	100 x 1.4mm
	Mechanical properties:	Tensile modulus = 170 GPa; Tensile strength = 3100 MPa
	Coefficient of linear thermal expansion:	$0.6 \times 10^{-6} / ^{\circ}\text{C}$
FRP NSM rod	<i>Pultruded CFRP rod with epoxy matrix</i>	
	Dimensions:	12mm diameter
	Mechanical properties:	Tensile modulus = 165 GPa; Tensile strength = 2500 MPa
	Coefficient of linear thermal expansion:	$0.6 \times 10^{-6} / ^{\circ}\text{C}$
Intumescent paint	<i>Thin film water borne intumescent coating</i>	
	Application:	2 coats by brush, estimated thickness 450 μm
	Activation temperature	120 $^{\circ}\text{C}$, from tests on the same material in Liang <i>et al.</i> (2007).

Table 1: The FRP and protection materials (Manufacturer’s data sheet values)

Intumescent coatings are intended for protecting steel members, not FRP. Their activation temperature is usually higher than the glass transition temperature of the adhesive. However, the authors are aware of intumescent protection being *specified* for a bonded FRP project by design engineers (although this was changed before

implementation). The opportunity was therefore taken to demonstrate the performance of the intumescent protection during the Dalmarnock tests.

The fire load and development is described elsewhere (Chapters 2 and 3).



Figure 5a: Remains of unprotected plate



Figure 5b: Remains of intumescent-protected plate

Results and Observations

The condition of the bonded strengthening after the fire test is shown in Figure 5:

- The unprotected plate (Figure 5a) had completely separated from the concrete. Both the bonding adhesive and the matrix polymer had burnt away, leaving exposed concrete on the ceiling and the fibres exposed on the floor.

- The intumescent protected plate (Figure 5b) separated from the concrete, except for a short length at its southern end, where it remained bonded to the concrete. Away from this end, the matrix polymer had burnt away to expose the fibres. The bonding adhesive was charred, but remained on the ceiling.

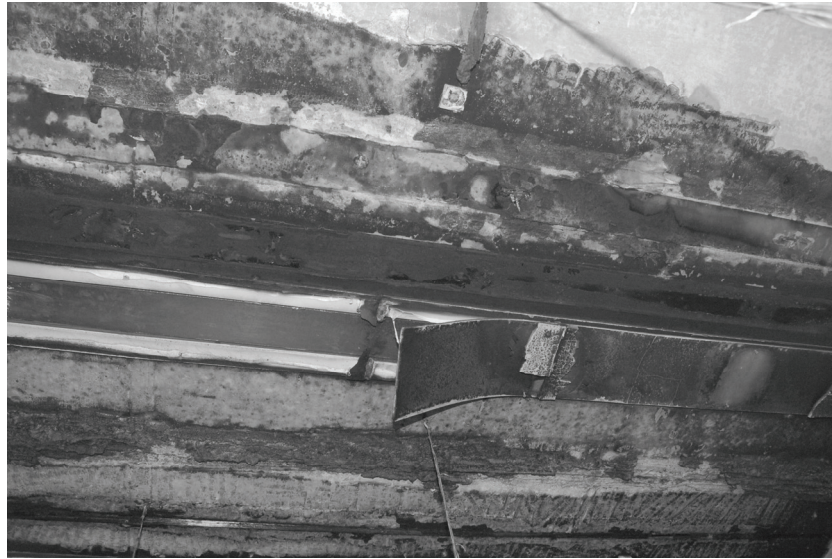


Figure 5c: Gypsum-board-protected plate (protection removed after fire to expose plate)

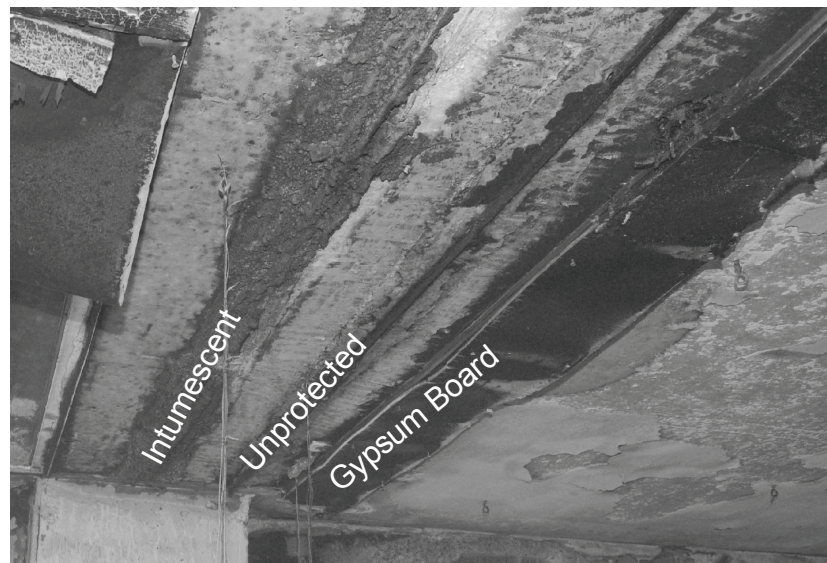


Figure 5d: NSM strengthening after the fire.

- The gypsum-board protection was inspected after the tests, and was fully intact. When the board was removed (Figure 5c), the plate was fully bonded to the concrete, and there was no *visual* damage to either the plate or adhesive.
- The adhesive around the unprotected NSM bar (Figure 5d) had burnt away, leaving the FRP exposed.

- The intumescent coating over NSM strengthening (Figure 5d) had activated. The strengthening beneath the intumescent was in place, although the adhesive was glazed and contained transverse cracks.
- The gypsum-board protected NSM (Figure 5d) remained intact, and the strengthening beneath was visually unaltered.

Figure 6 shows the temperatures recorded by the bondline thermocouples, for each strengthening type and at each position (north, centre and south). There were a few inactive thermocouples (not shown), and the readings for 3 thermocouples (gypsum-centre, intumescent-north and intumescent-centre) are erroneous. It should be noted that some of the readings in Figure 6 would have been taken after a plate had separated from the ceiling. Figure 6 also shows gas phase temperatures from a single thermocouple in the centre of the strengthened region, but it should be noted that the temperatures varied across the compartment, as described in Chapter 3.

In all cases the bondline temperature was well above the glass transition temperature of the adhesive. As expected, the bondline temperatures are highest in the unprotected plates; however, even with gypsum-board protection, the glass transition temperature was reached within a minute after flash-over. This is was much more rapid than previous furnace-based research (eg: Blondtrock *et al.* 2001). Although the protection is not directly comparable, these furnace-based tests suggest that it takes in the order of 20 minutes for a similar temperature rise.

Without further analysis it is not possible to draw comparisons between the plate and NSM temperatures.

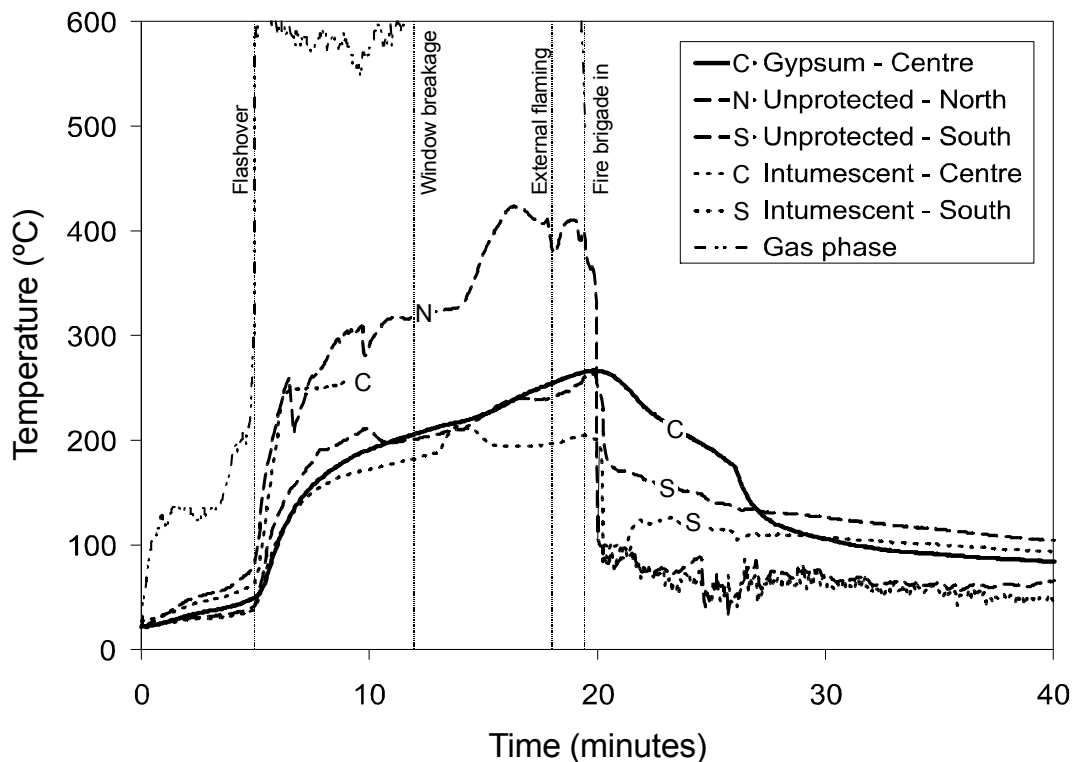


Figure 6a: Bondline temperatures - plates

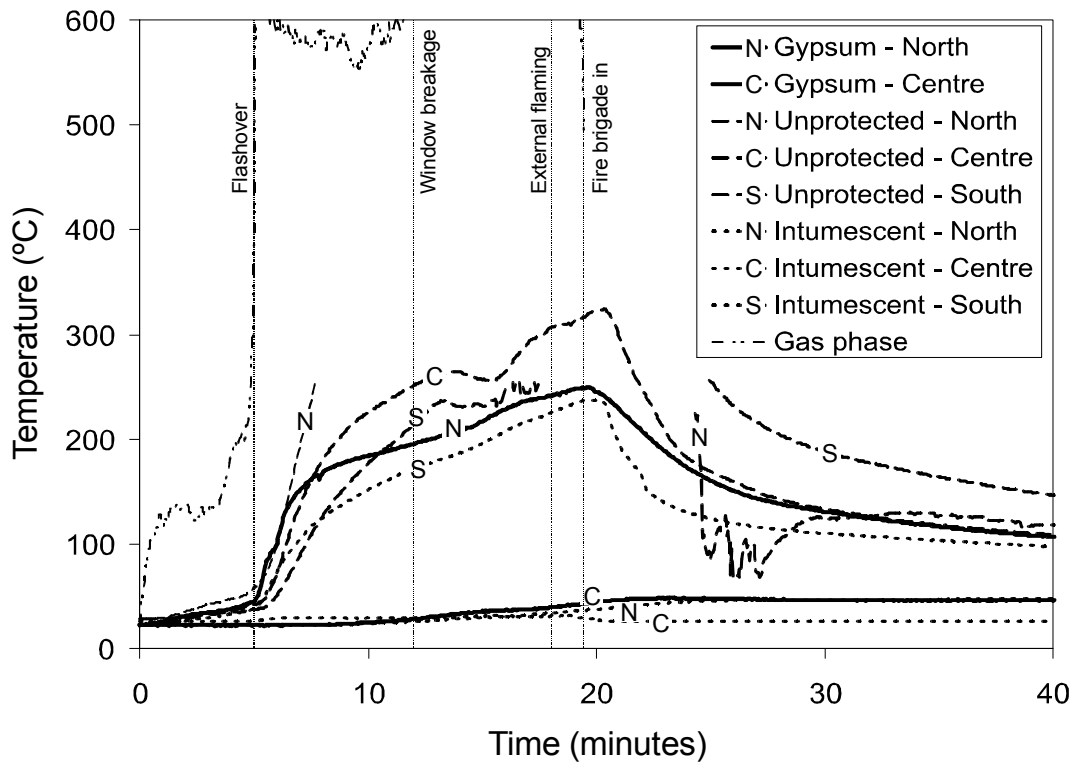


Figure 6b: Bondline temperatures - NSM

Figure 7 shows the strain gauge results, presented here before correction for temperature effects. These strain results are all due to thermal effects: (a) thermal expansion of the FRP component, possibly in composite action with the concrete, (b) differential thermal expansion between the gauge and the FRP, and (c) apparent strains due to electrical effects in the gauge. Future work will use thermocouple readings adjacent to the strain gauges to remove components (b) and (c), but this has not yet been carried out with sufficient rigour to present the results here. It is important to note that the strain gauges and gauge adhesive were only intended for use up to 200°C, consequently the correction will not be accurate and there may have been slip in the gauge adhesive above this temperature. Also, the time resolution of the data is poor, and the negative strains for the intumescent-protected NSM are anomalous.

Nevertheless, the uncorrected strain evolutions in Figure 7 are useful. Separation of the intumescent plate from the concrete, for example, occurred about 10 minutes from the start of the test, but the plate remained in contact at the southern end (confirmed by Figure 5b). The gypsum board protected strengthening have complete strain traces. The negative strains for the north gypsum-protected NSM gauge suggest the FRP has slipped relative to the concrete slab due to adhesive viscosity at high temperatures, but solidified during cooling. Further work, however, is required to analyse these results.

Ongoing Work

The interpretation of test results described herein is limited by the need for further work, which is being carried out in parallel to analysis of the structural data (Chapter 8). This includes correlation of slab strain with the FRP strain, consideration of local variations in gas phase temperature, and determination of the time of separation events. Materials

characterisation will be undertaken, and a thermal analysis of the protected strengthening carried out.

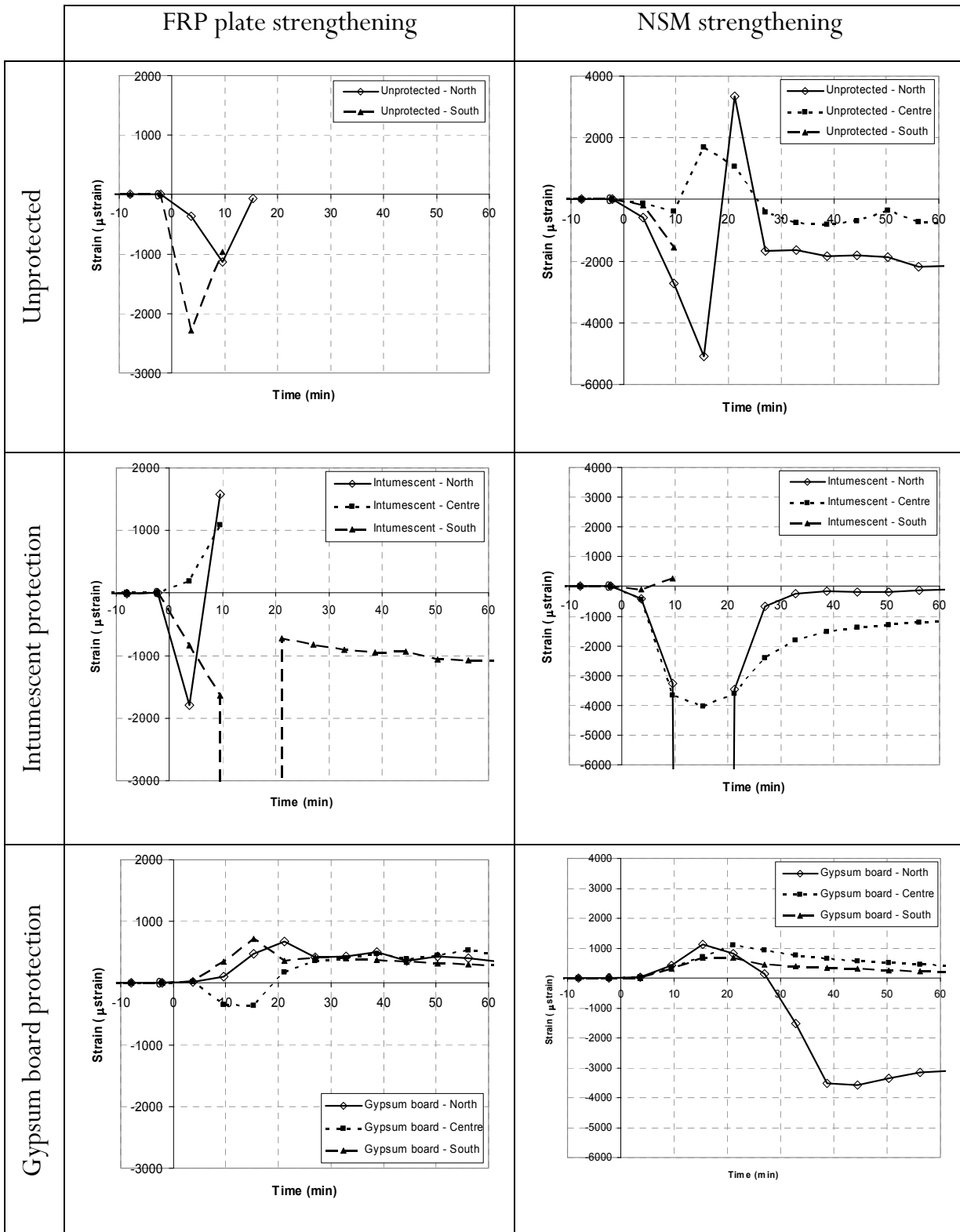


Figure 7: Uncorrected FRP strain measurements

Conclusions

The bonded FRP strengthening installed in Dalmarnock Test One are the first in a ‘real’, flash-over fire. The results and preliminary analysis have demonstrated the vulnerability of the bonding adhesive during a fire; the bondline temperature greatly exceeded the glass transition temperature in all tests (with and without protection). Furthermore, this temperature was reached far more quickly than furnace-based testing has suggested.

NSM strengthening has superior integrity to plate strengthening during a fire. The surrounding concrete would be expected to draw heat away from the adhesive, but further analysis of the test data is required to investigate this.

The intumescent protection was ineffective, due to an activation temperature that exceeded the glass transition temperature of the adhesive. The plate strengthening separated from the concrete, and there was visible damage to the NSM bonding adhesive.

Where the adhesive or matrix polymers were exposed to the fire, they burnt or charred, and would have released toxic fumes. This occurred in the unprotected tests, and due to separation of the intumescent-protected plate from the concrete.

The gypsum board protected the FRP strengthening from visible damage. However, the strengthening would not have been mechanically active during the test, due to the glass transition temperature having been exceeded.

Acknowledgements

The authors gratefully acknowledge the support of BASF Construction and Concrete Repairs Ltd. and the assistance of Jim Hucheson in setting up.

References

- Barnes R., Fidell J., Performance in fire of small-scale CFRP strengthened concrete beams, *ASCE Journal of Composites for Construction*, 10, 6, pp.503-508, 2006
- Blondtrock H., Taerwe L., Vandeveld P., “Fire Testing of Concrete Slabs Strengthened with Fibre Composite Laminates”, *Proceedings of FRPRCS-5*, Thomas Telford, London, 2001
- Concrete Society, Design Guidance for Strengthening Concrete Structures using Fibre Composite Materials, Technical Report 55, 2nd Edition, The Concrete Society, Camberley, UK, ISBN 1-904482-14-7, 2004
- Kodur V.K.R., Bisby L.A., Green M.F., Preliminary guidance for the design of FRP-strengthened concrete members exposed to fire, *Journal of Fire Protection Engineering*, 17, 5, pp. 5-26, 2007
- Liang H., Welch S., Stratford T., Kinsella E.V., “Development and validation of a generalised engineering methodology for thermal analysis of structural members in fire”, *Proceedings of Fire and Explosion Hazards 5*, 23-27 April 2007
- Porter M.L., Harries K., Future Directions for Research in FRP Composites in Concrete Construction, *ASCE Journal of Composites for Construction*, 11, 3, p 252-257, 2007

The opinions expressed in this volume are those of the named authors of each of the chapters and may not represent the opinions of the editors, the School of Engineering and Electronics or the University of Edinburgh.

When citing chapters from this volume, the following reference style should be used:

Authors, Chapter no., Title, *The Dalmarnock Fire Tests: Experiments and Modelling*, Edited by G. Rein, C. Abecassis Empis and R. Carvel, Published by the School of Engineering and Electronics, University of Edinburgh, 2007. ISBN 978-0-9557497-0-4

The contents of this book and much of the other published output from the BRE Centre for Fire Safety Engineering can be downloaded from the Edinburgh Research Archive:

<http://www.era.lib.ed.ac.uk/handle/1842/1152>

Produced as part of the FIRESEAT symposium series:

<http://www.see.ed.ac.uk/FIRESEAT/>

Published by the

SCHOOL of ENGINEERING and ELECTRONICS

UNIVERSITY of EDINBURGH

KING'S BUILDINGS, MAYFIELD ROAD

EDINBURGH, EH9 3JL, UNITED KINGDOM

Tel: +44 (0) 131 650 1000

Fax: +44 (0) 131 650 6554

fire.research@ed.ac.uk

<http://www.see.ed.ac.uk/fire/>

November 2007

Copyright © the School of Engineering and Electronics, University of Edinburgh