



Food and Agriculture Organization
of the United Nations



The future of livestock in Africa

CONNECTING THE DOTS

Ugo Pica-Ciamarra (ASL2050)

LD4D meeting, Rome, 4-6 February 2020



USAID
FROM THE AMERICAN PEOPLE

*Financial support provided by the
United States Agency for
International Development (USAID)*

**ASL
2050**

AFRICA SUSTAINABLE LIVESTOCK 2050

Policy project to:

explore the future (2050) to
anticipate emerging livestock-
related opportunities and
challenges

... and provide evidence
for improved policies and
investments





AFRICA SUSTAINABLE LIVESTOCK 2050

Policy project to:

explore the future (2050) to
anticipate emerging livestock-
related opportunities and
challenges

... and provide evidence
for improved policies and
investments

Characterization of existing livestock
production systems and assessment of
their impacts on society (livelihoods,
environment and public health)

Quantitative projections and foresight
methodologies to portray the future of
livestock in 2050

Recommendations for resilient policies

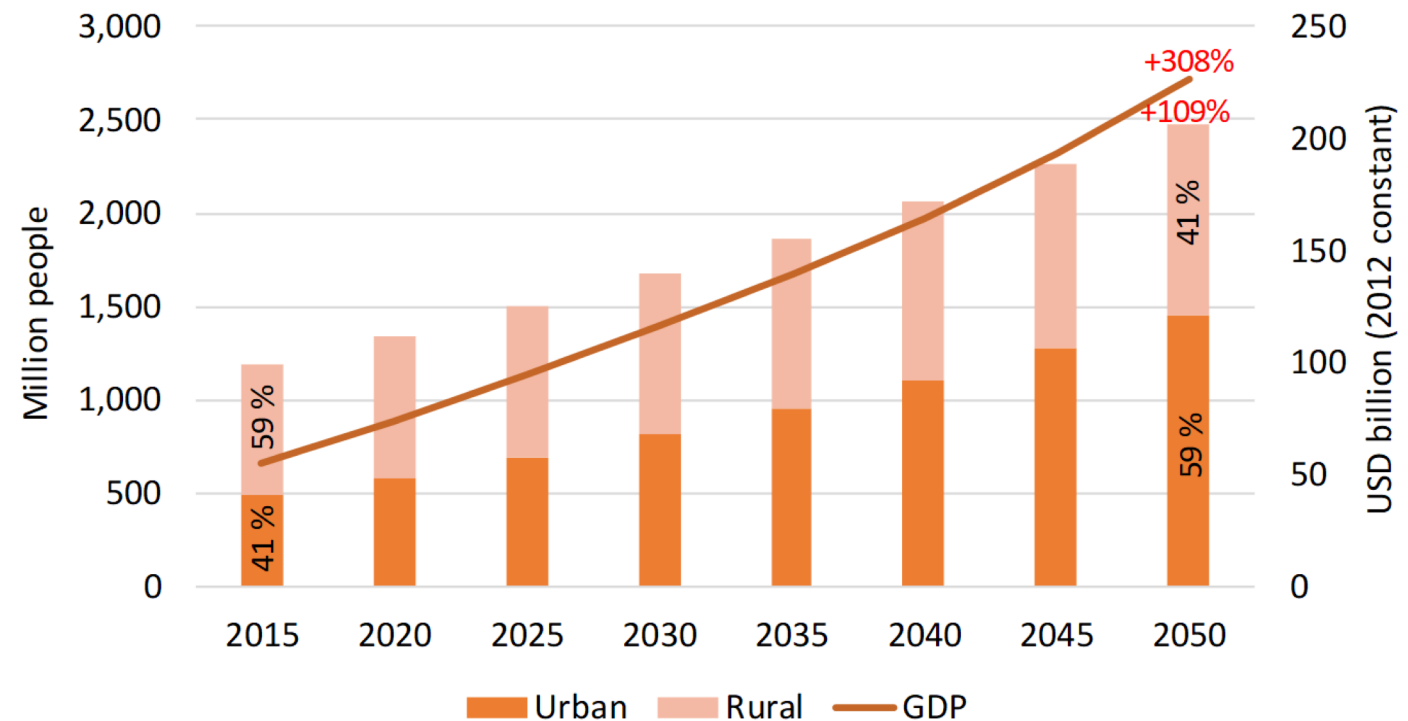
MEGATRENDS

Increasing population

Urbanization

Consumer purchasing power

Population & income in Africa 2015 to 2050

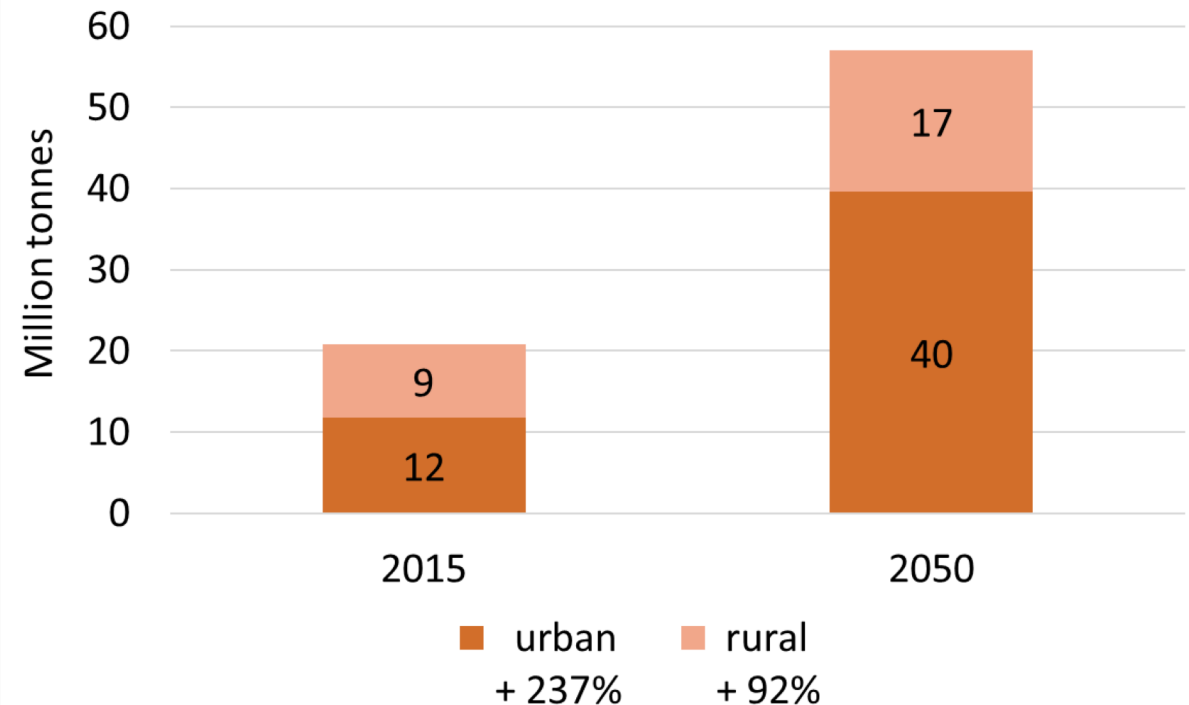


MEGATRENDS

Increased consumption of
animal source foods

Urban areas will contribute
about 70 % to all consumption
of livestock products

Meat consumption, 2015 to 2050 Africa urban and rural areas

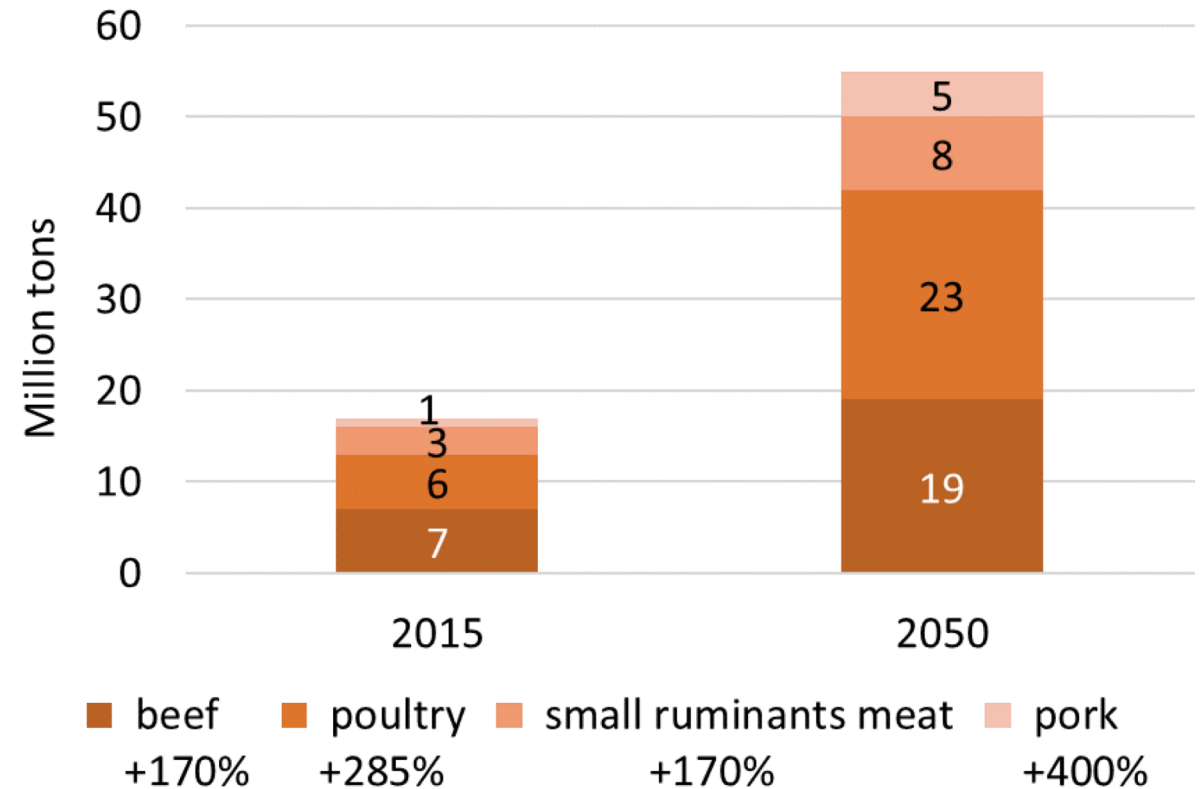


MEGATRENDS

Producers will respond to the increased demand

Production anticipated to grow almost as much as consumption

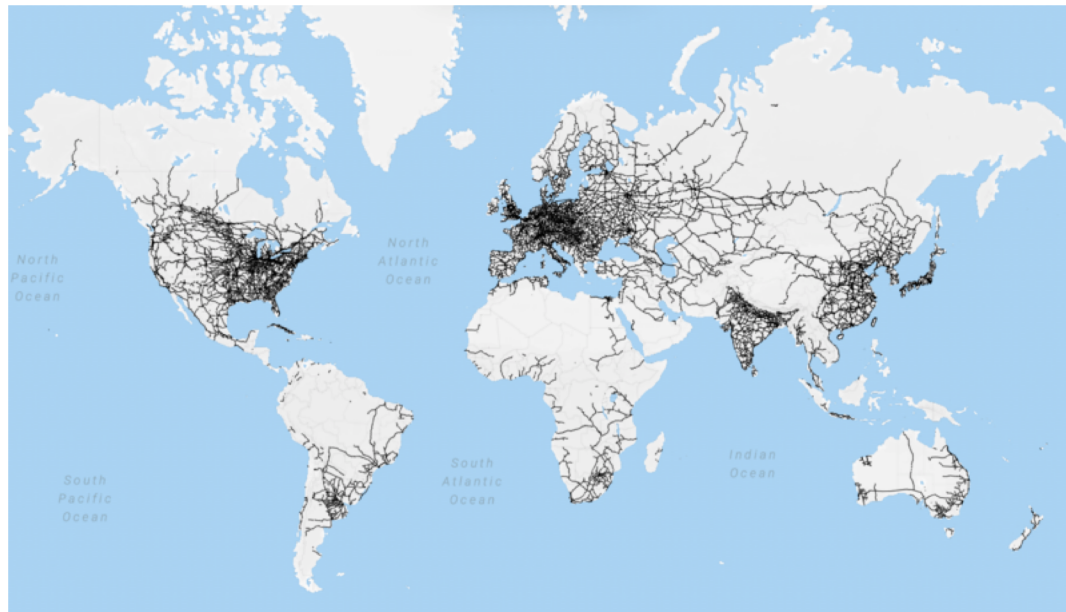
Meat production, 2015 to 2050



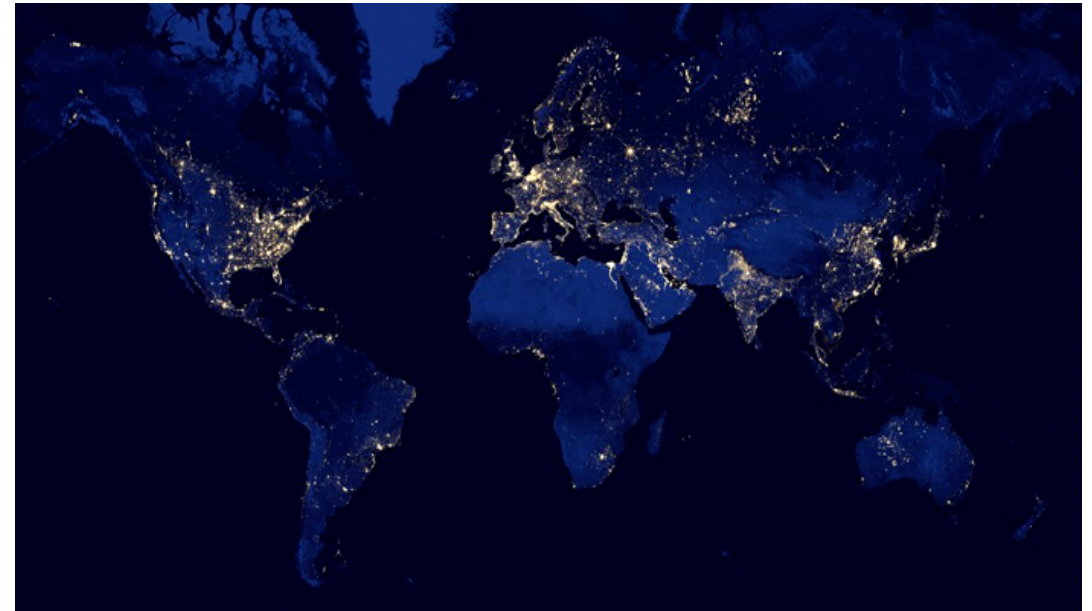


INFRASTRUCTURE: AFRICA AND THE WORLD

Railway network



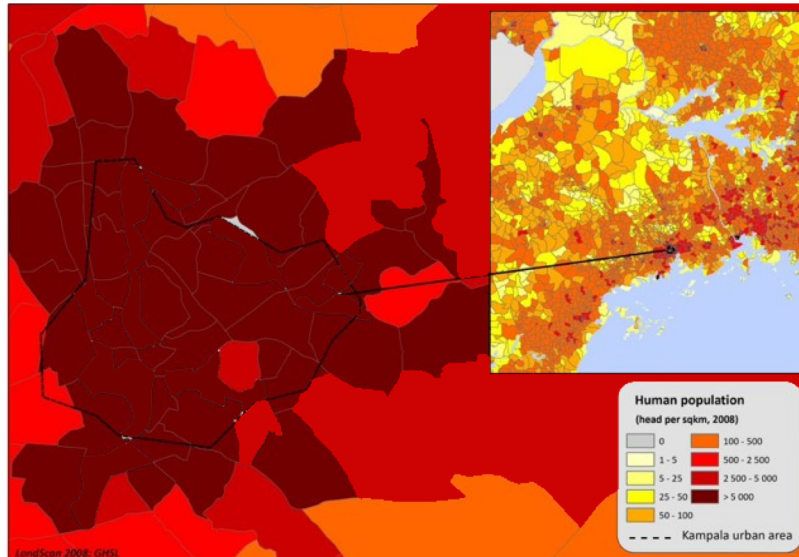
Night light



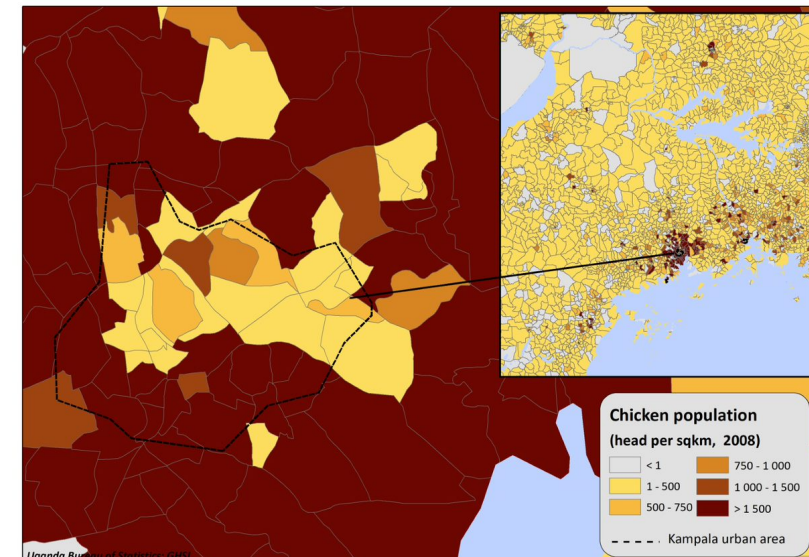
MEGATRENDS – CHANGING GEOGRAPHY OF LIVESTOCK PRODUCTION

Kampala, Uganda: human and animal population density (observed data)

Human population (person/sqkm)



Chicken population (head/sqkm)

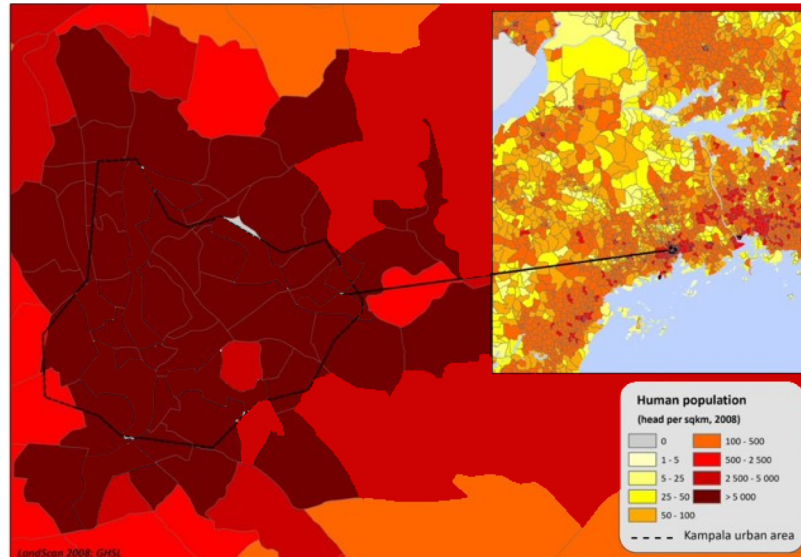


Increased relevance of
urban and peri-urban
livestock farms / value
chains

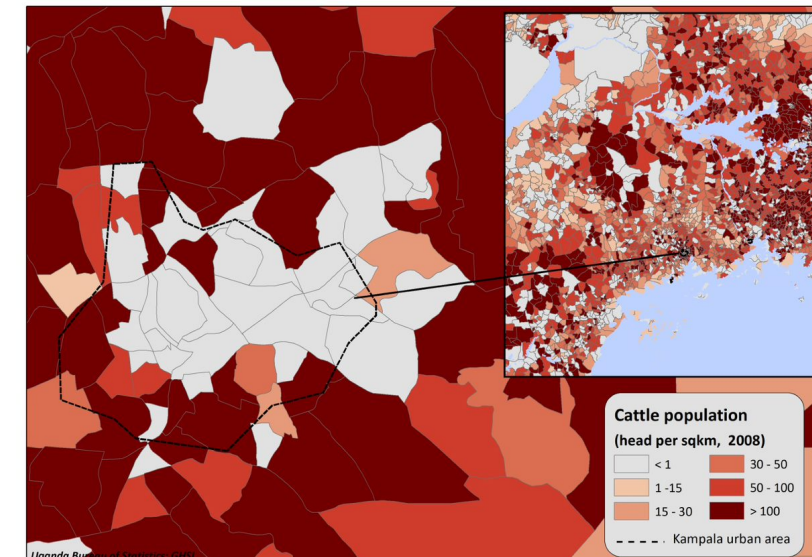
MEGATRENDS – CHANGING GEOGRAPHY OF LIVESTOCK PRODUCTION

Kampala, Uganda: human and animal population density (observed data)

Human population (person/sqkm)



Cattle population (head/sqkm)



Increased relevance of
urban and peri-urban
livestock farms / value
chains

MEGATRENDS - HIGHER HUMAN AND LIVESTOCK POPULATION DENSITY IN URBAN AREAS

environmental issues

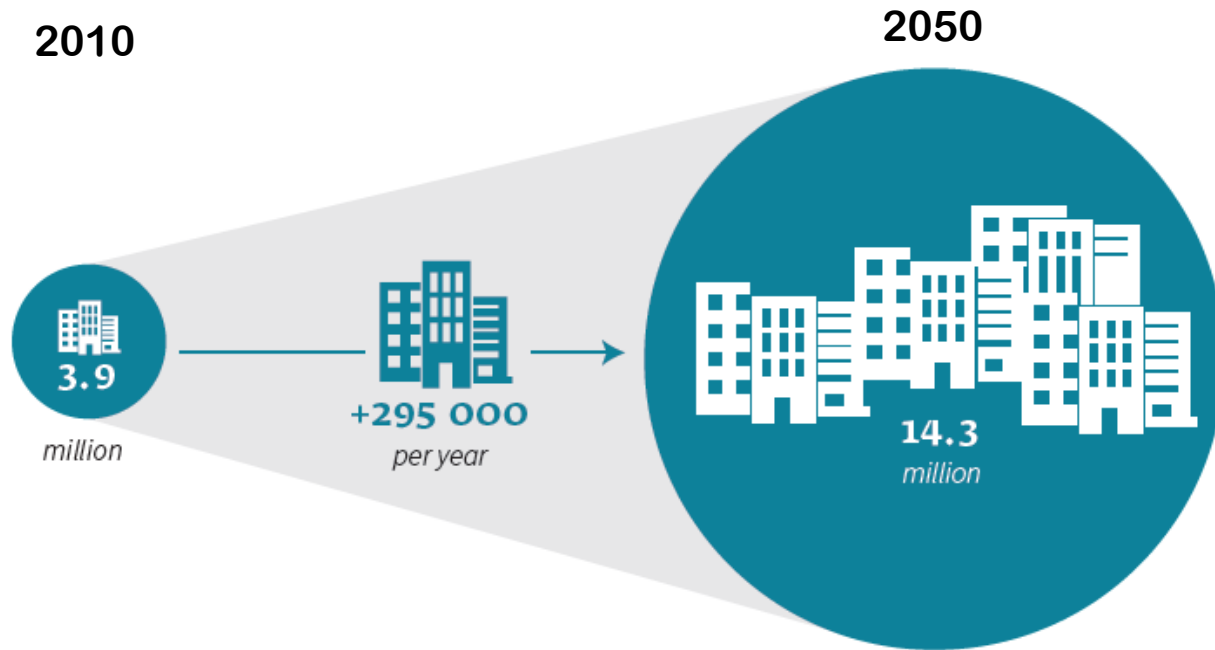


public health issues



LIVESTOCK-RELATED ENVIRONMENTAL AND PUBLIC HEALTH ISSUES FASTER THAN YOU THINK

Nairobi projected human population



Nairobi population, 2010 – 2050

THE CHALLENGE	
Per year	+ 295 000
Per month	+ 24 000
Per week	+ 6 000
Per day	+ 900

Source: Hoorweg and Pope, 2016

THE CHALLENGE

Policies and strategies...

Research

... are path-dependent and focus on the «past» or the current situation (e.g. smallholders in rural areas and pastoralists), while Africa is changing past ...

... a perfect recipe for failure ?

Dar es Salaam

1986



Pop = 1.2 million

2016



Pop = 5.4 million

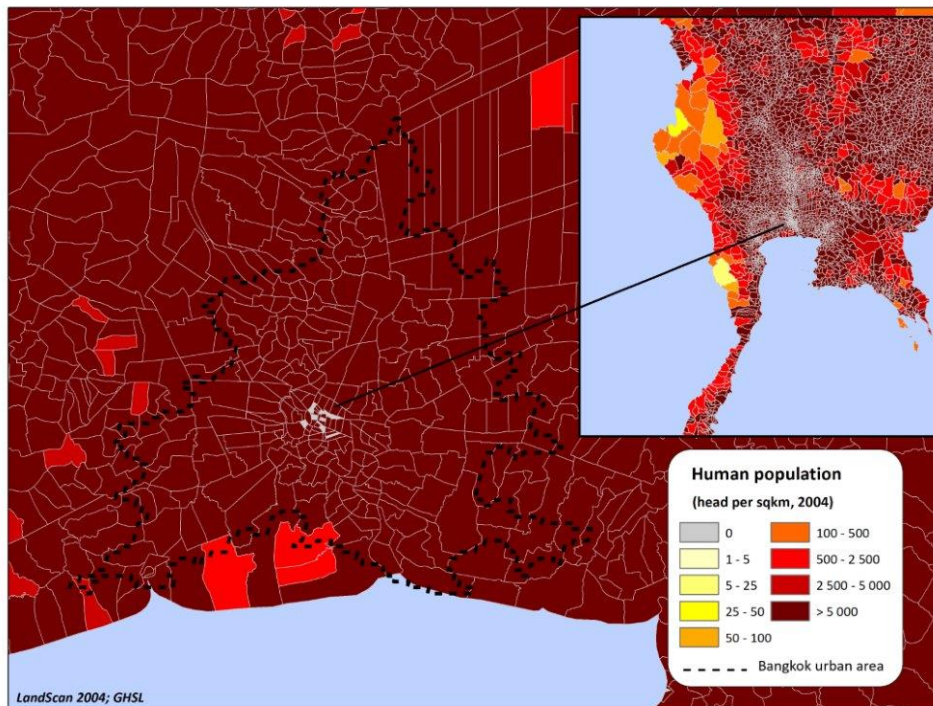
Thank you



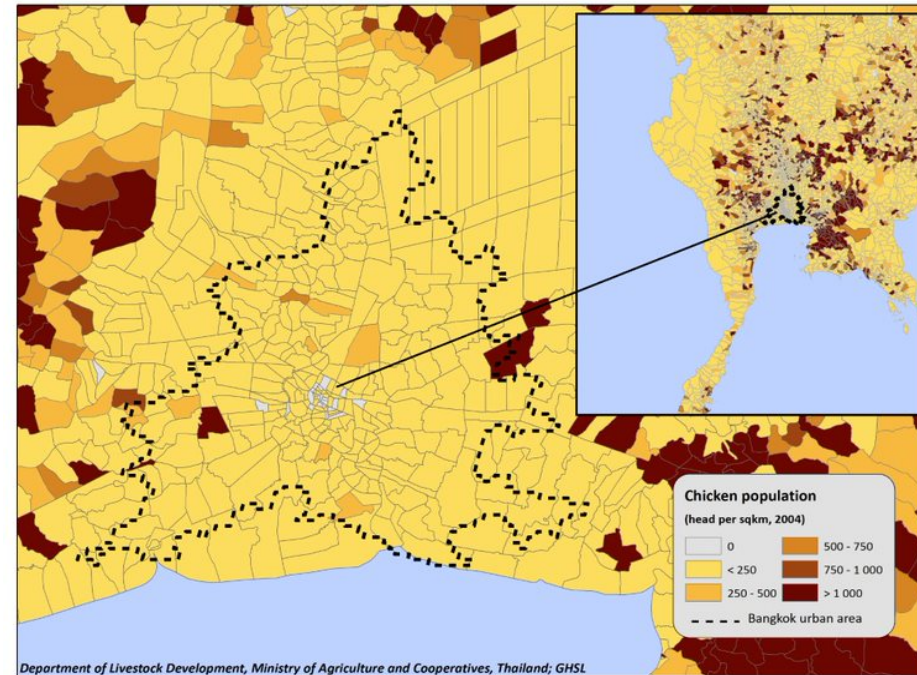
Protecting people, animals, and the environment every day

Bangkok, Thailand: human and animal population density (observed data)

Human population (person/sqkm)

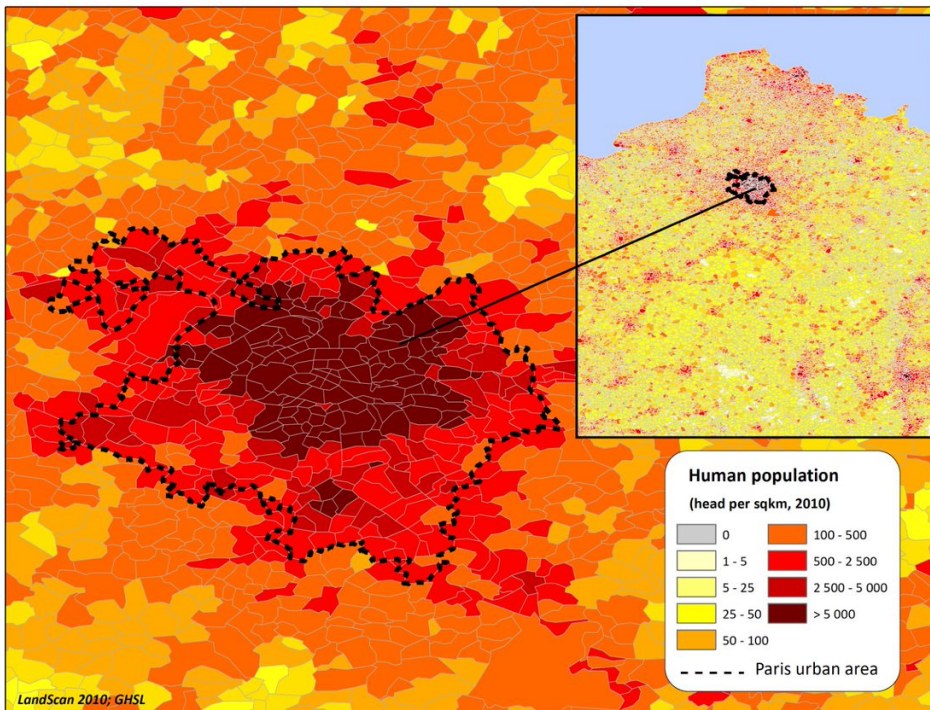


Chicken population (head/sqkm)

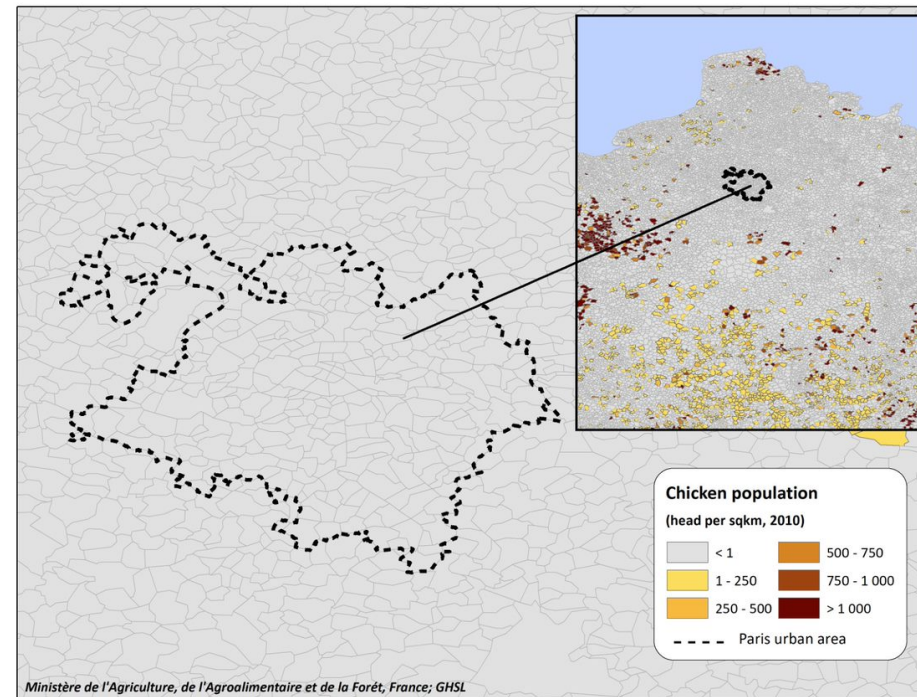


Paris, France: human and animal population density (observed data)

Human population (person/sqkm)

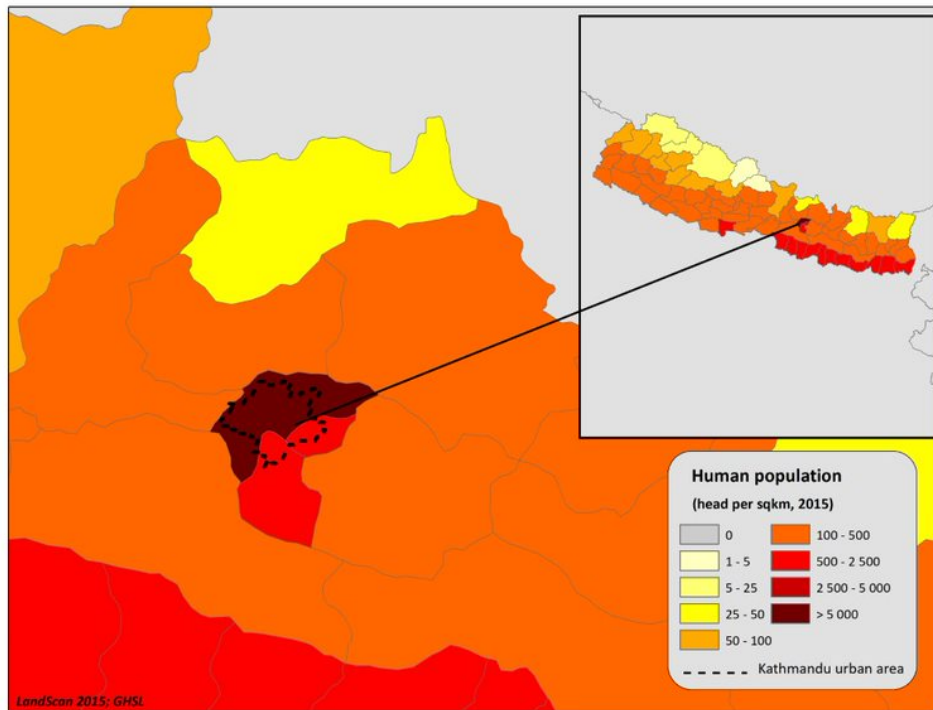


Chicken population (head/sqkm)



Kathmandu, Nepal: human and animal population density (observed data)

Human population (person/sqkm)



Chicken population (head/sqkm)

