

THE MINARET  
AND  
ITS RELATIONSHIP TO THE MOSQUE IN  
EARLY ISLAM

by

Ghāzī Rajab Moḥammad

II

Illustrations

Thesis Presented to the University of Edinburgh  
for the Degree of Doctor of Philosophy

1964



Table of Illustrations

Fig.		
1.	Medina: The Prophet's Mosque (622-646/7 A.D.) plan (by Creswell - modified)	1
2.	Fustāt: 'Amr's Mosque (642 A.D.), plan (by Corbet)	2
3.	Syria: A map showing the sites of the pre-Islamic towers (by Butler)	3
4.	Syria: A map showing the sites of the pre-Islamic towers (by Butler)	4
5.	Petra: Tomb-facades	5
6.	Petra: A ṣihriġ	5
7.	Palmyra: Tomb-towers	6
8.	Palmyra: Tomb-tower of Jamlīshū, (83 A.D.)	6
9.	Rīmat al-Luhf: Tomb-tower (2nd - 3rd cent. A.D.)	7
10.	Shaykh 'Alī Qāsūn: Doorway of tower	8
11.	Halbān: Doorway of tower	8
12.	Al-Tūba: Doorway of tower	9
13.	Qayrawān: Doorway of minaret (836 A.D.)	9
14.	Kfellūsīn: Watch-tower (492 A.D.)	10
15.	Shaykh 'Alī Qāsūn: Watch-tower (6th cent. A.D.)	10
16.	Halbān: Tower (542 A.D.)	11
17.	Umm al-Jimāl: Tower (c. 412 A.D.)	11
18.	Jerāda: Tower	12
19.	Ṣabḥa: Tower	12
20.	Al-Sanamayn: Tower	13
21.	Burāq: House-towers	13
22.	Serjiblah: Five-storey house (6th cent. A.D.)	14
23.	Samah: Top storey of church-tower	14
24.	Umm al-Qiṭṭayn: Top storey of church-tower	15
25.	Umm al-Ṣurāb: " " " " "	15

26.	Qaşr al-Banāt: Church-tower (390-418 A.D.)	16
27.	Umm al-Şurāb: " " (489 A.D.)	16
28.	Jerāda: " " (5th cent. A.D.)	17
29.	Samah: " " (624/25 A.D.)	17
30.	Umm al-Raşās: " "	18
31.	Umm al-Qittayn: " "	18
32.	Dāmit al-ʿAlyā: Stepped-tower	19
33.	Dānā: Tomb	19
34.	Bosra: plan (from Provincia Arabia)	20
35.	Bosra: Mosque of ʿUmar, minaret	21
36.	Bosra: Mosque of al-Khidr, minaret	21
37.	Bosra: Dayr al-Muslim, minaret	22
38.	Al-Umtāʿīyah: Temple-mosque	22
39.	Pasargadae: Tower (549-529B.C.)	23
40.	Naqsh-i Rostam: Tower (522-485 B.C.)	23
41.	Nourābād: Tower (c. III-I cent B.C.)	24
42.	Firūzābād: Tower of Gūr - before reconstruction	25
43.	Firūzābād: Tower of Gūr (reconstruction by Dieulafoy)	25
44.	Pāikūlī: Commemorative monument of Narsī (293-301 A.D.) (reconstruction by Reuther)	26
45.	Fustāt: ʿAmr's Mosque (672/3), plan (by Corbet)	27
46.	Fustāt: ʿAmr's Mosque, minaret (672/3) (reconstruction)	28
47.	Jerusalem: Al-Haram al-Sharīf (c. 1890), plan (by Le Strange - simplified)	29
48.	Damascus: Temple of Jupiter, plan (by Sauvaget)	30
49.	Damascus: Great Mosque, plan (by Marcais)	31
50.	Damascus: Great Mosque, south-eastern corner	32

Fig.		
51.	Damascus: Great Mosque, south-western corner	33
52.	Damascus: Great Mosque, minaret of al-ʿArūs (705/6 A.D.) (reconstruction)	34
53.	Damascus: Great Mosque, minaret of al-ʿArūs (present one)	34
54.	Medina: Prophet's Mosque, minaret (706-7 A.D.) (reconstruction)	35
55.	Mecca: Sacred Mosque, plan (by Hughes)	36
56.	Mecca: Sacred Mosque, minarets (1183 A.D.) (reconstruction)	37
57.	Mecca: Mosque of al-Khīf, minaret (858 A.D.) (reconstruction)	38
58.	Qasr al-Hayr: General view	39
59.	Qasr al-Hayr: Lesser enclosure and tower from the south-west	39
60.	Harrān: Great Mosque, plan (by Creswell)	40
61.	Qayrawān: Mosque of Sīdī ʿUqbah, plan (by Creswell)	41
62.	Qayrawān: Mosque of Sīdī ʿUqbah, minaret (836 A.D.)	42
63.	Qayrawān: Mosque of Sīdī ʿUqbah, minaret, doorway	42
64.	Qayrawān: Mosque of Sīdī ʿUqbah, butress at south-east corner	43
65.	Tūnis: Mosque of al-Zaytūnah, minaret (8th cent. A.D.)	43
66.	Fez: Mosque of al-Qarawīyīn, minaret	44
67.	Sūsa: <u>Manār</u> from the west wall (859-868 A.D.)	45
68.	Sfax: Great Mosque, minaret (10th cent. A.D.)	45
69.	Qalʿat Banī Hammād: Minaret (1101 A.D.)	46
70.	Sūsa: <u>Ribaṭ</u> 's <u>Manār</u> (821 A.D.)	46
71.	Cordova: Great Mosque, plan	47
72.	Seville: Giralda (12th cent. A.D.)	48
73.	Marrākish: Minaret of al-Kutubīyah (12th cent. A.D.)	48

Fig.

74.	Rabāt: Minaret of Hassān	49
75.	Cordova: Great Mosque, minaret (reconstruction)	50
76.	Sicily: Church-towers	51
77.	Baghdad: Great Mosque of al-Manṣūr (766-808 A.D.) plan (by Herzfeld)	52
78.	Samarra: Great Mosque, Malwīyah (848-51 A.D.) from the south	53
79.	Samarra: Great Mosque, Malwīyah, from the south- east	53
80.	Samarra: Great Mosque, plan (by Creswell)	54
81.	Samarra: Great Mosque, Malwīyah, east side of the socle	55
82.	Samarra: Great Mosque, Malwīyah, niche on the socle	56
83.	Samarra: Great Mosque, Malwīyah, niche at the top	57
84.	Samarra: Great Mosque, a pier sketch (by Herzfeld)	58
85.	Samarra: Mosque of Abū Dulaf, minaret (before restoration)	59
86.	Samarra: Mosque of Abū Dulaf, minaret (after restoration)	59
87.	Samarra: Mosque of Abū Dulaf, plan (by Creswell)	60
88.	Samarra: Mosque of Abū Dulaf, niche on a pier facing the courtyard (after restoration)	61
89.	Samarra, Mosque of Abū Dulaf, minaret, niche on the socle (before restoration)	62
90.	Samarra: Mosque of Abū Dulaf, minaret, niches on the socle (after restoration)	63
91.	Samarra: Mosque of Abū Dulaf, minaret, socle and entrance, plan (by Creswell)	63
92.	Samarra; Mosque of Abū Dulaf, minaret, entrance from the south	64
93.	Samarra: Mosque of Abū Dulaf, minaret, entrance from the south-west	64
94.	A print of a cylindrical seal from Mesopotamia	65

Fig.

95.	A print of a cylindrical seal from Mesopotamia (c. 1250 B.C.)	66
96.	The Malwīyah with the ramp which has not been restored (by Creswell)	67
97.	Fīrūzābād; Tower of Gūr (reconstruction)	68
98.	Babylon; Tower of Babel (reconstruction, by Dombart- simplified)	69
99.	Cairo: Ibn Tūlūn's Mosque, minaret from the south-west	70
100.	Cairo: Ibn Tūlūn's Mosque, minaret from the west	70
101.	Cairo: Ibn Tūlūn's Mosque, plan (by Creswell)	71
102.	Cairo: Ibn Tūlūn's Mosque, minaret, ground entrance	72
103.	Cairo; Ibn Tūlūn's Mosque, minaret, <u>modillons à copeaux</u>	73
104.	Cairo: Ibn Tūlūn's Mosque, minaret, <u>modillons à copeaux</u>	74
105.	Cairo: Ibn Tūlūn's Mosque, minaret, coupled horse-shoe arch on the socle	75
106.	Cairo :Ibn Tūlūn's Mosque, minaret, coupled horse-shoe arch on the socle	75
107.	Cordova; Great Mosque, <u>modillons à copeaux</u> (958A.D.)	76
108.	Cordova: Great Mosque, <u>modillons à copeaux</u> (958A.D.)	77
109.	Cordova: Great Mosque, coupled ornamental horse-shoe arch	78
110.	Cordova: Great Mosque, coupled ornamental horse-shoe arch	79
111.	Cordova: Great Mosque, horse-shoe arched <u>mihṛāb</u>	80
112.	Cordova: Great Mosque, Puerta di San Estaben, horse-shoe arched entrance (855/6 A.D.)	81
113.	Cairo: Ibn Tūlūn's Mosque, minaret, west coupled horse-shoe arch	82
114.	Qayrawān, Mosque of Sīdī 'Uqbah, horse-shoe arched entrance (VIII cent.A.D.)	82
115.	Al-Mahdīyah: Great Mosque, entrance	83
	<u>Sources of illustrations</u>	84

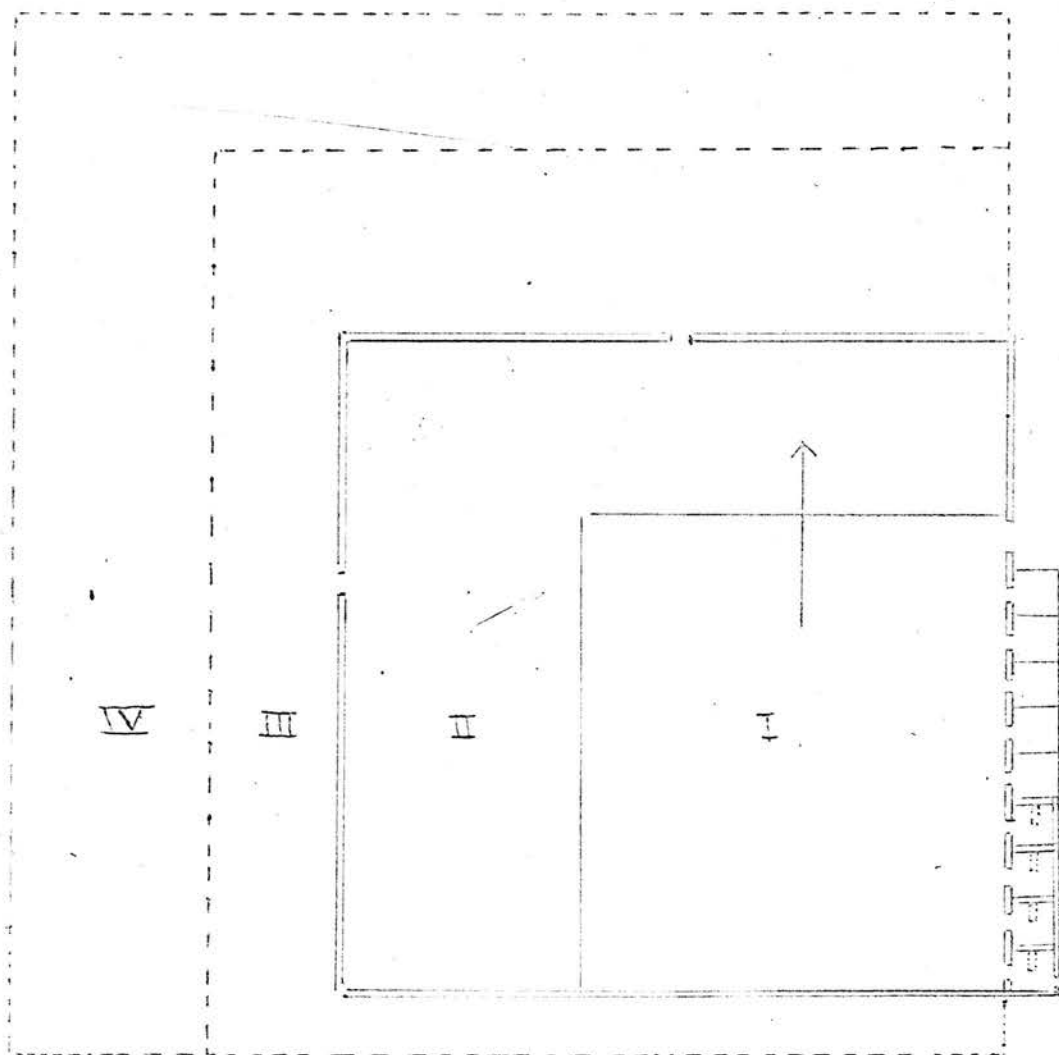


Fig. 1 The Prophet's Mosque (622-646/7 A.D.) (by Creswell, modified)

- I 70X60
- II 100X100
- III 140X120
- IV 160X150

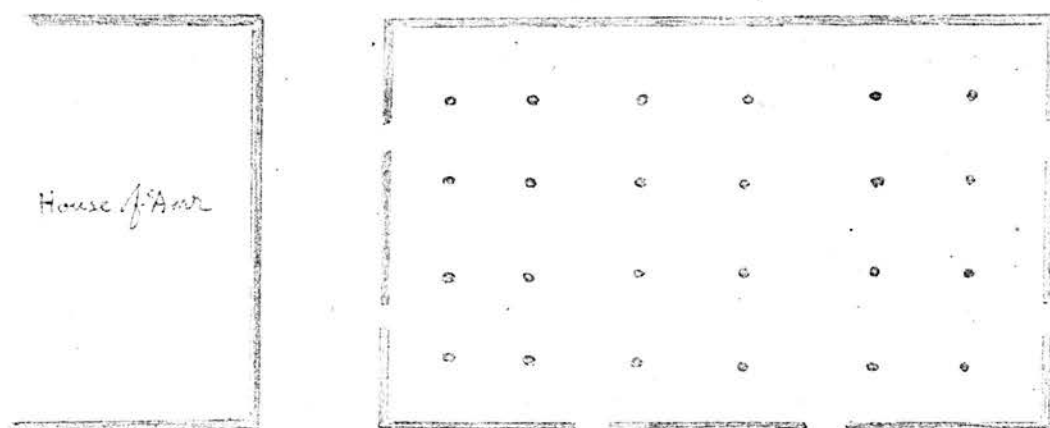


Fig. 2. Fictat. Amir's Mosque (642 A.D.), plan (by Corbet)

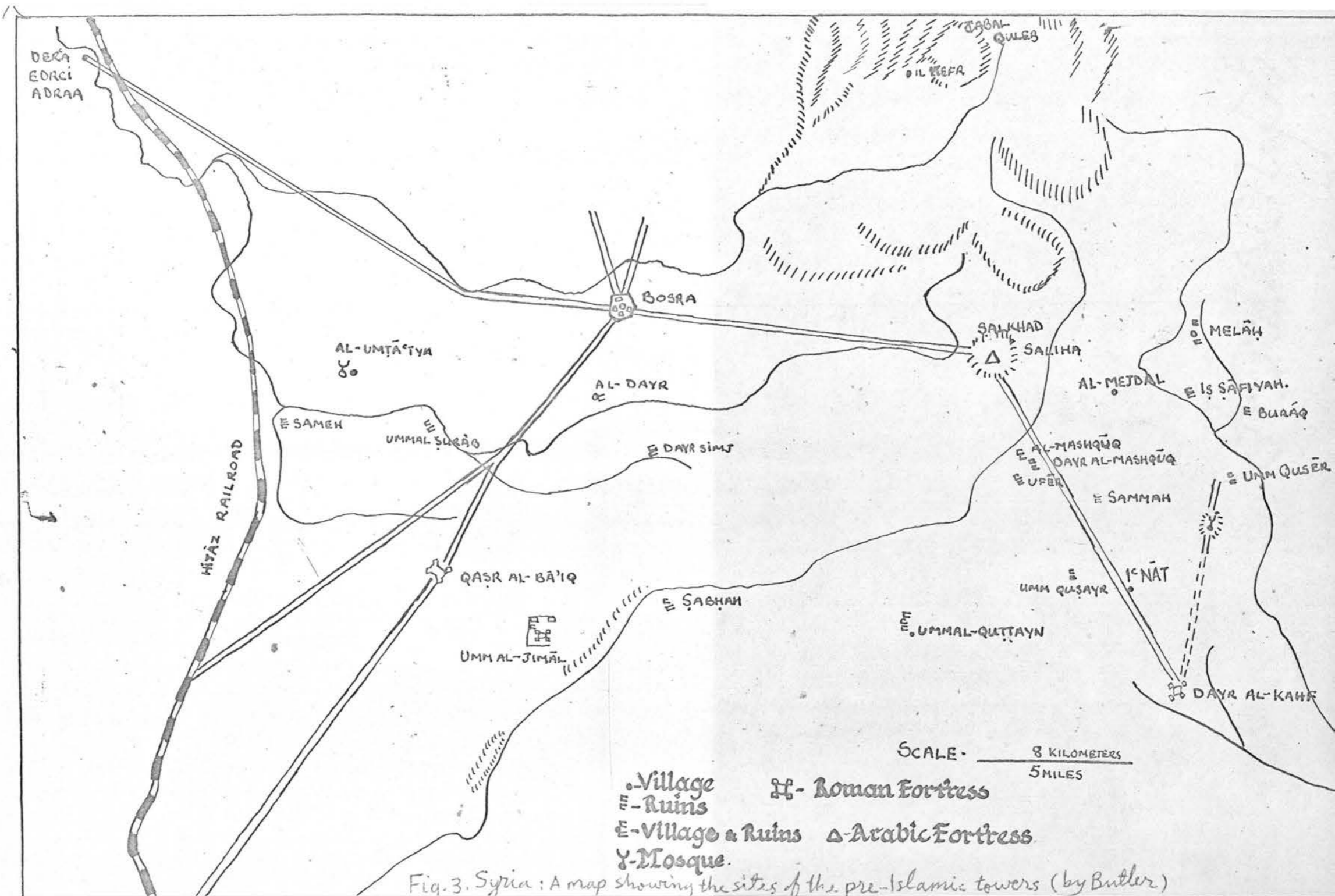


Fig. 3. Syria: A map showing the sites of the pre-Islamic towers (by Butler)

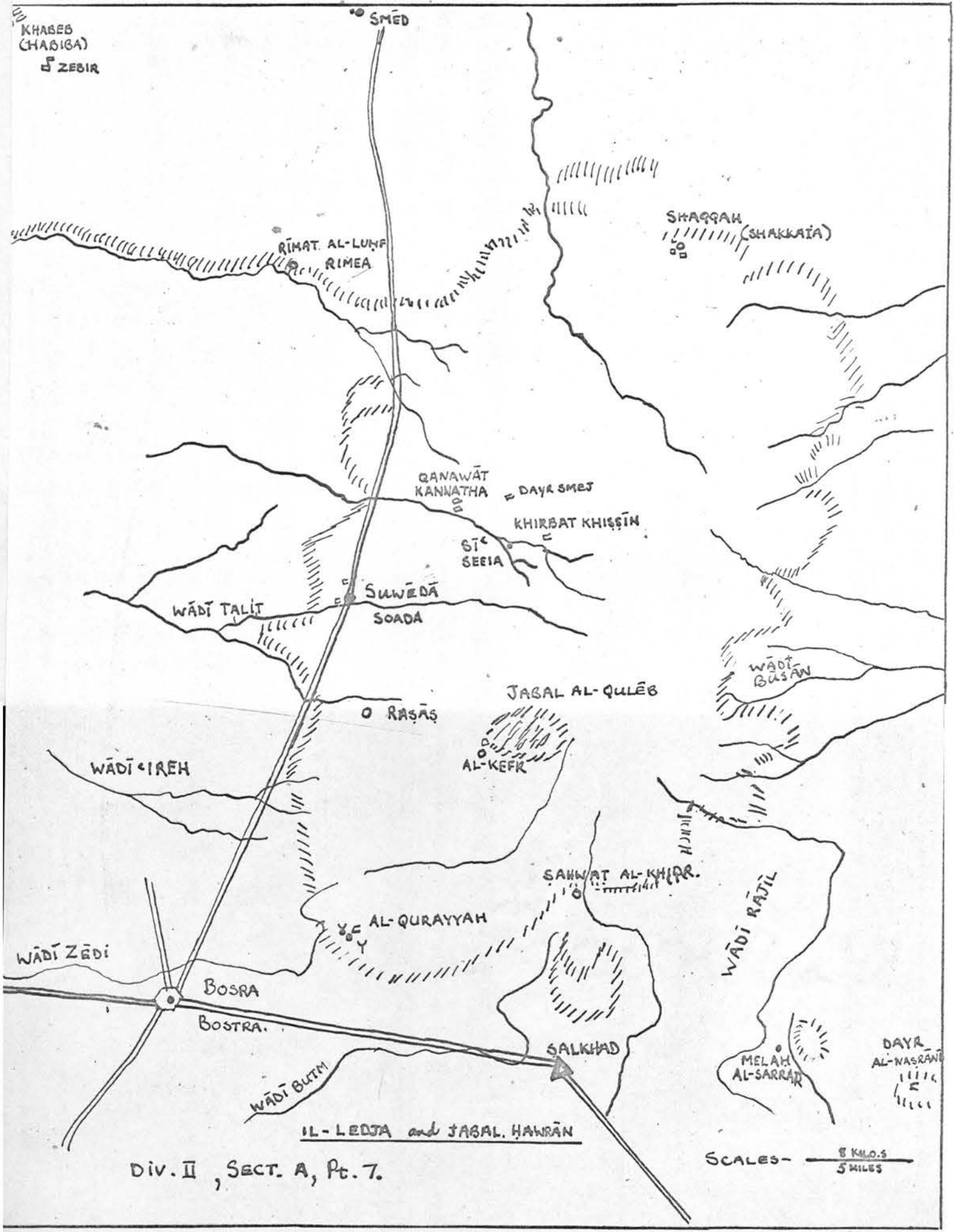


Fig. 4. Syria: A map showing the sites of the pre-Islamic towers. (by Butler)

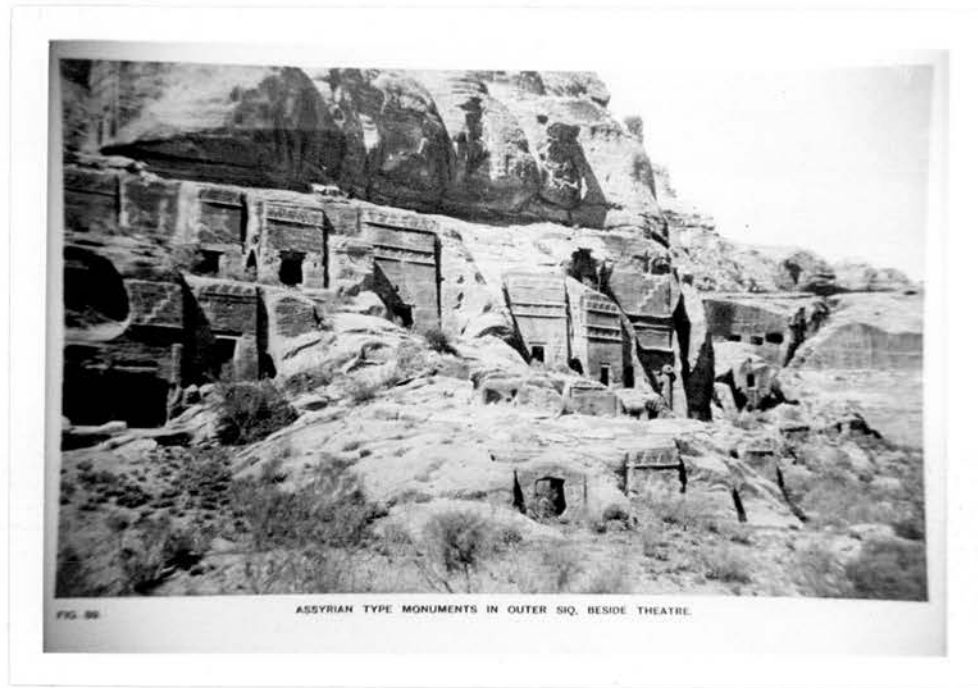


Fig.5.Petra:Tomb-façades

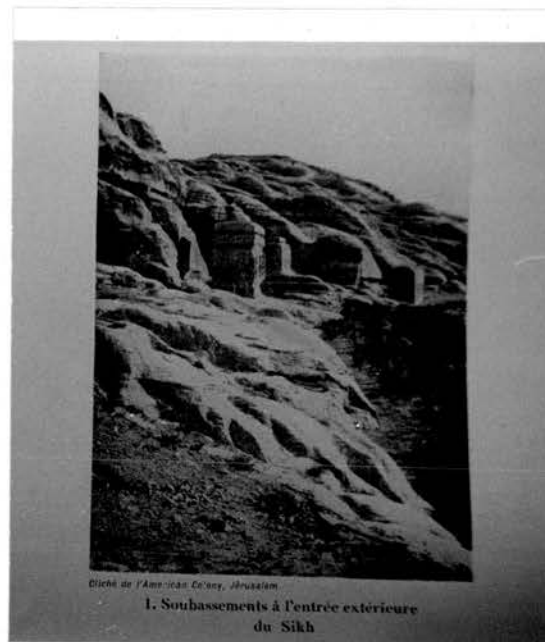
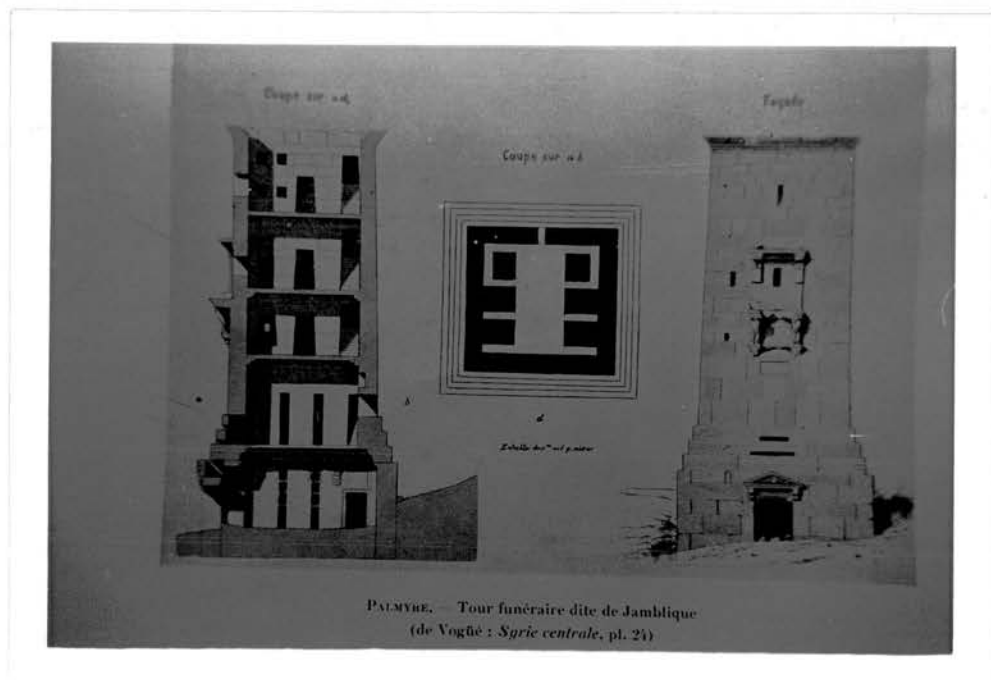


Fig.6.Petra:A Şihri̇j



Fig.7.Palmyra:Tomb-towers



Palmyra:Tomb-tower of Jamīshū(83A.D)

the poorer class. Many changes appear to have been made. There are a few fragments of the walls of a well built edifice, church; but the presence of modern houses prevents a thorough making of a ground-plan. A Greek inscription discovered here was a church here named in honour of St. Elias, and another inscrip

125. RĪMET IL-LUḤF.

Situated on the extreme southern edge of the Ledjā, as village is a Druse settlement of fair size. Fragments of ancient



Ill. 353. Rīmet il-Luḥf, Tomb. - View from the Southwest.

counting the podium or basement; but I am inclined to believe difference in the quality of the wall structure, that the uppermost

may be seen  
ated with  
structions of  
and several  
of ancient  
place, some  
in the upper  
to which t  
no doubt t  
nation of  
modern h  
would disco  
of houses  
this would  
of a stay  
was not pe

The  
undoubtedly  
ancient b  
tomb struc  
on the we  
(Ill. 353).  
inscription  
of one Ke  
to-day the

Fig.9. Rīmat al-Luḥf: Tomb-tower (2<sup>nd</sup>-3<sup>rd</sup> A.D.)



Fig. 10. Shaykh Ali-Qāsūn, Doorway of tower.

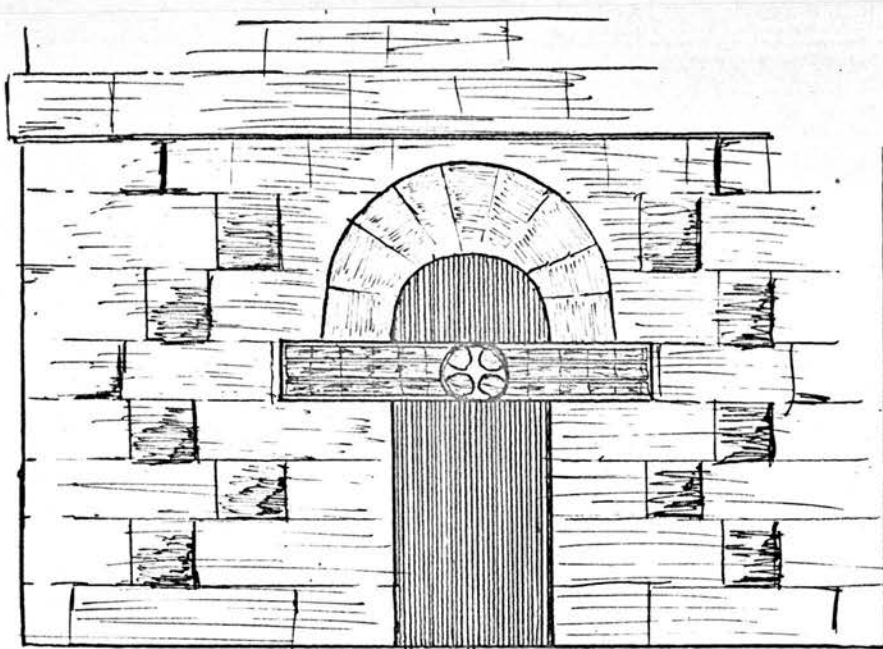
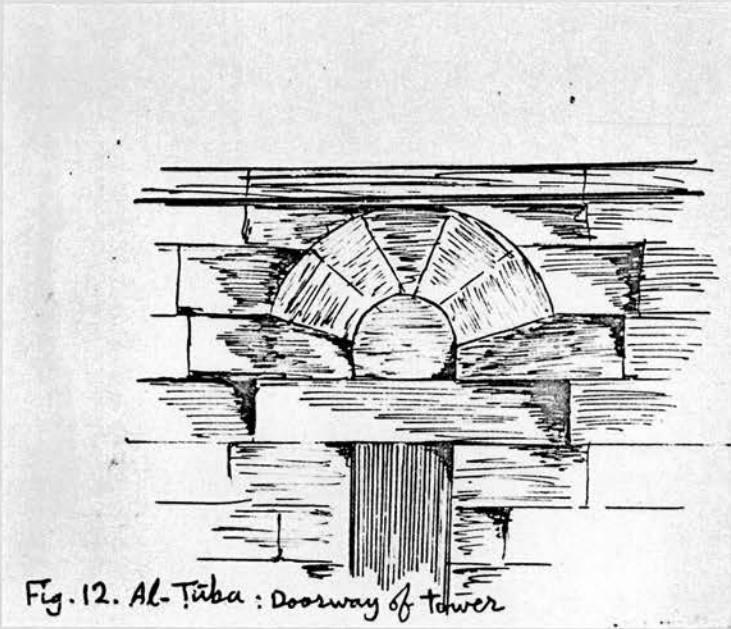


Fig. 11. Halbān; Doorway of tower



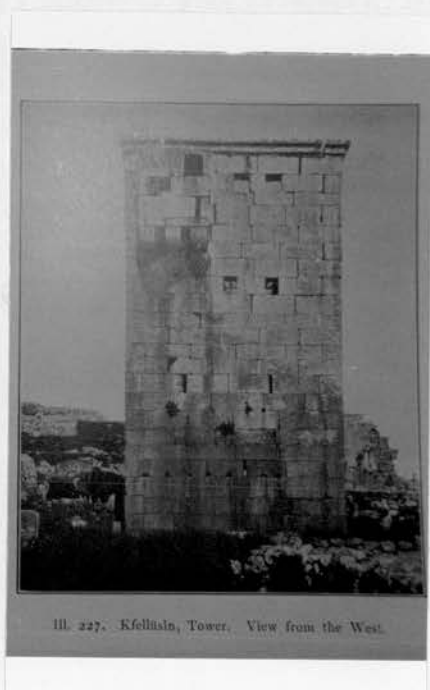


Fig.14.Kfellūsīn:Watch-tower  
(492A.D.)



Fig.15.Shaykh 'Alī Qāsūn:Watch-  
tower(6<sup>th</sup>cent.A.D.)

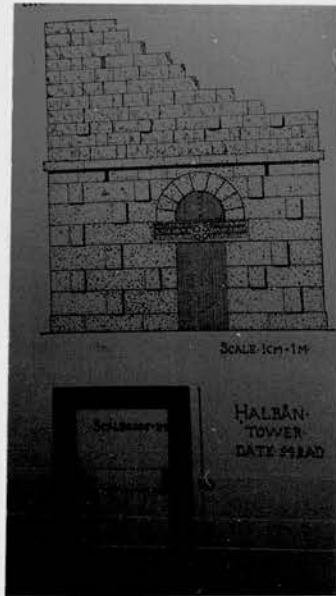


Fig.16.Halbān: Tower (542A.D.)

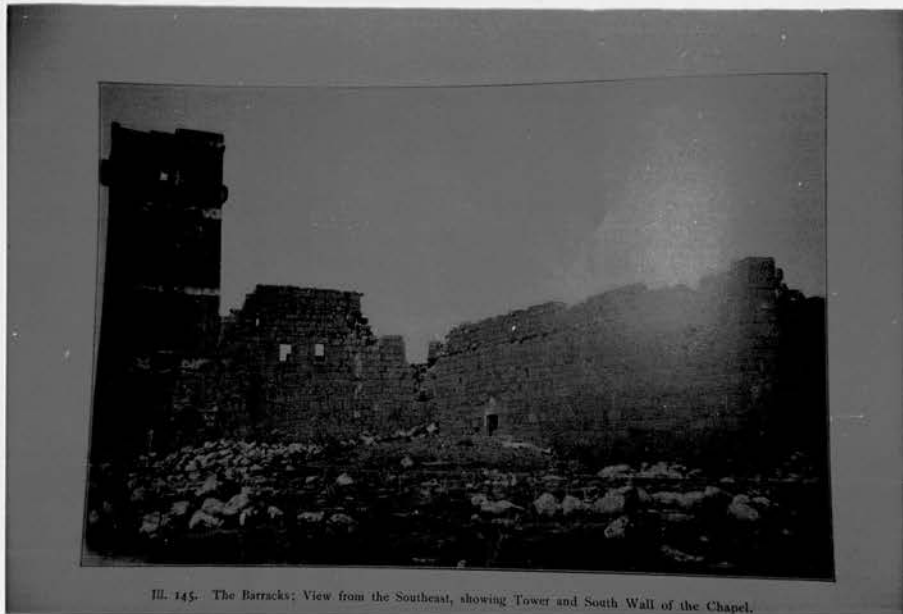


Fig.17.Umm al-Jimāl: Tower (c.412A.D.)

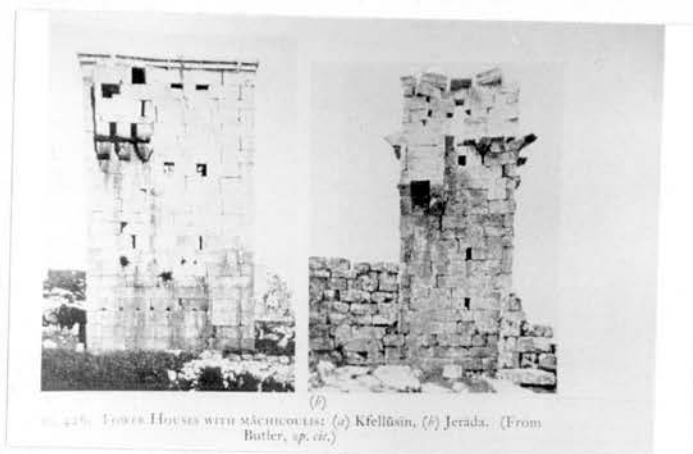


Fig.18.Jerāda: Tower

Fig.19.Ṣabḥa: Tower

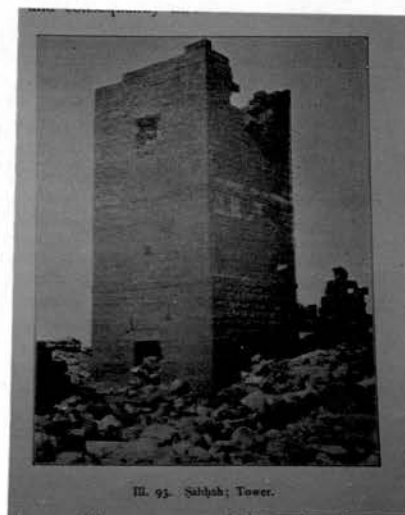




Fig.20. Al-Şanamayn: Tower



Fig.21. Burāq: House-towers

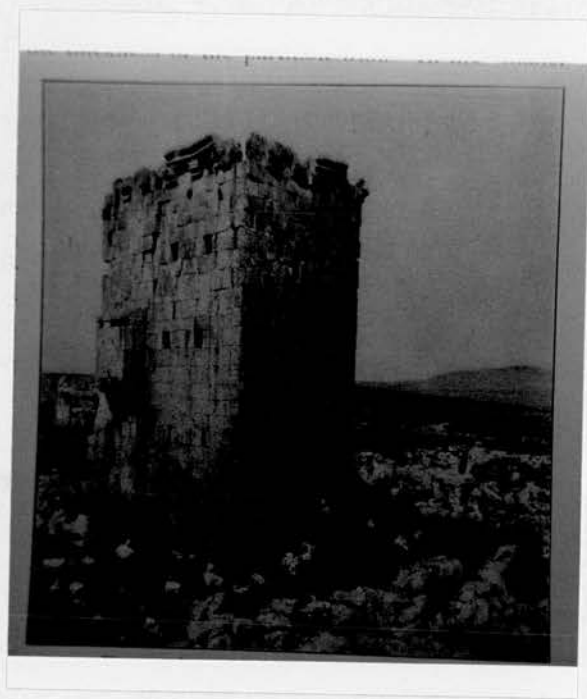


Fig. 22. Serjiblah: Five-storey house  
(6<sup>th</sup> cent. A.D.)

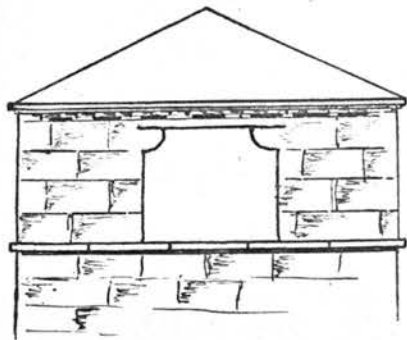


Fig. 23. Sameh; Top storey of church-tower

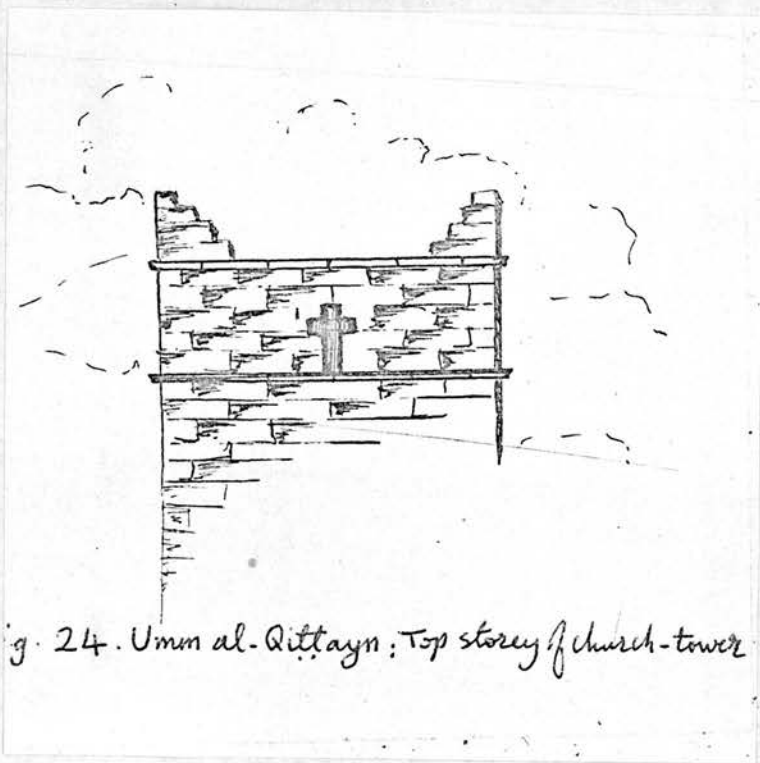


Fig. 24. Umm al-Qittayn: Top storey of church-tower

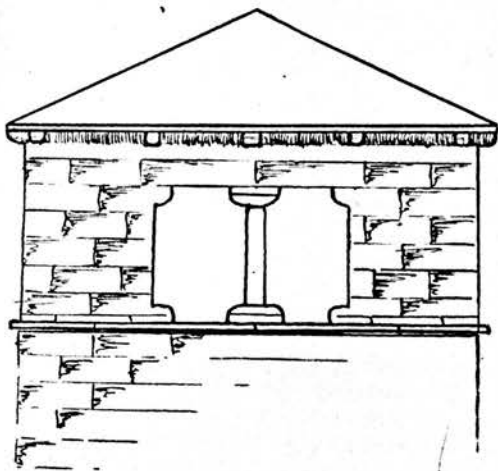


Fig. 25. Umm al-Surab: Top storey of church-tower



Fig.26. Qasr-al-Banāt: Church-tower (390-418A.D.)

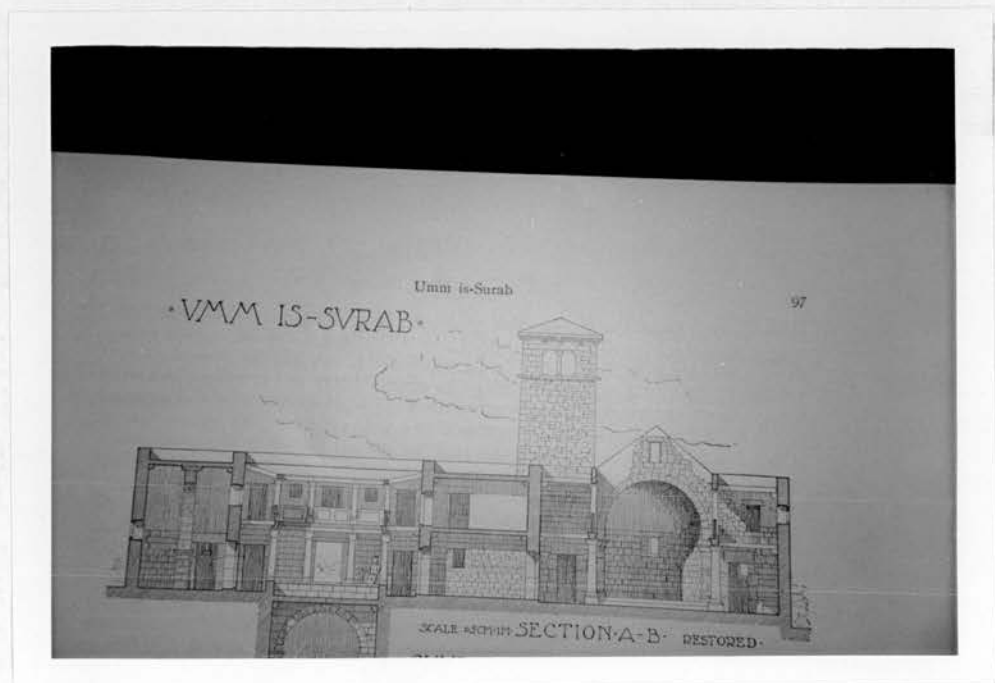


Fig.27. Umm al-Surāb: Church-tower (489 A.D.)

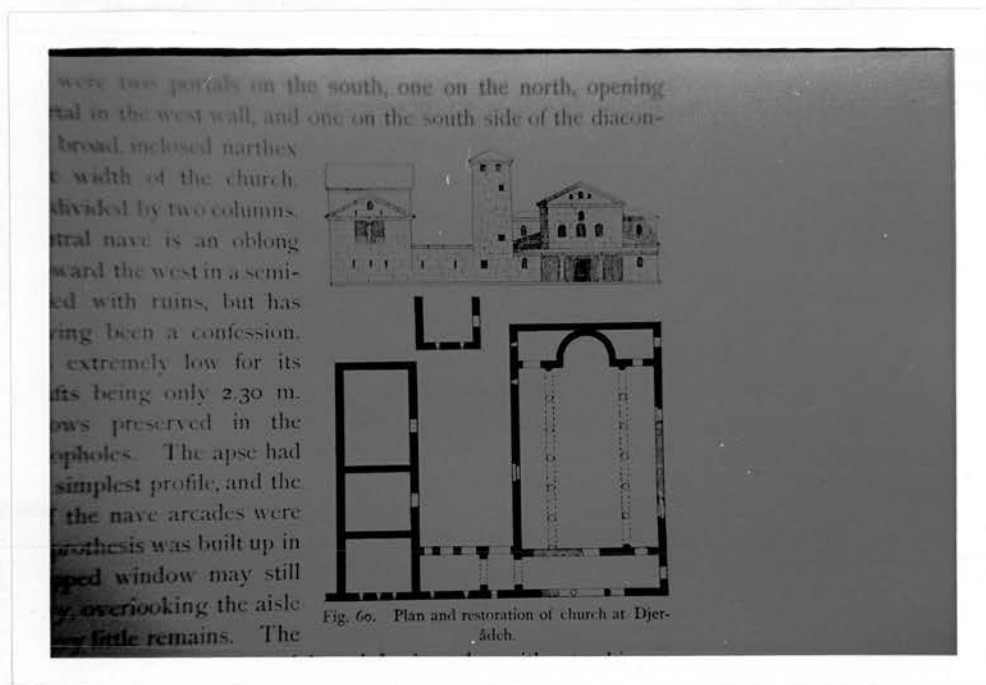


Fig. 28. Jerāda: Church-tower (5<sup>th</sup> cent. A.D.)

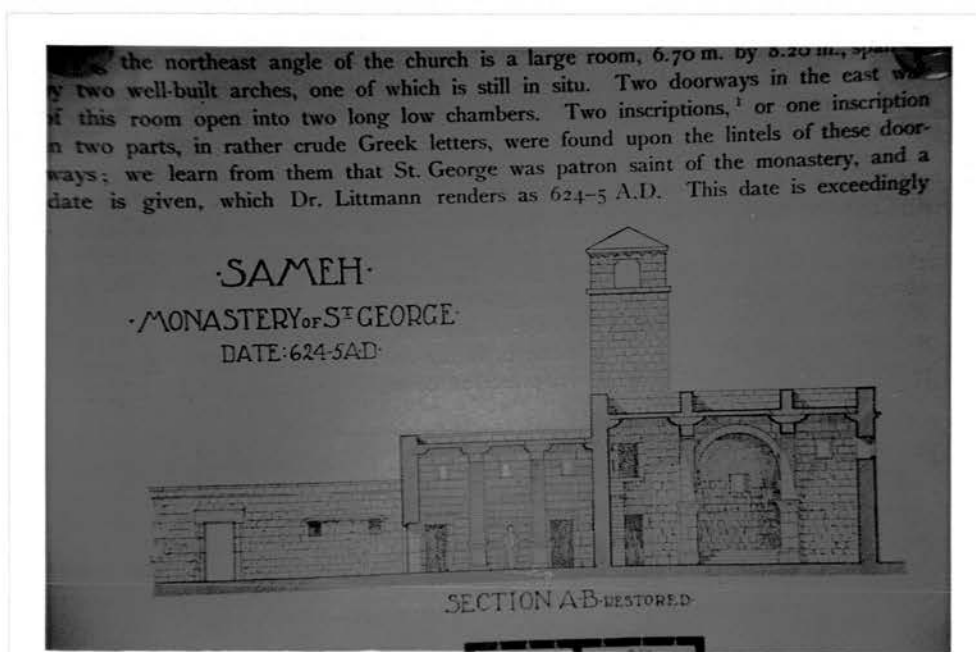


Fig. 29. Samah: Church-tower (624-25 A.D.)



Fig.30.Ummal-Rasās:Church-tower

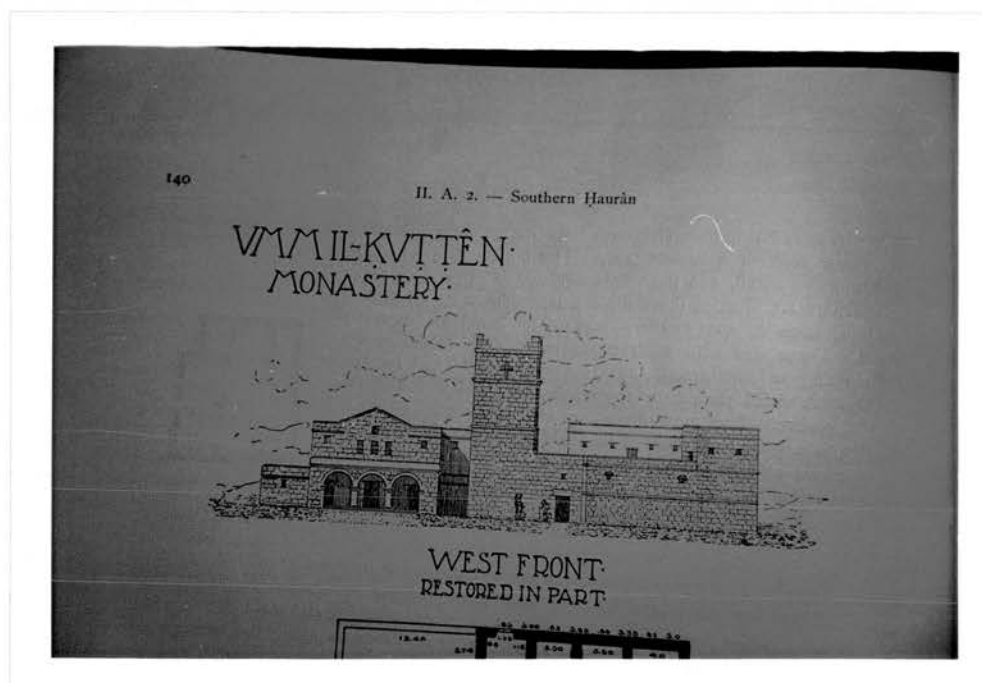


Fig.31.Umm al-Qitṭayn:Church-tower

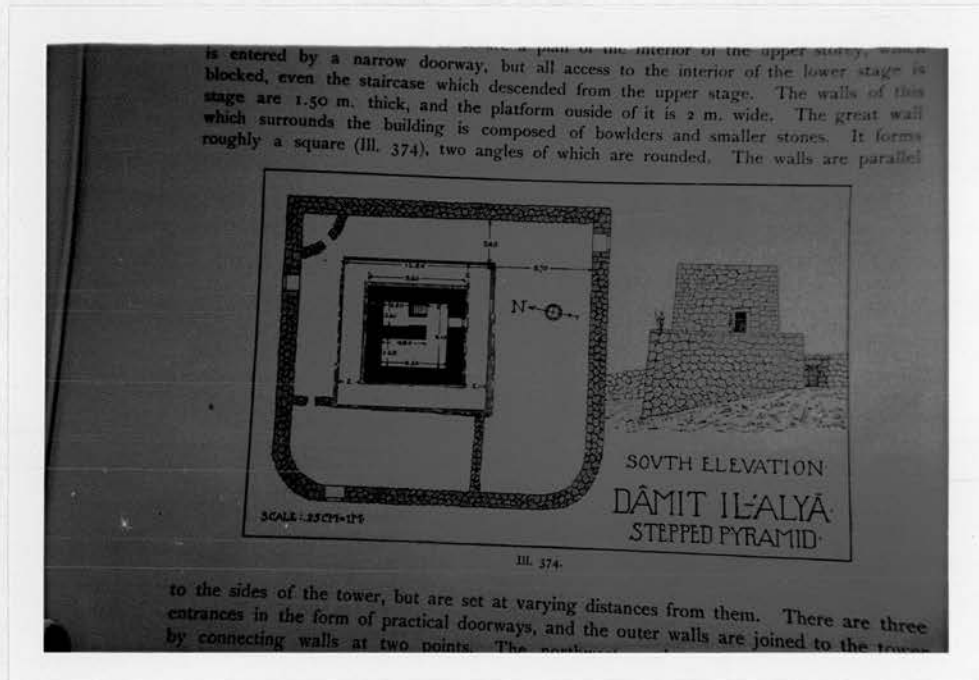


Fig.32.Dāmit al-'Alyā:Stepped-tower



Fig.33.Dānā:Tomb

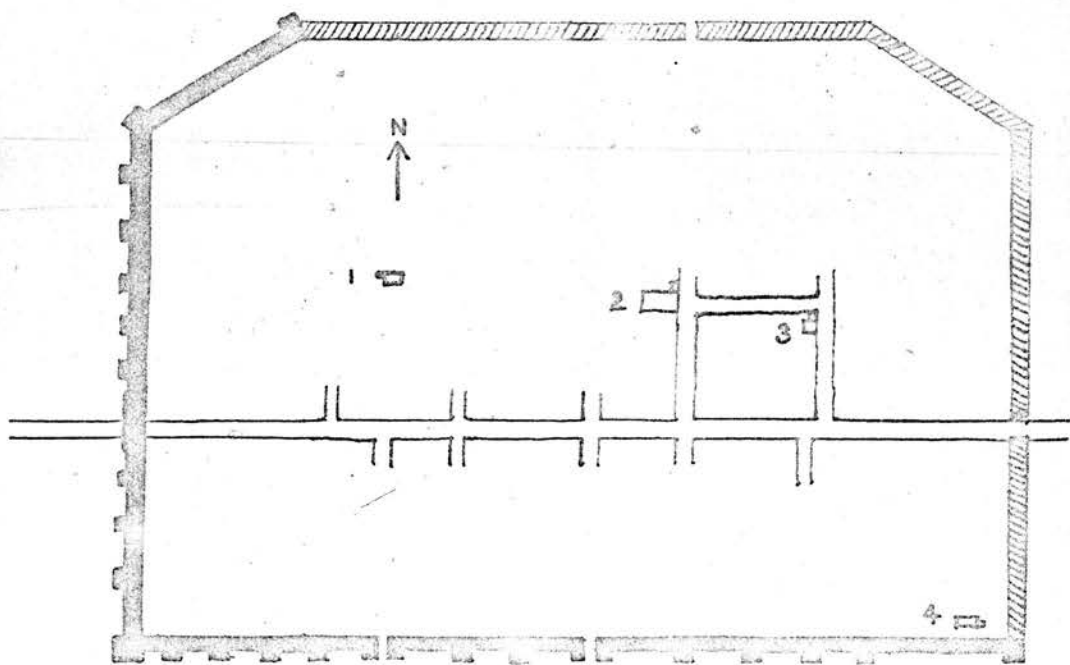


Fig. 34. Bosra, plan (from Provincia Arabia)

- 1 - al Khidr's Mosque.
- 2 - Umar's Mosque.
- 3 - Dayr al Khudima's Mosque.
- 4 - al Kuleb's Mosque.

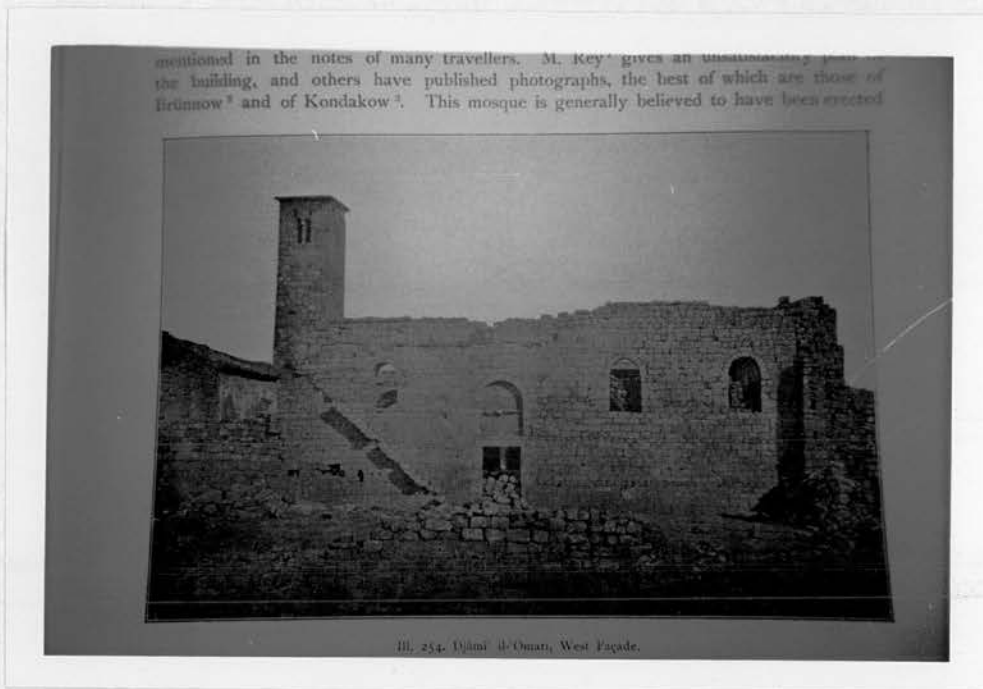


Fig.35. Bosra: Mosque of 'Umar, minaret

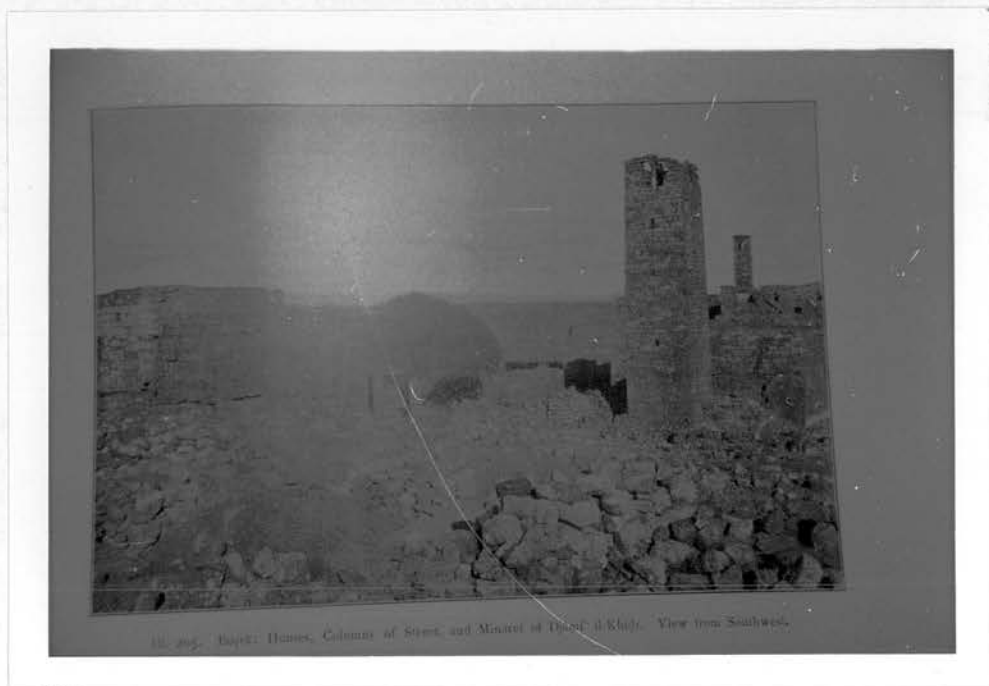
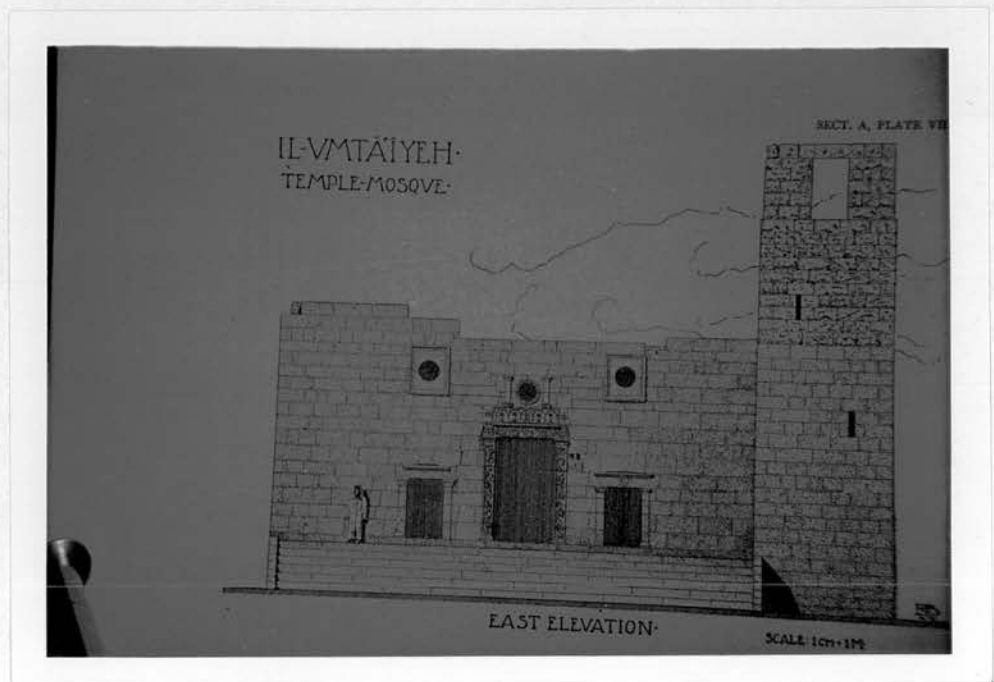


Fig.36. Bosra: Mosque of al-Khidr,  
minaret



Fig. 37. Bsra: Dayr al-Muslim, minaret

Fig. 38. Al-Umtā'iyah: Temple-  
mosque

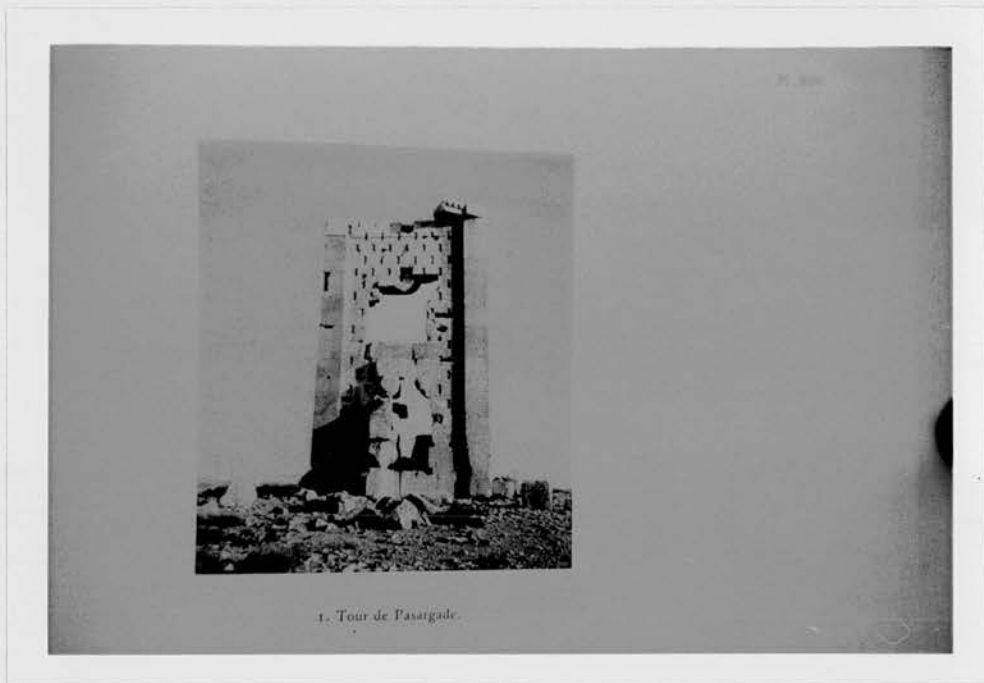


Fig.39.Pasargadae: Tower (549-529 B.C.)

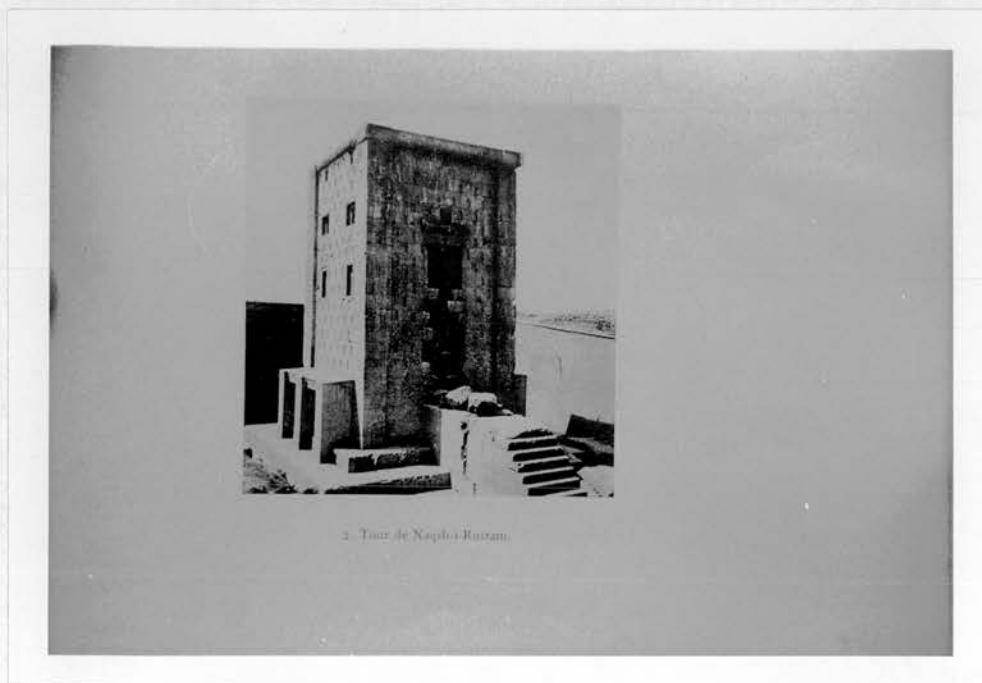


Fig.40.Naqsh-i Rostam: Tower (522-485 B.C.)



Fig.41. Nourābād: Tower (c. III-  
I cent. B.C.)

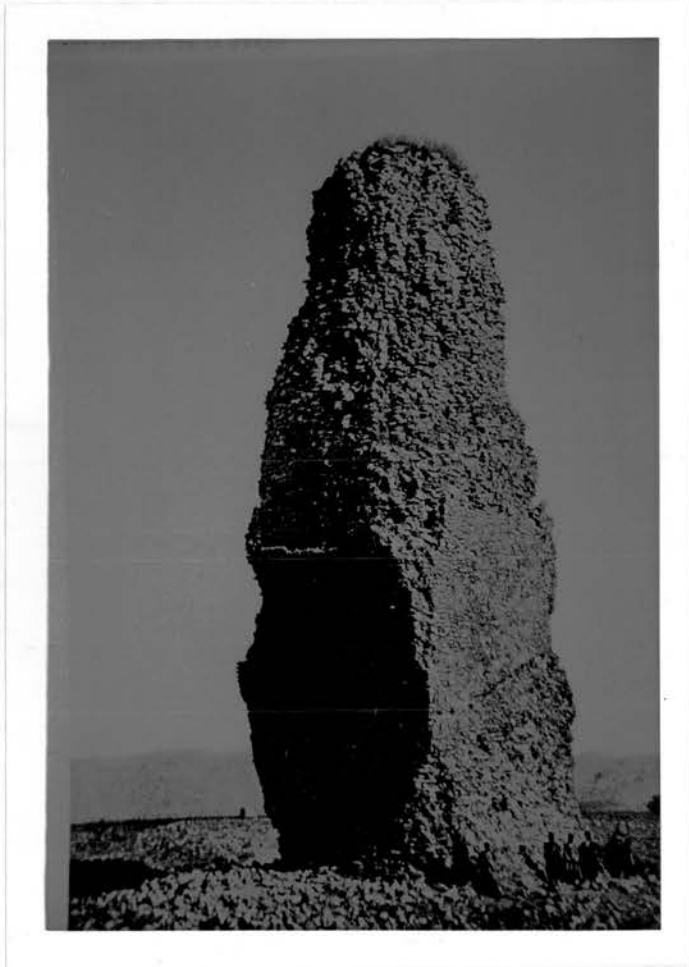


Fig.42. Firūzābād: Tower of Gūr  
(before reconstruction)



Fig.43. Firūzābād: Tower of Gūr  
(reconstruction, by Dieulafoy)

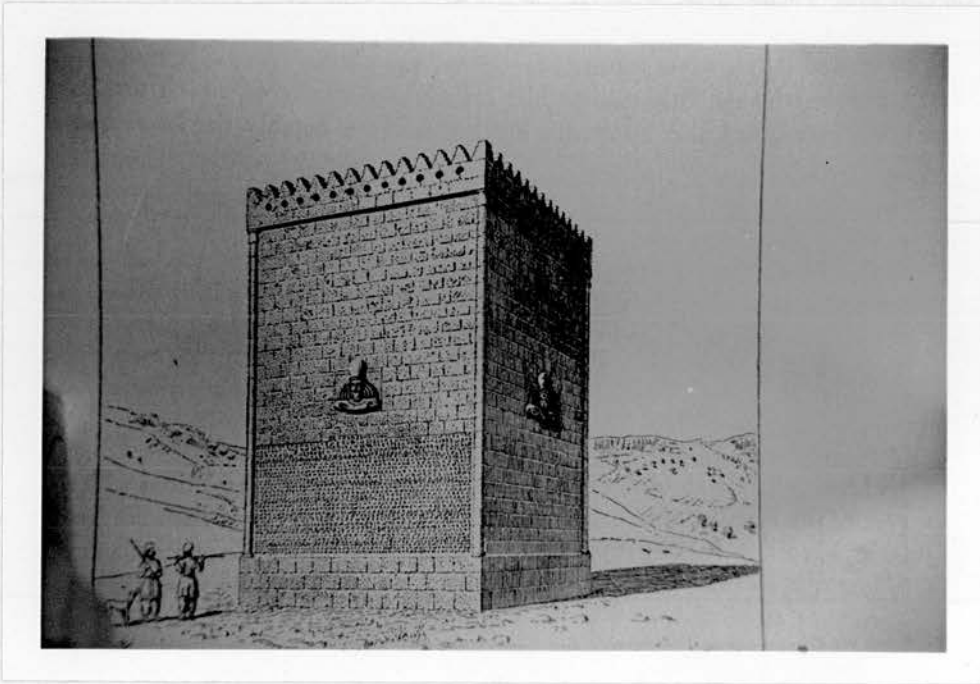
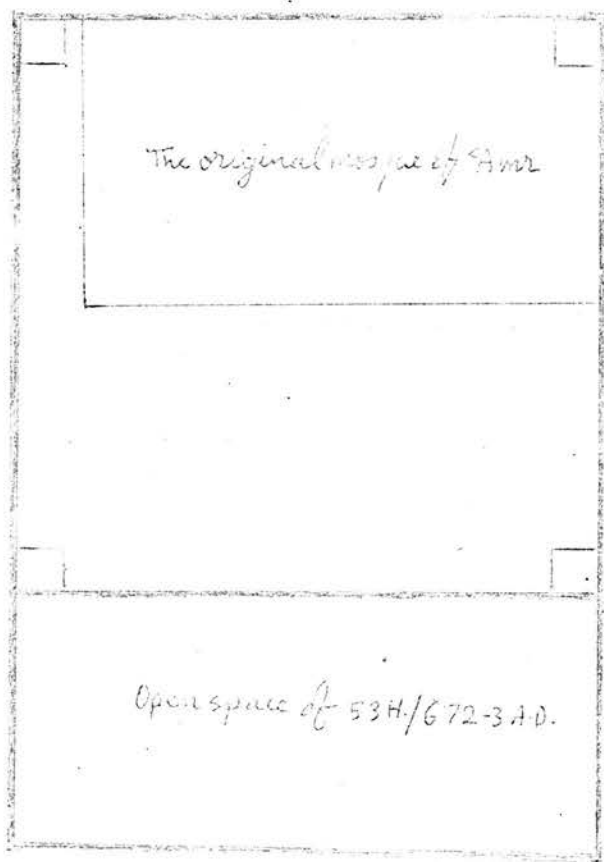


Fig.44. Pāikūlī: Commemorative monument of Narsé  
(293-301 A.D.) (reconstruction,  
by Reuther)



5. Fustat: Amris Mosque (672/3), plan (by Corbett with additions)

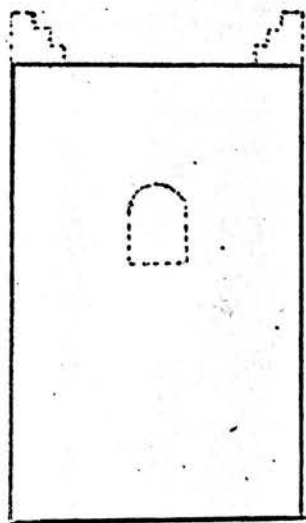


Fig. 46. Fustāt, Amr's mosque; minaret  
(672/3) (reconstruction)

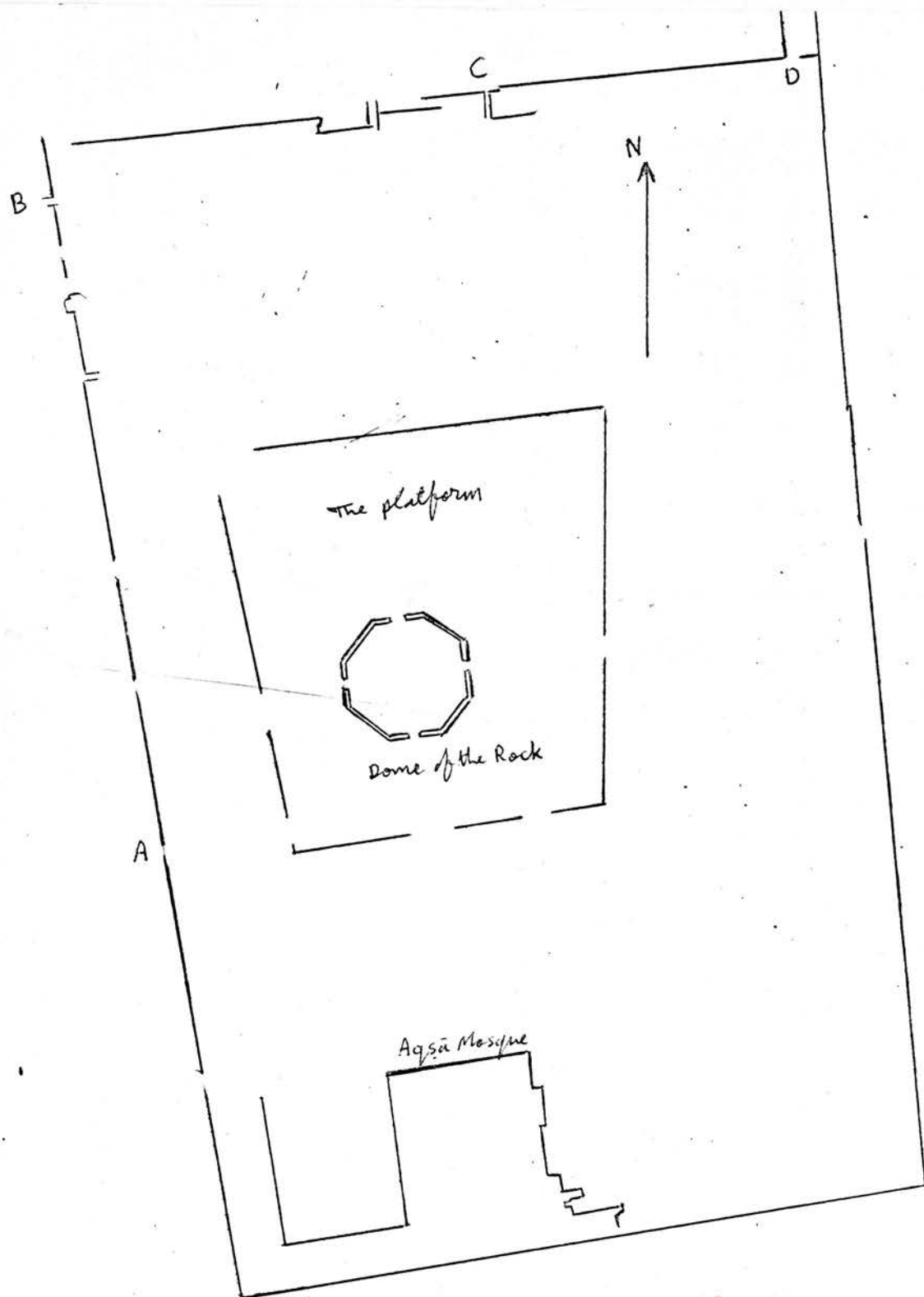


Fig. 47. Jerusalem, al-Haram al-Sharif (c. 1890), plan (by Le Strange—simplified)

- A. Bāb al-Silsilah (Gate of the Chain)
- B. Bāb al-Ghawānimah (Gate of Ghānim family)
- C. Bāb Hittah (Gate of the Remission)
- D. Bāb al-Asbāt (Gate of the Tribes)

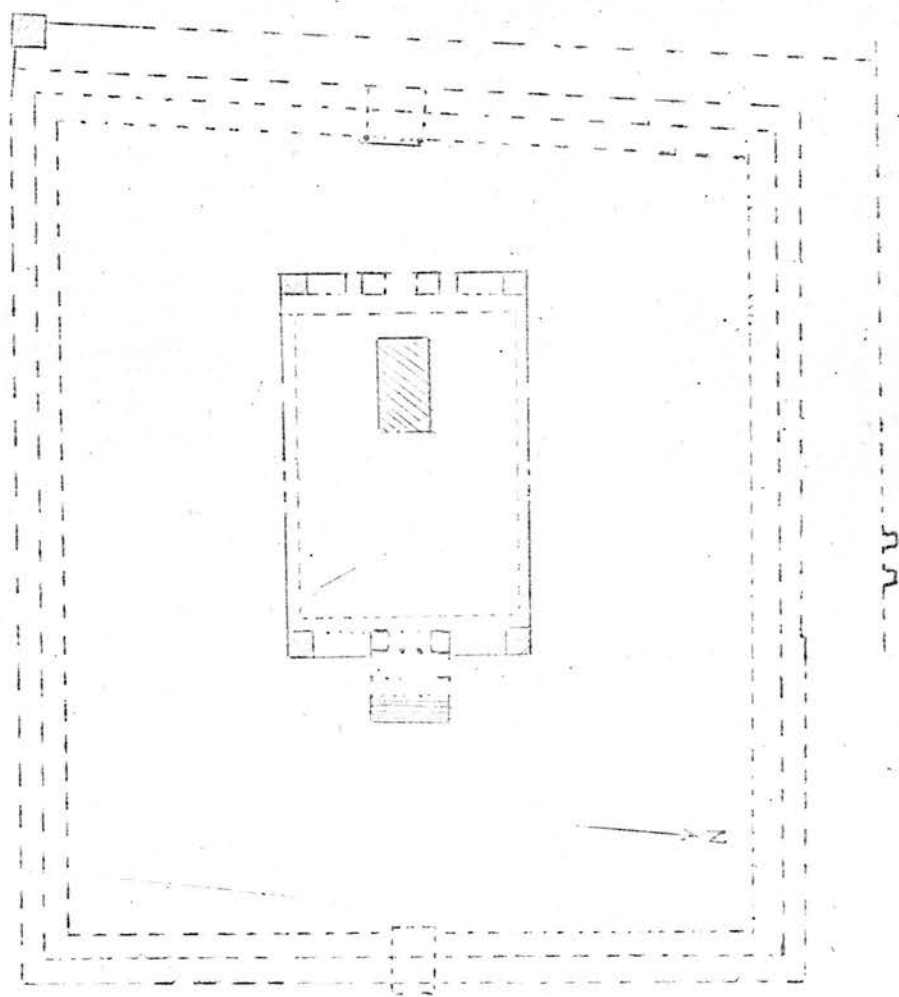
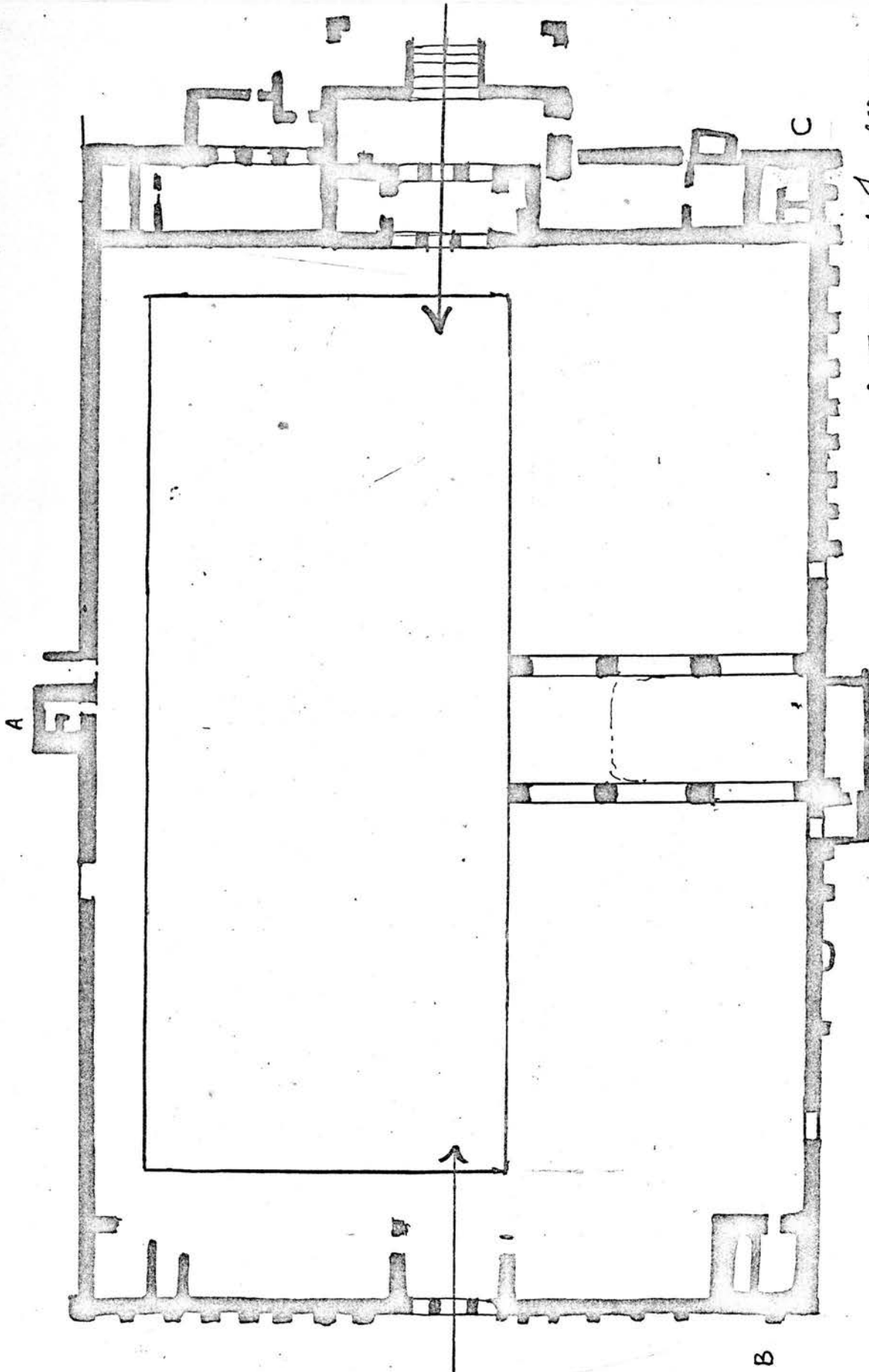


Fig. 48. Damascus, Temple of Jupiter, plan (by Sauvageot)



- A. The minaret of al-'Arūs
- B. The western minaret
- C. The minaret of Jesus

Fig. 49. Damascus: Great Mosque, plan (by Marçais)

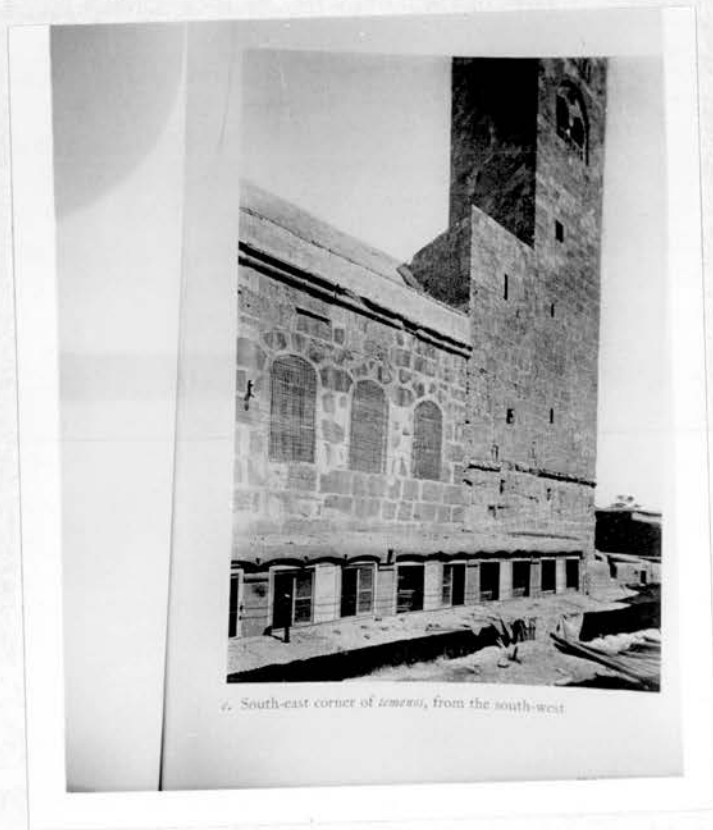


Fig.50.Damascus:Great Mosque,south-eastern corner

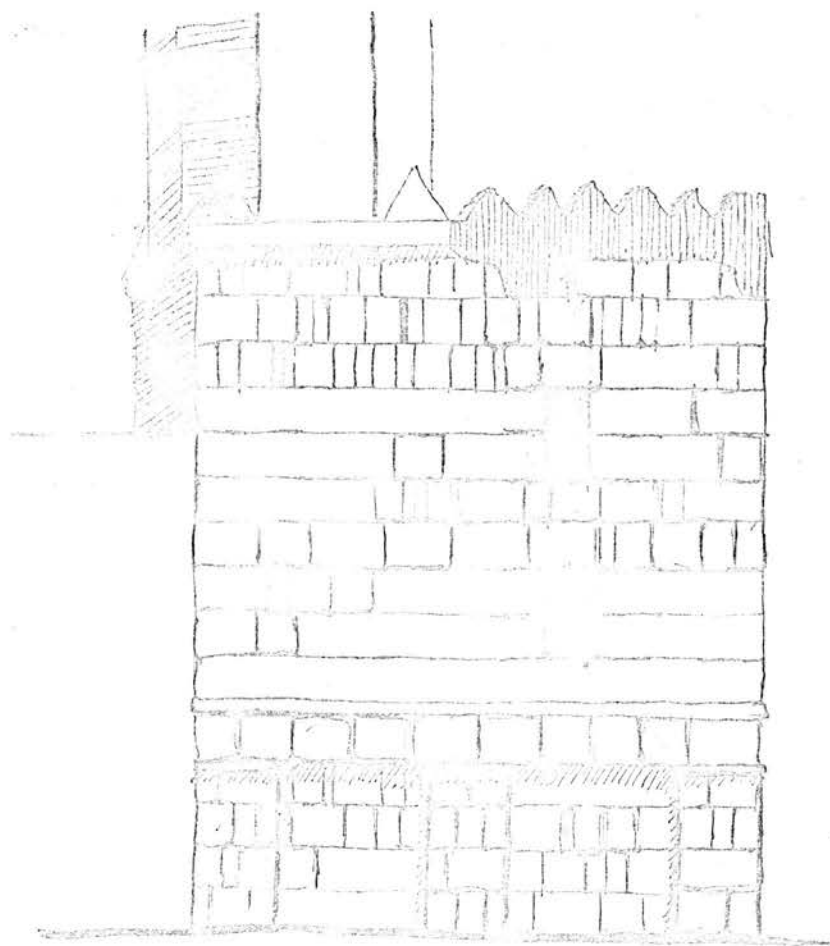


Fig. 1. A sketch of a building facade with a decorative cornice.

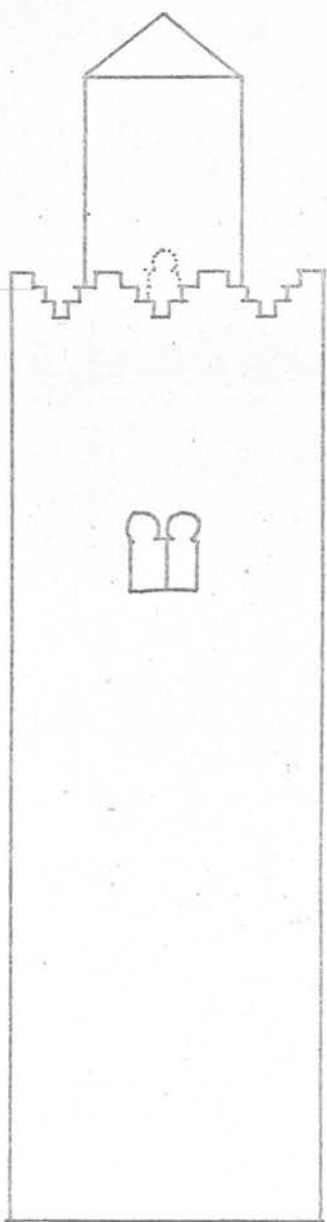


Fig. 52. Minaret of al-ʿArūs (705/6  
(reconstruction))



Fig. 53. Damascus: Great Mosque, minaret  
of al-ʿArūs  
(present one)

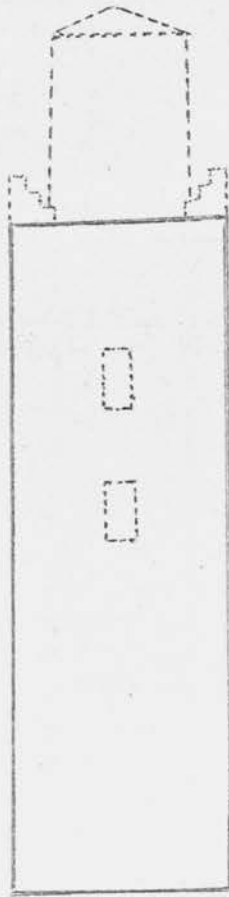


Fig. 54. Medina: Prophet's Mosque,  
minaret (706/7) (reconstruction)

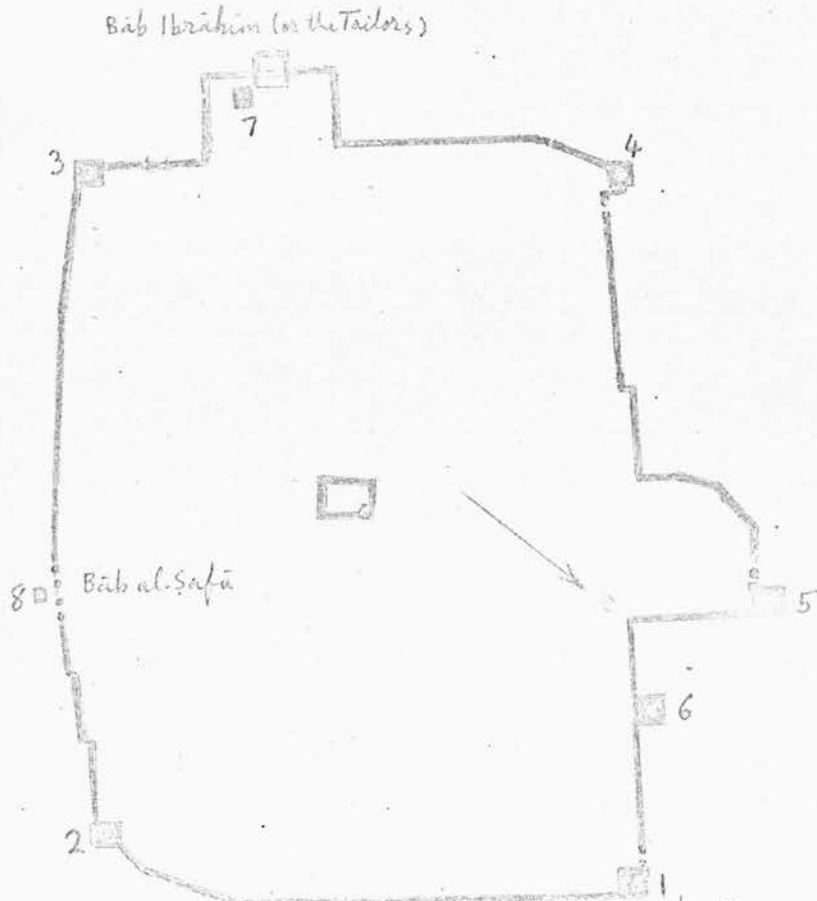


Fig. 55. Mecca: Sacred Mosque, plan (by Hughes)

1. Minaret of Bab al-Salam
2. " " " " al-Wadī
3. " " " " al-Wadī
4. " " " " al-Wadī
5. " " " " al-Zigārah (al-Nadwah)
6. " " " the Madrasah of Qayt Bey
7. " " " Bab Ibrahim (the Tailors)
8. " " " " al-Safū

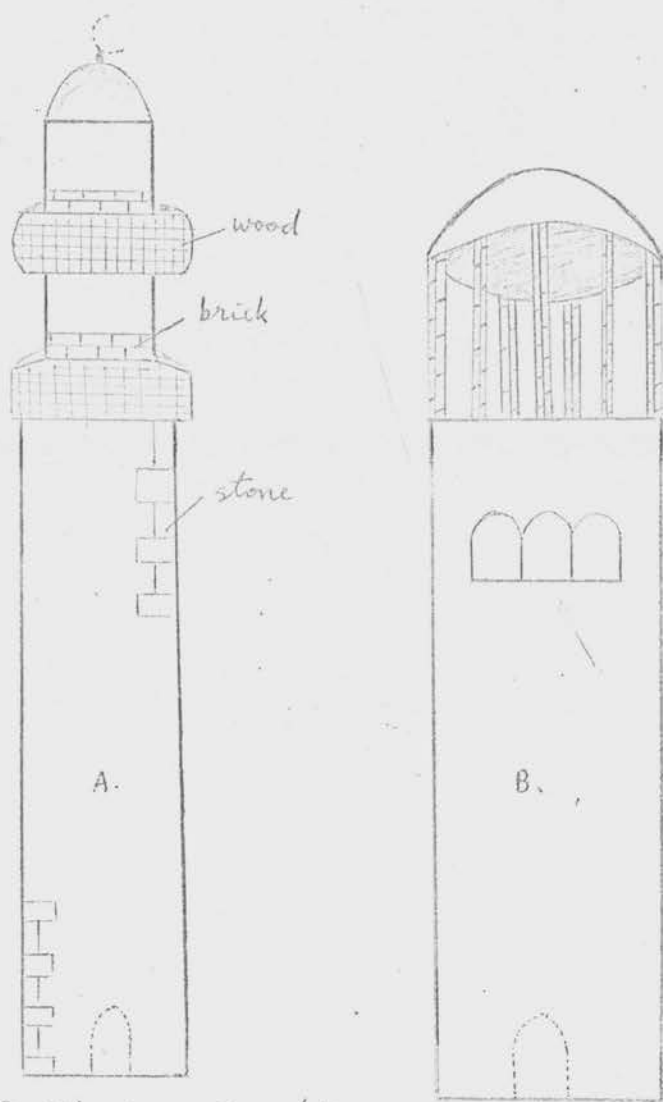


Fig. 56. Mecca: Sacred Mosque, minarets (1183 A.D.) (reconstruction)  
 A. One of the five similar minarets  
 B. The minaret at Bab Ibrahim

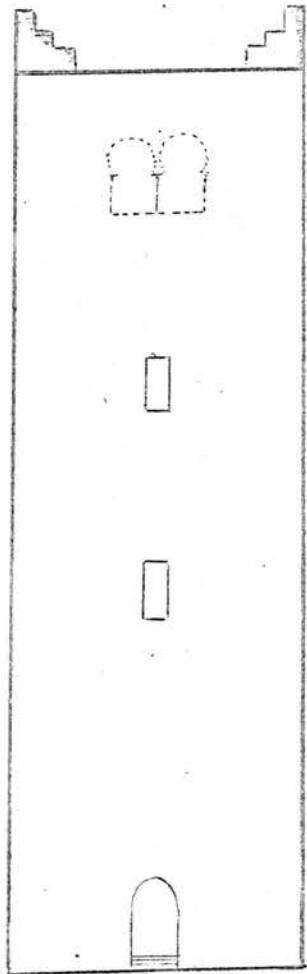


Fig. 57. Mecca: Mosque of al-Khif, minaret  
(858 A.D.) (reconstruction)



Fig.58.Qasr al-Hayr:General view



Fig.59.Qasr al-Hayr:Lesser enclosure and tower  
from the south-west

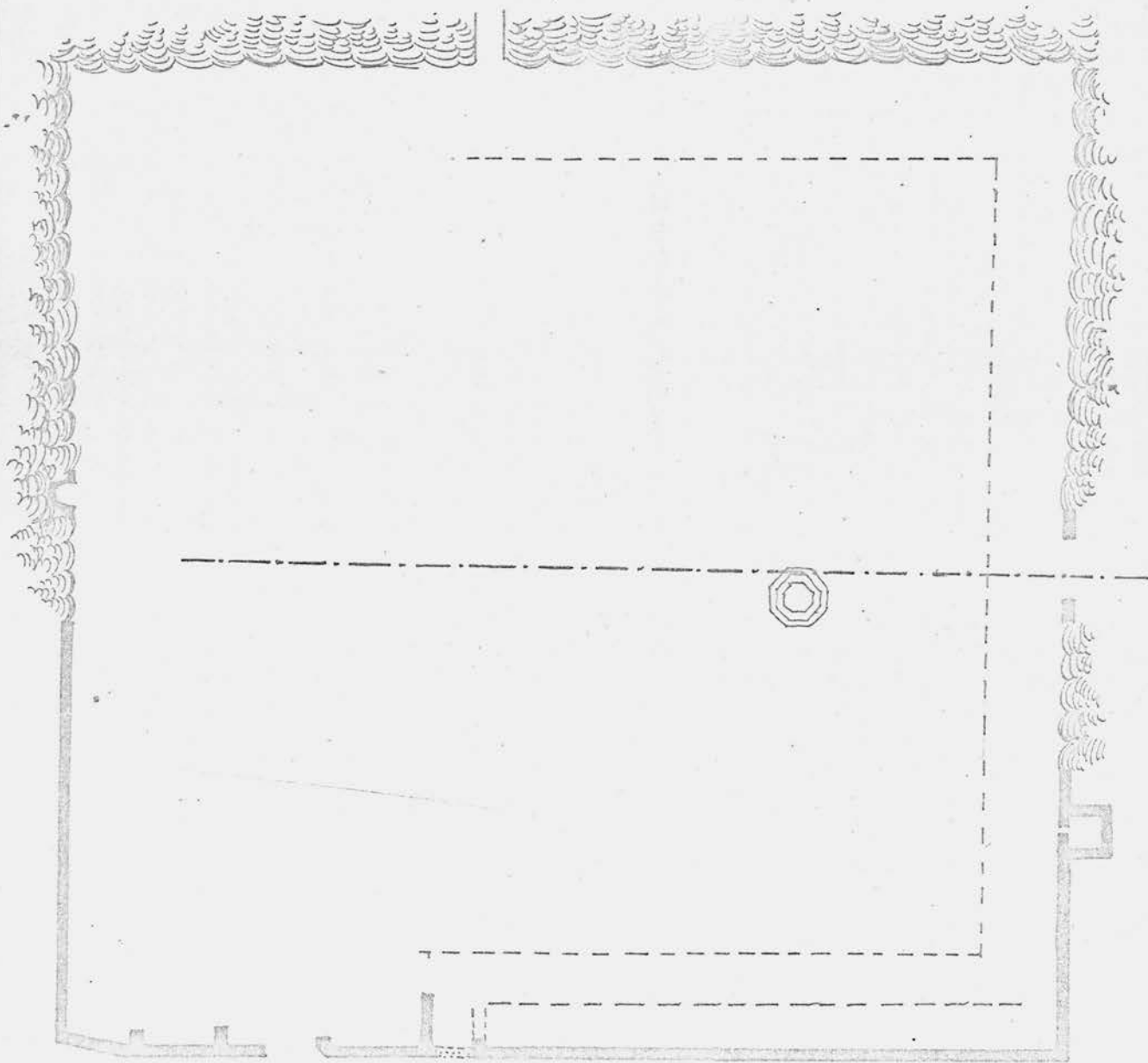


Fig. 60. Harrân: Great Mosque, plan. (by Creswell)

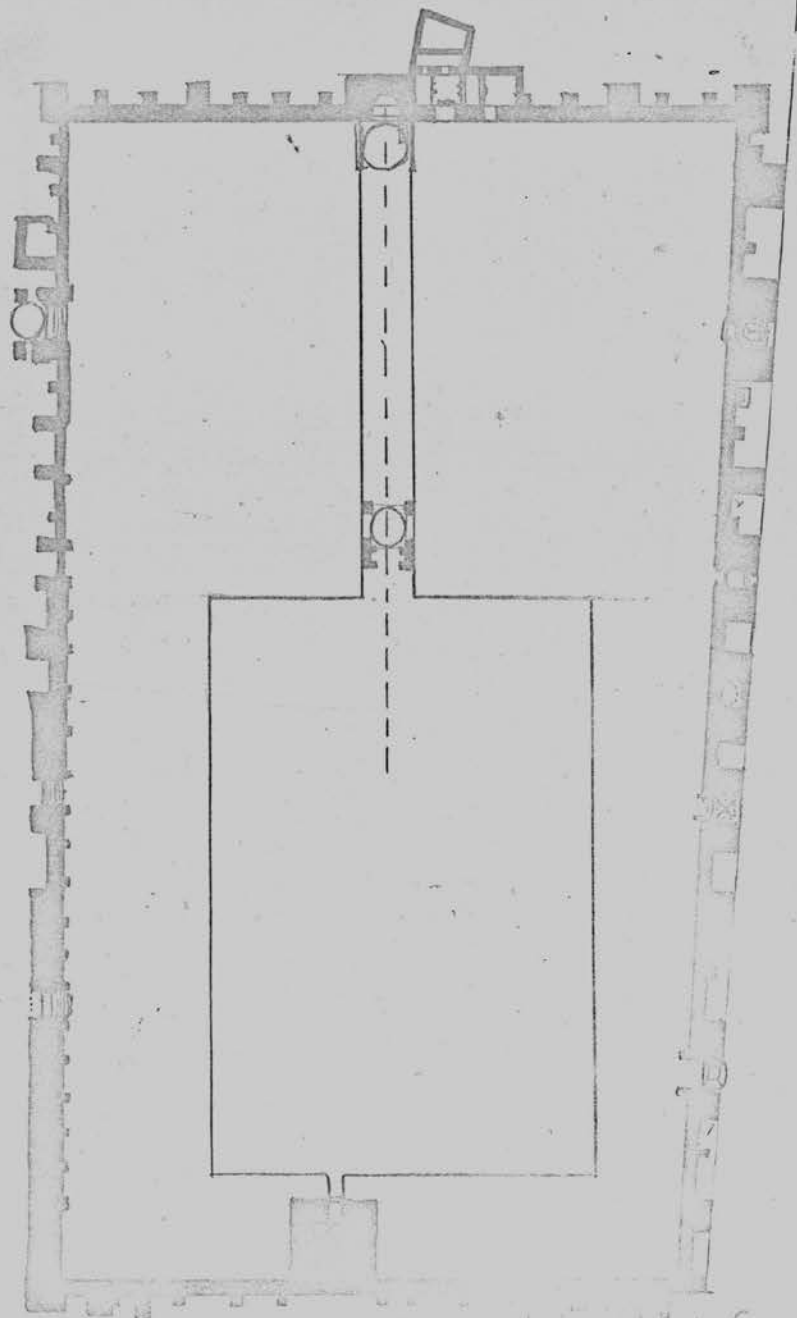


Fig. 61. Qayrawān, Mosque of Sitt Ulfah, plan (by Creswell)



Fig.62.Qayrawān: Mosque of Sidi Uqbah, minaret

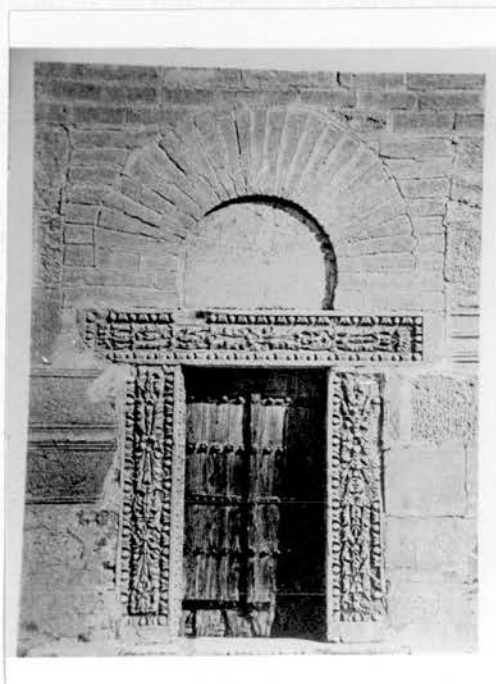


Fig.63.Qayrawān: Mosque of Sidi Uqbah,  
minaret, doorway

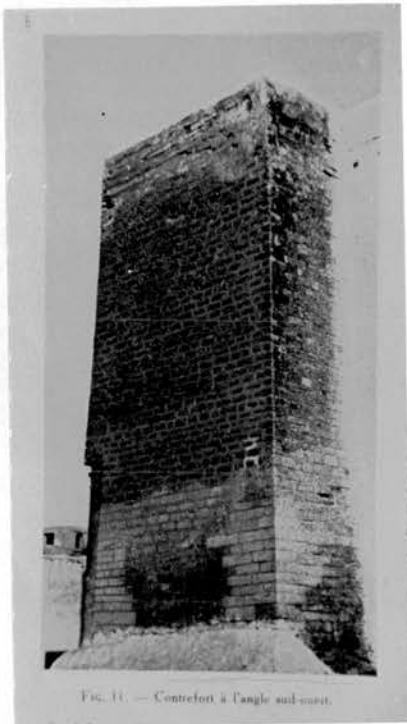


Fig.64. Mosque of Sīdī  
Uqbah, butress at south  
-east corner

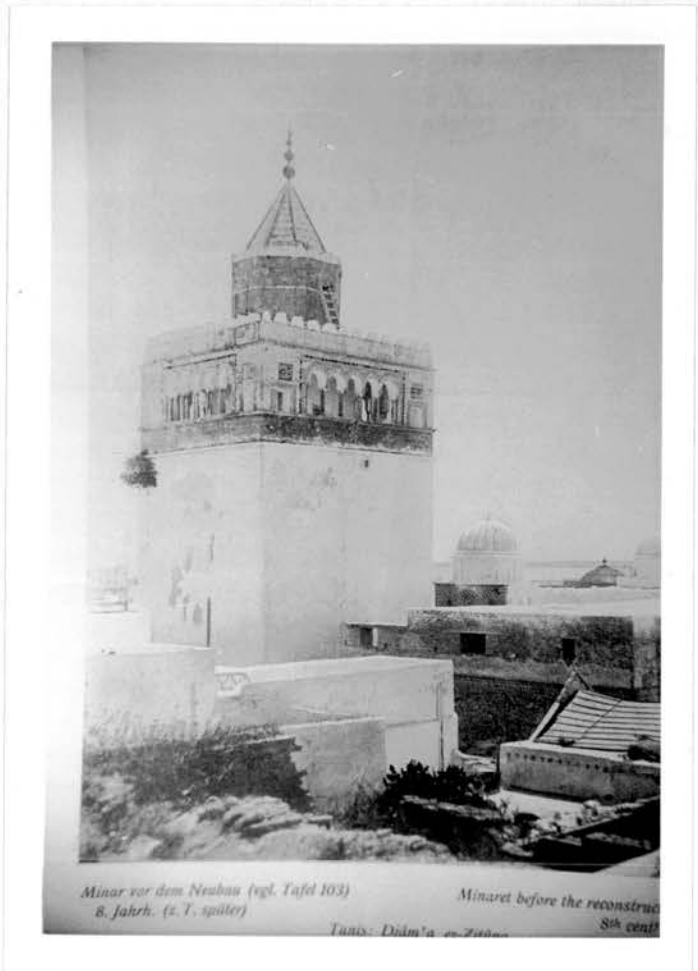


Fig.65. Tūnis: Mosque of al-Zaytūnah,  
minaret (8<sup>th</sup> cent. A.D.)

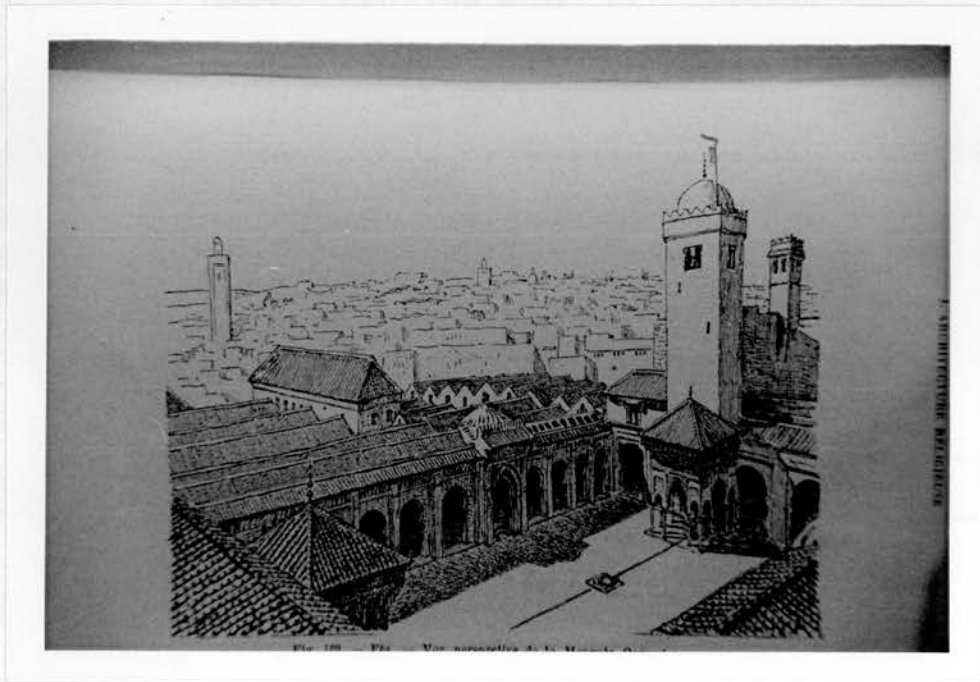


Fig.66.Fez: Mosque of al-Qarawīyīn, minaret



Fig.67. Sūsa: Manār from the west wall (859-868 A.D.)

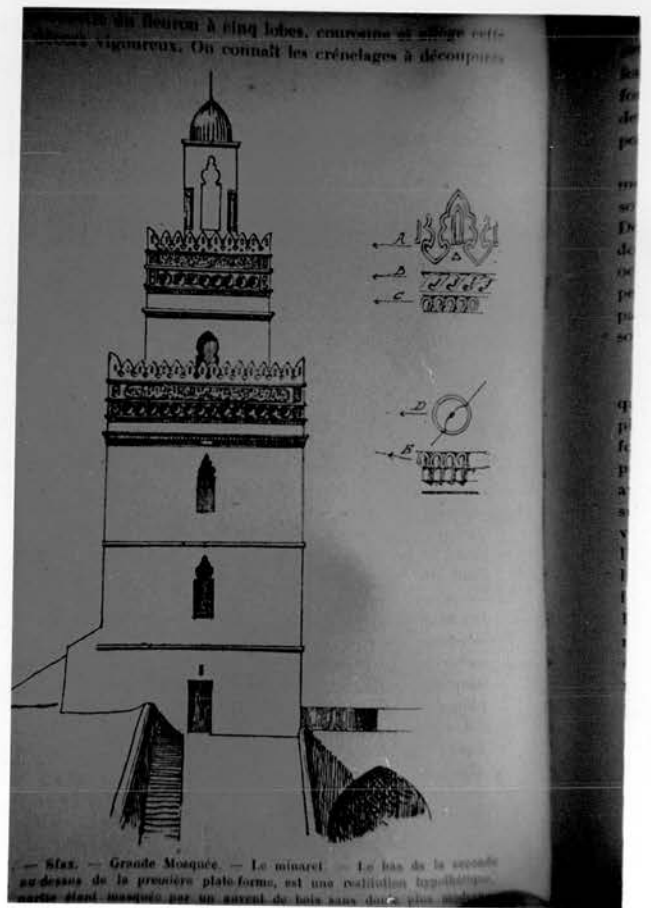


Fig.68. Sfax: Great Mosque, minaret (10<sup>th</sup> cent. A.D.)



Fig.69 Qal'at Banī Hammād: Minaret  
(1101 A.D.)



Fig.70. Sūsa: Ribāt's manār (821 A.D.)

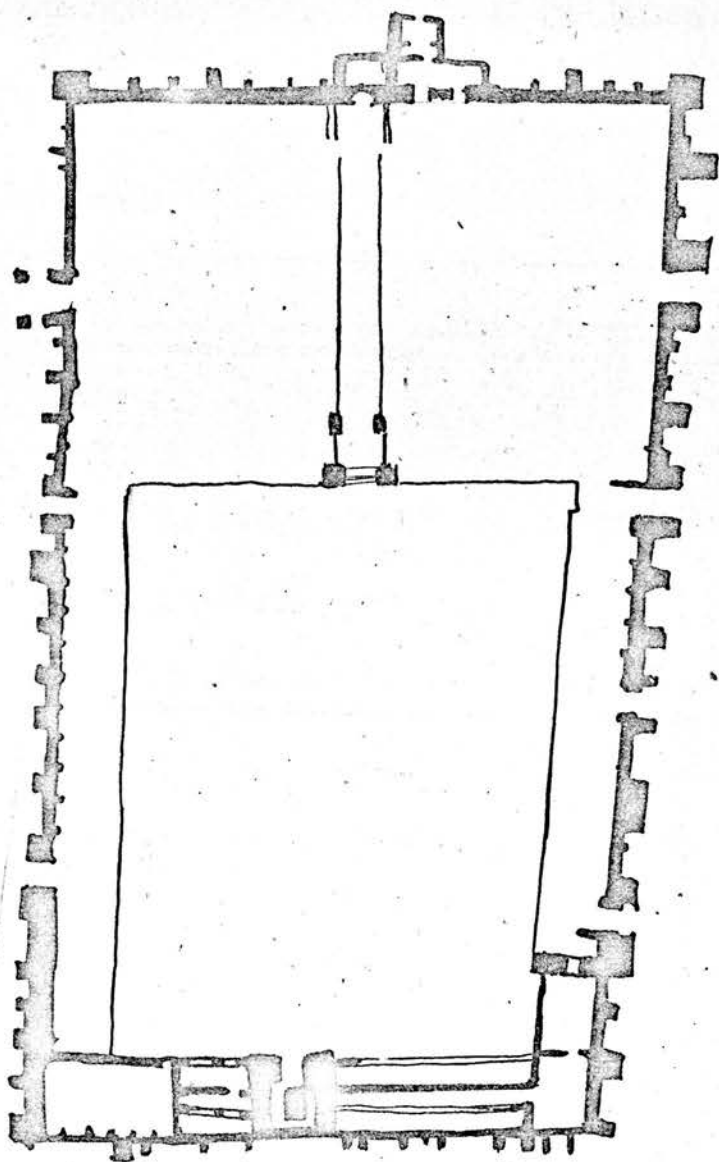


Fig. 71. Cordova: Great Mosque, plan

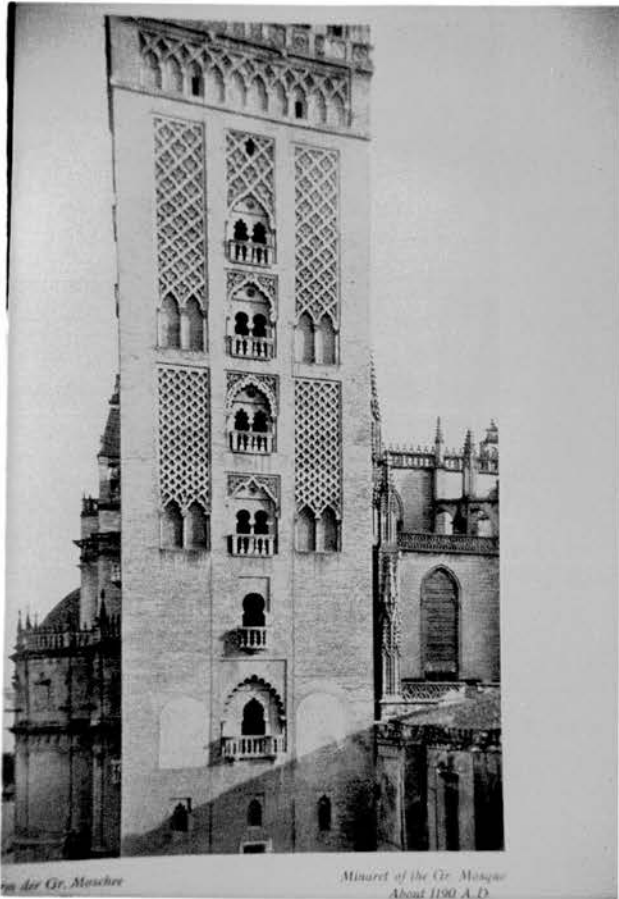


Fig.72. Seville: Giralda (c. 1190 A.D.)

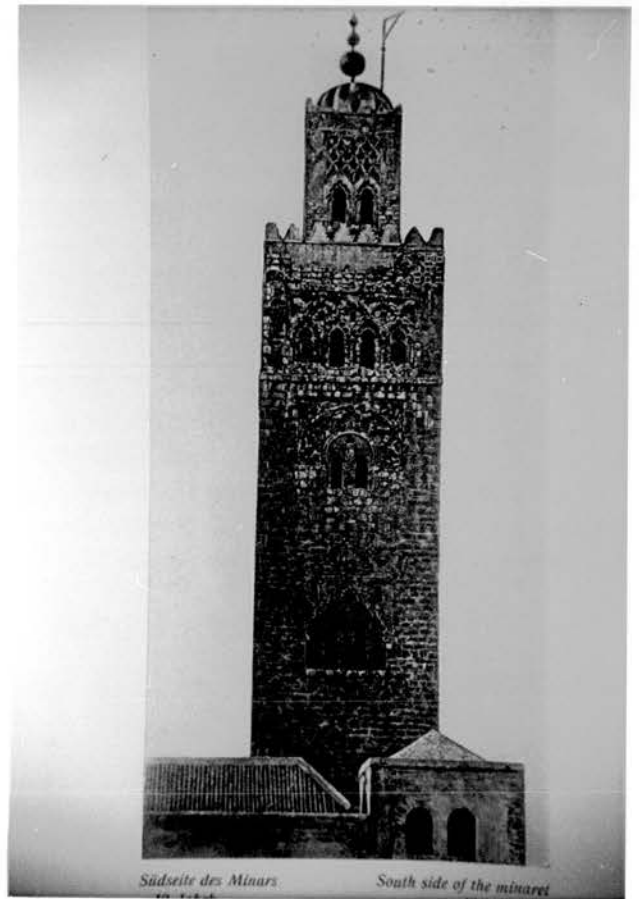


Fig.73. Marrākish: Minaret of al-Kutubiyah (12<sup>th</sup> cent. A.D.)

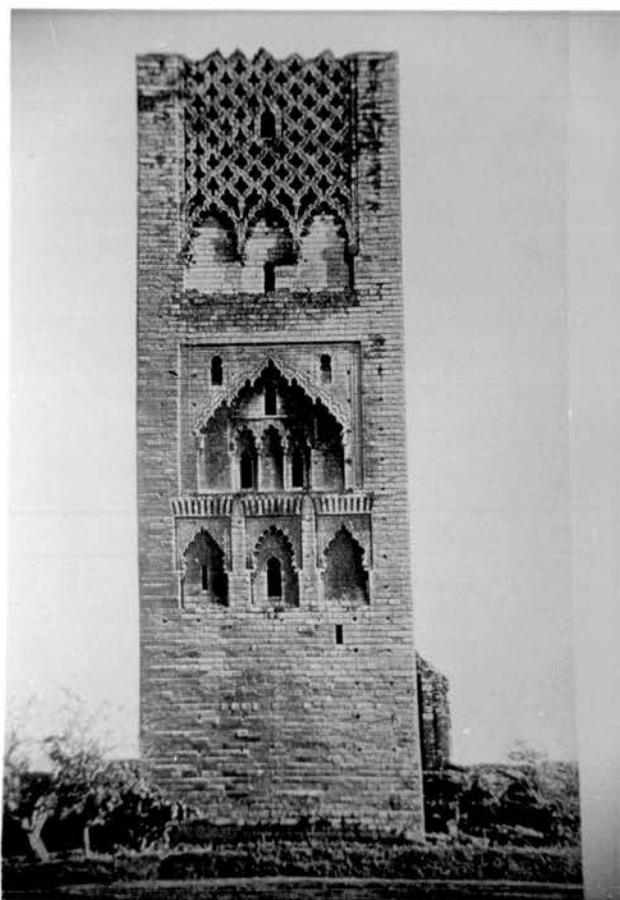


Fig.74.Rabāt: Minaret of Hassān  
(12<sup>th</sup> cent.A.D.)

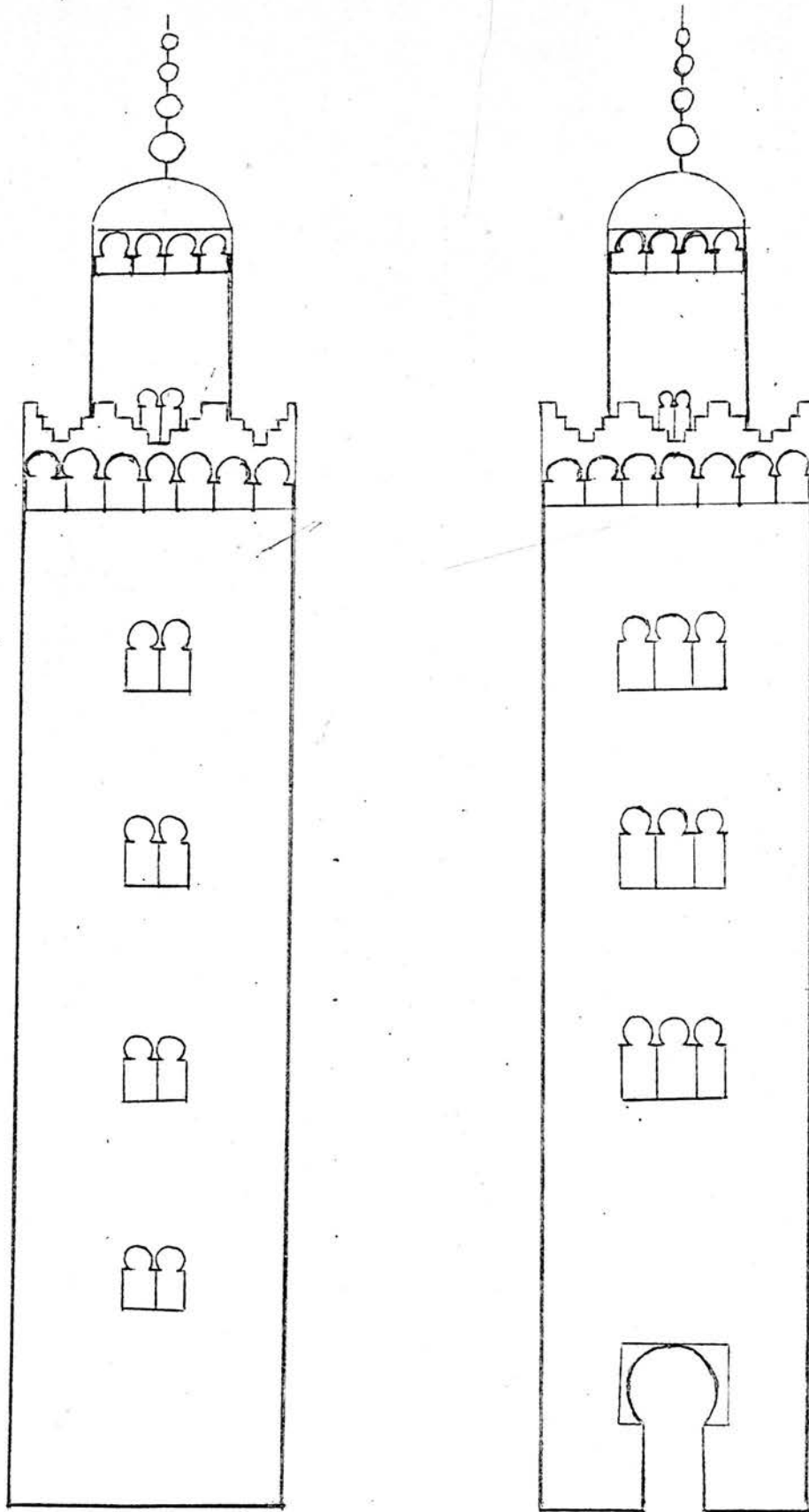


Fig. 75. Cordova: Great Mosque, minaret (951 A.D.) (reconstruction)



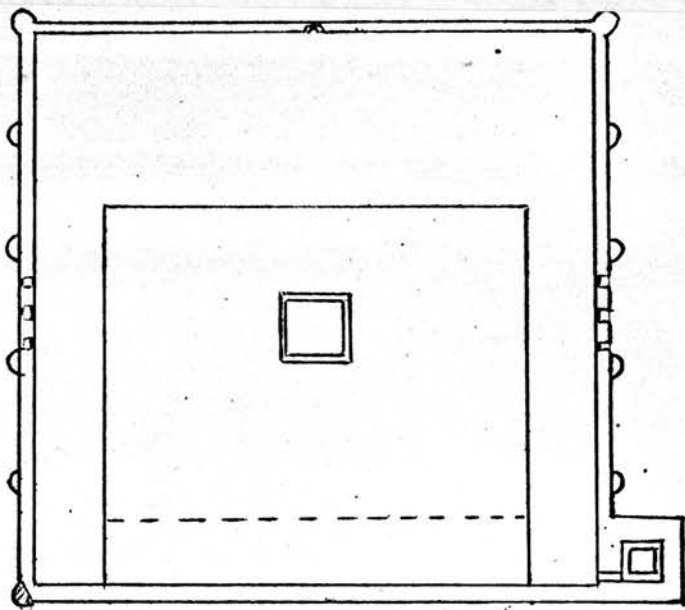


Fig. 77. Baghdad, Great Mosque of al-Mansur (766-808 A.D.)  
by (Herrfeld)



Fig.78.Samarra:Great Mosque,Malwiyah(848-51 A.D.),  
from the south



Fig.79.Samarra: Great Mosque  
Malwiyah,from the south-  
east

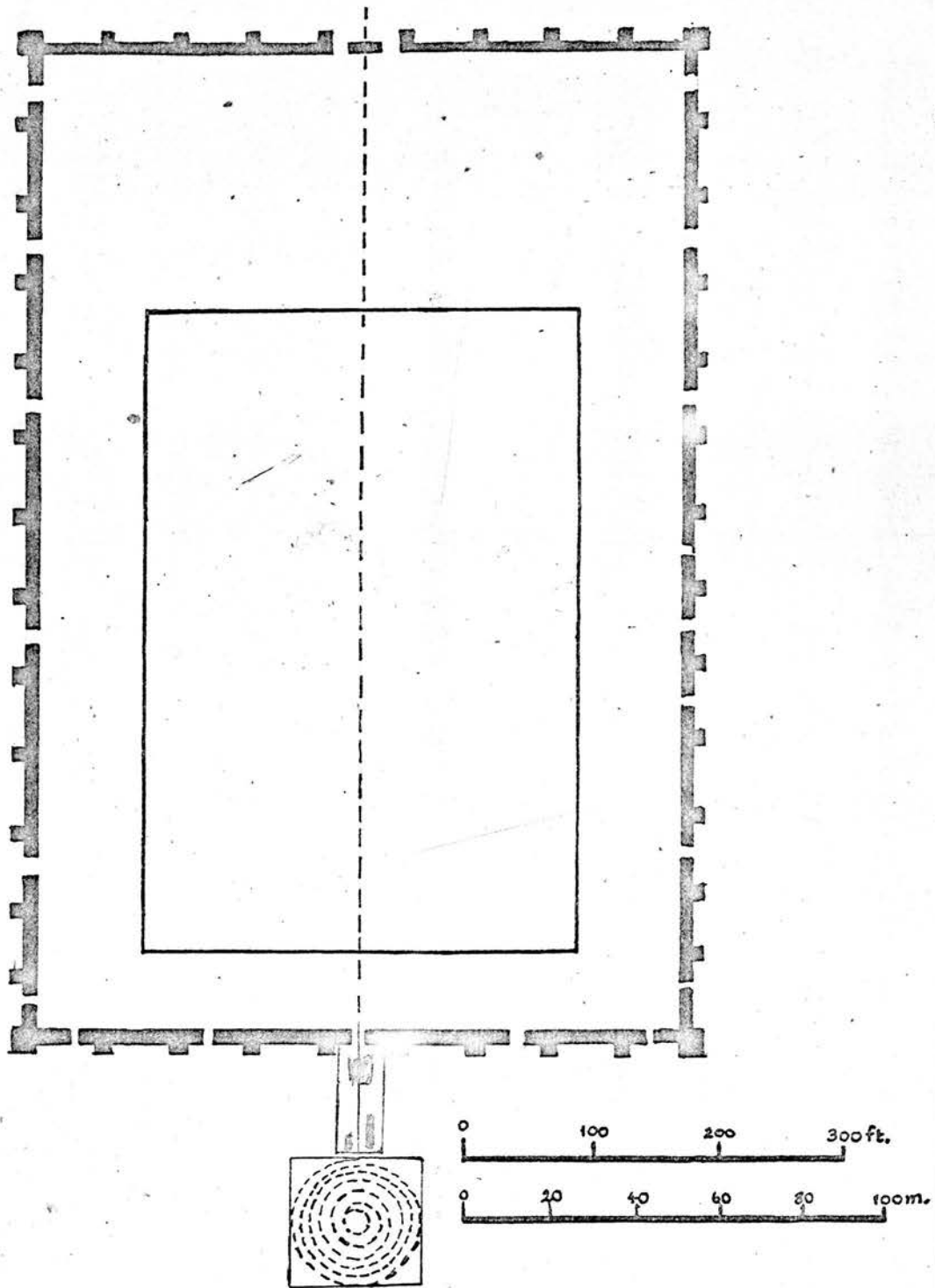


Fig. 80. *Sāmarrā*: The Great Mosque, plan. (by Creswell)



Fig.81.Samarra:Great Mosque,Malwiyah,east side  
of the socle

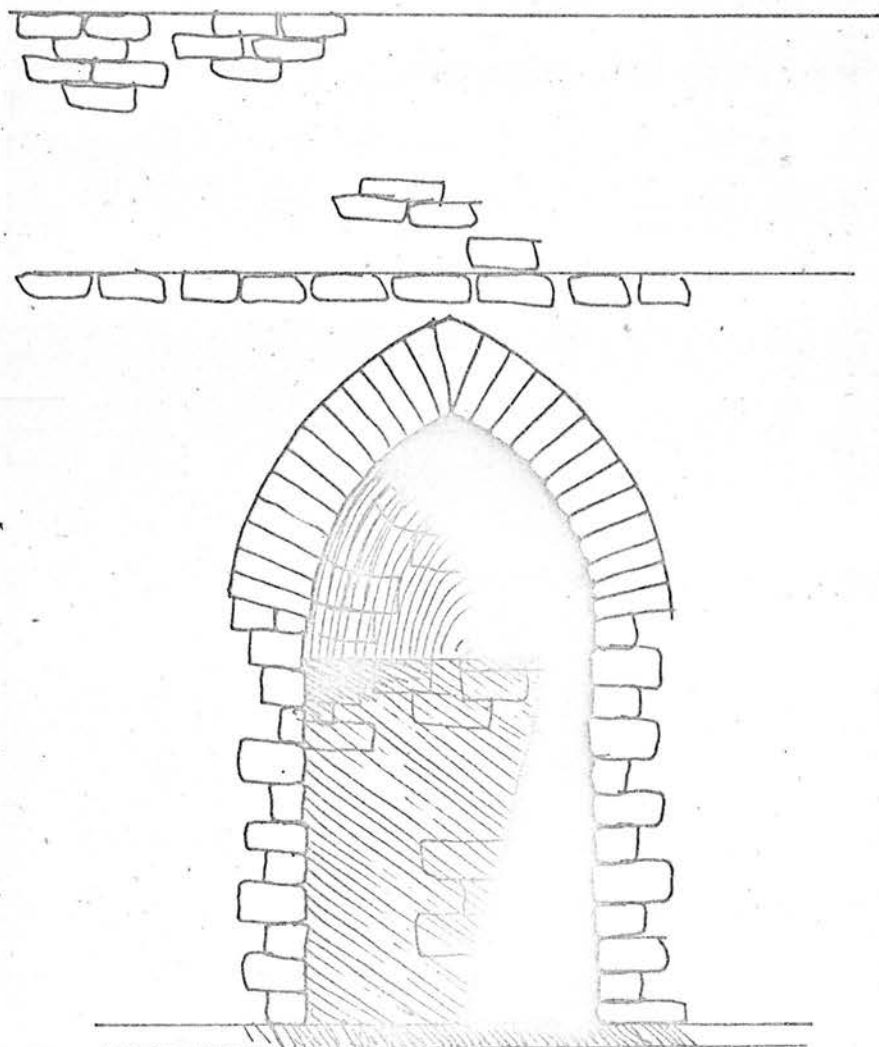


Fig. 82. Samarra; Alalwiyah, niche on the socle



Fig.83.Samarra:Great Mosque,Malwīyah,niche at  
the top

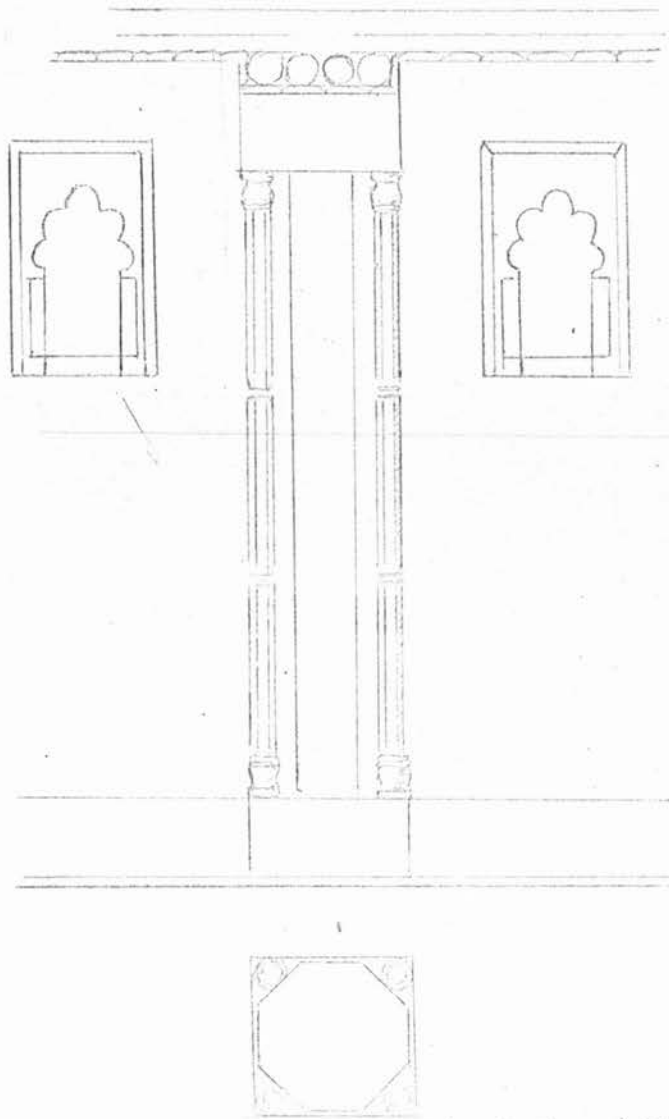


Fig. 84. Samarra, Great mosque, pier sketch (by Herzfeld)

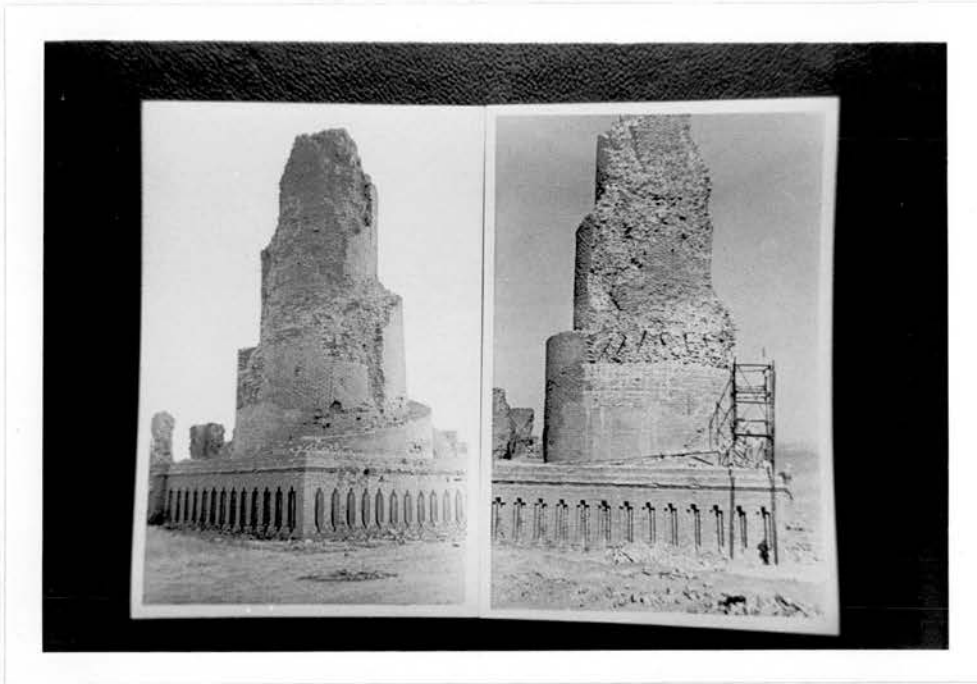
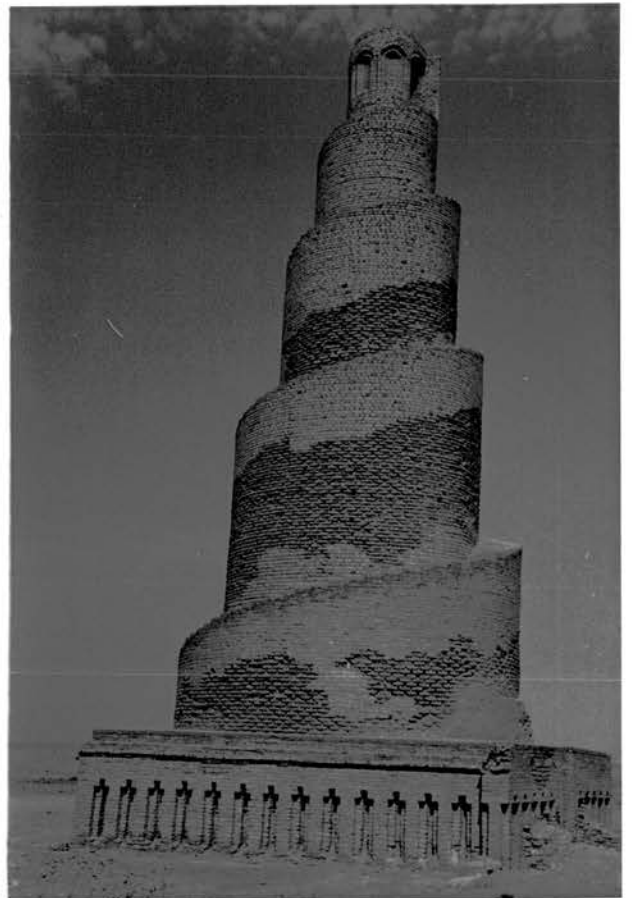


Fig.85.Samarra: Mosque of Abū Dulaf, minaret (before restoration)

Fig.86. Mosque of Abū Dulaf, minaret (after restoration)



60

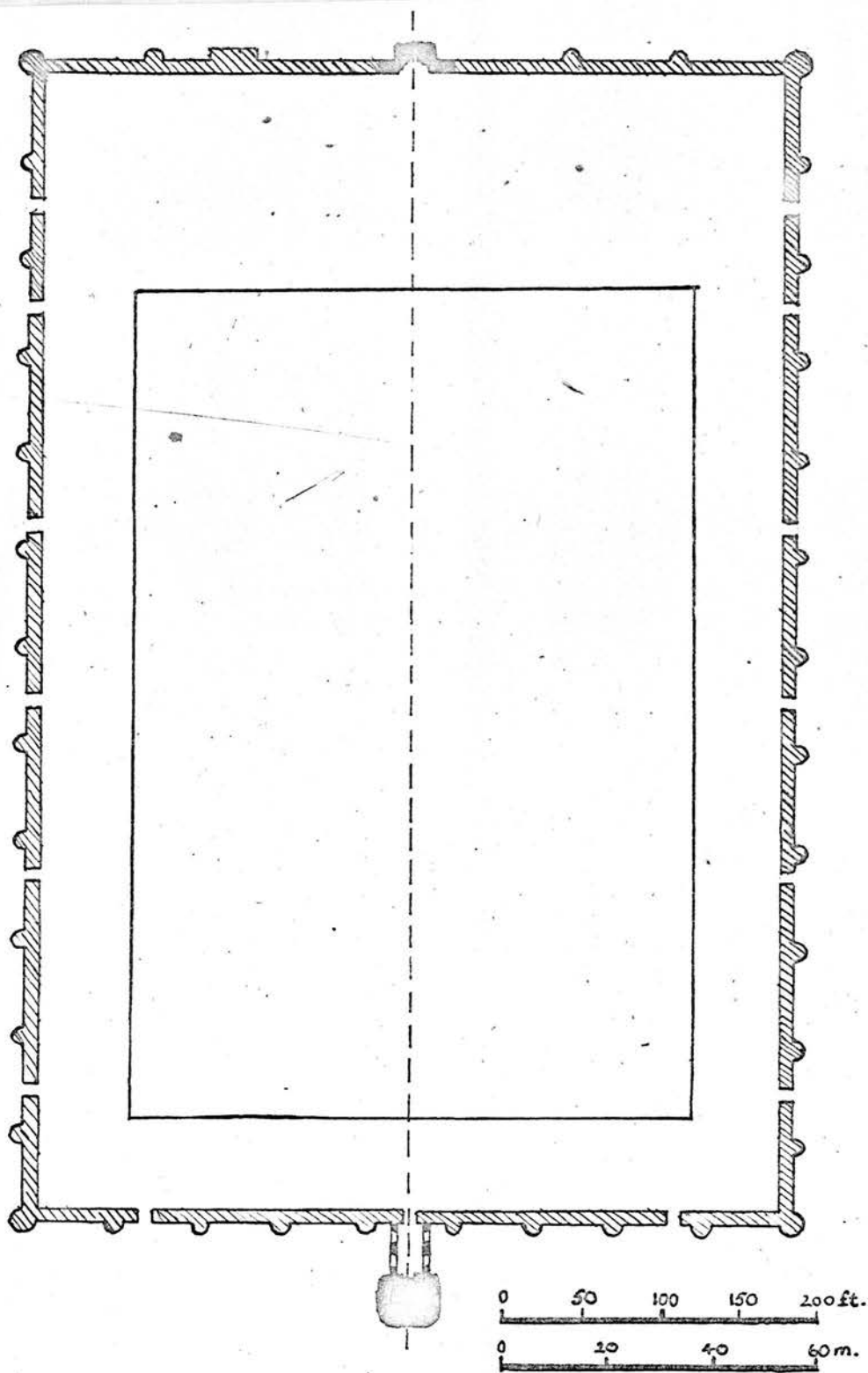


Fig. 87. Sāmarrā: Mosque of Abū Dulaf, plan. (Creswell)

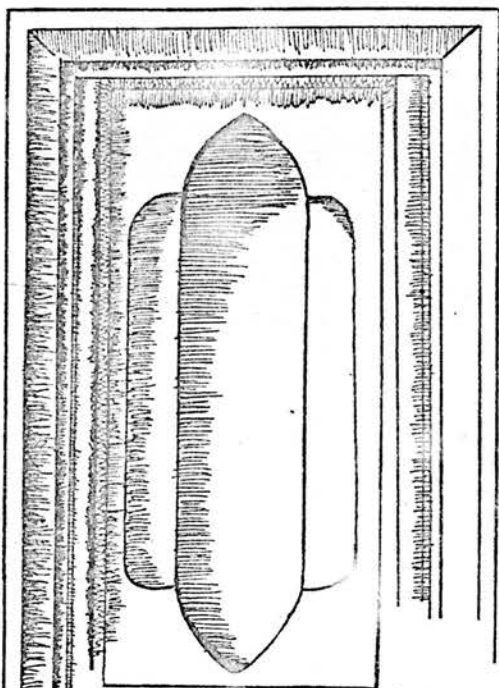


Fig. 88. Summary a. Mosque of Abū Dulaf, niche on a pier (Herzfeld)

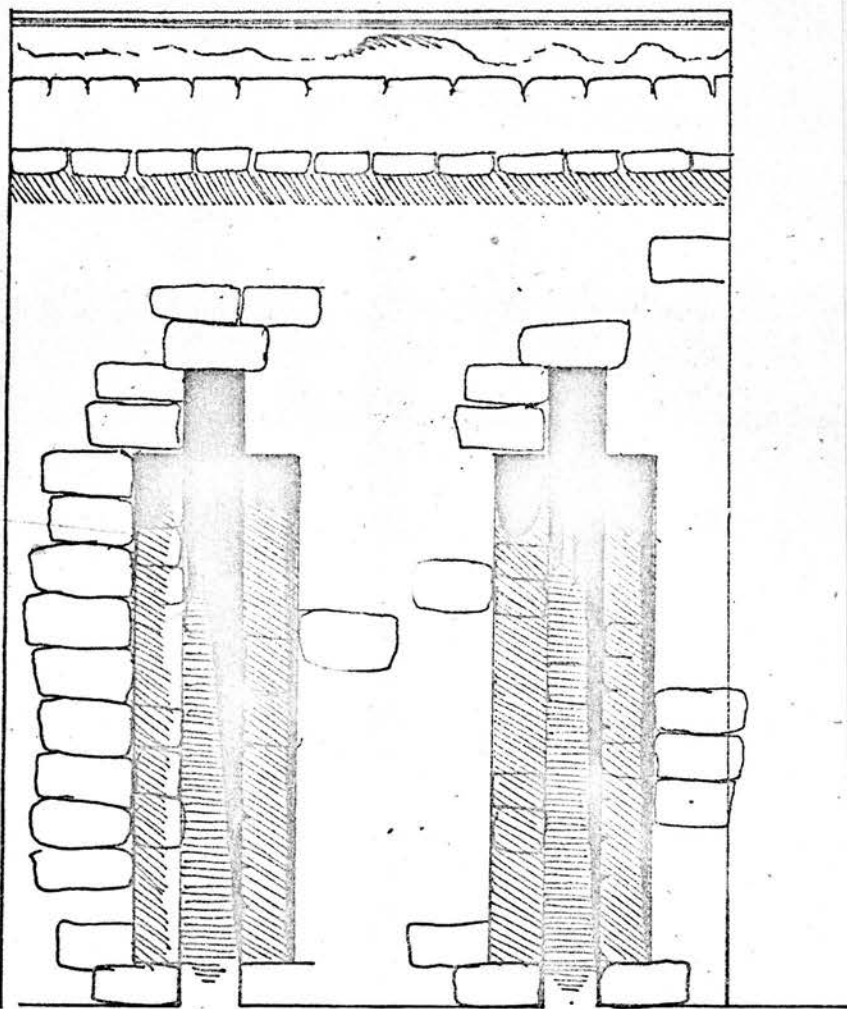


Fig. 89. Mosque of Abū Dulaf, minaret, niches on the socle.

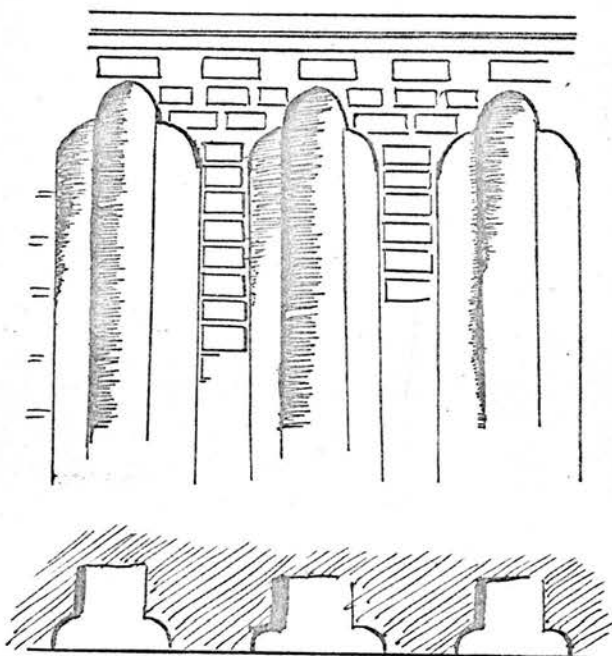


Fig. 90. Mosque of Abū Dulaf, minaret, niches on the socle

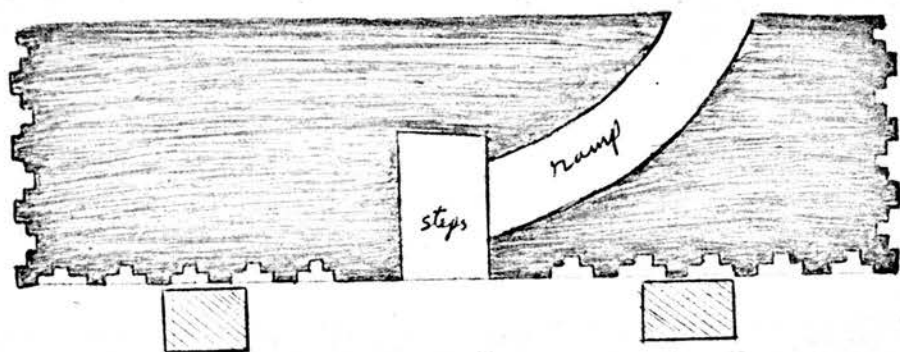


Fig. 91. Samarra: Mosque of Abū Dulaf, minaret, socle and entrance  
(by Creswell)

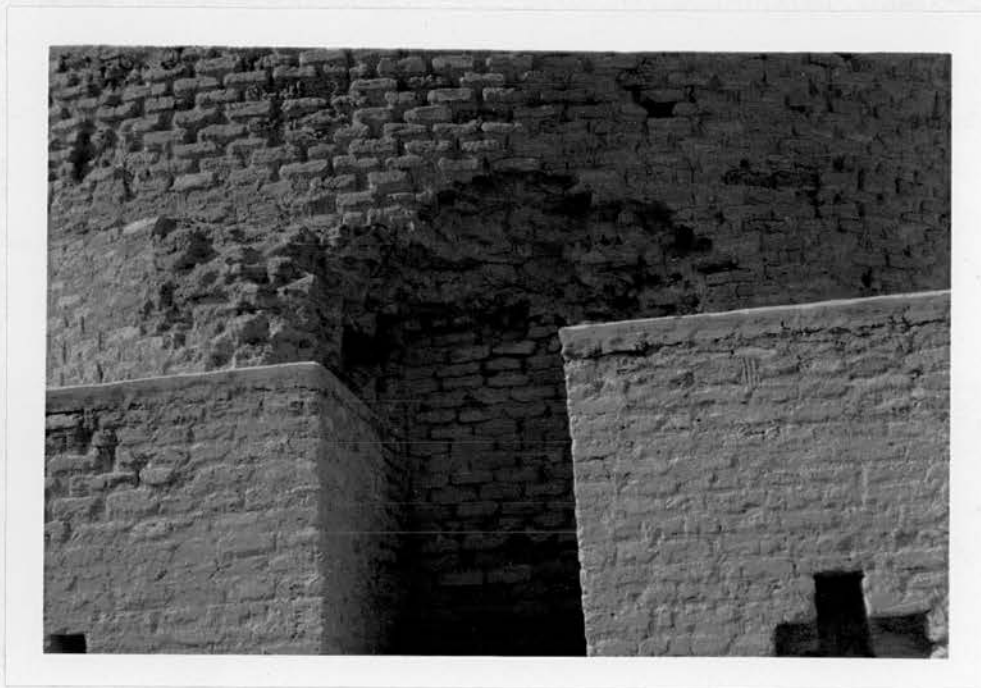


Fig.92.Samarra: Mosque of Abū Dulaf, minaret, entrance from the south

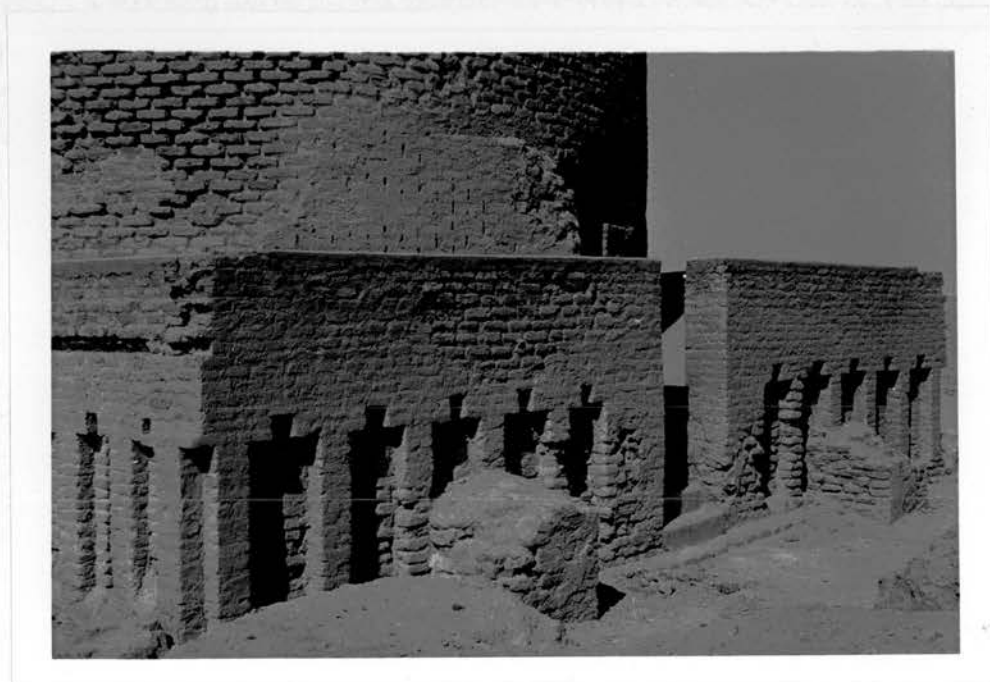


Fig.93. Mosque of Abū Dulaf, minaret, entrance from the south-west

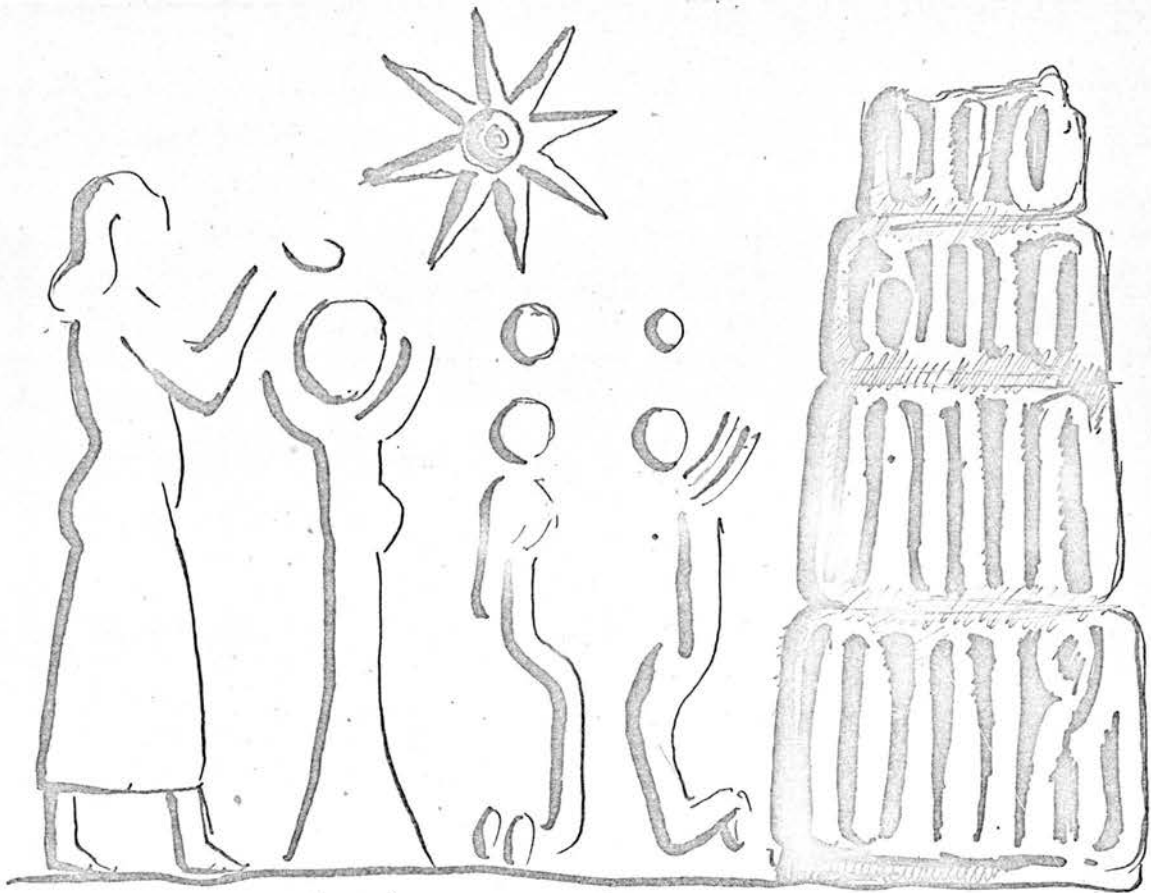
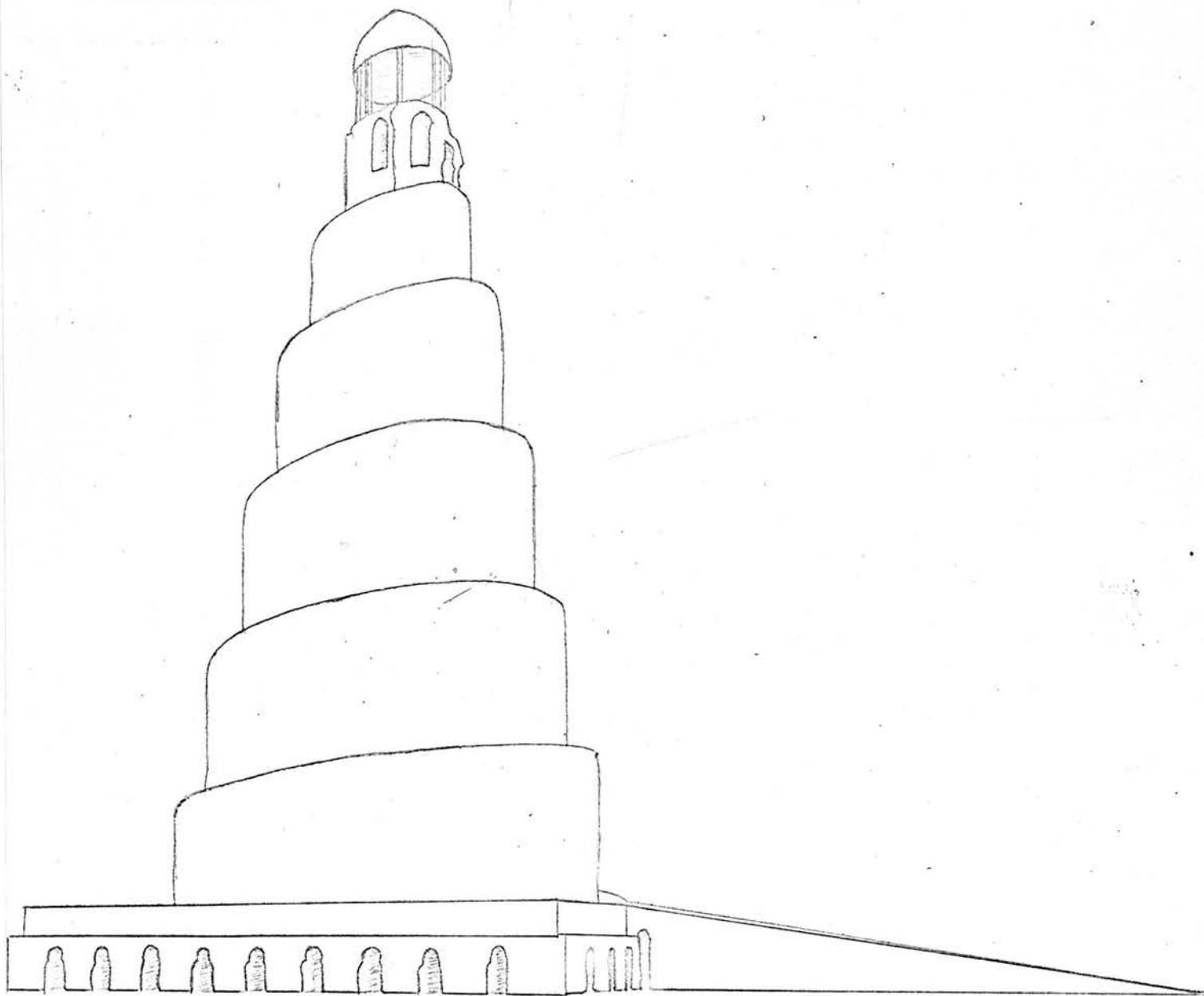


Fig. 94. A print of a cylindrical seal from Mesopotamia



Fig. 95. A print of a cylindrical seal from Mesopotamia (c. 1250 B.C.)



.96. The Malviya's with the ramp which has not been restored (by Creswell)

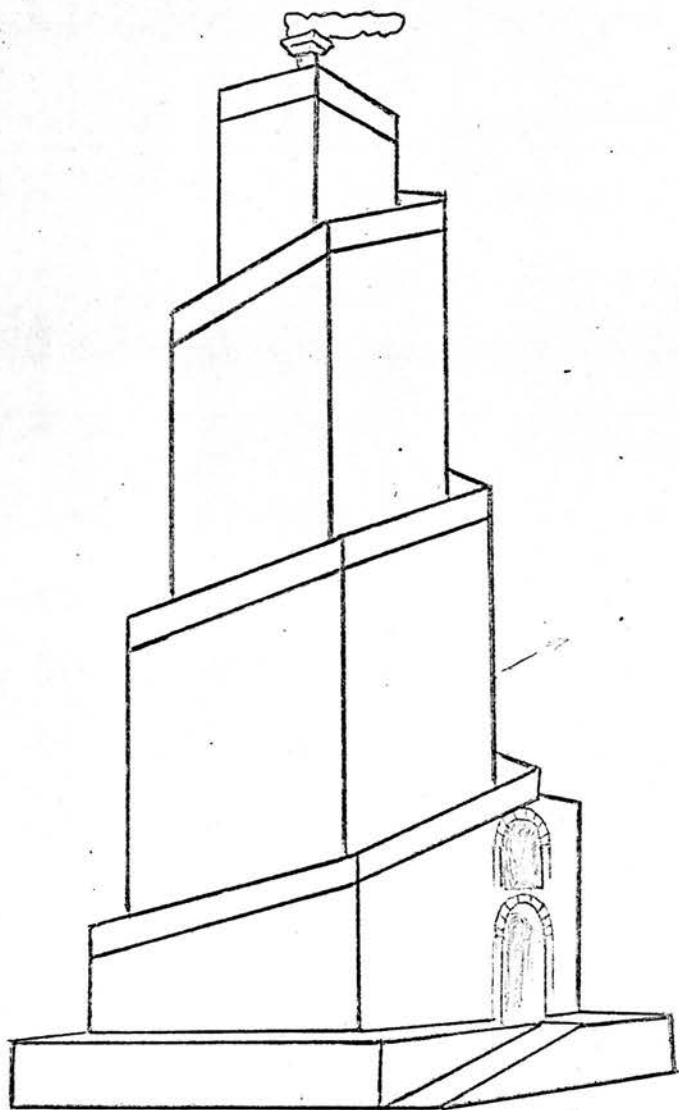


Fig. 97. Firuzābād: Tower of Giv (reconstruction)

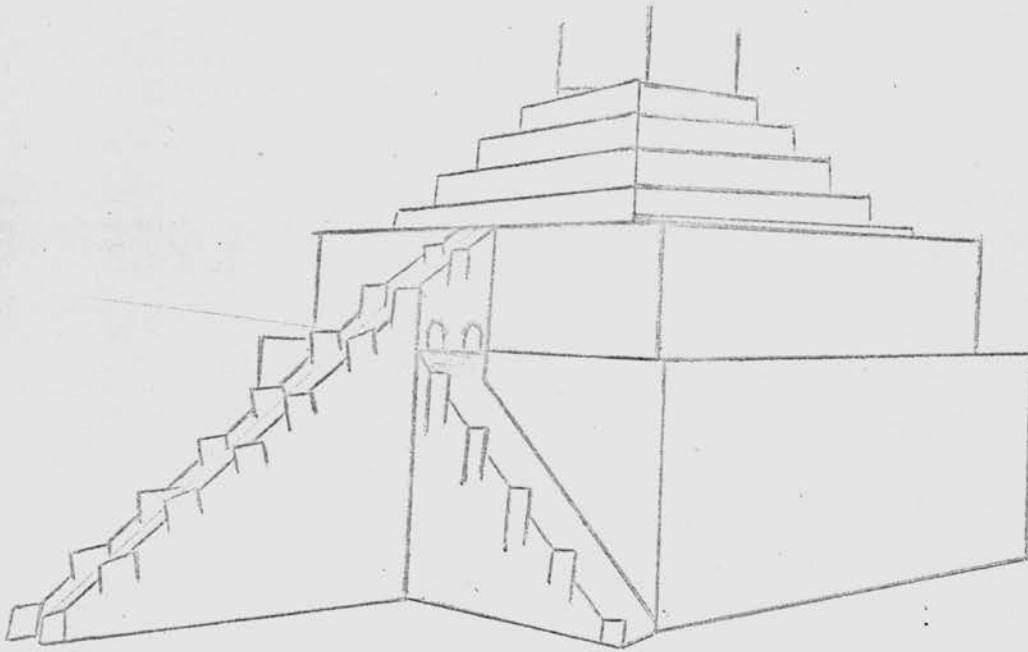


Fig. 98. Babylon: Tower of Babel (reconstruction, by Dombart-simplified)

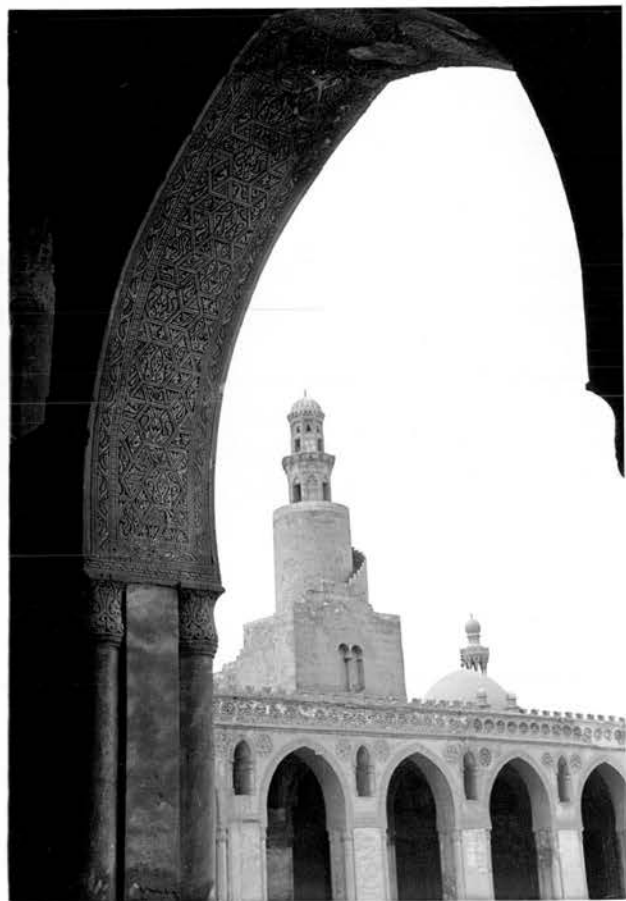


Fig.99.Cairo:Ibn Ṭulūn's Mosque,  
minaret from the south-west



Fig.100.Cairo:Ibn Ṭulūn's Mosque,  
minaret from the west

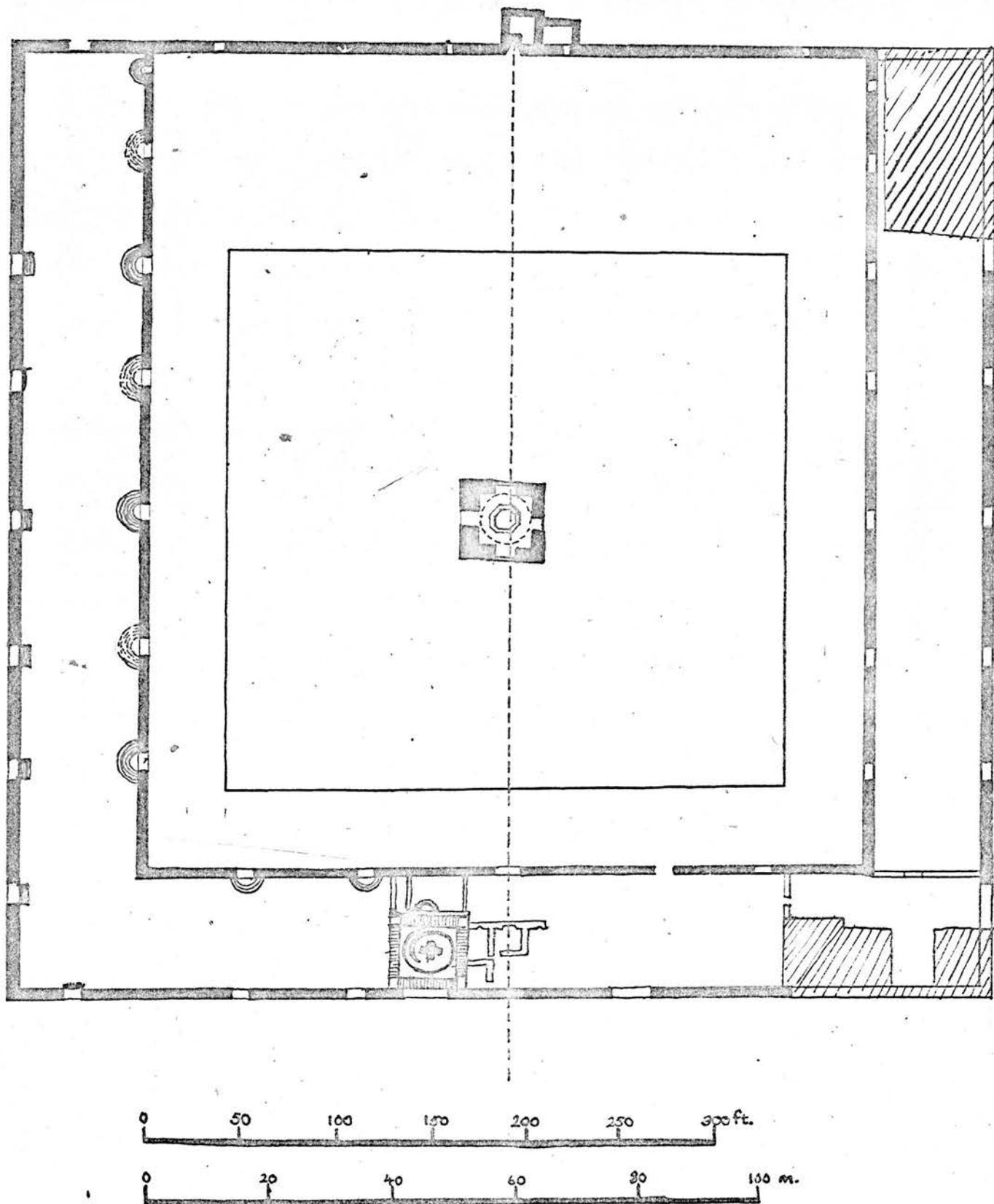


Fig:101. Cairo: The Mosque of Ibn Tulun, plan. (by Creswell)



Fig. 102. Ibn Tulun's minaret, ground entrance.

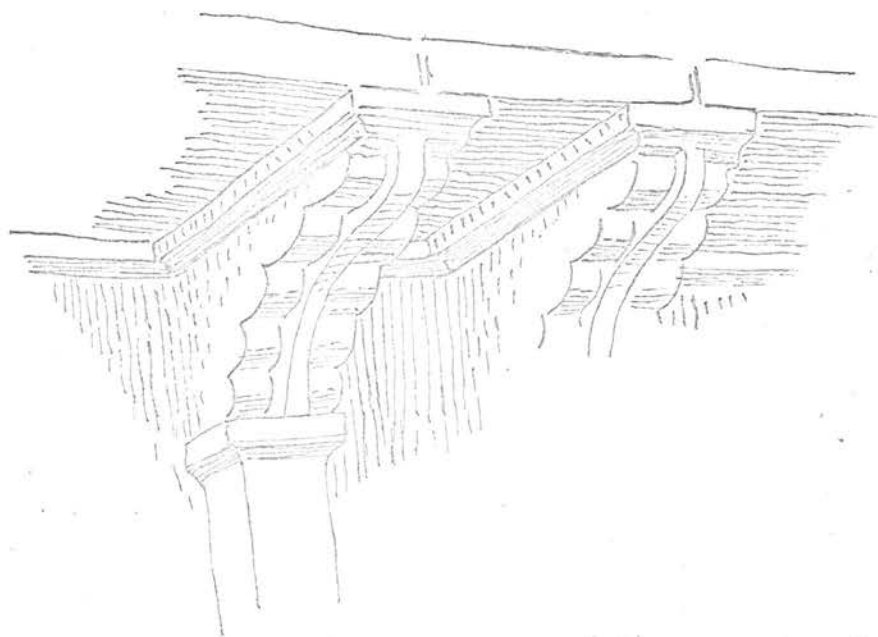


Fig. 103. Ibn Tulun's minaret, mechanisms à copaux

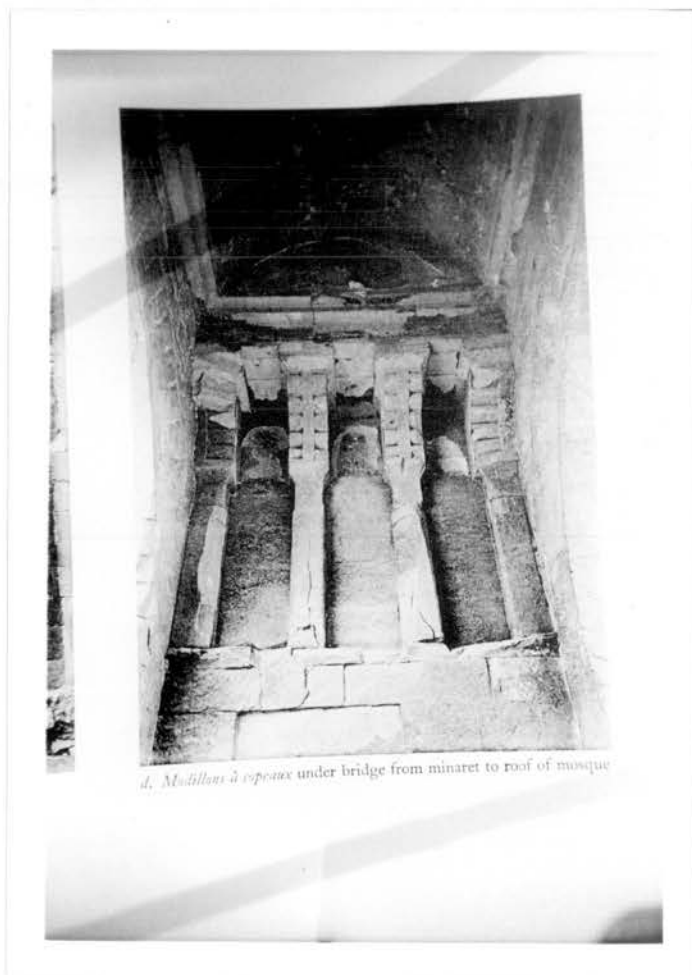


Fig.104.Cairo:Ibn Ṭūlūn's Mosque,minaret,  
modillons à copeaux under bridge

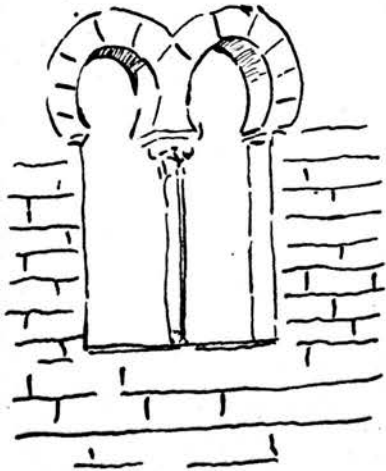


Fig. 105. Ibn Tulun's minaret

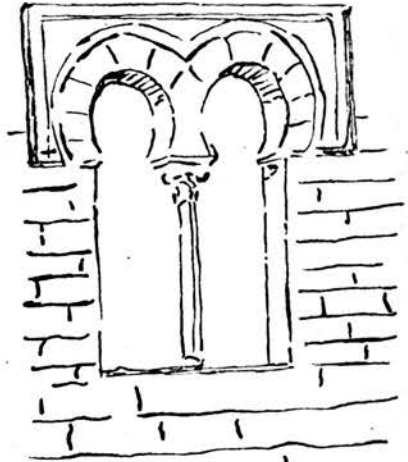


Fig. 106. Ibn Tulun's minaret

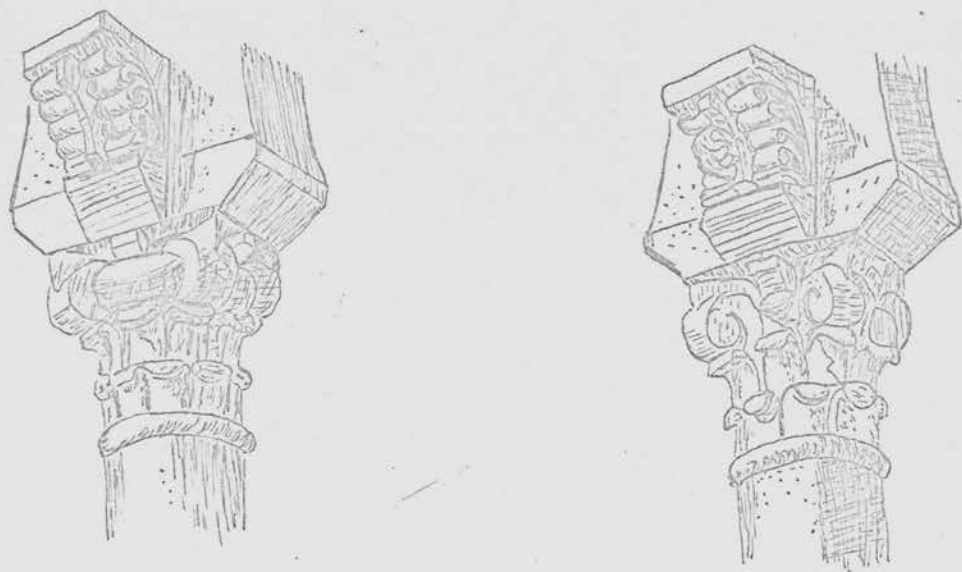


Fig. 107. Cordoba: Great Mosque, modillons à copeaux (958 A.D.)

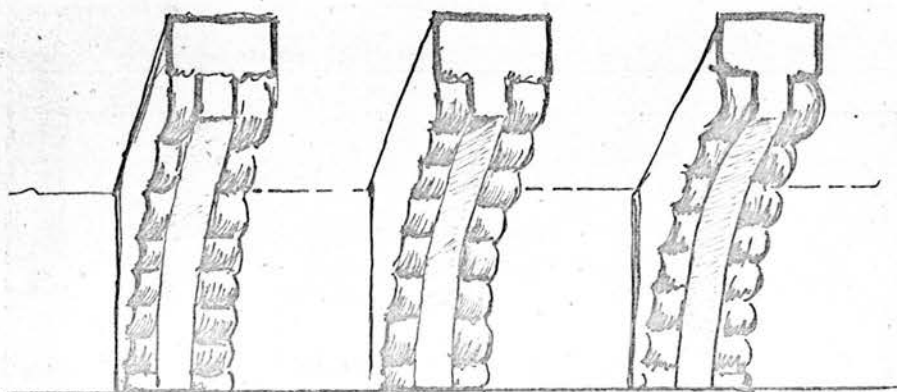


Fig. 108. Cordova: Great Mosque, modillions à copeaux  
(958 A.D.)

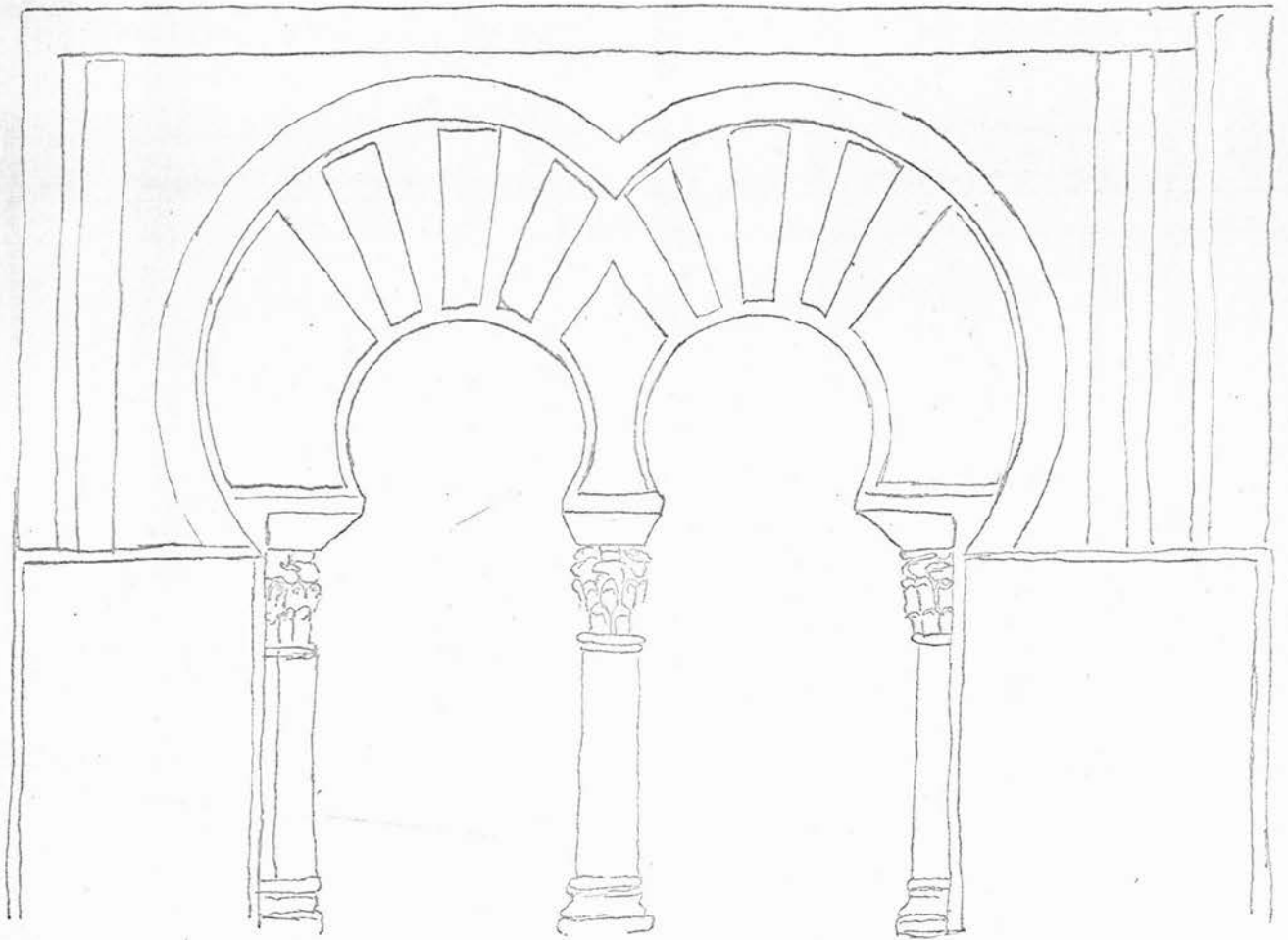


Fig. 109. Cordova, Great Mosque, coupled ornamental horse-shoe arch.

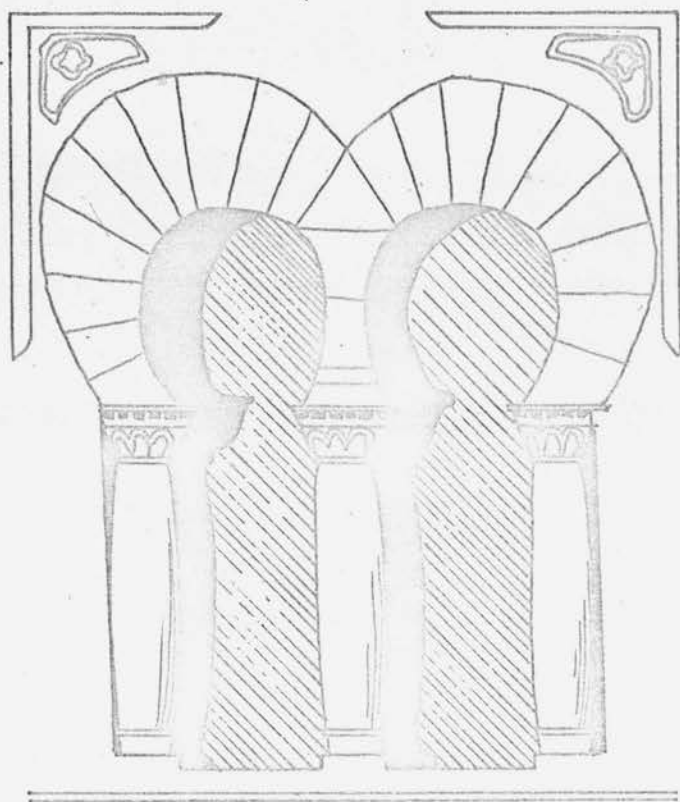


Fig. 110. Cordova, Great Mosque, complex ornamented  
horseshoe arch

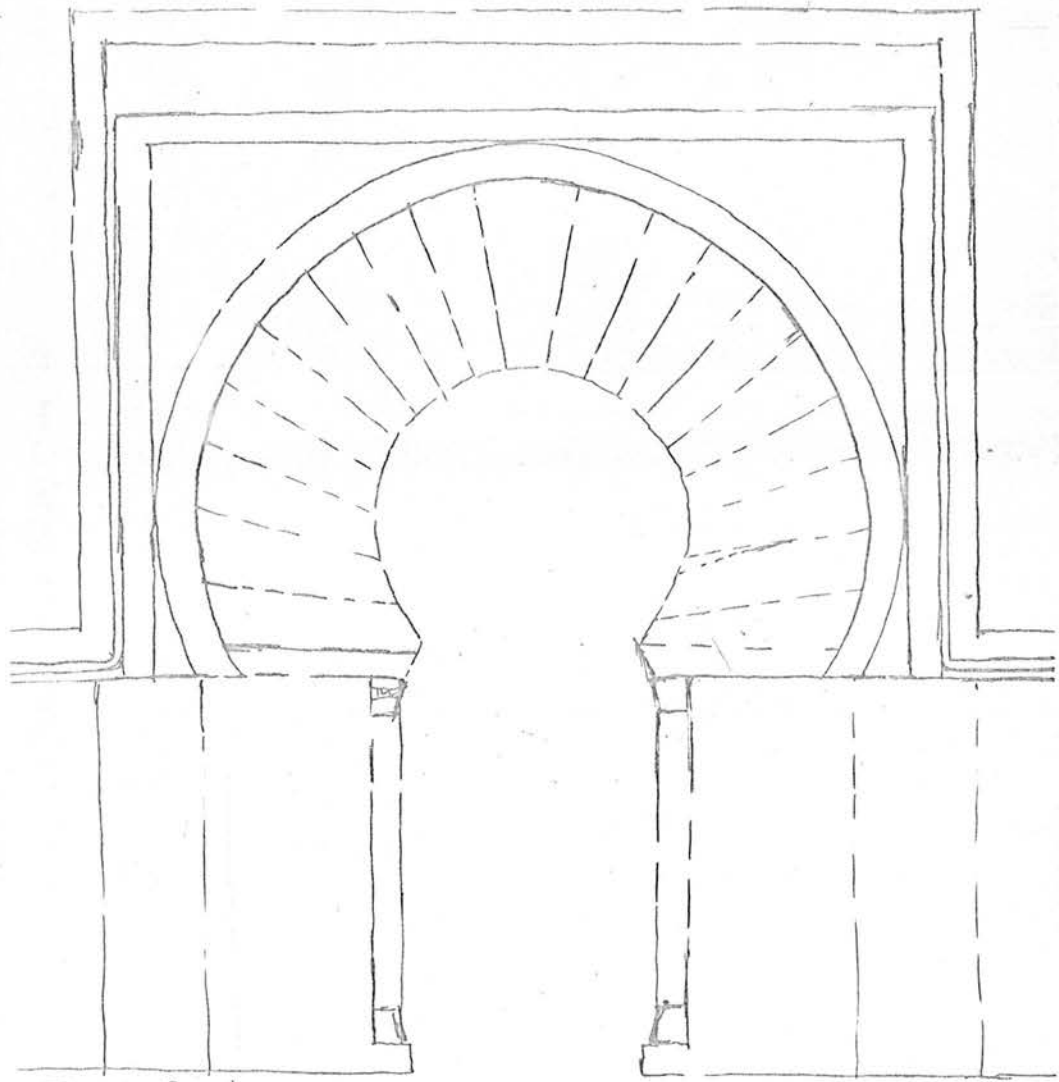


Fig. III. Cordova: Great Mosque, horse-shoe arched mihrab.

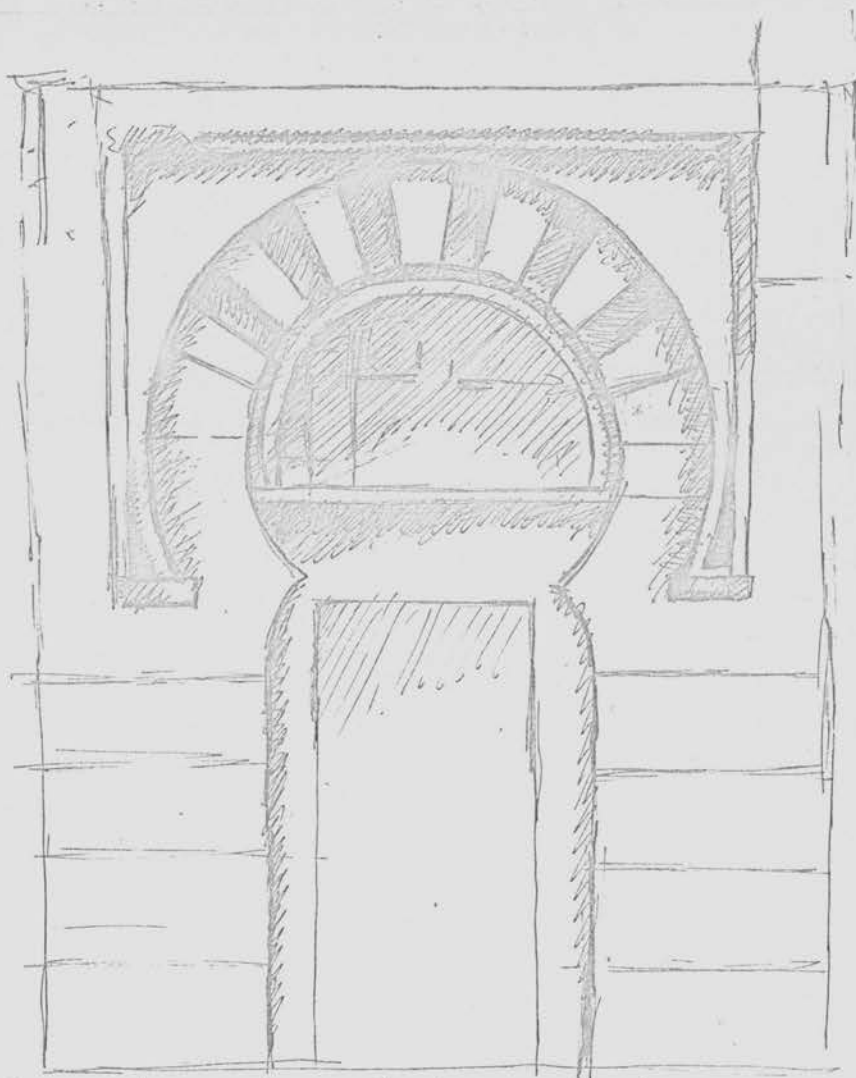


Fig. 112. Cordoba: Great Mosque, Peninsula de San Estaban (855/6)

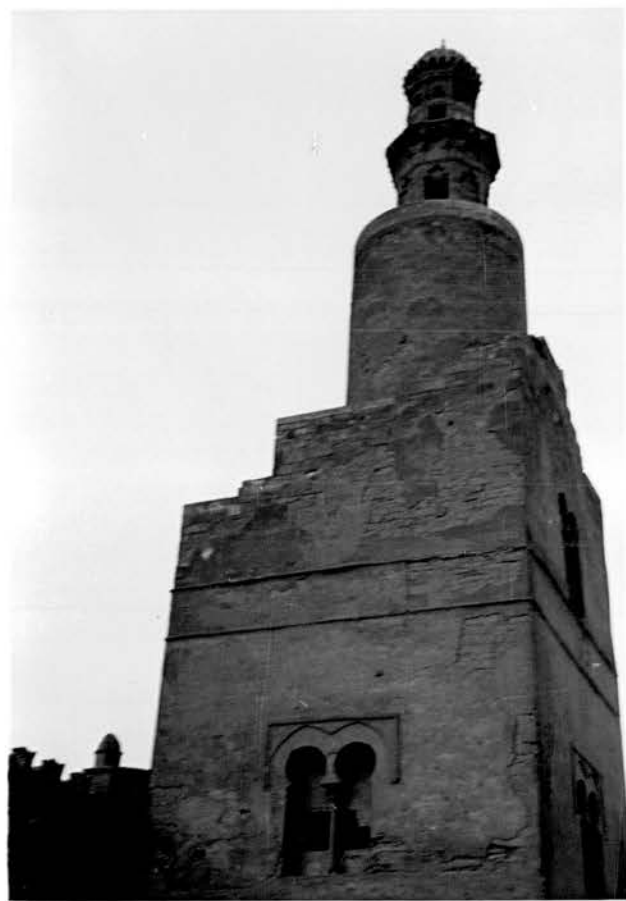


Fig.113.Cairo:Ibn Ṭulūn's Mosque,  
minaret,west coupled horse-  
shoe arch



Fig. 69. — Cette porte de la façade orientale, construite sous le règne d'Ischam ibn Ahmad et s'ouvrant sur la galerie, témoigne de la survivance de l'esprit décoratif du VIII<sup>e</sup> siècle. Les effets de décor et de lumière s'obtiennent par la simplicité et la netteté des lignes.

Fig.114.Qayrawan:Mosque of Sidi  
Uqbah,horse-shoe arched  
entrance(8<sup>th</sup>cent.A.D.)

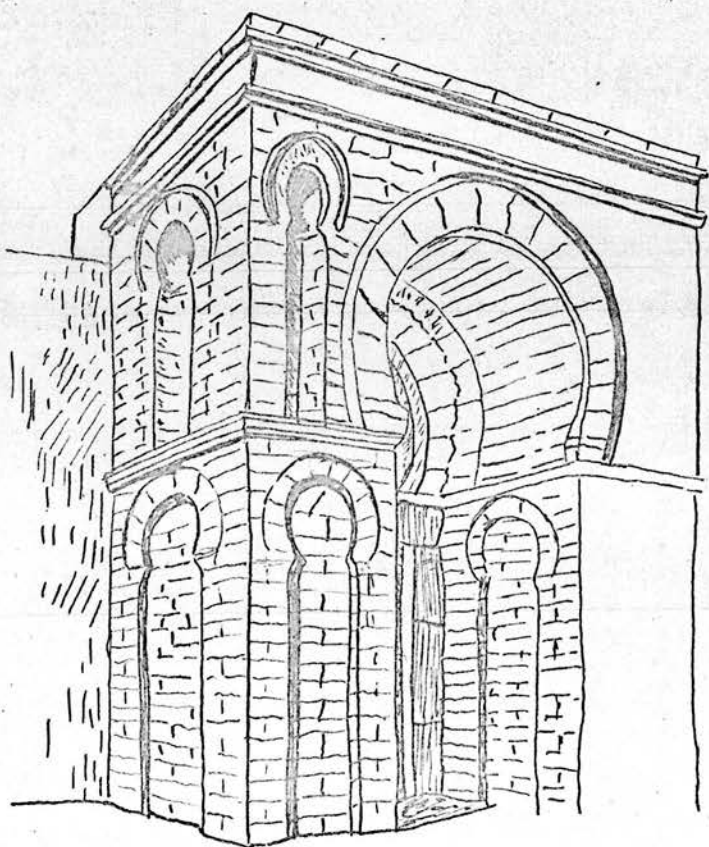


Fig. 115. Mahdiyyah: Great Mosque, entrance

SOURCES OF ILLUSTRATIONS

- Brünnow, R.E. and Domaszewski, A.V. Die Porvincia Arabia  
1904-9.
- Butler, H.C. Architecture and other arts, 1903.  
-----  
Ancient architecture in Syria, 1907-15.
- Creswell, K.A.C. Early Muslim architecture, 2 vols.  
1932-40.  
-----  
Muslim architecture of Egypt 2 vols 1952-59.  
-----  
A short account of early Muslim architecture, 1958.
- De Vogüé, C.J.M. Syrie centrale, 1865-77.
- Dieulafoy, M. L'art antique de la Perse 1884-89.
- Dombart, Th. "Der babylonische Turm" Alt.O., XXIX/2(1930)
- Fikry, A. La grande mosquée de Kairouan 1934.
- Grollenberg, L.H. Atlas of the Bible tr. J.M.H. Reid  
H.H. Rowley Nelson 1957.
- Hottinger, A., The Arabs, their history, culture, and  
place in the modern world London, 1963.
- Kennedy, Sir. A.B.W. Petra 1925.
- Kühnel, E. Maurische Kunst 1924.
- Marçais, G. Manuel d'art musulman 1926-1927  
-----  
Mélanges d'histoire et d'archéologie de  
l'occident musulman Alger 1957.
- Pope, A.U. ed., A survey of Persian art from pre-historic  
times to the present 6 vols., 1938-39. Index volume.  
comp. by T. Besterman, 1958.
- Sarre (F.) and Herzfeld (E.) Archäologische Reise 1911-1920  
Syria
- Thiersch, H. Pharos 1909
- Wiegand, T. ed., Palmyra 1932.