

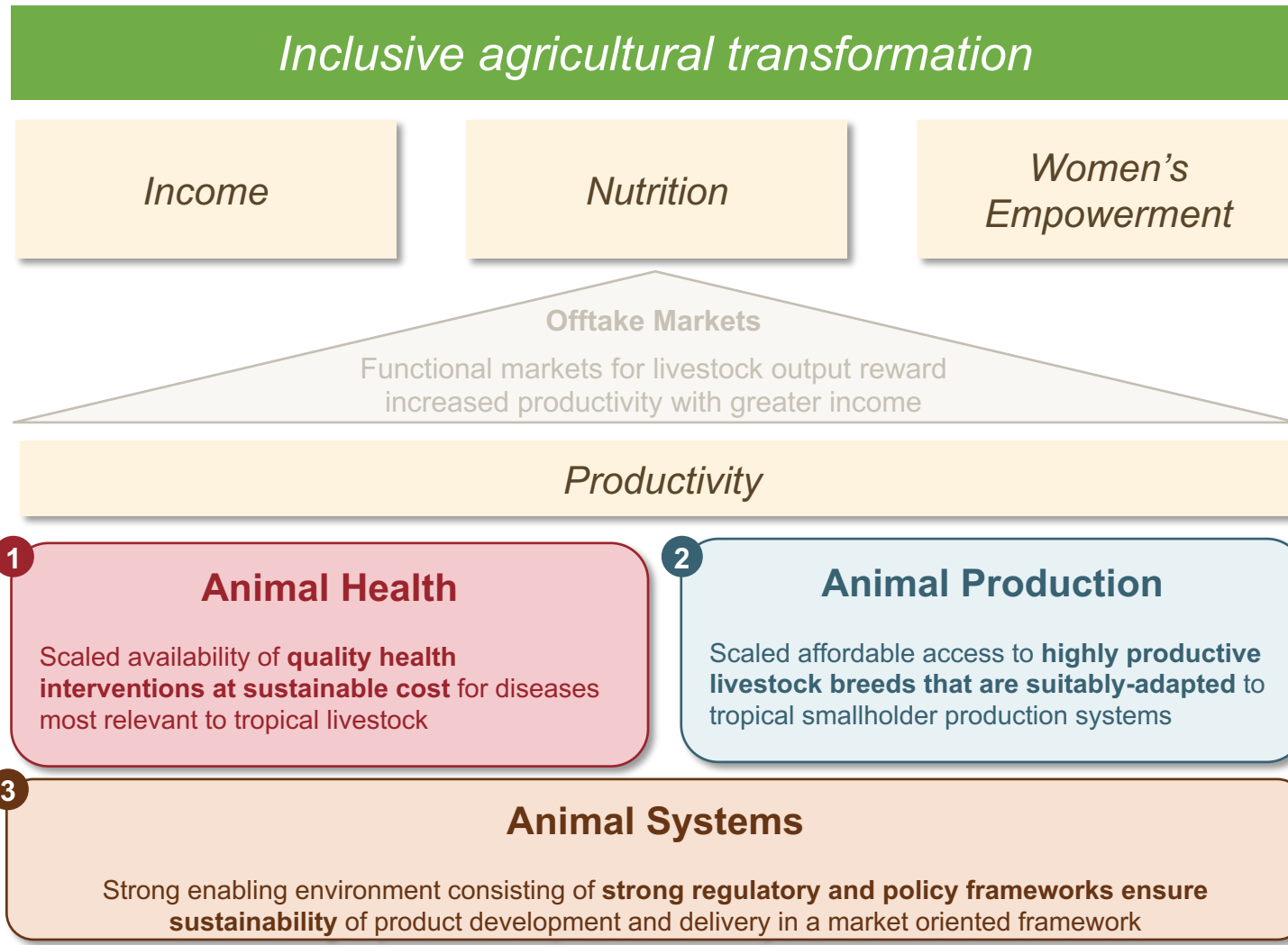
PORTFOLIO LEVEL: MEASURING IMPACT OF INVESTMENTS

LD4D session 5: What Impact Language do you Speak?

Belinda Richardson

*February 6, 2020
Rome, Italy*

PORTFOLIO THEORY OF ACTION & UNDERLYING KEY HYPOTHESES



1 Animal Health

- **Product Development**
- **Delivery**
- **Enabling Environment**

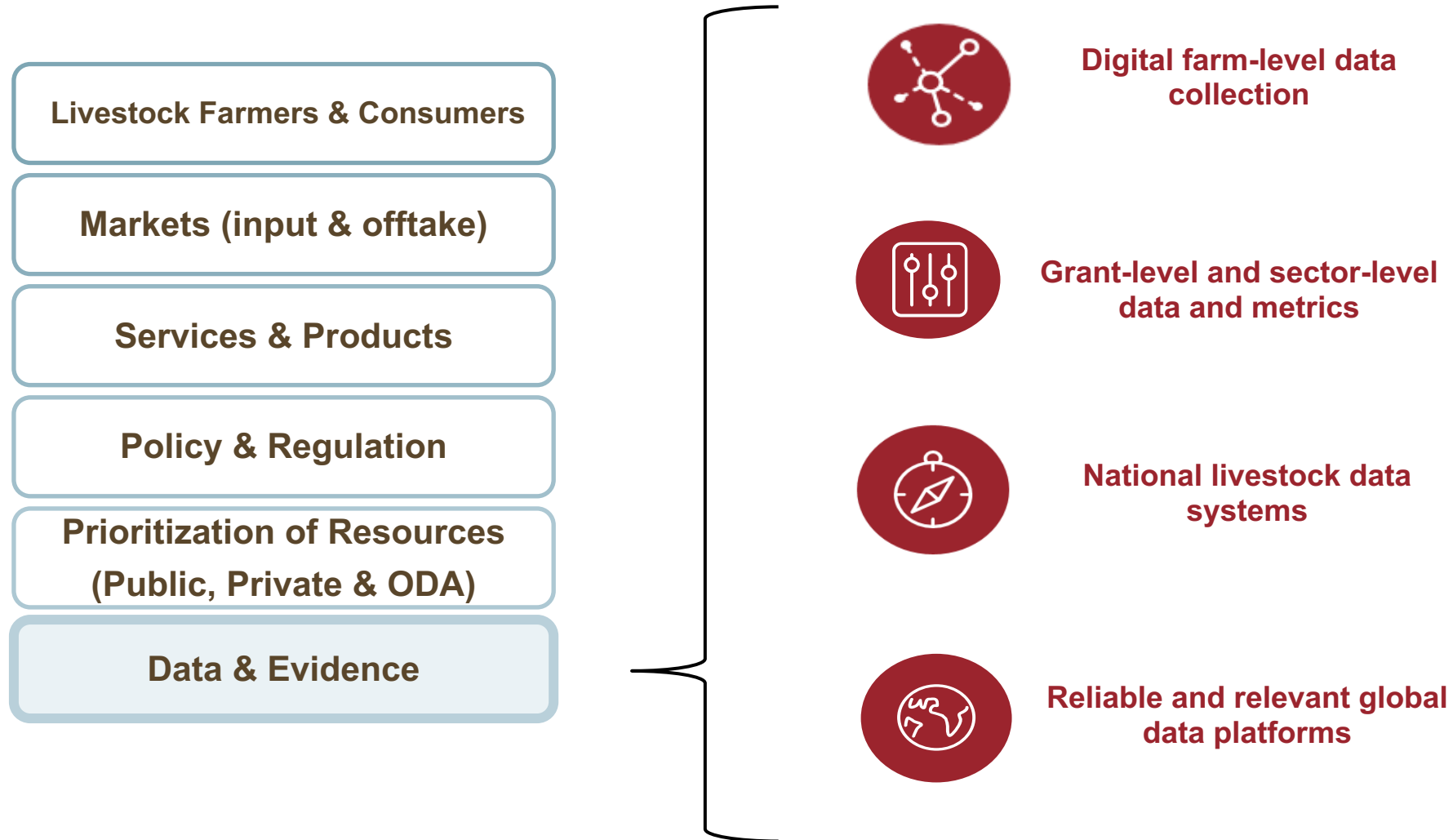
2 Animal Production

- **Discovery**
- **Genetic Gain**
- **Multiplication**
- **Dairy Processing**

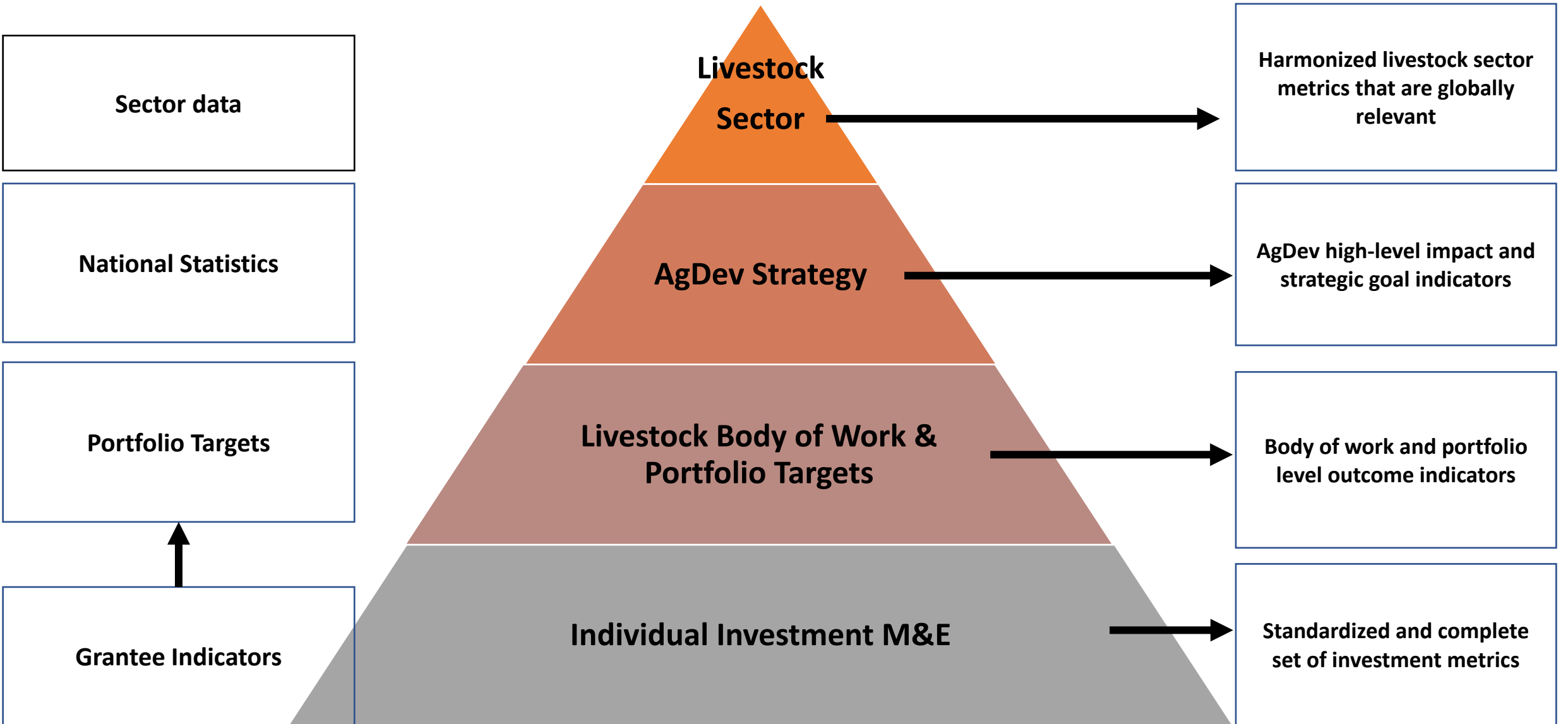
3 Animal Systems

- **Policy & Advocacy**
- **Data & Evidence**
- **Enabling Environment**

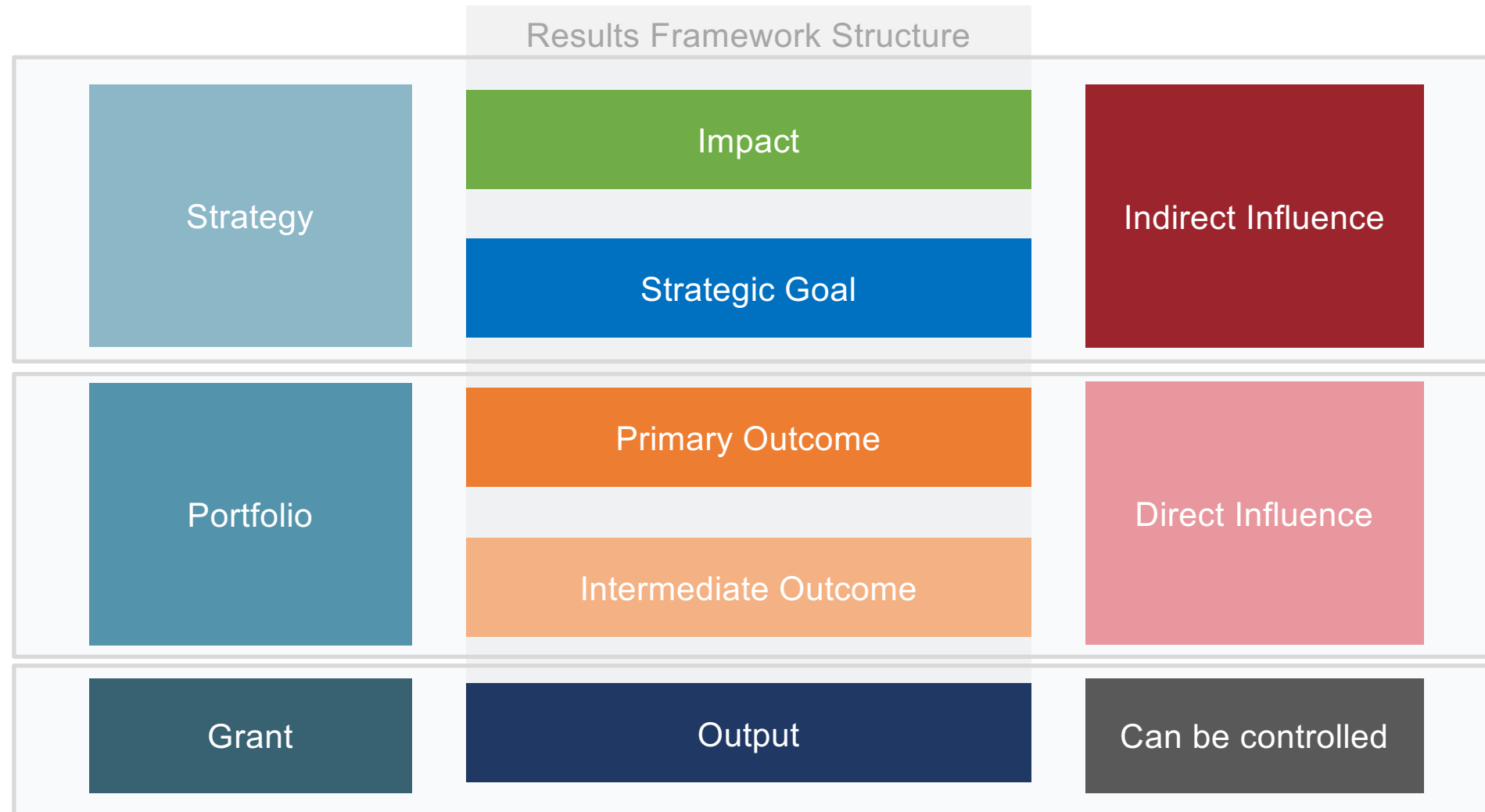
DATA UNDERPIN A FULLY FUNCTIONING LIVESTOCK SYSTEM



BMGF Livestock team M&E vision



ORGANIZING FOR IMPACT



AGDEV RESULTS FRAMEWORK

Tool to monitor performance, track results and align portfolio programs

Impact Goal

Inclusive agricultural transformation that increases rural incomes, empowers women, better nourishes families, and spurs economic growth

Strategic Goal

Increase agricultural productivity for SHFs	Increase SHF household income	Increase equitable consumption of a safe, affordable, nutritious diet year-round	Increase women's empowerment in agriculture
---	-------------------------------	--	---

Primary Outcome

Farmer Impact	Increase use of cost-effective improved products, services, and practices by SHFs	Increase SH farm value	Reduce impact of agricultural volatility for SHFs	Improve access to nutrient-rich foods	Increase women's control over resources
Country Systems		Increase quality, efficiency, and reach of government and private sector services	Improve national and state-level resource allocation and policies	Increase quality, availability, and utility of data and evidence	
Global Public Goods		Establish products and technologies for smallholder farmers	Establish new high-quality, cost-effective farmer service delivery models	Strengthen global policy, planning, accountability and resource environment	

IMPACT PATHWAYS OF EACH BOW (NOTE: WILL MAP OUR GENDER AND NUTRITION PATHWAY)



Figure 1. AgDev Results Framework

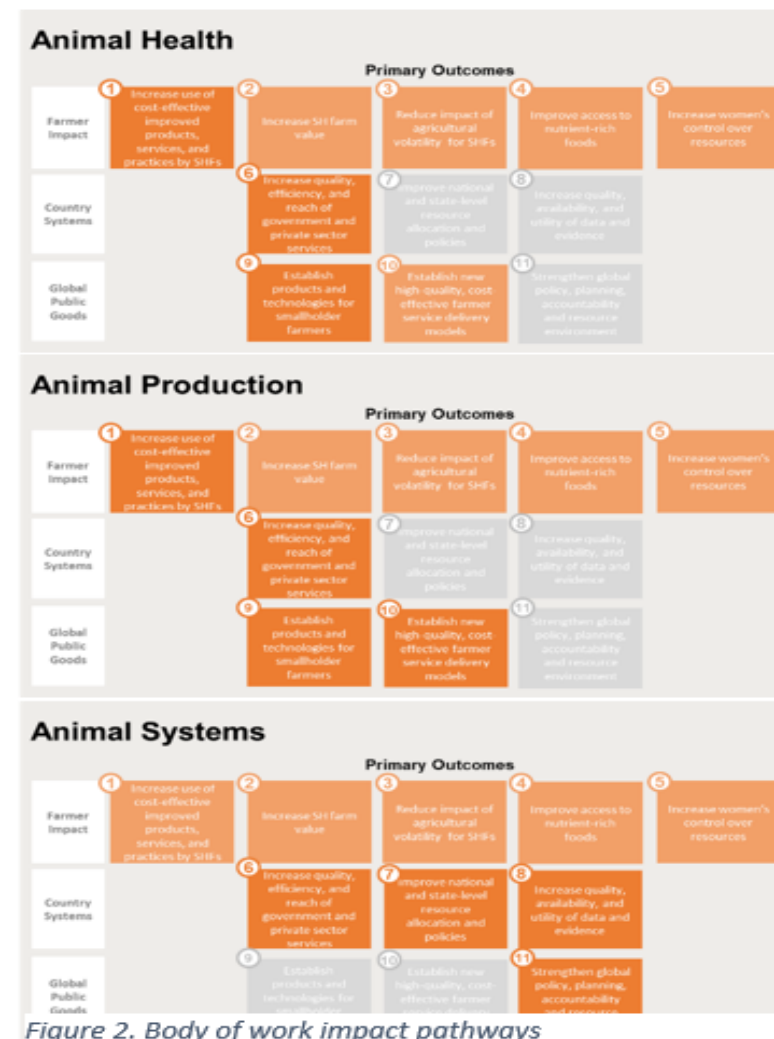
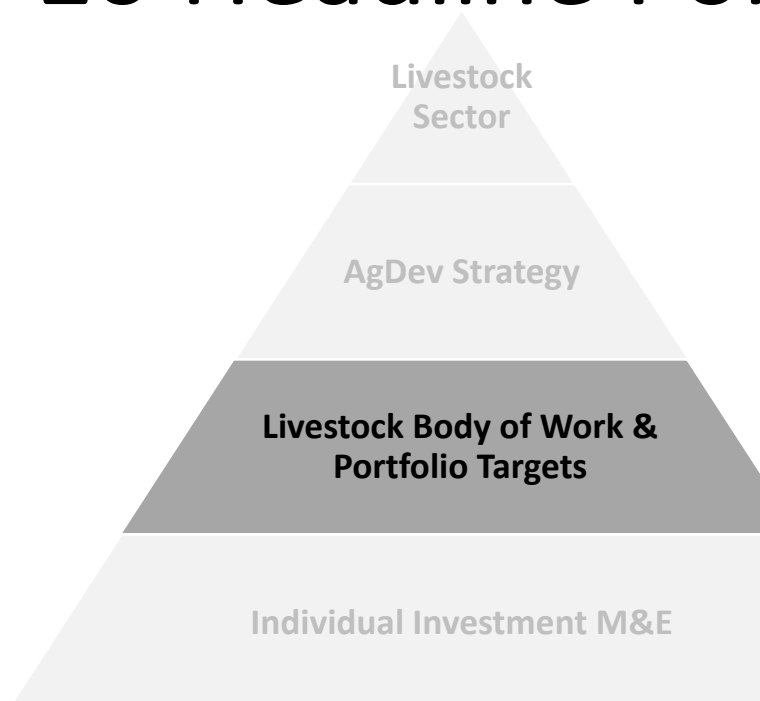


Figure 2. Body of work impact pathways

10 Headline Portfolio Targets



#	Headline goals
1	Net economic benefit to farmer
2	Effective immunization and medication coverage for priority diseases, by species (%) (defined by package of coverage for each species)
3	Percent of HHs rearing improved animals, by species (%)
4	Percent of improved animal in national herd or flock, by species (%)
5	Volume of business delivered by private sector
a	•# improved DOCs sold
b	•# doses of quality vaccines delivered
c	•# doses of AI delivered, by type (sexed vs conventional)
d	•Volume of milk sold through formal market
6	Share of total government budget allocated to livestock annually (%)
7	Prioritization and effective implementation of livestock strategy by government
8	Number of products registered (medicines, feed) or released (genetics) (#)
9	Percent increase in women's control of livestock assets and/or income from livestock (%)
10	Percent increase in per capita consumption of animal sourced foods

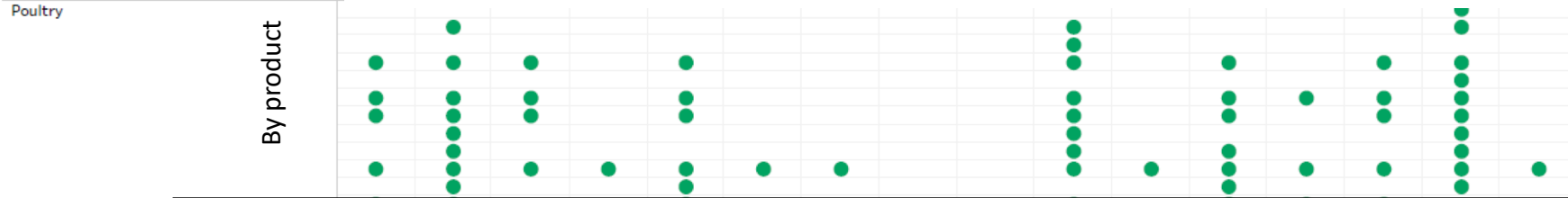
10 Headline Portfolio Targets

2 Effective immunization and medication

Source: Product registration and sales data

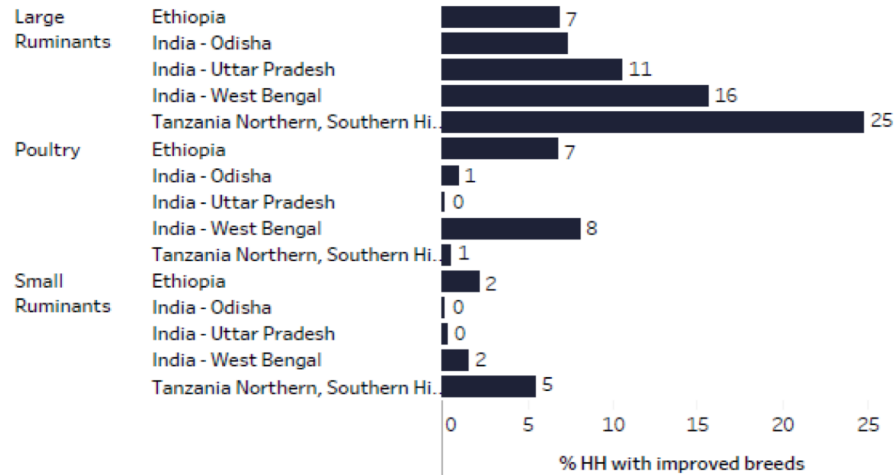
Products registered vaccine and parasatoid

By country



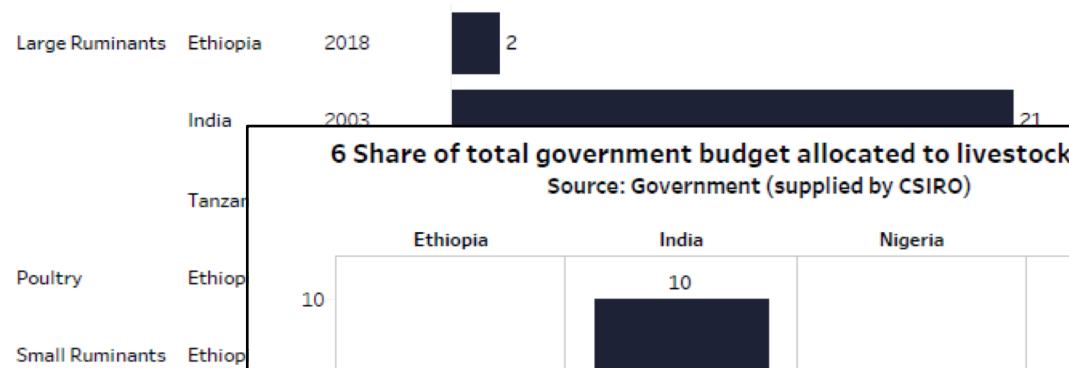
3 Percentage of HH rearing improved animals by species

Source: LSMS latest Year 2016



4 Percentage of improved animals in national herd or flock

Source: Census, government stats



6 Share of total government budget allocated to livestock annually

Source: Government (supplied by CSIRO)

