

Muscle Spindle. Long. Section.

Cat Gastroc. Silver.

To show the character of the
ultimate nerve terminations
in the Muscle Spindle.

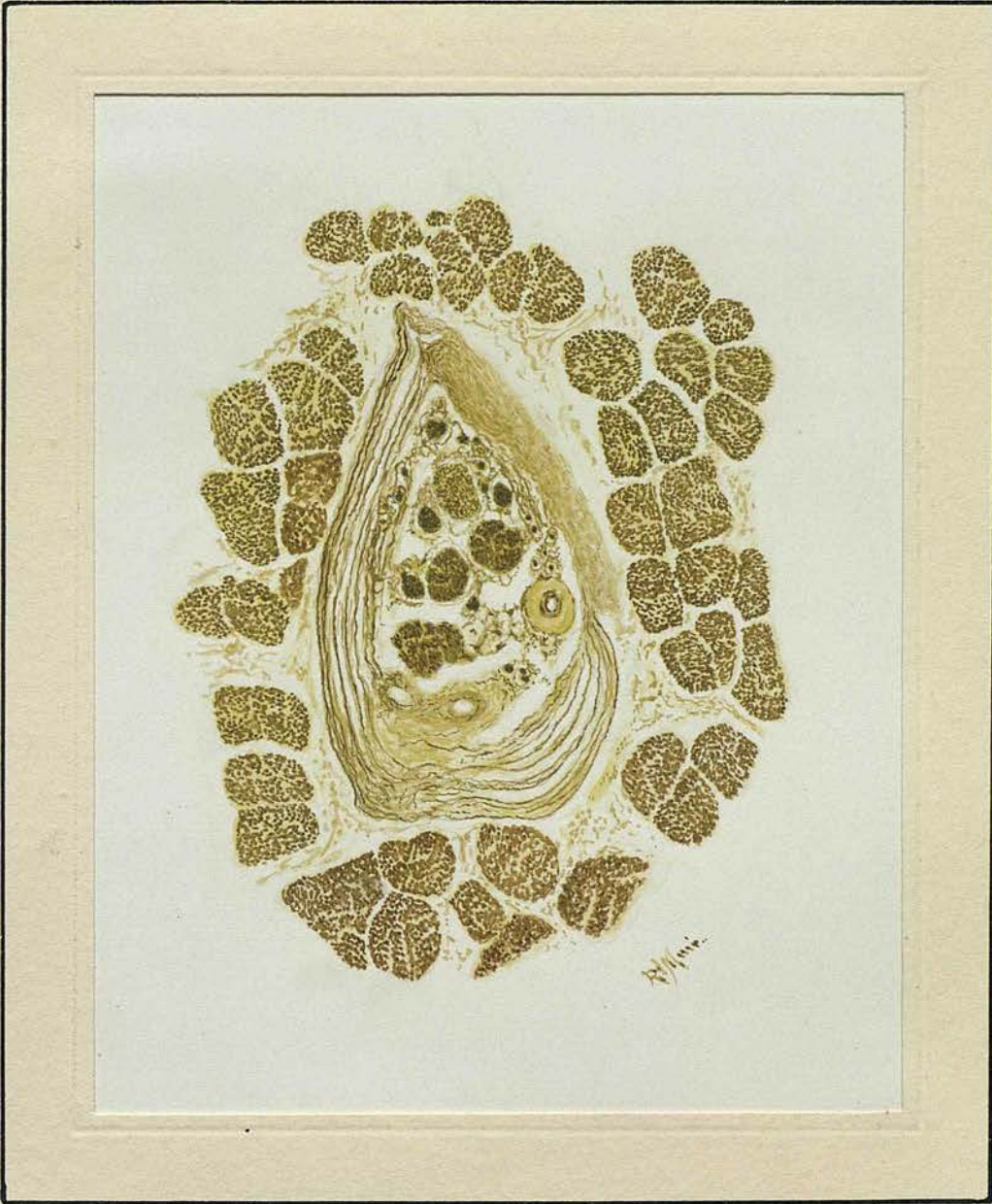


W. G. Smith

UNIVERSITY
LIBRARY
EDINBURGH

Muscle Spindle. Trans. Section.
Man. Sartorius. Silver.

To show the contents of a
human Muscle Spindle.



Muscle Spindle. Trans. Section.

Man. Flexor Long. Digit: Van Gieson.

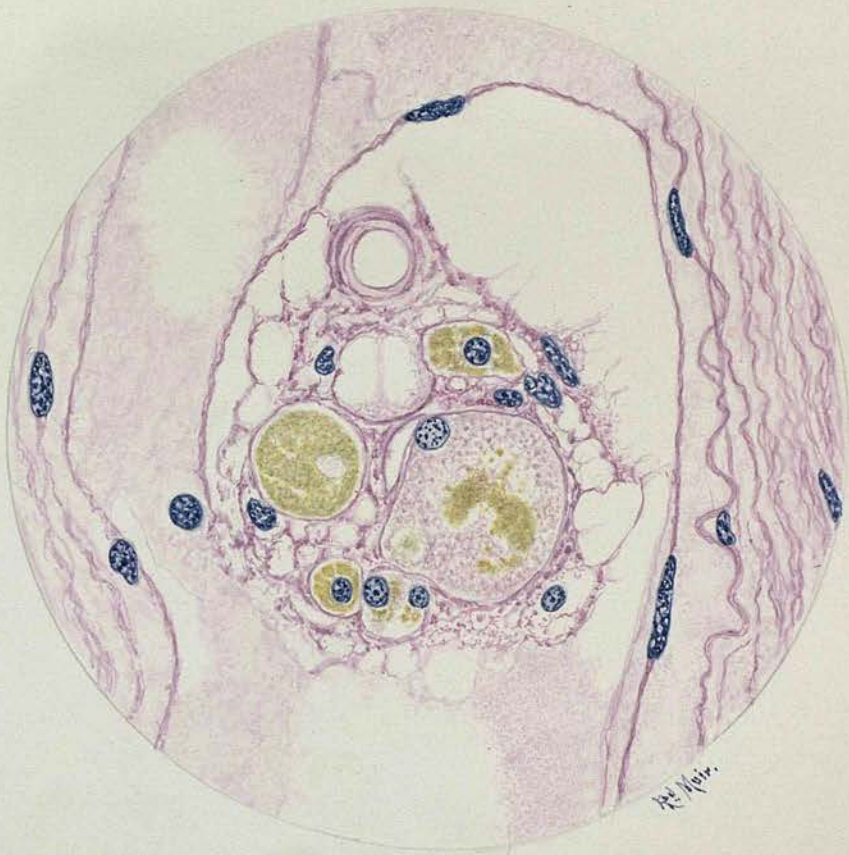
To show the capsule, axial
Sheath and axial core.



1891

Muscle Spindle. Trans. Section.
Man. Flexor Long. Digit. Van Gieson.

To show the degeneration in the
muscle fibres inside the Muscle
Spindle.



Complete Muscle Spindle in
longitudinal serial section.
Cat. Gastrocnemius. Silver.

Section I.

To show the Periaxial Lymph
Space with a nerve fibre at
the foot.



Complete Muscle Spindle in
longitudinal serial section.

Cat. Gastroc. Silver.

Section II.

To show the spindle nerve ending
round the muscle of the Muscle
Spindle.



Complete Muscle Spindle in
longitudinal serial section.

Cat. Gastroc. Silver.

Section III.

To show the nerve terminals.



Complete Muscle Spindle in
longitudinal serial section.

Cat. Gastroc. Silver.

Section IV.

The nuclei of the muscle fibres
in the Spindle are well shown.



Complete Muscle Spindle in
longitudinal serial section.

Cat. Gastroc. Silver.

Section V.

To show the nerve terminations
around the muscle fibres.



Complete Muscle Spindle in
longitudinal serial section.

Cat. Gastroc. Silver.

Section VI.

To show the intricate nature
of the nerve ramifications.



Complete Muscle Spindle in
longitudinal serial section.

Cat. Gastroc. Silver.

Section VII.

Section through Periaxial Lymph
space on the other side from the
first section. Nerves are seen
crossing the space.

(B 57. S. 9. Sc 3).

(Slide 3).



Muscle Spindle in transverse
serial section.

Rabbit. Gastroc. Silver.

Section I.

Section near to the equatorial
region: shows three intrafusal
muscle fibres.



Muscle Spindle in transverse
serial section

Rabbit. Gastroc. Silver.

Section II.

Shows equatorial region, with
five muscle fibres, with nuclei.

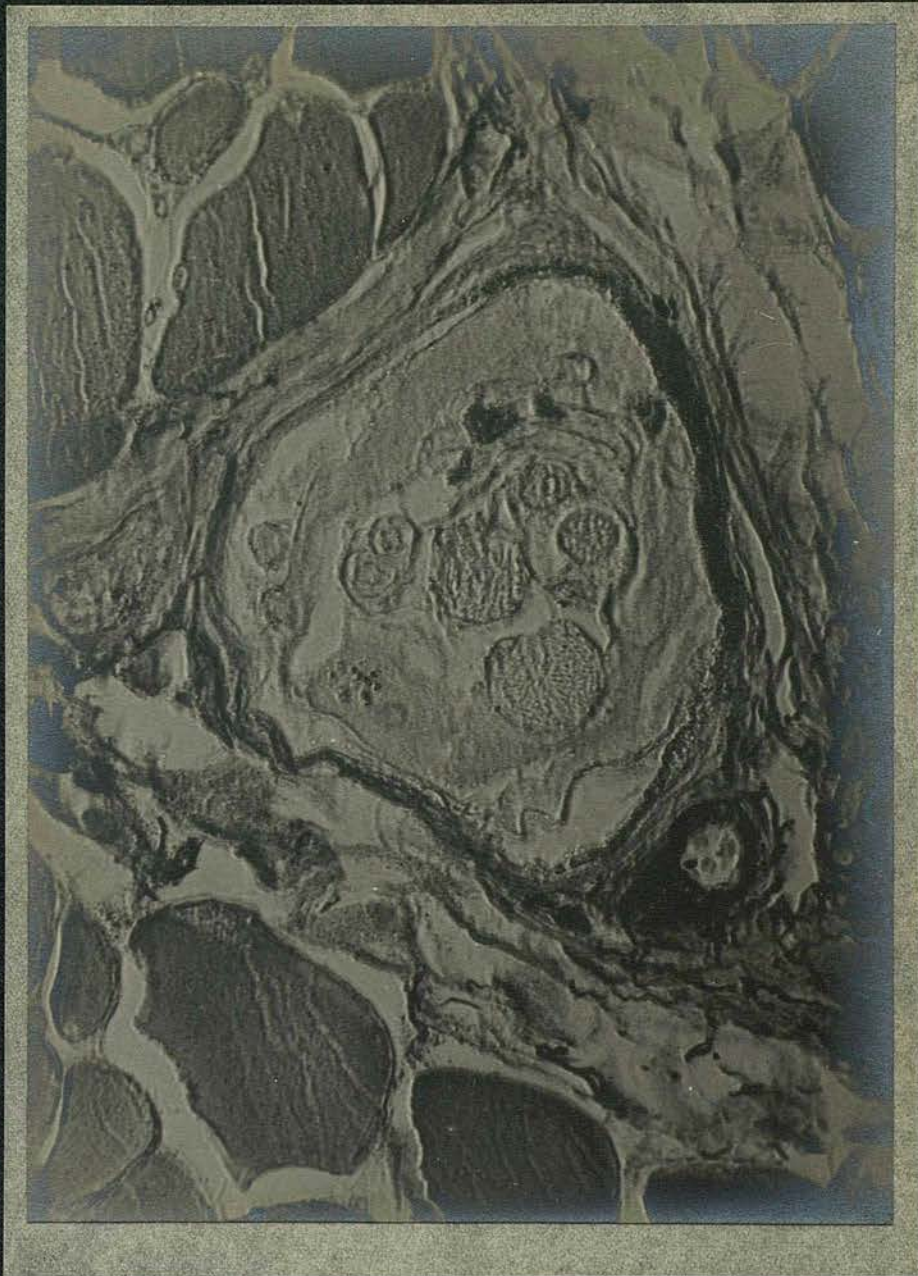


Muscle Spindle in transverse
serial section.

Rabbit. Gastroc. Silver.

Section III.

Section nearer the proximal
polar region. Lymph space is
a mere cleft.



Muscle Spindle in transverse
serial section.

Rabbit. Gastroc. Silver.

Section IV.

Proximal Polar region with
the capsule closely applied to
the muscle fibres.

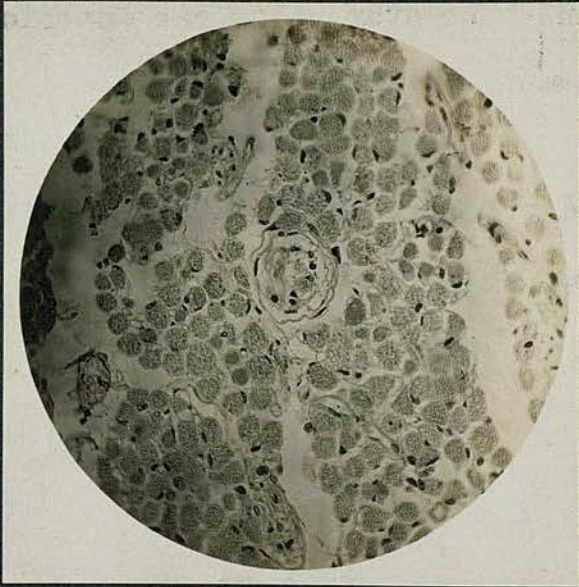


Muscle Spindle. Trans Section.
Man. Levator palpebrae Superioris.
Haemat. and Eosin.

Cross section of a muscle spindle
from the eye muscles.
Exceedingly rarely found.

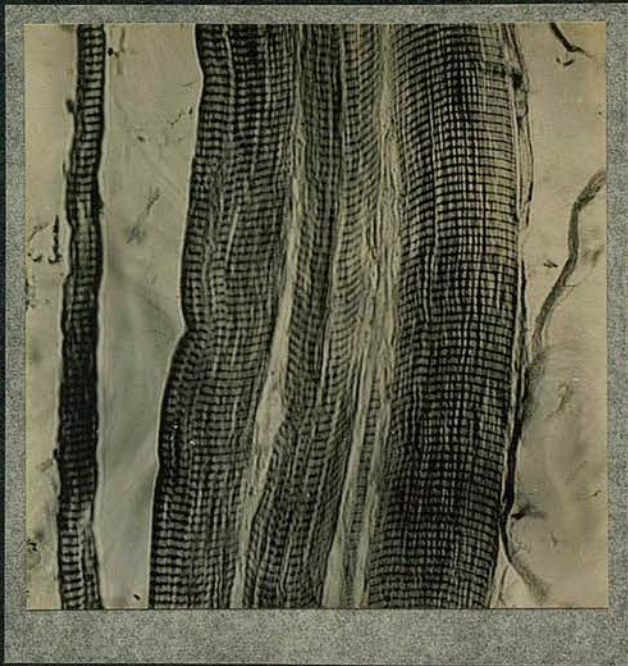
(B. 259. S1)

(Slide 40)



Normal Muscle Fibres. Long Section.
Man. Sartorius. Silver.

To show the appearance obtained
with Silver method.



Serial Sections of Nerve.

Entrance to Muscle Spindle.

Rabbit. Gastroc. Silver.

Section I.

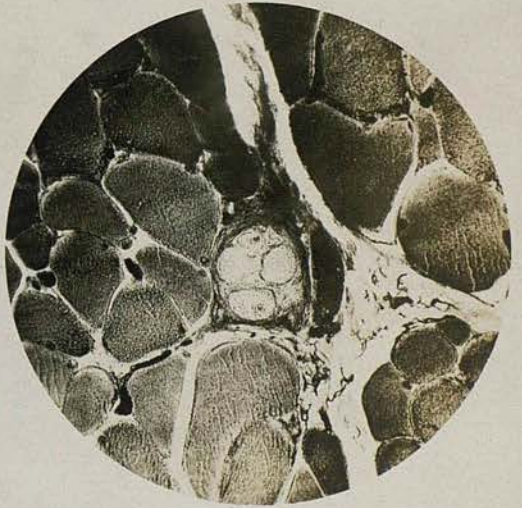
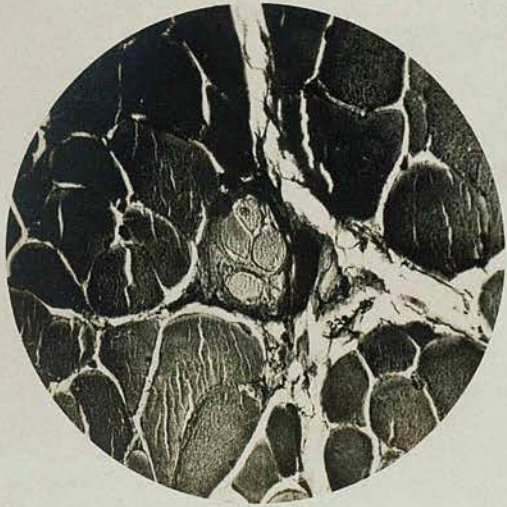
Nerve is seen in capsule.

Section II.

Nerve running into capsule.

Section III.

Sheath of nerve continuous with Capsule.



Serial Sections of Nerve.

Entrance to Muscle Spindle.

Rabbit. Gastroc. Silver.

Section IV.

Sheath of nerve well shown.

Section V.

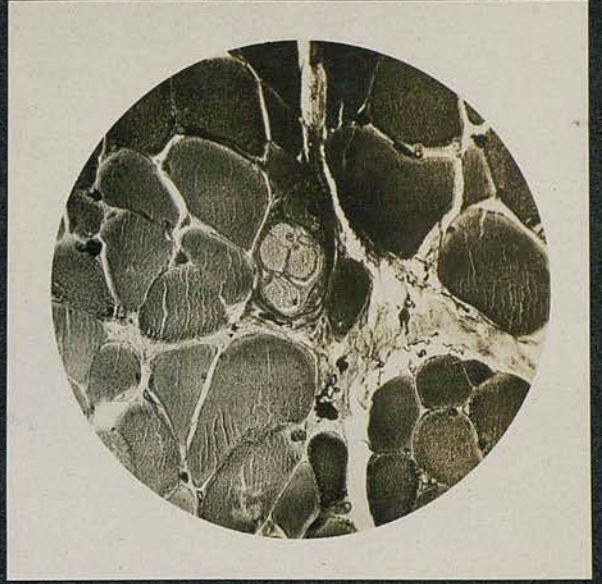
Nerve running round capsule of Spindle.

Sheath of Nerve is well seen,

Section VI.

Nerve fibres in capsule: sheath of

Nerve.



Serial Sections of Nerve.

Entrance to Muscle Spindle.

Rabbit. Gastroc. Silver.

Section VII.

Muscle fibres have increased to five.

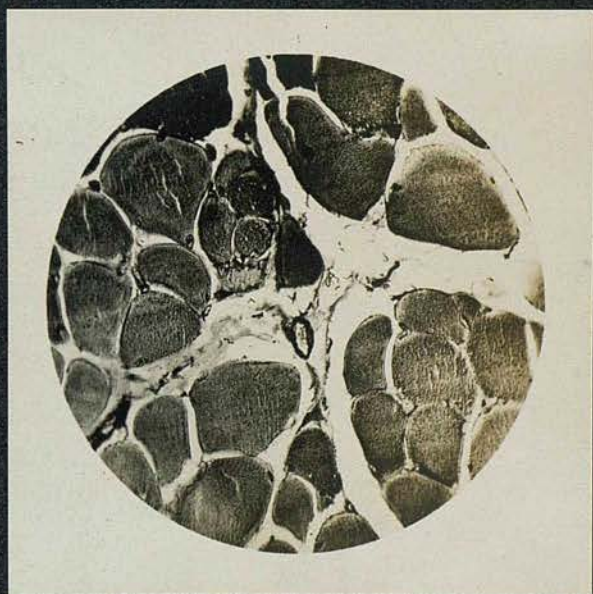
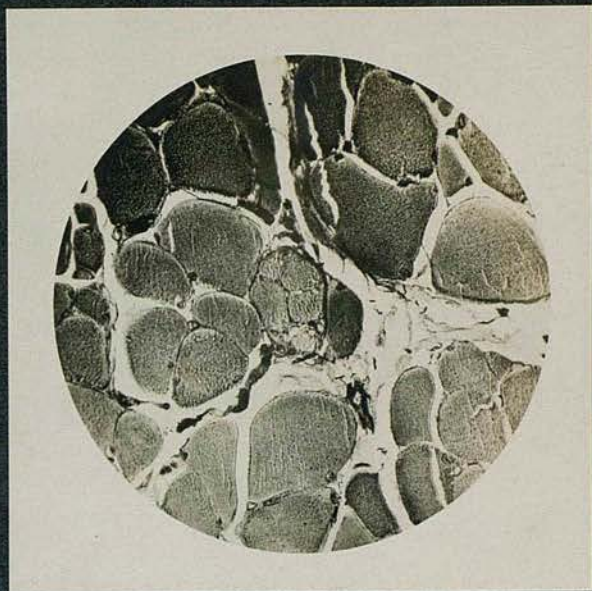
Section VIII.

Nerve is seen some distance away.

Section IX.

Muscle fibres about to enter into the

Muscle Spindle.



Muscle Spindle. Oblique Section.

Guinea-pig. Metatarsi. Silver.

Section I.

Oblique section of Spindle.

Section II.

Shows striated muscle fibre just
about to enter to form a spindle.



Two Muscle Spindles and Nerve
Supply.

Man. Flexor Long. Digit. Silver.

Section I.

Two spindles and Nerve Supply:

Nerve in cross section at foot of
photograph.

Section II.

Nerve, which supplies two spindles
enlarged.

Section III.

Two spindles - enlarged.



Two proximate Muscle Spindles.

Man. Flexor. Long. Digit. Silver

Section I.

Upper Spindle is the larger.

Section II.

35 Sections lower down: Spindles

becoming of equal size.

Section III.

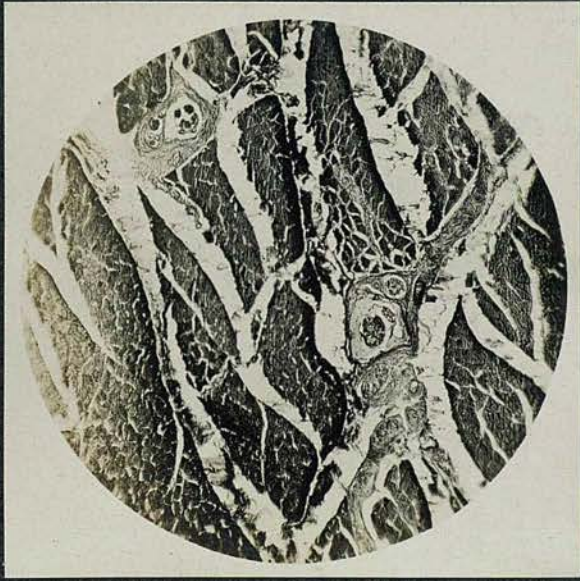
35 Sections lower down in series.

Spindles about equal in size.

Section IV.

20 sections lower down.

Lower Spindle is the larger.



Spindle Nerve in Serial Section.

Muscle Spindle. Trans. Section.

Man. Flexor Long. Digit. Silver.

Section I.

Medullated Nerves running into Lymph Space.

Section II.

Bundle of Nerves just inside Capsule.

Section III.

Bundle of Nerves nearer Central Core.



Spindle Nerve in Serial Section.

Muscle Spindle. Trans. Section.

Man. Flexor Long. Digit. Silver.

Section IV.

Bundle of Nerves in Lymph Space.

Section V.

Bundle of Nerves near to Axial Core.

Section VI.

Bundle of Nerves at Axial Sheath.



Marchi Degeneration of the Nerve Section.

Normal Sciatic Nerve for Comparison.

Rabbit. Marchi.

Section I.

Cross Section. Low Power.

Section II.

Cross Section. High Power.

Section III.

Long. Section. Low Power.

Section IV.

Long. Section. High Power.



Marchi Degeneration after Nerve Section.

Post. Tibial Nerve. Rabbit.

Six Days Degeneration. Marchi.

Section I.

Cross Section: Low Power.

Section II.

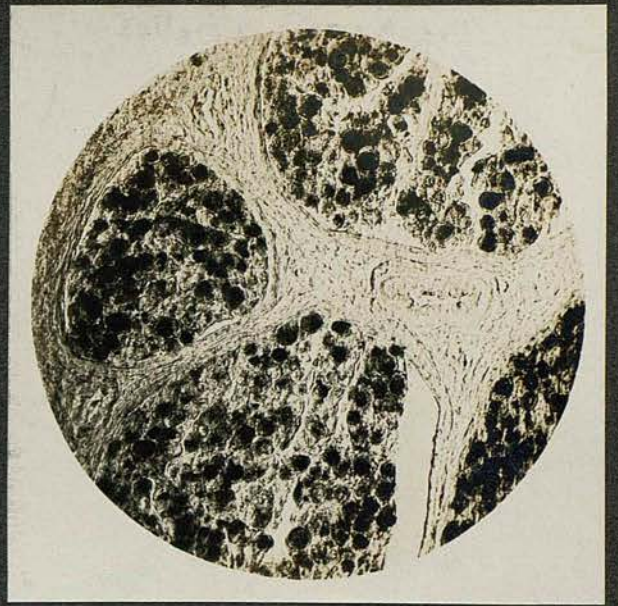
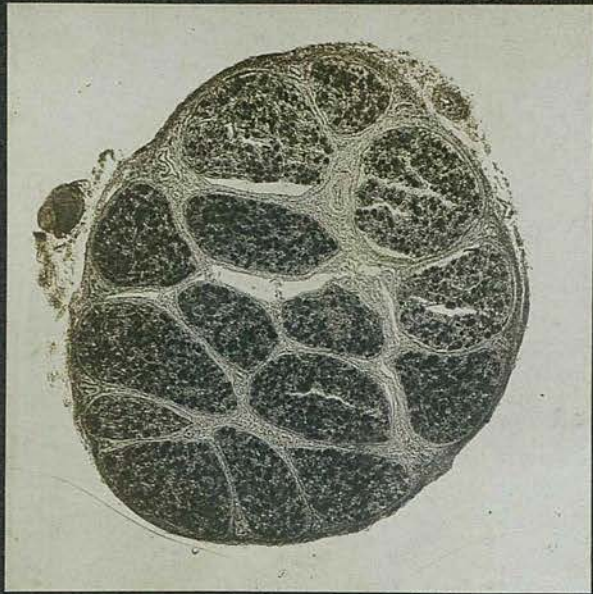
Cross Section: High Power.

Section III.

Long. Section: Low Power.

Section IV.

Long. Section: High Power.



Marchi Degeneration after Nerve Section.

Post. Tibial Nerve. Rabbit.

Nine Days Degeneration. Marchi.

Section I.

Cross Section: Low Power.

Section II.

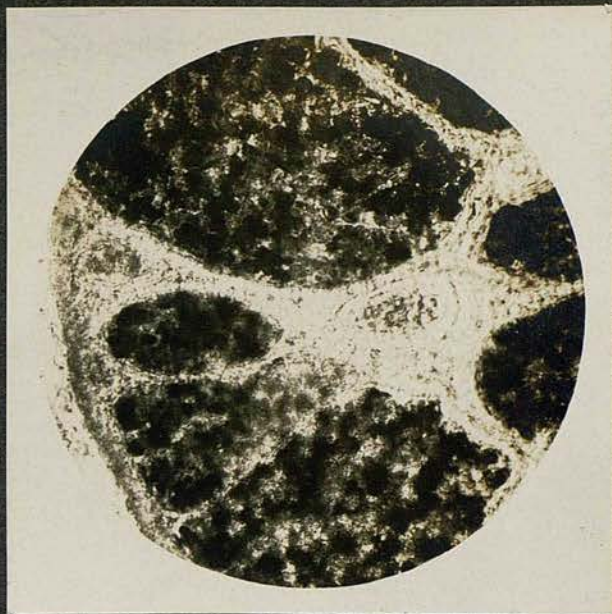
Cross Section: High Power.

Section III.

Long. Section: Low Power.

Section IV.

Long. Section: High Power.



Marchi Degeneration after Nerve Section.
Post. Tibial Nerve. Rabbit.
Eleven Days Degeneration. Marchi.
No fat cells in Perivascular Lymphatics.

Section I.

Cross Section: Low Power.

Section II.

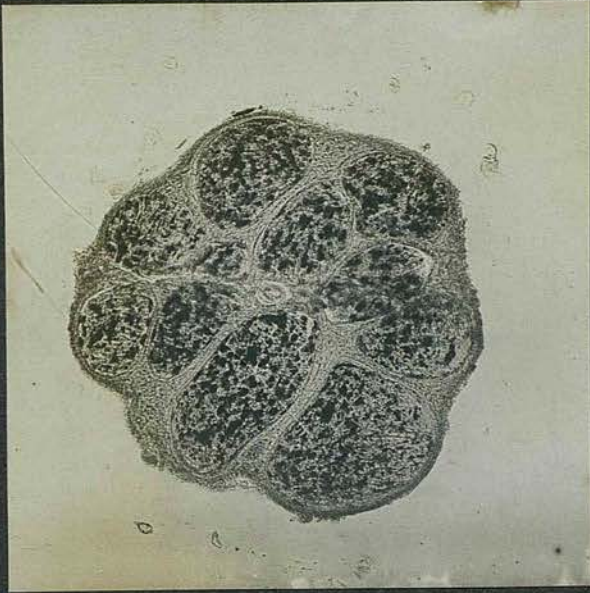
Cross Section: High Power.

Section III.

Long. Section: Low Power.

Section IV.

Long. Section: High Power.



Marchi Degeneration after Nerve Section.

Post. Tibial Nerve. Rabbit.

Eleven Days Degeneration. Marchi.

Fat-carrying cells in Perivascular Lymphatics.

Section I.

Cross Section: Low Power.

Section II.

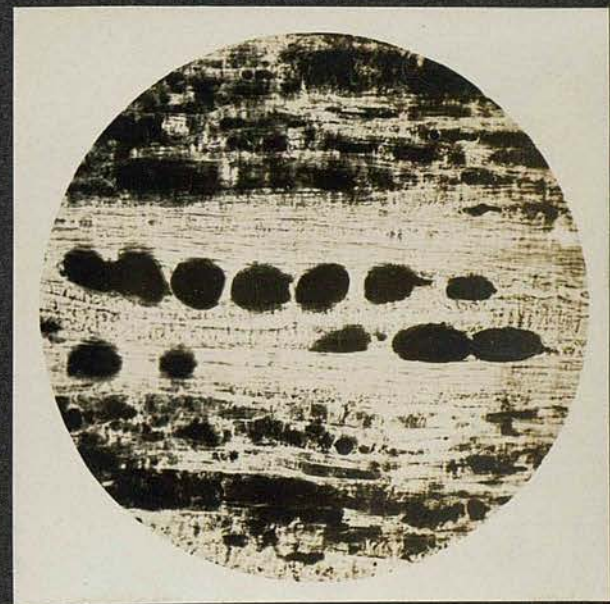
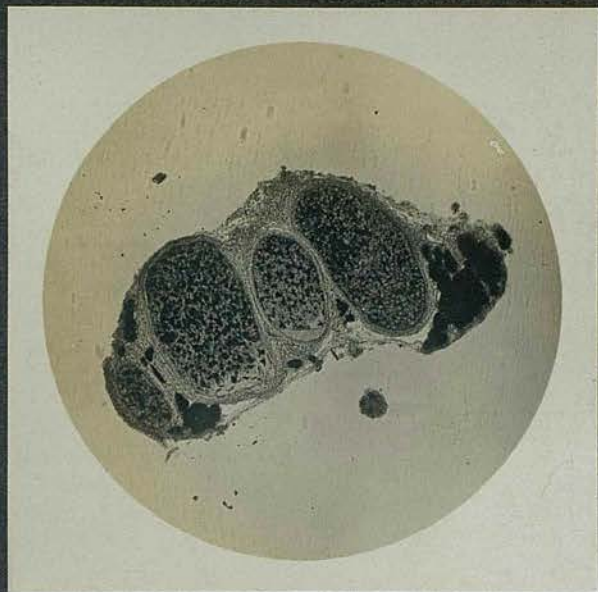
Cross Section: High Power.

Section III.

Long. Section: Low Power.

Section IV.

Long. Section: High Power.



Marchi Degeneration after Nerve Section.

Post. Tibial Nerve. Rabbit.

Thirteen Days Degeneration. Marchi.

Section I.

Cross Section: Low Power.

Section II.

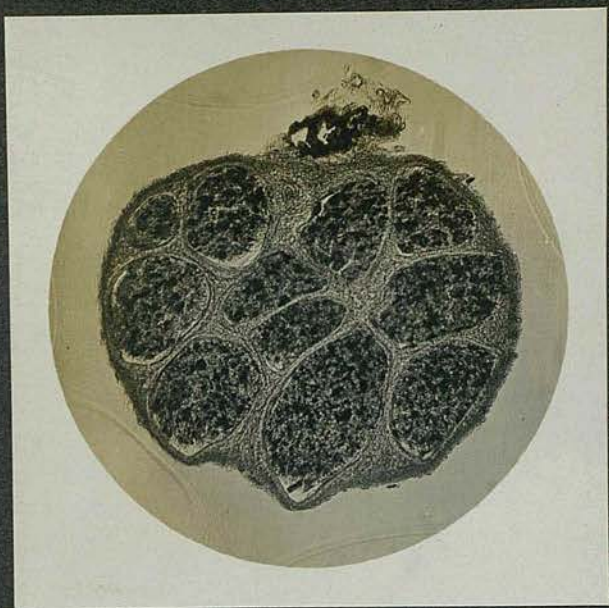
Cross Section: High Power.

Section III.

Long. Section: Low Power.

Section IV.

Long. Section: High Power.



Marchi Degeneration after Nerve Section.

Post. Tibial. Nerve. Rabbit.

Fifteen Days Degeneration. Marchi.

Section I.

Cross Section: Low Power.

Section II.

Cross Section: High Power.

Long. Section: Low Power.

Section IV.

Long. Section: High Power.

(B 252. S.1+S.2).

(Slides 78+79).

