

EDINBURGH
COLLEGE OF ART



231880

78952

AN ATTEMPTED RECONSTRUCTION OF DESIGN PROCEDURES
AND CONCEPTS DURING THE REIGN OF SULTAN QĀYTBĀY
(872/1468-901/1496) IN JERUSALEM AND CAIRO:

With special reference to the Madrasa Al-Ashrafiyya
and the Minbar in the Khānaqāh of Farag Ibn Barqūq.

Volume II

Archibald George Walls

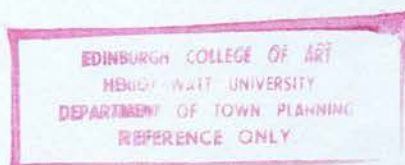
DA(Edin), MSc, ARIBA, ARIAS, FSA Scot.

Dissertation Presented for the Degree of Doctor of Philosophy.

Edinburgh College of Art, Heriot-Watt University.

Department of Architecture

October 1979



LIST OF PLATES (To be found in Volume II.)

- I. Jerusalem in 1483 from Bernhard of Breydenbach Peregrinationes in Terram Sanctam. The Madrasa al-Ashrafiyya is enclosed in a circle.
- II. Al-Ashrafiyya: A silent link reused in the blocking up of a window in the qibla iwān. (Courtesy of the BSAJ [Walls].)
- III. Al-Ashrafiyya: Possibly parts of al-Ashrafiyya's great inscription surrounding the Madrasa reused in the construction of Khāṣṣaki Sultān (Roxelane), 959/1552. (Courtesy of the BSAJ [Walls].)
- IV. Al-Ashrafiyya: Possibly parts of al-Ashrafiyya's decorated spandrels from the demolished east wall of the Madrasa, and other miscellaneous decorative elements.
- V. Al-Ashrafiyya: View from the south east. (Courtesy of the Creswell Archives, Ashmolean Museum.)
- VI. Al-Ashrafiyya: Engaged Column to Porch. (Courtesy of the BSAJ [Walls].)
- VII. Al-Ashrafiyya: The Madrasa's West Wall and Upper Recessed Portal from the Courtyard. (Courtesy of the Creswell Archives, Ashmolean Museum.)
- VIII. Al-Ashrafiyya: View from within the ruined Upper Vestibule of the Madrasa's West Wall and the Minaret Bāb al-Silsila behind. (Courtesy of the Creswell Archives, Ashmolean Museum.)
- IX. Al-Ashrafiyya: A view of the West and North sides of the Madrasa. (Courtesy of the Creswell Archives, Ashmolean Museum.)
- X. Al-Ashrafiyya: Remains of a decorated engaged column and window recess above the Madrasa's north west door.
- XI. Al-Ashrafiyya: Detail of a photograph showing the building c.1830. (From Wilson, Ch.W., Jerusalem the Holy City. ill.p.53.)
- XII. Al-Ashrafiyya: The upper portions of al-Ashrafiyya seen from in front of the south door of Qubbat al-Ḥakhra.
- XIII. [99] Mosque and Mausoleum of Qāyṭbāy: The Sahn and the qibla iwān.
- XIV. [99] Mosque and Mausoleum of Qāyṭbāy: The Sahn's North Wall.
- XV. [99] Mosque and Mausoleum of Qāyṭbāy: Decorated engaged column to recessed window above one of the Sahn's doors.
- XVI./

- XVI. [223] Mosque of Qāyṭbāy at Qal^cet al-Kabsh: The Sahn's great arch opposite the Qibla Iwān.
- XVII. [223] Mosque of Qāyṭbāy at Qal^cet al-Kabsh: The Sahn's side arch in the south wall.
- XVIII. [223] Mosque of Qāyṭbāy at Qal^cet al-Kabsh: One of the eight identical panels which flank the Sahn's upper windows.
- XIX. [223] Mosque of Qāyṭbāy at Qal^cet al-Kabsh: Painted kufesque inscription surrounding the Sahn.
- XX. [49] Mosque of Abū Bakr Muzhir: Part of the kufesque inscription within the recessed portal.
- XXI. The Sabīl of Qāyṭbāy: In the background is the Madrasa ^cUthmāniyya above the West Riwaq of al-Ḥaram al-Sharīf.
- XXII. [32] Mosque of Sīdī Madyan: The arcade across the front of the Qibla Iwān.
- XXIII. [82] Mosque of Sīdī Madyan: One of the Sahn's side walls with the arcading crossing the Qibla and its opposite Iwān.
- XXV. [228] House of Qāyṭbāy: Principal elevation to the internal courtyard.
- XXVI. [239] Mosque of Sultān Shāh: An octagonal pillar decorated with flat-carved arabesques.
- XXVII. [99] Mosque and Mausoleum of Qāyṭbāy: One of the decorated columns in the kuttāb of the sabīl-kuttāb.
- XXVIII. [70] Sabīl-Kuttāb Qāyṭbāy, opposite al-Azhar: The panel wrapped around the Sabīl-Kuttāb's north west corner.
- XXIX. [67] Mausoleum and Sabīl-Kuttāb of al-Chūrī: Panel's wrapped around the Sabīl-Kuttāb's north west corner.
- XXX. [99] Mosque and Mausoleum of Qāyṭbāy: The pointed cruciform centre to the Vestibule's ablaq fan vault.
- XXXI. [114] Mosque of Qagmās al-Ishāqī: Detail of rectilinear muqarnas crowning an external window recess.
- XXXII. [223] Mosque of Qāyṭbāy at Qal^cet al-Kabsh: Painted and inscribed shield of Qāyṭbāy in one of the spandrels of the Sahn's great arches; note also the other painted elements.
- XXXIII. [324] Sabīl-Kuttāb of Qāyṭbāy: The ablaq semi-dome over the recessed portal.

- XXXIV. [221] Wakālat Qāyṭbāy: Decorated muqarnas bracket and inscription terminal within reveal of door opening.
- XXXV. [224] Wakālat Qāyṭbāy: Geometric panel, with painted interstices, at the rear of the portal recess.
- XXXVI. [75] Wakālat Qāyṭbāy, opposite al-Azhar: The recessed portal.
- XXXVII. [75] Wakālat Qāyṭbāy, opposite al-Azhar: Rectilinear muqarnas across the internal corner of the recessed portal.
- XXXVIII. [75] Wakālat Qāyṭbāy, opposite al-Azhar: The curvilinear muqarnas on the intrados and extrados of the arched door opening at the rear of the recessed portal.
- XXXIX. [223] Mosque of Qāyṭbāy at Qal^cet al-Kabsh: The extrados of the 1st decorated voussoir in the Sahn's north arch.
- XL. [223] Mosque of Qāyṭbāy at Qal^cet al-Kabsh: The intrados of the 1st voussoir in the Sahn's north arch.
- XLI. [223] Mosque of Qāyṭbāy at Qal^cet al-Kabsh: The upper areas of the recessed portal in the north elevation.
- XLII. [49] Mosque of Abū Bakr Mazhir: The semi-dome over the recessed portal.
- XLIII. [44] Mosque and Mausoleum of an-Nāṣir Muḥammad ibn Qalā'ūn: A marble inscription. (After Bourgoïn, J., Precis de l'Art Arabe. IV, Planche 40)
- XLIV. Candlestick presented by Qāyṭbāy to the Shrine of the Prophet at Medīna in 887/1482-3. (After Arts Council, The Arts of Islam. no. 226.)
- XLV. [129] Mosque and Mausoleum of Gānem al-Bahlawān: The octagonal centre in the Vestibule's ablaq fan vault. (Courtesy of the Creswell Archive, Ashmolean Museum.)
- XLVI. [129] Mosque and Mausoleum of Gānem al-Bahlawān: A decorated panel in the rear wall of the recessed portal.
- XLVII. [75] Wakālat Qāyṭbāy, opposite al-Azhar: The north west entrance.
- XLVIII. [75] Wakālat Qāyṭbāy, opposite al-Azhar: The irregular octagonal centre in the entrance's ablaq fan vault.
- XLIX. [114] Mosque of Qaḡmās al-Ishāqī: Joggled cill course showing the three basic decorative types; geometric, arabesque, and chinoiserie.
- I. [129] Mosque and Mausoleum of Gānem al-Bahlawān: The decorated cresting along the wallhead showing three types of decoration; arabesque/

arabesque, arabesque and ribbon development, and chinoiserie combined with arabesques.

- LI. [149] Khānaqāh of Farag ibn Barqūq: Mastaba to the recessed south west door in the Sahn outlined by a simple moulding.
- LIII. [149] Khānaqāh of Farag ibn Barqūq: Termination of mastaba's moulding directly below the recess' side wall.
- LIIII. Al-Ashrafiyya: Detail of the eroded lintel over the Sahn's north west doorway.
- LIV. [75] Wekālat Qāyṭbāy, opposite al-Azhar: Detail of north west door's lintel and flanking panel.
- LV. [49] Mosque of Abū Bakr Muzhir: The decorated lintel and side panels in the Mosque's second recessed portal.
- LVI. [114] Mosque of Qagmās al-Ishāqī: The decorated lintel over the door of the sabīl-kuttāb.
- LVII. [114] Mosque of Qagmās al-Ishāqī: Decorated wall panel in the īwān opposite the Qibla īwān.
- LVIII. Sabīl of Qāyṭbāy: One of six reworked spandrels.
- LIX. [49] Mosque of Abū Bakr Muzhir: The white outlines are the initial cuts for the intended decoration in the spandrels to the Sahn's north east keel arch.
- LX. [216] Mosque of Timrāz al-Ahmadi (?): The initial cutting laying out a panel's decoration.
- LXI. [216] Mosque of Timrāz al-Ahmadi (?): The completed panel paired with the panel illustrated in Plate LX.
- LXII. [223] Mosque of Qāyṭbāy at Qal^cet al-Kabsh: The principal recessed portal.
- LXIII. [223] Mosque of Qāyṭbāy at Qal^cet al-Kabsh: Detail of the joggling occurring in alternate stone courses up the outside of the principal recessed portal's moulded frame.
- LXIV. [99] Mosque and Mausoleum of Qāyṭbāy: One of the decorated stucco tympana over the windows of the Qibla īwān and the īwān opposite.
- LXV. [519] Mosque of Qāyṭbāy on Rōda: One of the stucco tympana in the Qibla īwān.

LXVI./

- LXVI. [519] Mosque of Qāyṭbāy on Rōḍa: Detail of one of the stucco tympana in the qibla iwān.
- LXVII. [192] Zāwiyat Fayrūz: Recessed window with a commonplace decorated lintel.
- LXVIII. [60] Mosque of al-Qādī ^c Abd al-Bāsīt: Detail of a commonplace decorated window lintel.
- LXIX. [75] Wekālat Qāyṭbāy, opposite al-Azhar: A shield of Qāyṭbāy, and below it a panel which is a variation of the panel illustrated in Plate XLIII.
- LXX. [75] Wekālat Qāyṭbāy, opposite al-Azhar: A composite lintel, decorated with a geometrical design, over one of the shopping booths along the Wekālat's frontage.
- LXXI. [149] Minbar of Qāyṭbāy: A general view showing the Gateway, and the internal staircase rising up to the Canopy with its onion shaped dome.
- LXXII. [149] Minbar of Qāyṭbāy: The right hand side.
- LXXIII. [149] Minbar of Qāyṭbāy: Detail of the decorated rectilinear muqarnas along the front of the Gateway.
- LXXIV. [149] Minbar of Qāyṭbāy: The decorated rectilinear muqarnas along the side of the Gateway, and below them a geometric panel.
- LXXV. [74] Drinking Trough of Qāyṭbāy, opposite al-Azhar: Detail typical of the internal wall decoration; note, the cup design at bottom centre of the recess' head.
- LXXVI. [149] Minbar of Qāyṭbāy: Detail of the onion shaped dome while it was being squeezed.
- LXXVII. [149] Minbar of Qāyṭbāy: Details of the Minbar. (After Prisse d'Avennes, A., L'Art Arab. Pl. XLIX.)
- LXXVIII. [119] Mosque of Gānī Bek, 830/1426-27: Recessed Portal.
- LXXIX. [204] Mosque of al-Qādī Yahyā, 856/1452: Recessed Portal.
- LXXX. [97] Al-Azhar Mosque, (Qāyṭbāy Entrance) 873/1469: Recessed Portal.
- LXXXI. [99] Mosque and Mausoleum of Qāyṭbāy, 877-79/1472-74: The principal Recessed Portal.
- LXXXII. [99] Mosque and Mausoleum of Qāyṭbāy, 877-79/1472-74: Recessed Portal leading to the Mausoleum.
- LXXXIII./

- LXXXIII. [101] Maq^cad Qāyṭbāy, 879/1474: Recessed Portal.
- LXXXIV. [104] Rab^c Qāyṭbāy, 879/1474: Recessed Portal.
- LXXXV. [76] Sabīl-Kuttāb Qāyṭbāy, opposite al-Azhar, 881/1477:
Recessed Portal.
- LXXXVI. [324] Sabīl-Kuttāb Qāyṭbāy, 884/1479: Recessed Portal.
- LXXXVII. [114] Mosque of Qaḡmās al-Ishāqī, 885-86/1480-81: Recessed
Portal.
- LXXXVIII. [228] House of Qāyṭbāy, 890/1485: Principal Recessed Portal.
- LXXXIX. [228] House of Qāyṭbāy, 890/1485: Secondary Recessed Portal.
- XC. [235] House of Aḡmad Katkhudā ar-Razzāz, before 900/1494-95:
Recessed Portal built by Qāyṭbāy.
- XCI. [211] Mosque of Azbak al-Yūsufī, 900/1494-95: Recessed Portal.
- XCII. Mosque of Princess ^cAṣalbāy, at Medīnat al-Fayyūm,
905/1499: Recessed Portal.
- XCIII. [322] Remains of Palace of Qānṣūh al-Ghūrī, 906-22/1501-16:
Recessed Portal. (after Tarchi, U., L'Architettura e
l'Arte Musulmana, Tav. 115.)
- XCIV. [76] Sabīl-Kuttāb Qāyṭbāy, opposite al-Azhar, 881/1477:
Upper portions of the engaged column on the north west
corner.
- XCV. [378] Mosque of Sayyida ^cĀ'isha, 1175/1762: Engaged column on
the south west corner.
- XCVI. [97] Al-Azhar Mosque, 13th/19th cent.: Engaged column on
south west corner and repeated once on the west elevation
and once on the south elevation.
- XCVII. [75] Wekālat Qāyṭbāy, opposite al-Azhar, 882/1477: Composite
lintel over one of the shopping booths along the Wekalat's
frontage.
- XCVIII. [75] Wekālat Qāyṭbāy, opposite al-Azhar, 882/1477: Composite
relieving arch above a joggled lintel over one of the
shopping booths along the Wekālat's frontage.
- IC. Mosque of Sīdī al-Rafā^ci, 1329/1911: Decorated lintel
and relieving arch.

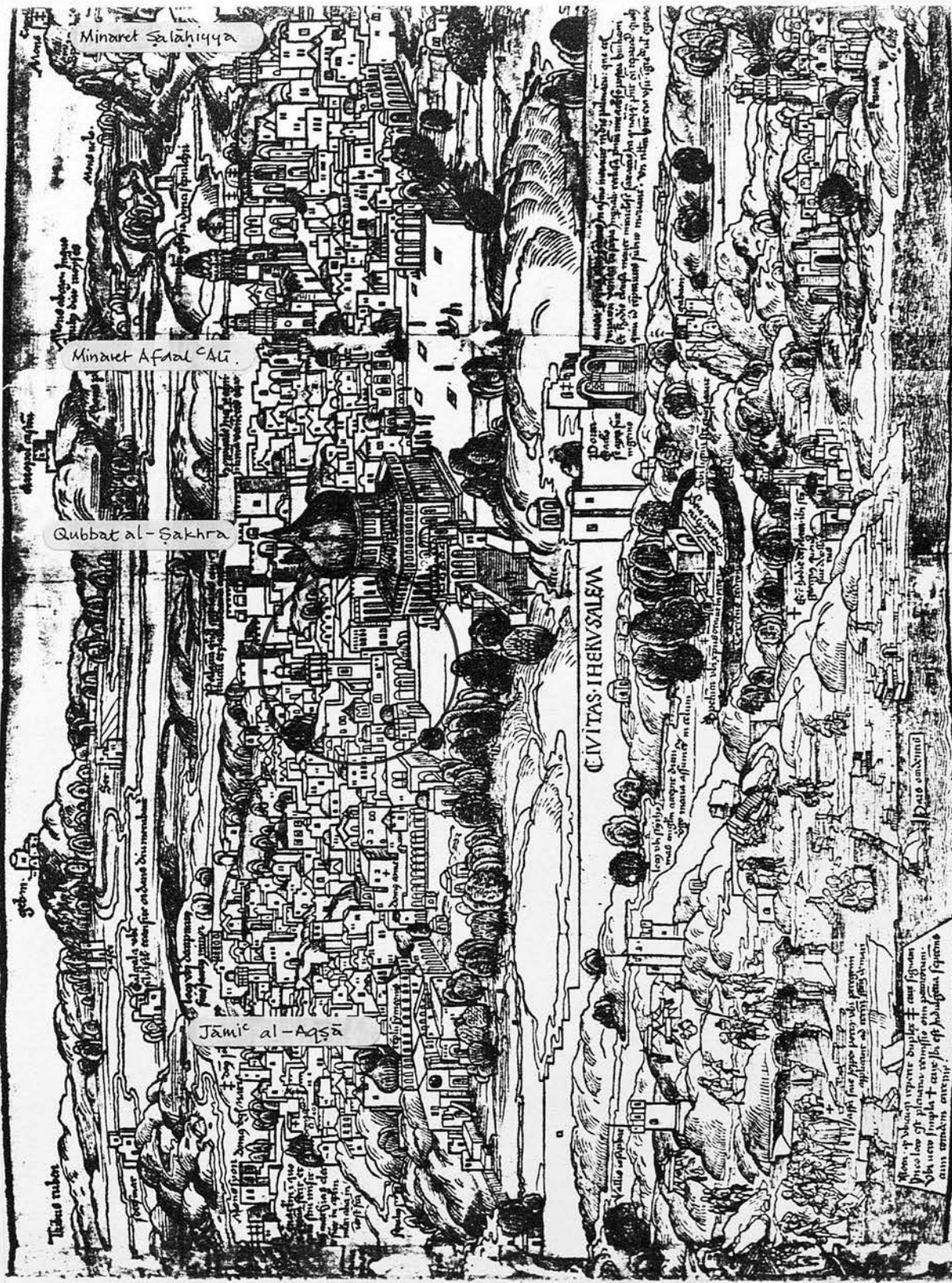


PLATE I.

Jerusalem in 1492 from

Bernhard of Breydenbach

Peregrinationes in

Terram Sanctam.

The Madrasa al-Ashrafiyya

is enclosed in a circle.



PLATE II.

Al-Ashrafiyya: A silent link reused in the blocking up of a window in the Qibla ĩwan. (Courtesy of the BSAJ [Walls].)



PLATE III.

Al-Ashrafiyya: Possibly parts of al-Ashrafiyya's great inscription surrounding the Madrasa reused in the construction of Khāṣṣaki Sultān (Roxelane), 959/1552. (Courtesy of the BSAJ [Walls].)



PLATE IV.

Al-Ashrafiyya: Possibly parts of al-Ashrafiyya's decorated spandrels from the demolished east wall of the Madrasa, and other miscellaneous decorative elements.

PLATE V

Al-Ashrafiyya: View
from the south east.
(Courtesy of the
Creswell Archives,
Ashmolean Museum).





PLATE VI.

Al-Ashrafiyya: Engaged Column to Porch. (Courtesy BSAJ [Walls] .)

PLATE VII

Al-Ashrafiyya: The
Madrasa's West Wall and
Upper Recessed Portal
from the Courtyard.
(Courtesy of the Creswell
Archives, Ashmolean
Museum.)





PLATE VIII

Al-Ashrafiyya: View from within the ruined Upper Vestibule of the Madrasa's West Wall and the Minaret Bab al-Silsila behind. (Courtesy of the Creswell Archives, Ashmolean Museum).

PLATE IX

Al-Ashrafiyya:

A view of the West and
North sides of the
Madrase. (Courtesy of
the Creswell Arvhives,
Ashmolean Museum).

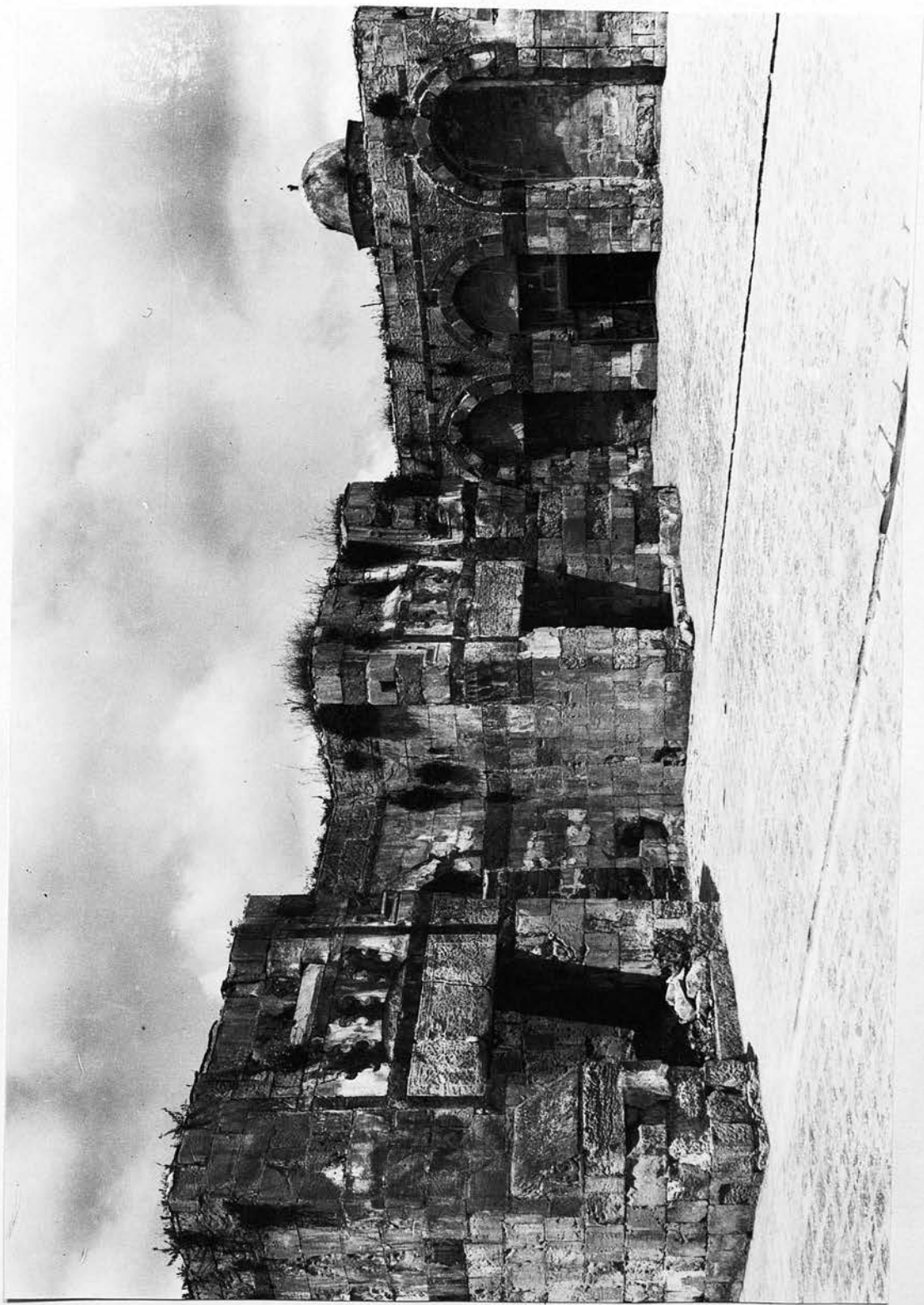


PLATE IX.

Al-Ashrafiyya: Looking towards north west corner of Madrasa.

(Courtesy of the Creswell Archive, Ashmolean Museum.)

PLATE X.

Al-Ashrafiyya: Remains of a ~~see~~
decorated engaged column and
window recess above Madrasa's
north west door.

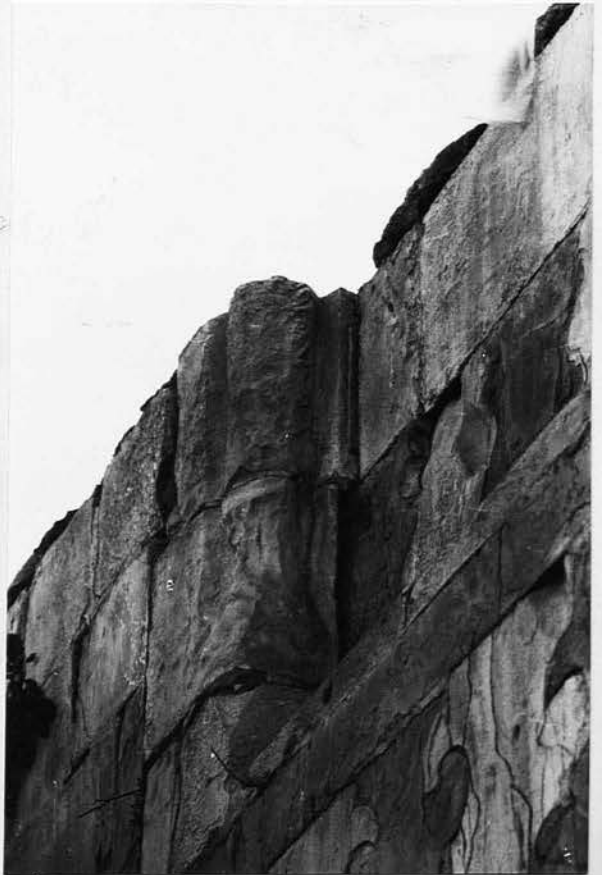


PLATE IX.

Al-Ashrafiyya: Looking towards north west corner of Madrasa.
(Courtesy of the Creswell Archive, Ashmolean Museum.)

PLATE X.

Al-Ashrafiyya: Remains of a decorated engaged column and window recess above Madrasa's north west door.

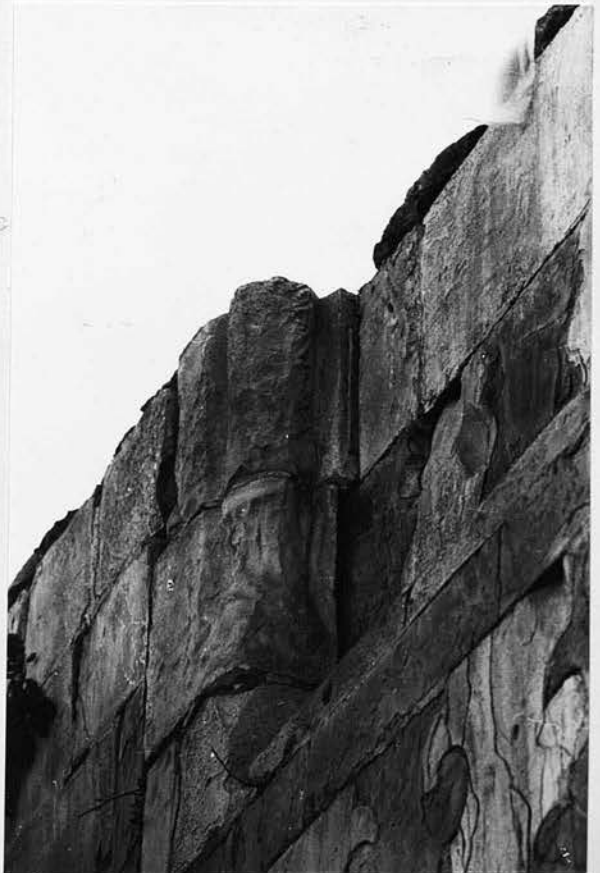


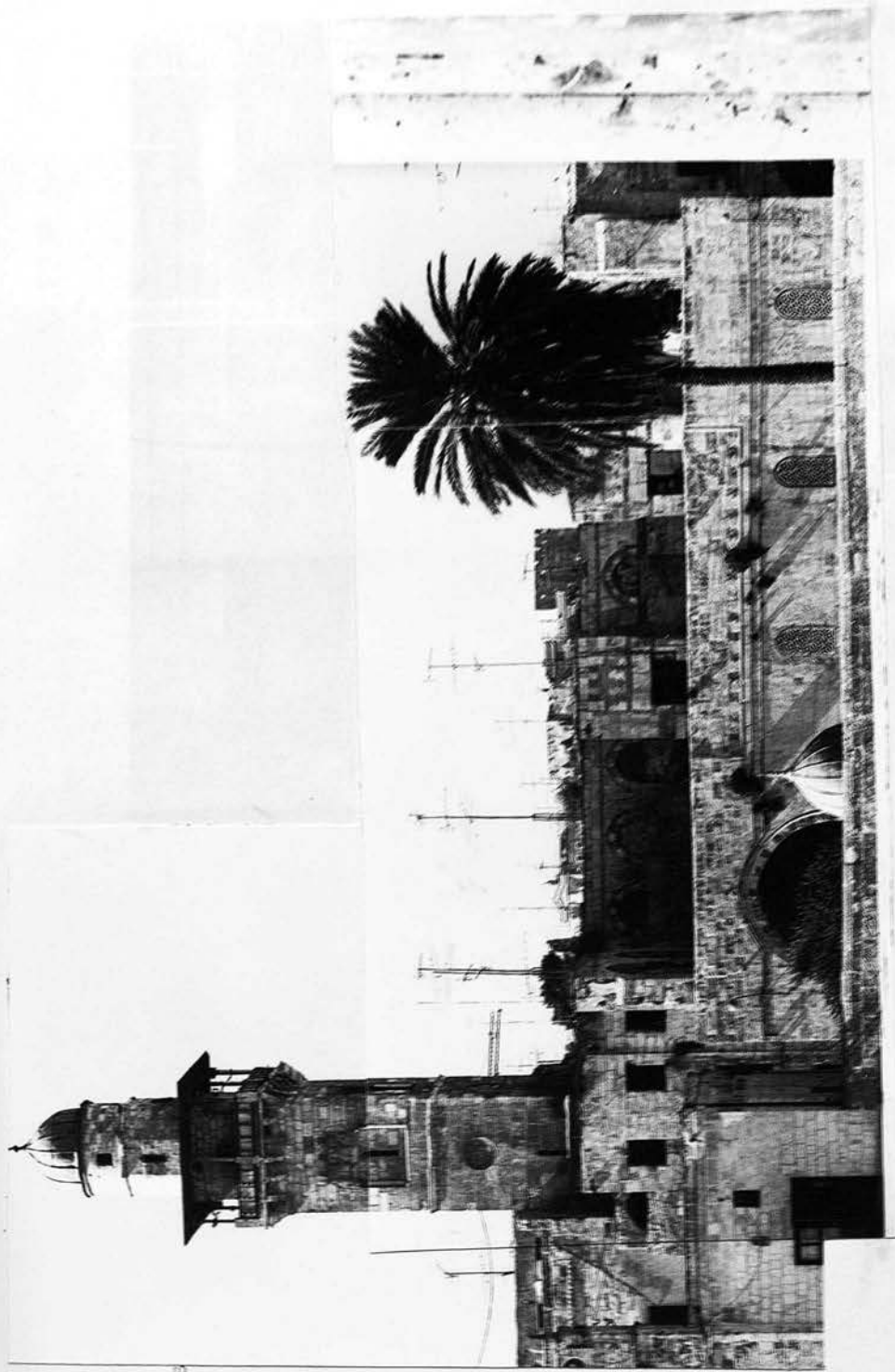


PLATE XI.

Al-Ashrafiyya: Detail of a
photograph showing the building
c.1880. (From Wilson, Ch.W.,
Jerusalem the Holy City, ill.p.53)

PLATE XII.

Al-Ashrafiyya: The upper portions
of al-Ashrafiyya seen from
in front of the south door
of Qibbat al-Sakhira.



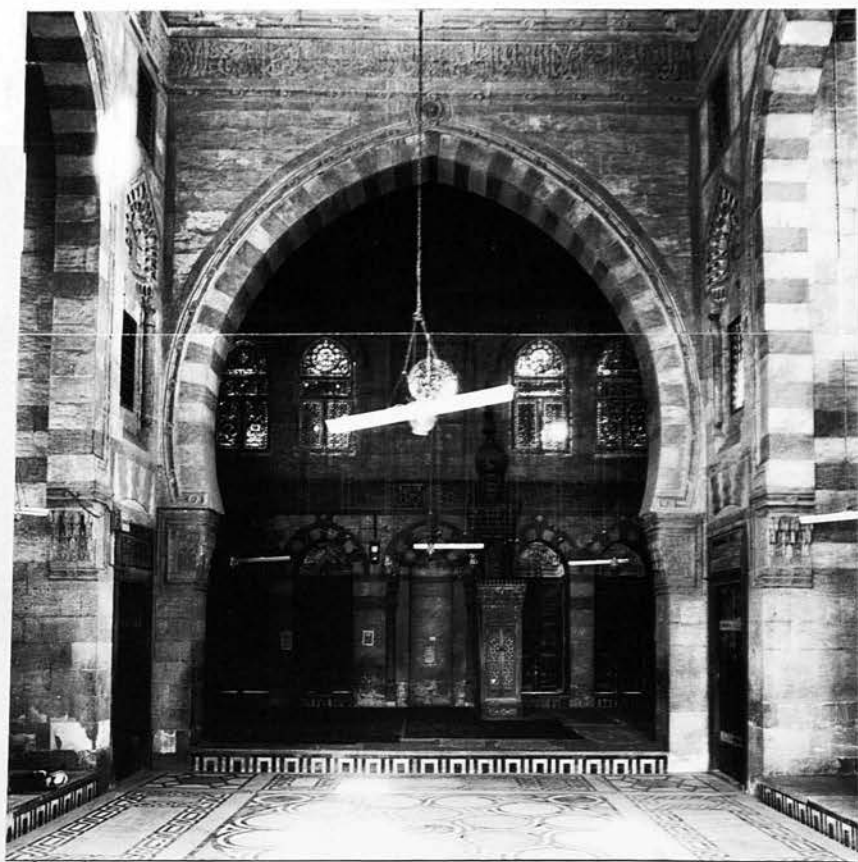


PLATE XIII.

99 Mosque and Mausoleum of Qaytbay:

The Sahn and the Qibla Iwan.

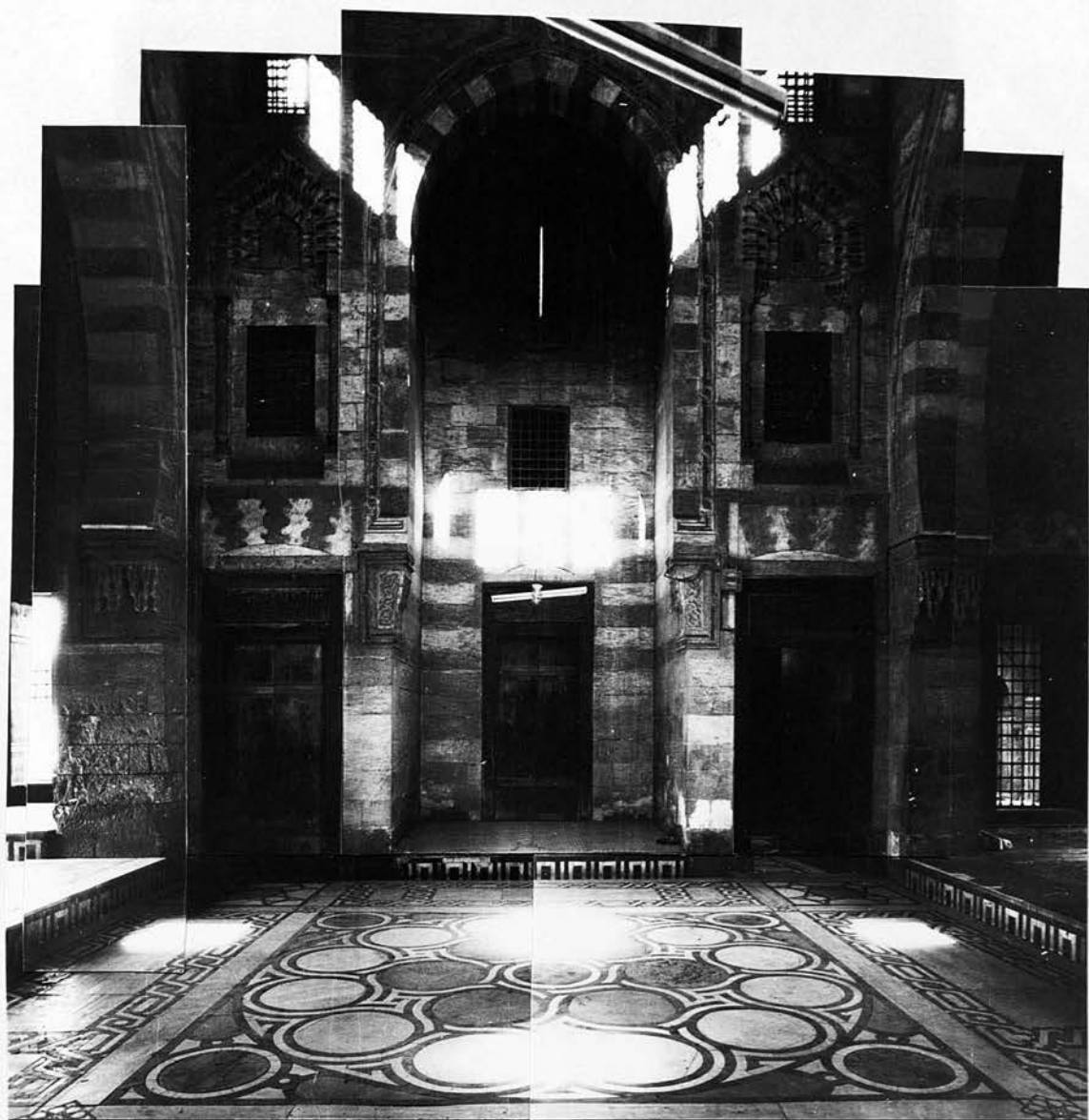


PLATE XIV.

99 Mosque and Mausoleum of Qāyrbāy: The Sahn's North Wall.

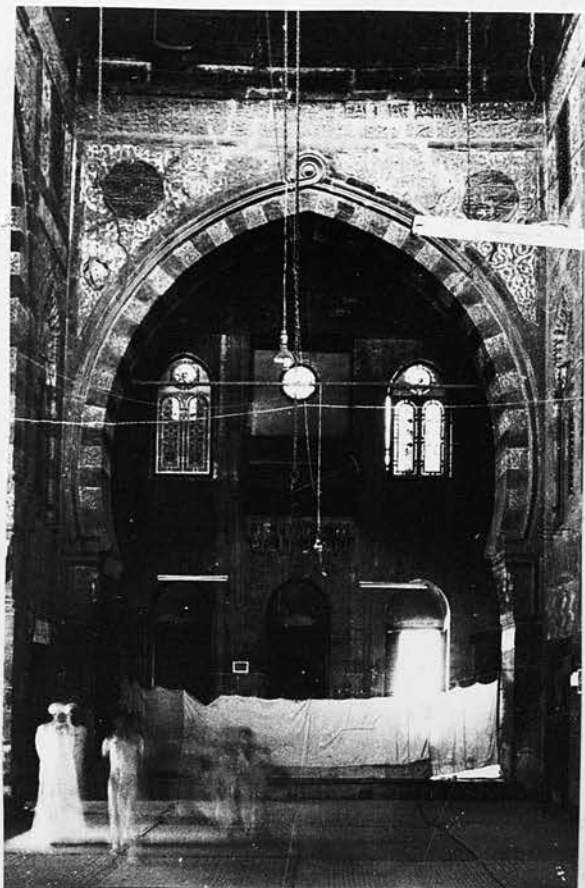


PLATE XV.

[99] Mosque and Mausoleum of Qāytbāy: Decorated engaged column to a recessed window above one of the Sahn's doors.

PLATE XVI.

[223] Mosque of Qāytbāy in Qal'et al-Kabsh: The Sahn's great arch opposite the Qibla iwan.



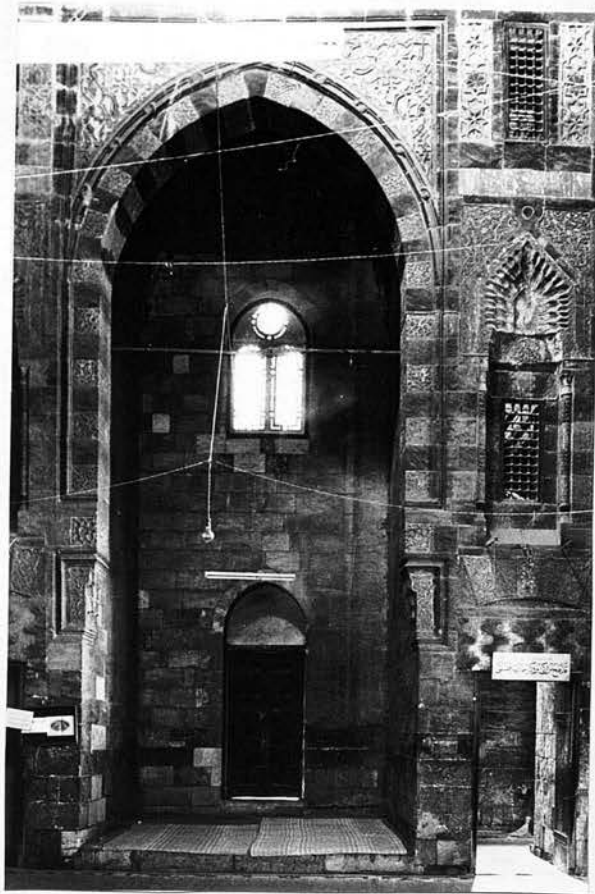


PLATE XVII.

[223] Mosque of Qāyṭbāy in
Qal'et al-Kabsh: The Sahn's
side arch in the south wall.

PLATE XVIII.

[223] Mosque of Qāyṭbāy in
Qal'et al-Kabsh: One of
eight identical panels
which flank the Sahn's
upper windows.





PLATE XIX. [223] Mosque of Qāyṭbāy in Qal'et al-Kabsh: Painted kufesque inscription surrounding the Sahn.



PLATE XX. [49] Mosque of Abū Bakr Muzhir: Part of the kufesque inscription within the recessed portal.

[49] Mosque of Abū Bakr Muzhir: Part of the kufesque inscription within the recessed portal.



PLATE XXI.

The Sabil of Qāyṭbāy: In the background is the Madrasa 'Uṭhmāniyya above the West Riwaq of al-Ḥaram al-Sharīf.



PLATE XXII.

82 Mosque of Sīdī Madyan: The arcade across the front of the Qibla iwan.

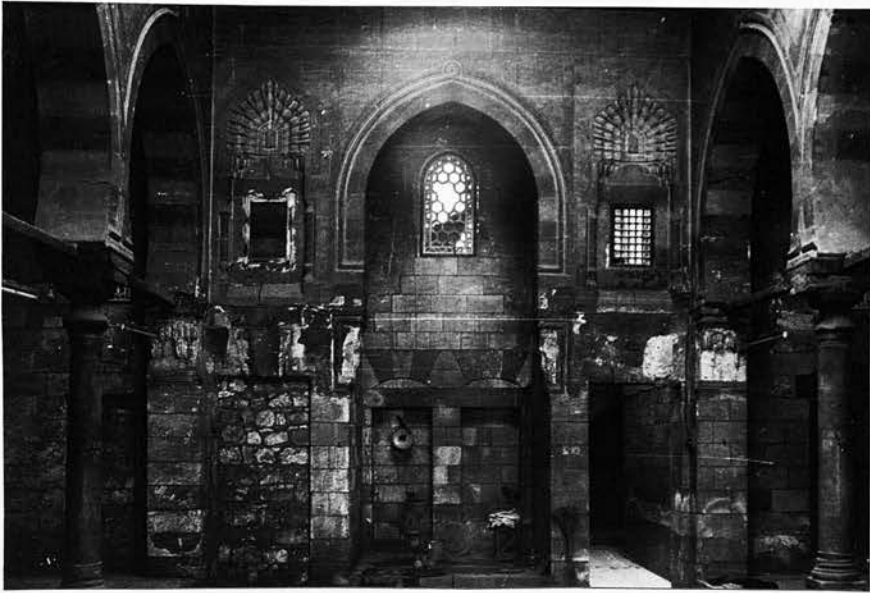
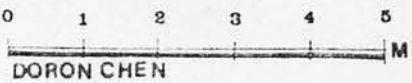


PLATE XXIII.

82 Mosque of Sidi Madyan: One of the Sahn's side walls with the arcading crossing the Qibla and its opposite iwan.



aşrafîyya THE MAIN FAÇADE



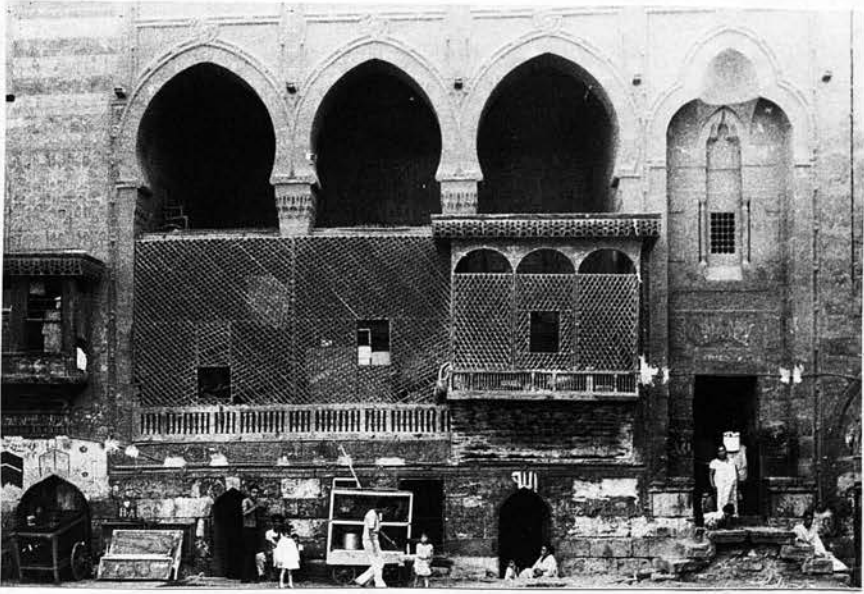


PLATE XXV.

228 House of Qāyṭbāy: Principal elevation to the internal courtyard.

PLATE XXVI.

239 Mosque of Sulṭān Shāh:

An octagonal pillar decorated
with flat-carved arabesques.



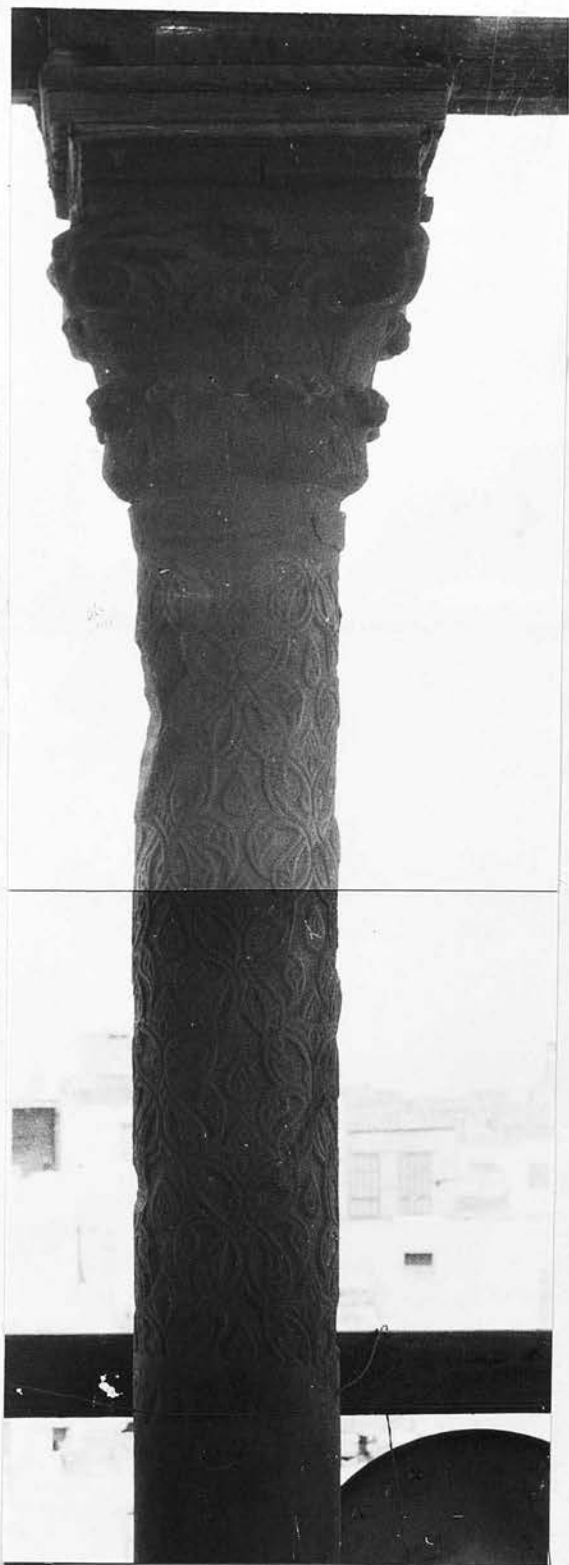
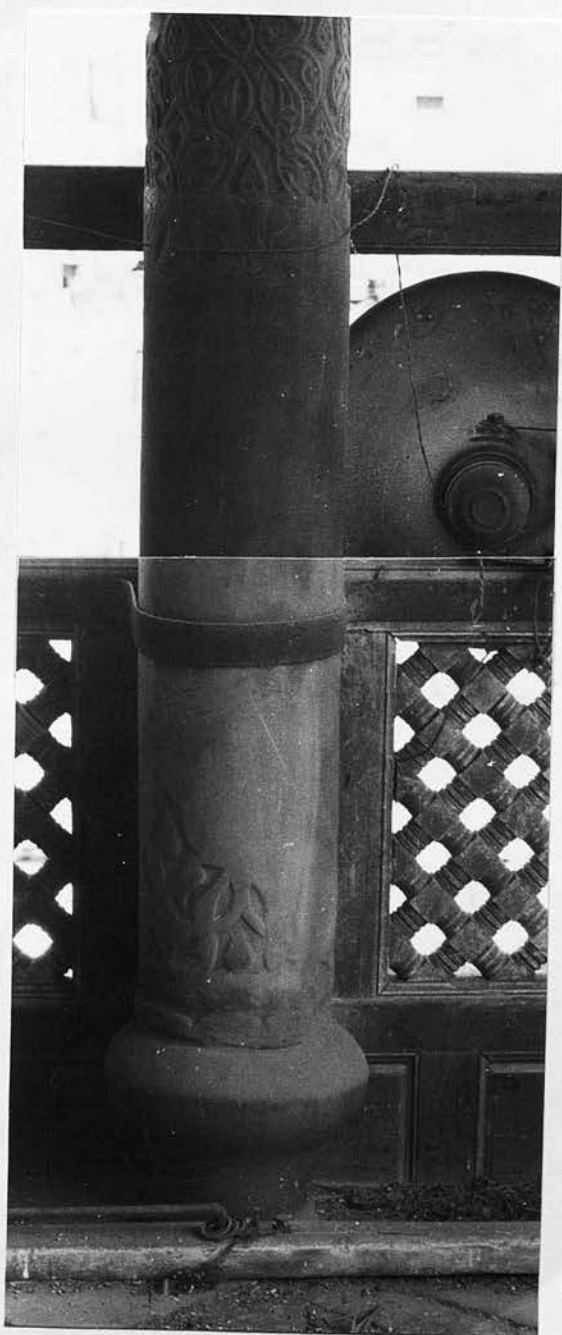
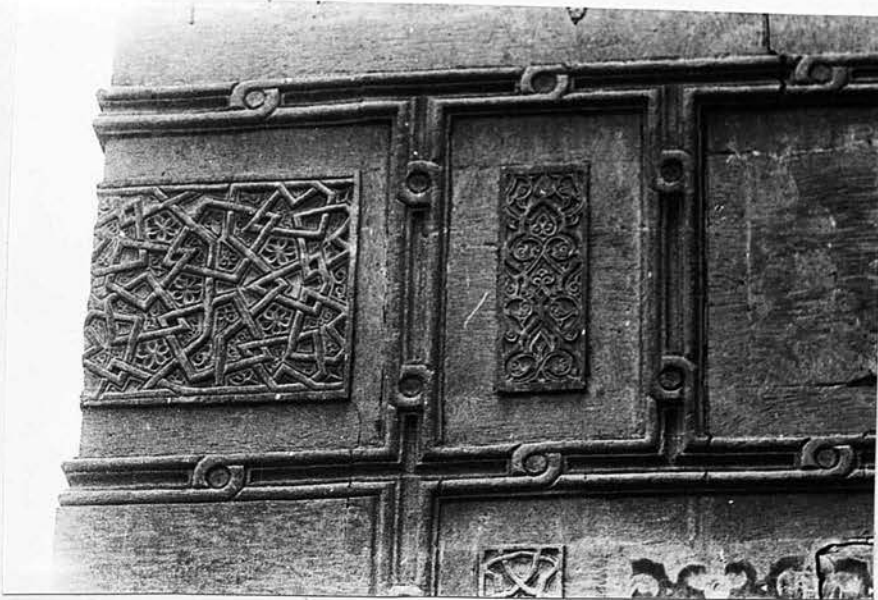


PLATE XXVII.

[99] Mosque and Mausoleum of
Qāyrbāy: One of the decorated
columns in the kuttāb of the
sabīl-kuttāb.





XVIII. [76] Sabīl-Kuttāb Qāyṭbāy, opposite al-Azhar: The panel wrapped around the Sabīl-Kuttāb's north west corner.

PLATE XXIX.

[67] Mausoleum and Sabīl-Kuttāb of al-Chūrī: Panel's wrapped around the Sabīl-Kuttāb's north west corner.



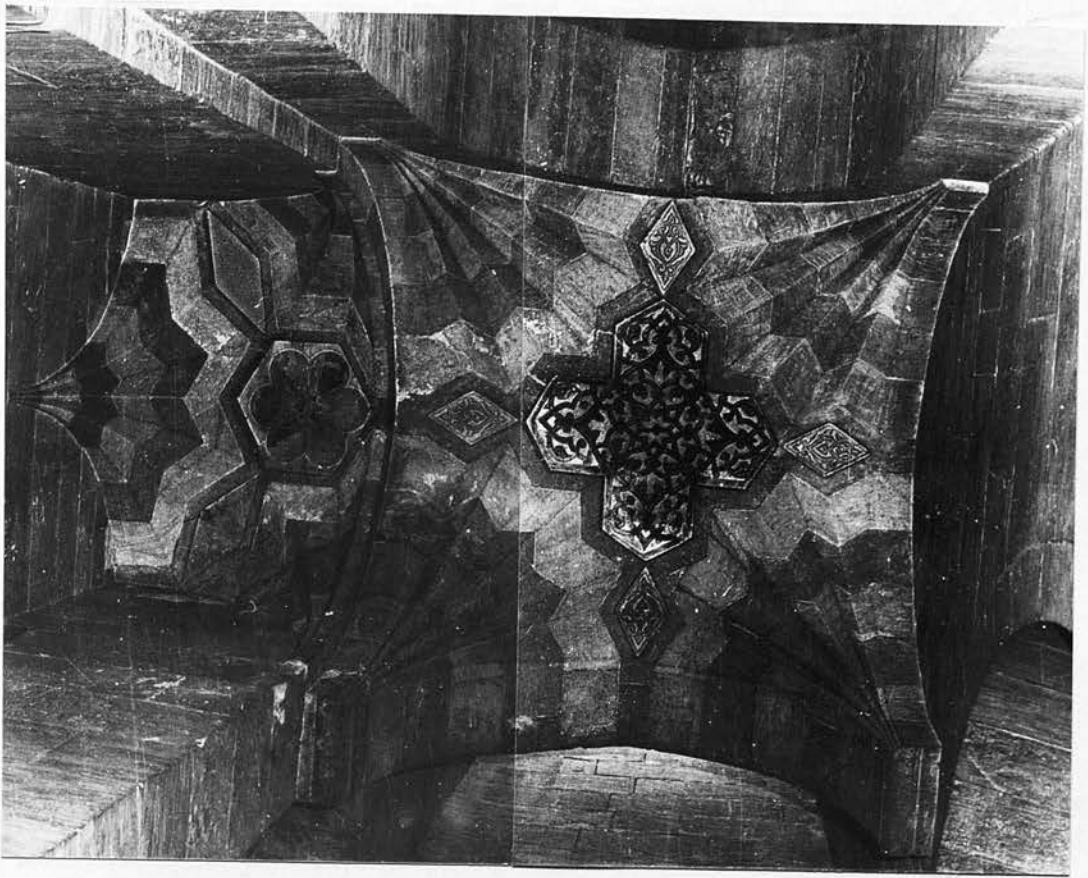


PLATE XXX. 99 Mosque and Mausoleum of Qāytbāy: The pointed cruciform centre to the Vestibule's ablaq fan vault.



PLATE XXXI. 114 Mosque of Qagmās al-Ishāqī: Detail of rectilinear muqarnas crowning an external window recess.



PLATE XXXII.

[223] Mosque of Qāyṭbāy at Qal'et al-Kabsh: Painted and inscribed shield of Qāyṭbāy in one of the spandrels of the Sahn's great arches; note also the other painted elements.

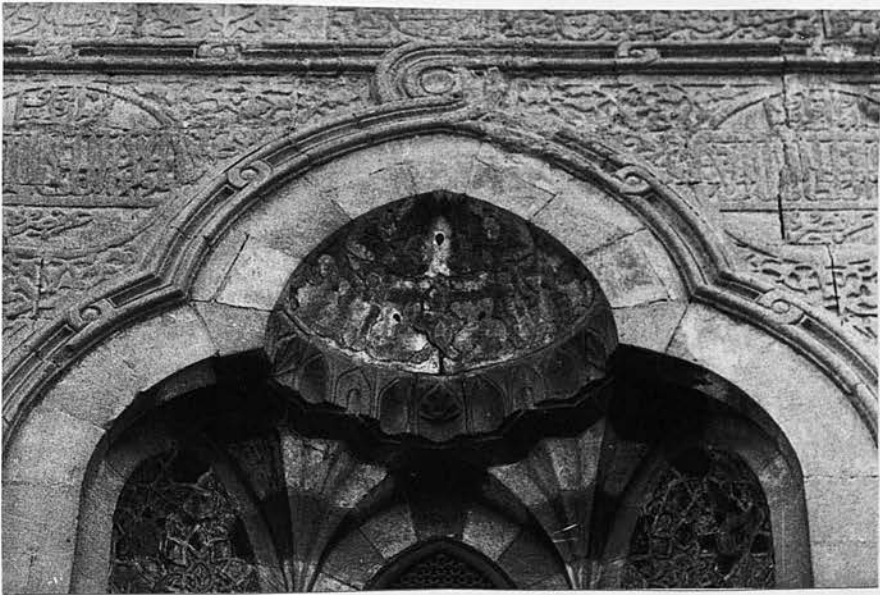


PLATE XXXIII.

[324] Sabil-Kuttāb Qāyṭbāy: The ablāq semi-dome over the recessed portal.

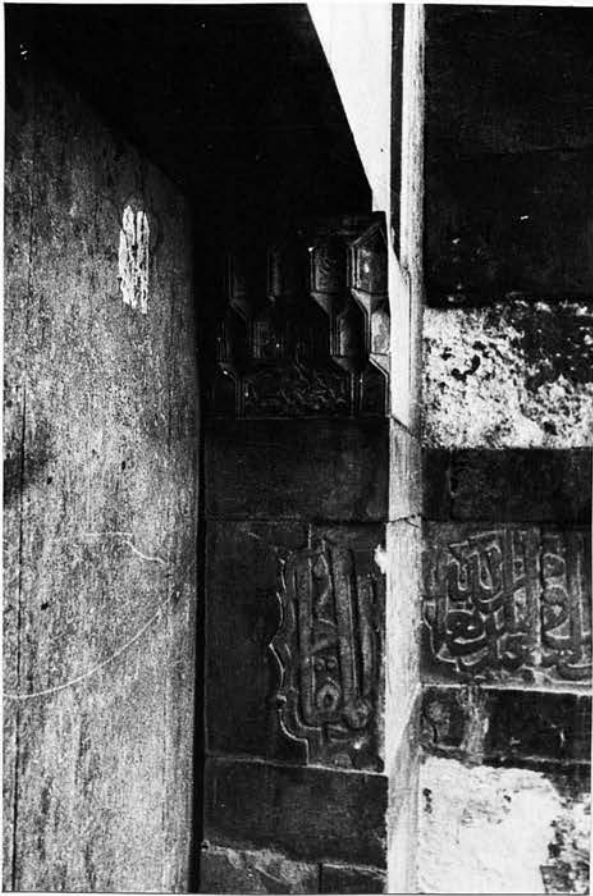


PLATE XXXIV.

324 Sabīl-Kuttāb Qāyṭbāy:

Decorated muqarnas bracket and
 inscription terminal within
 reveal of door opening.

PLATE XXXV.

324 Sabīl-Kuttāb Qāyṭbāy:

Geometric panel, with painted
 interstices, at the rear of
 the portal recess.

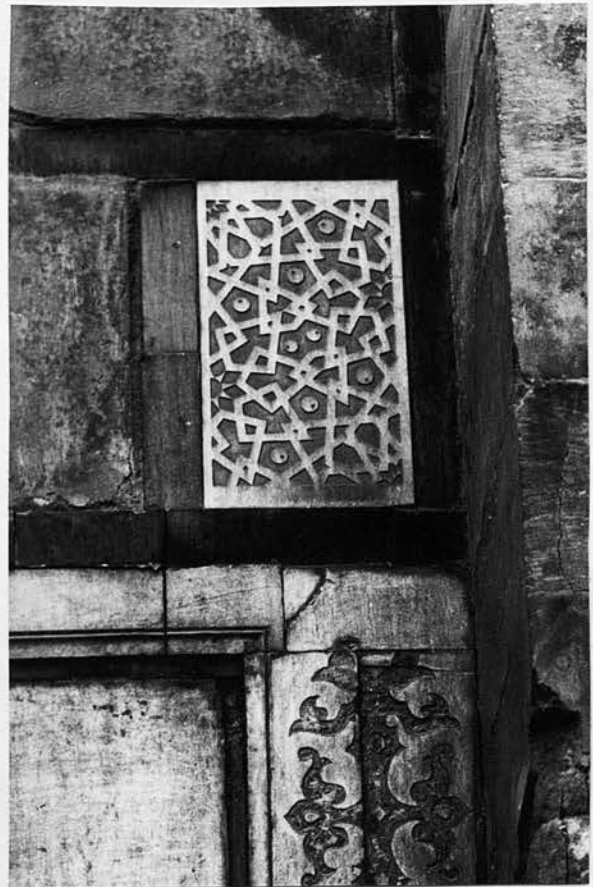




PLATE XXXVI.

[75] Wekālat Qāyṭbāy, opposite
al-Azhar: The recessed portal.

PLATE XXXVII.

[75] Wekālat Qāyṭbāy, opposite
al-Azhar: Rectilinear muqarnas
across an internal corner of
the recessed portal.

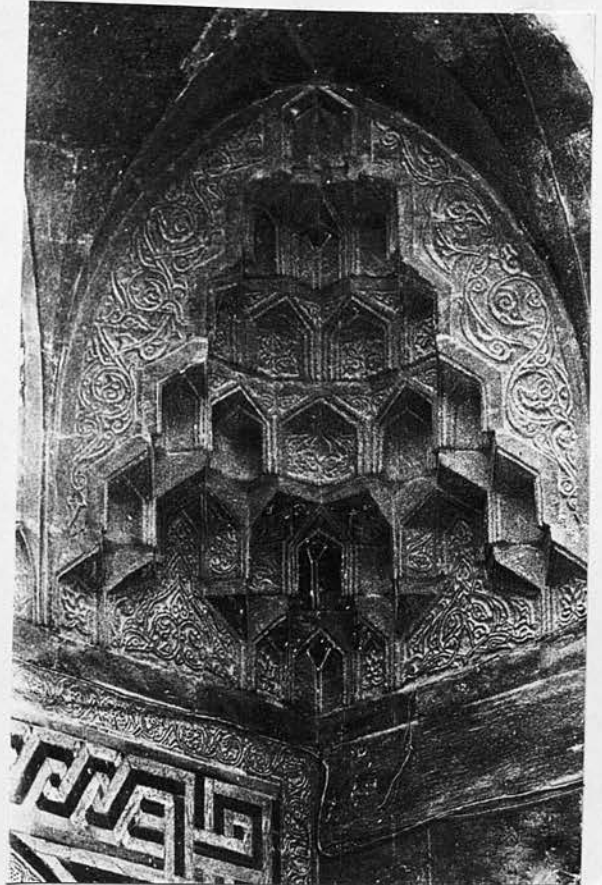




PLATE XXXVIII.

[75] Wekālat Qāyṭbāy, opposite al-Azhar: The curvilinear mugarnas on the intrados and extrados of the arched door opening at the rear of the recessed portal.

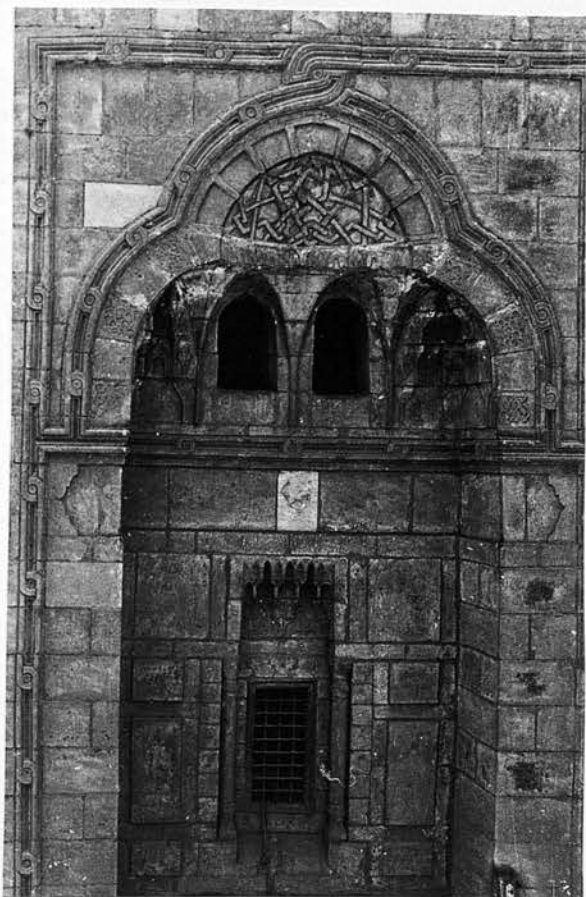


PLATE XLI.

[223] Mosque of Qāyṭbāy at
Qal'et al-Kabsh: The upper
areas of the recessed portal
in the north elevation.

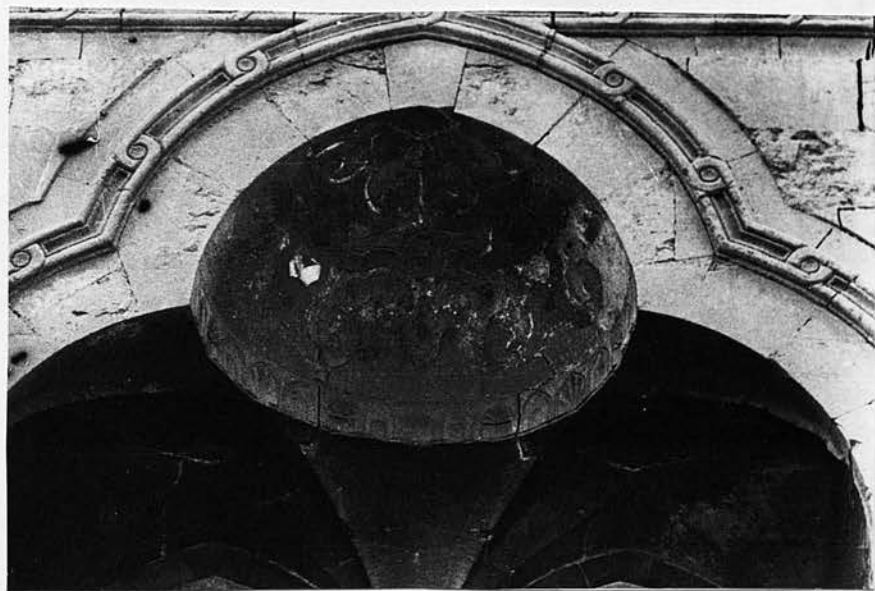


PLATE XLII.

[49] Mosque of Abū Bakr Muzhir: The ablaq semi-dome over the
recessed portal.

PLATE XLIII.

44 Mosque and Mausoleum
of an-Nāsir Muḥammad
ibn Qalā'un: A marble
inscription. (After
Bourgoin, J., Precis de

l'Art Arabe. IV, Planche

46.

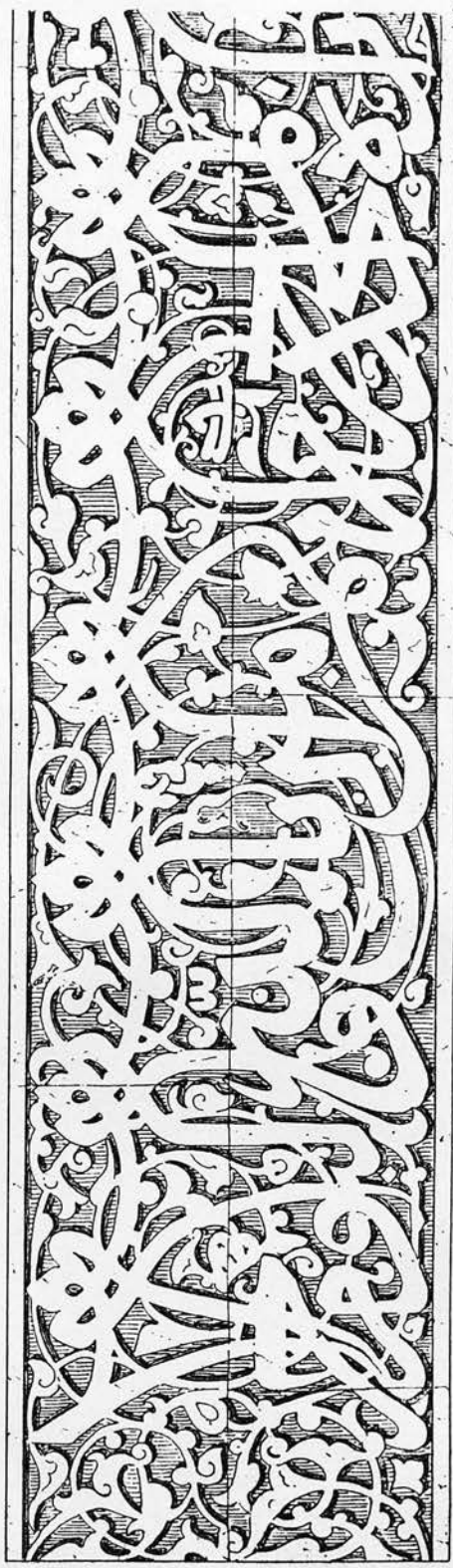
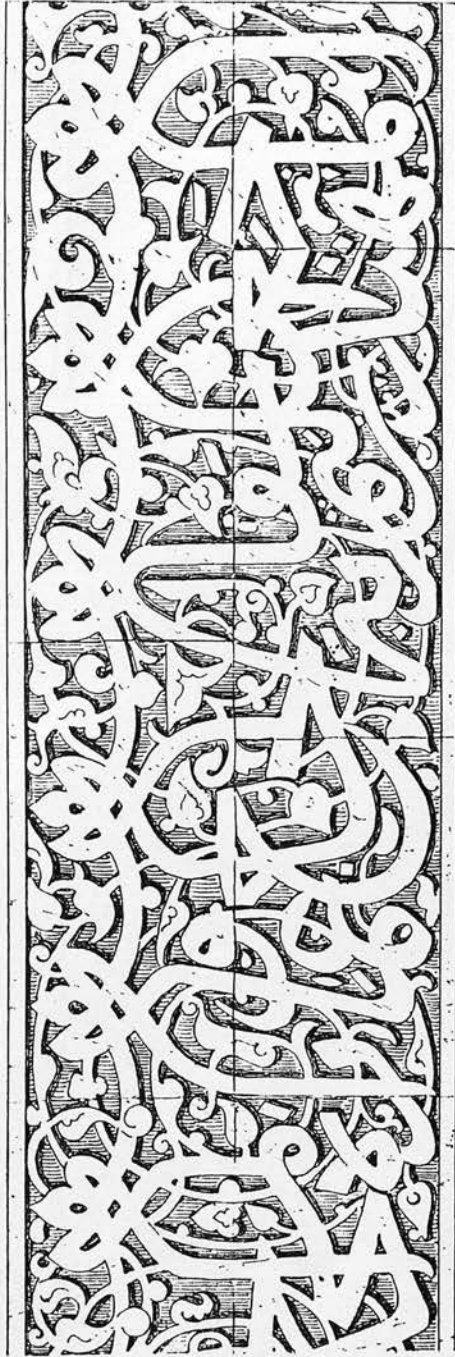




PLATE XLIV.

Candlestick presented by Qaytbay to the Shrine of the Prophet
at Medina in 887/1482-3.

PLATE XLV.

[129] Mosque and Mausoleum of Gānem al-Bahlawān: The octagonal centre in the Vestibule's ablaq fan vault. (Courtesy of the Creswell Archive, Ashmolean Museum.)



PLATE XLVI.

[129] Mosque and Mausoleum of Gānem al-Bahlawān: A decorated panel in the rear wall of the recessed portal.

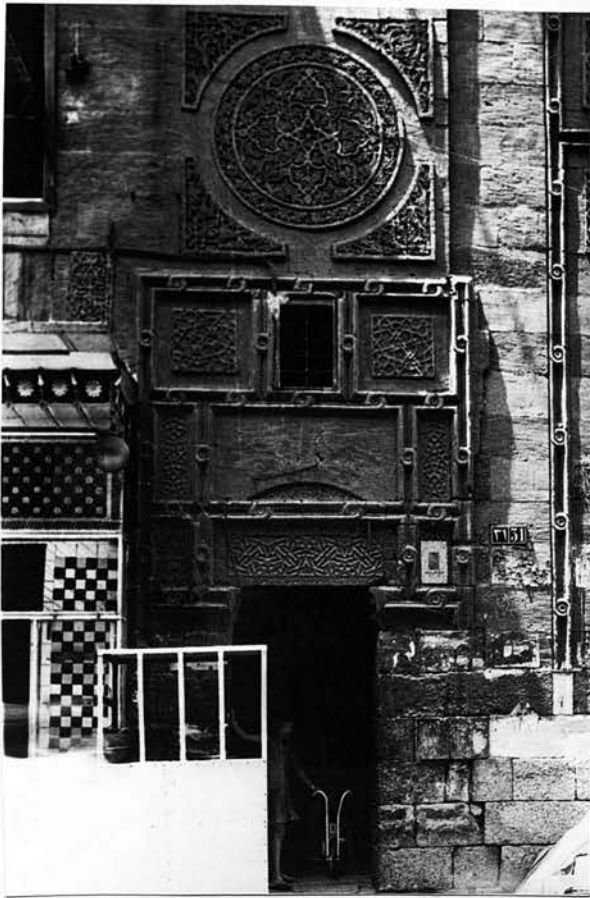


PLATE XLVII.

75 Wekālat Qāytbāy, opposite
al-Azhar: The north west entrance.

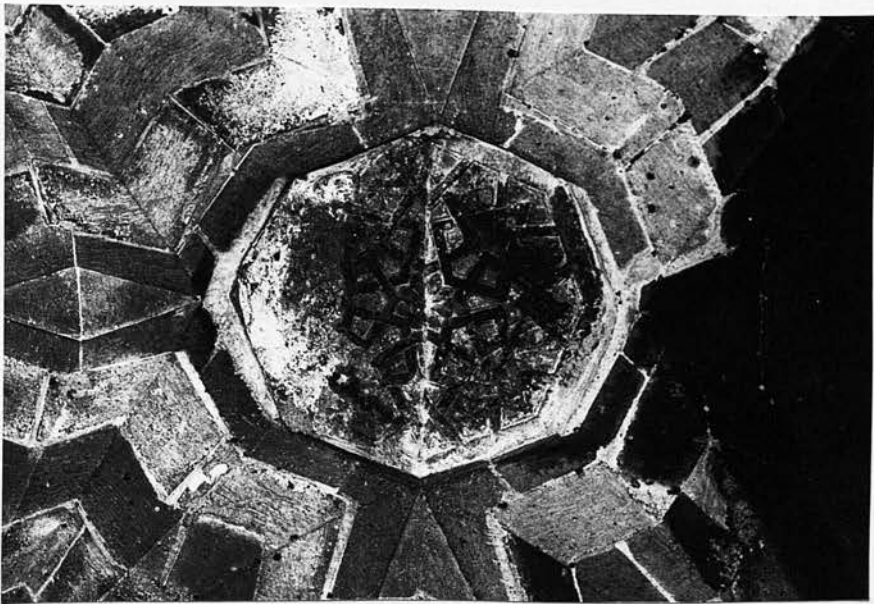


PLATE XLVIII.

75 Wekālat Qāytbāy, opposite al-Azhar: The irregular octagonal
centre in the entrance's ablaq fan vault.



PLATE XLIX.

114 Mosque of Qagmās al-Ishāqī: Joggled cill course showing the three basic decorative types; geometric, arabesque and chinoiserie.

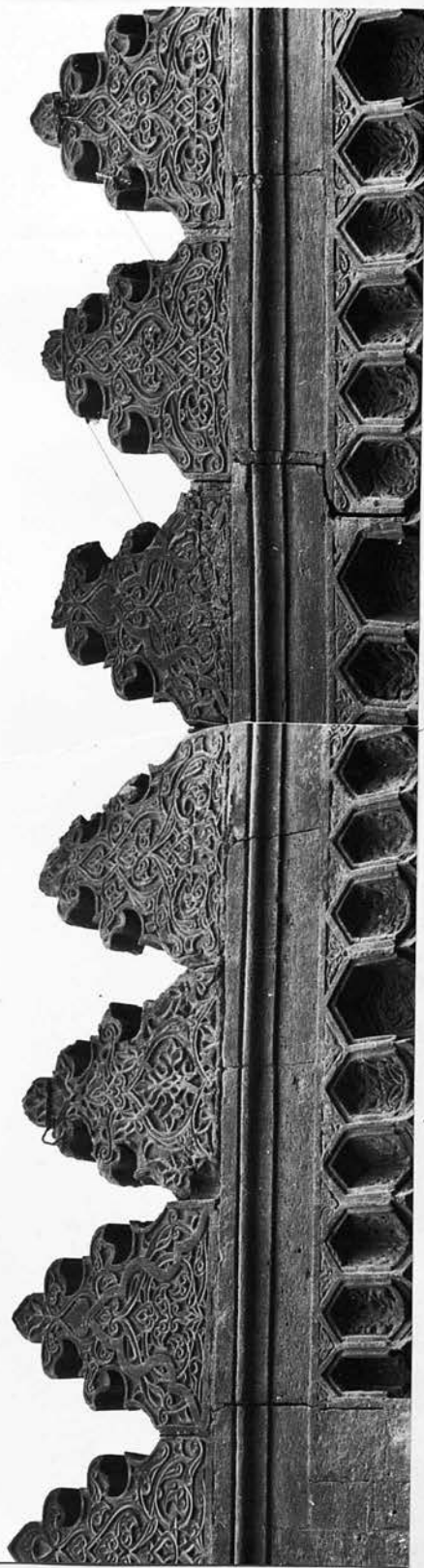


PLATE L.

[129] Mosque and Mausoleum of Gānem al-Bahlawān: The decorated cresting along the wallhead showing three types of decoration; arabesque, arabesque and ribbon development, and chinoiserie combined with arabesques.



PLATE LI.

[149] Khānaqāh of Farag ibn Barqūq: Mastaba to the recessed south west door in the Sahn outlined by a simple moulding.



PLATE LII.

[149] Khānaqāh of Farag ibn Barqūq: Termination of mastaba's moulding directly below the recess' side wall.



PLATE LIII.

Al-Ashrafiyya: Detail of the eroded lintel over the Sahn's
north west doorway.



PLATE LIV.

[75] Wekālat Qāyṭbāy, opposite al-Azhar: Detail of north west door's
lintel and flanking panel.



PLATE LV.

[49] Mosque of Abū Bakr Muzhir: The decorated lintel and side panels in the Mosque's second recessed portal.

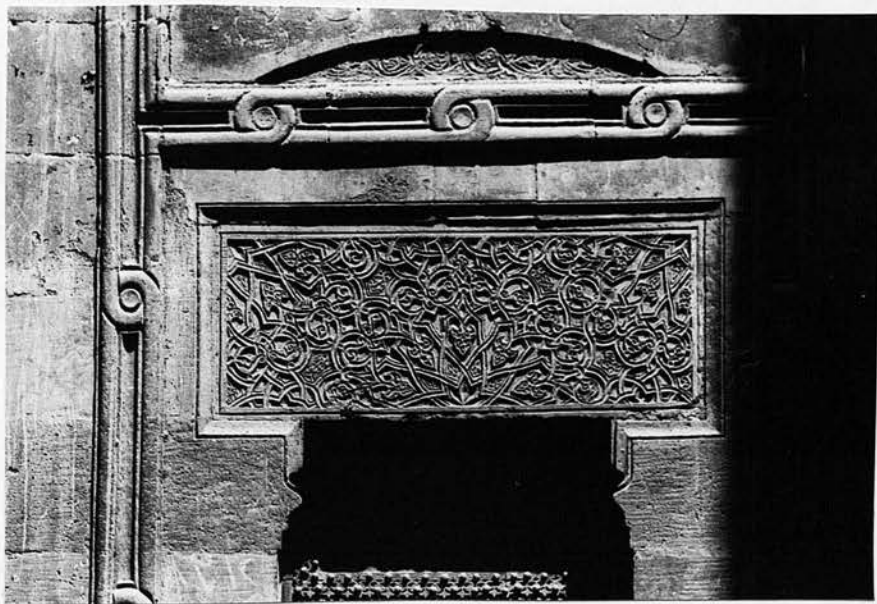


PLATE LVI.

[114] Mosque of Qagmās al-Ishāqī: The decorated lintel over the door of the sabīl-kuttāb.



PLATE LVII.

114 Mosque of Qagmās al-Ishāqī:
Decorated wall panel in the īwān
opposite the Qibla īwān.

PLATE LVIII. ~~ibay: One~~

Sabil of Qāytbāy: One of six
reworked spandrels.



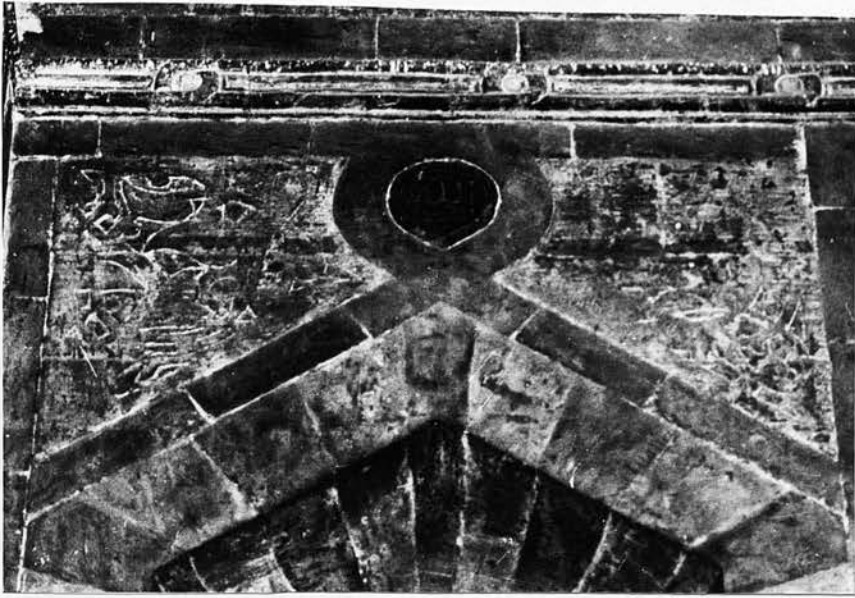


PLATE LIX.

[49] Mosque of Abū Bakr Muzhir: The white outlines are the initial cuts for the intended decoration in the spandrels to the Sahn's north west keel arch.



PLATE LX.

[216] Mosque of Timrāz al-Ahmadi:
al-Ahmadi (?): The initial cutting
laying out a panel's decoration.

PLATE LXI.

[216] Mosque of Timrāz
al-Ahmadi (?): The completed
panel paired with the panel
illustrated in Plate LX.





PLATE LXII.

[223] Mosque of Qāyrbāy at
Qal'et al-Kabsh: The principal
recessed portal.



PLATE LXIII.

[223] Mosque of Qāyrbāy at Qal'et al-Kabsh: Detail of the joggling
occurring in alternate stone courses up the outside of the principal
recessed portal's moulded frame.



PLATE LXIV.

[99] Mosque and Mausoleum of Qāyṭbāy: One of the decorated stucco tympana over the windows of the Qibla īwān and the īwān opposite.

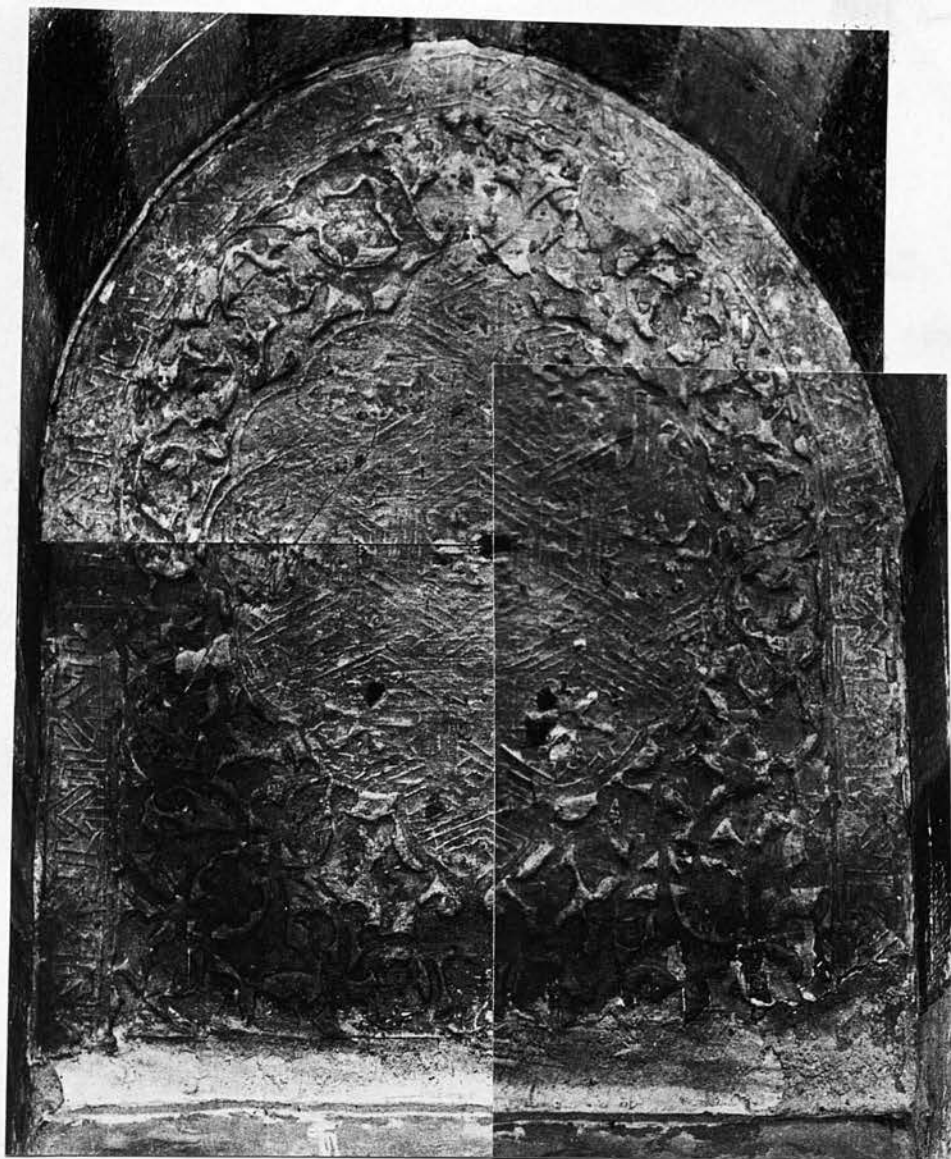


PLATE LXV.

519 Mosque of Qaytbay on Roda; One of the stucco tympana
in the Qibla iwan.

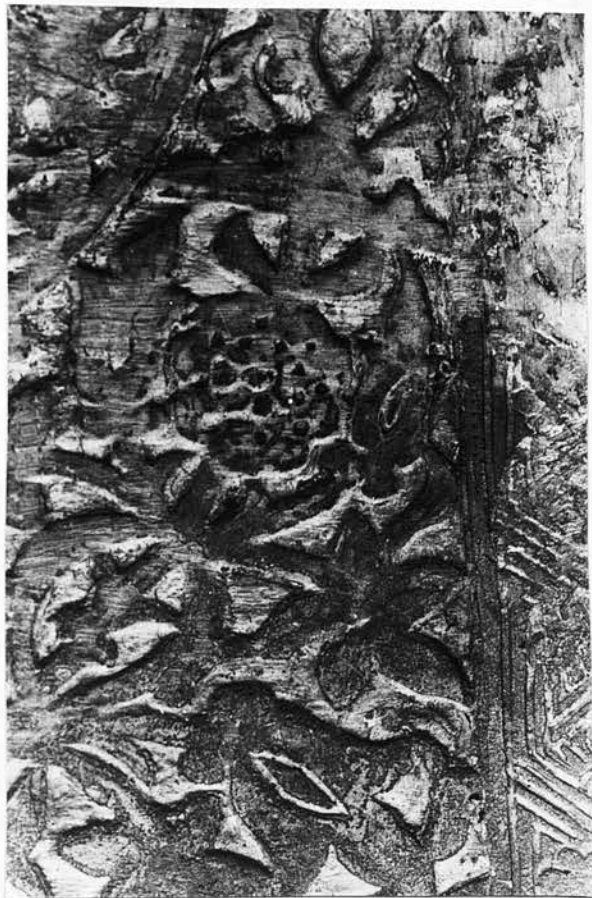


PLATE LXVI.

519 Mosque of Qaytbay on Rōda:

Detail of one of the stucco
tympana in the Qibla iwan.



PLATE LXVII.

192 Zāwiyat Fayrūz: Recessed
window with a commonplace
decorated lintel.

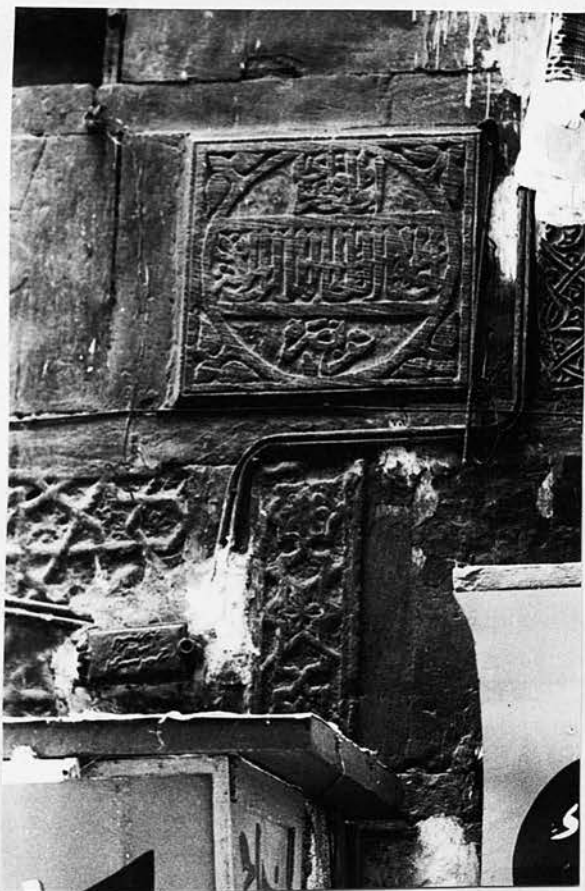


PLATE LXVIII.

[60] Mosque of al-Qāḍī 'Abd
al-Bāsīt: Detail of a common-
place decorated window lintel.

PLATE LXIX.

[75] Wekālat Qāyṭbāy, opposite
al-Azhar: A shield of Qāyṭbāy,
and below it a panel which is
a variation of the panel
illustrated in Plate XLIII.



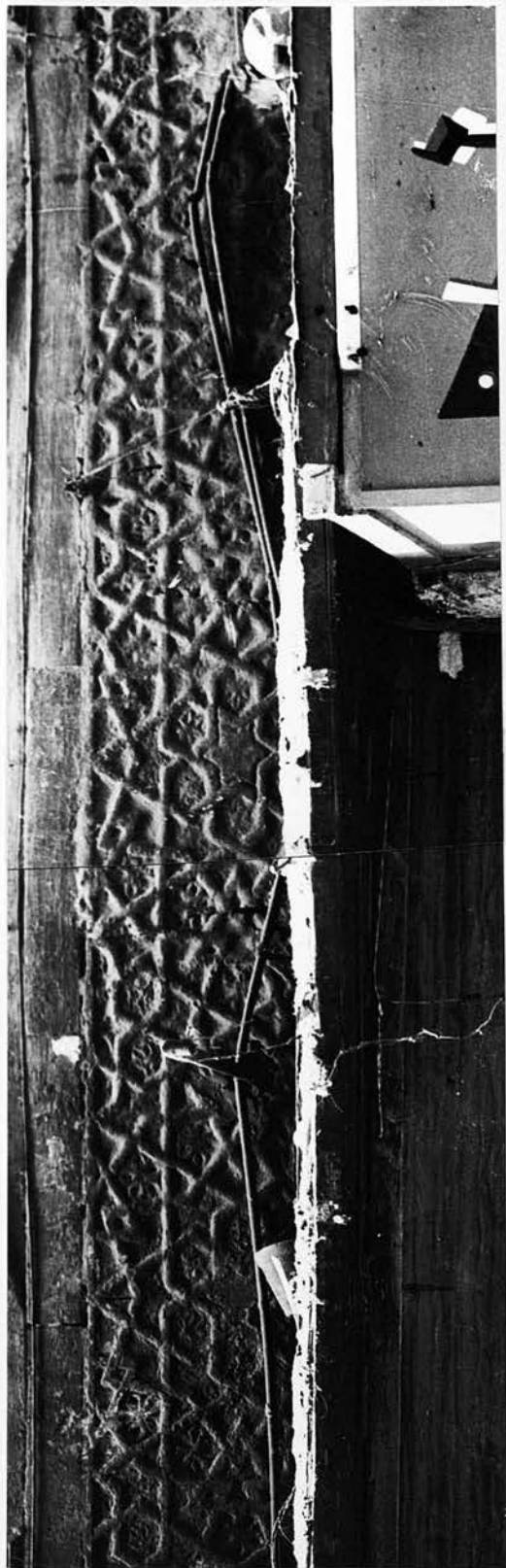


PLATE LXX.

[75] Wekalat Qāyṭbāy, opposite al-Azhar: A composite lintel, decorated with a geometric design, over one of the shopping booths along the Wekalat's frontage.

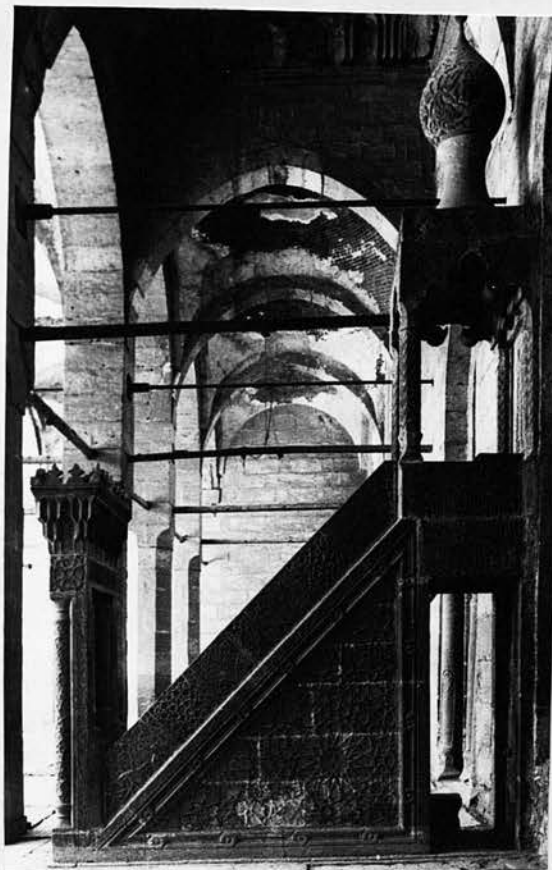


PLATE LXXI.

149 Minbar of Qāytbāy: A general view showing the Gateway, and the internal staircase rising up to the Canopy with its onion shaped dome.

PLATE LXXII.

149 Minbar of Qāytbāy: The right hand side.



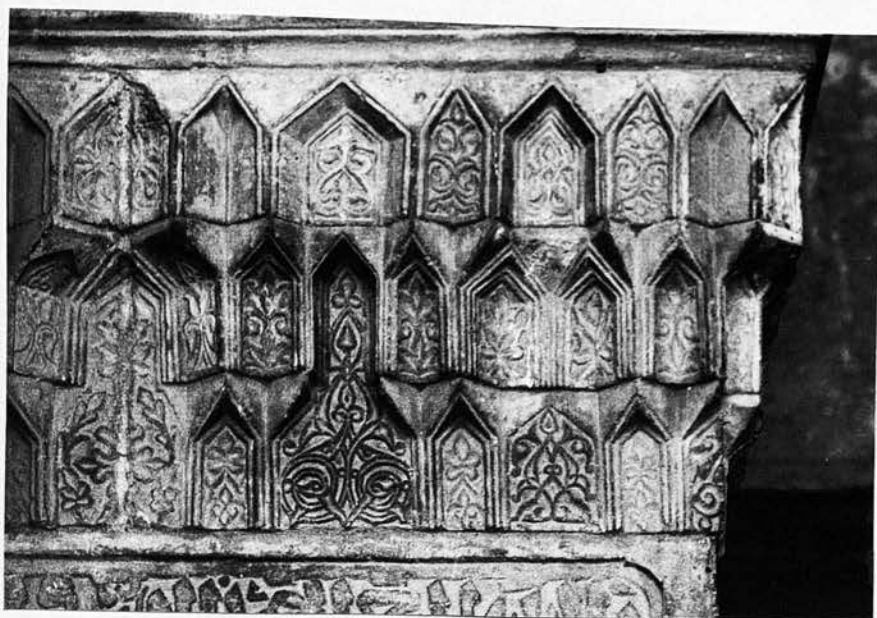


PLATE LXXIII.

[149] Minbar of Qāyrbāy: Detail of the decorated rectilinear muqarnas along the front of the Gateway.

PLATE LXXIV.

[149] Minbar of Qāyrbāy: The decorated rectilinear muqarnas along the side of the Gateway, and below them a geometric panel.





PLATE LXXV.

74 Drinking Trough of Qāyṭbāy,
opposite al-Azhar: Detail typical
of the internal wall decoration;
note, the cup design at bottom
centre of the recess's head.

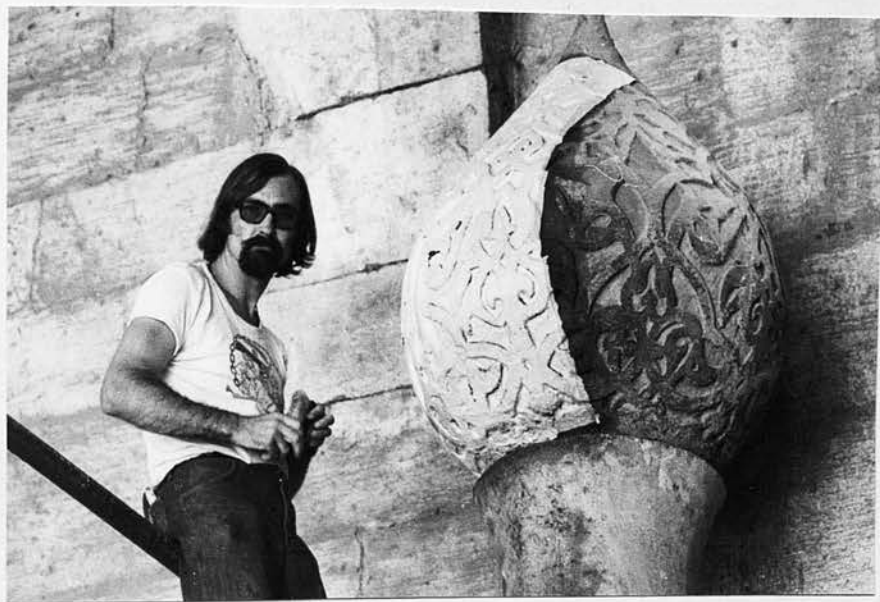


PLATE LXXVI.

149 Minbar of Qāyṭbāy: Detail of the onion shaped dome while it
was being squeezed.

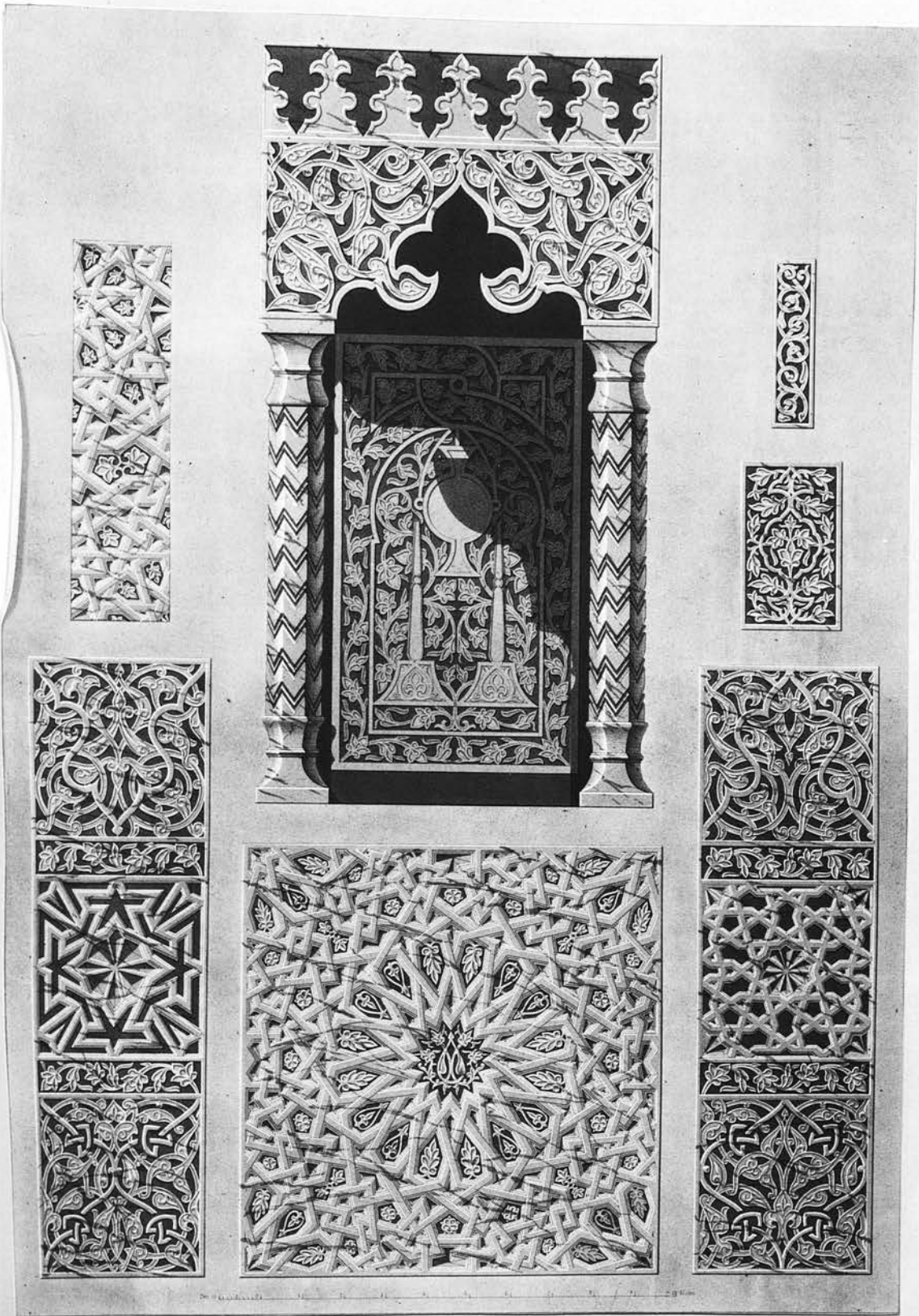


PLATE LXXVII.

[149] Minbar of Qāytbāy: Details of the Minbar. (After Prisse
d'Avennes, A., L'Art Arab. Pl. XLIX.)



PLATE LXXVIII.

[119] Mosque of Gani Bek,
830/1426-27: Recessed Portal.

PLATE LXXIX.

[204] Mosque of al-Qadī
Yaḥyā, 856/1452: Recessed
Portal.





PLATE LXXX.

Al-Azhar Mosque, (Qāyṭbāy Entrance)

873/1469: Recessed Portal.

PLATE LXXXI.

[99] Mosque and Mausoleum of
Qāyṭbāy, 877-79/1472-74: The
principal Recessed Portal.

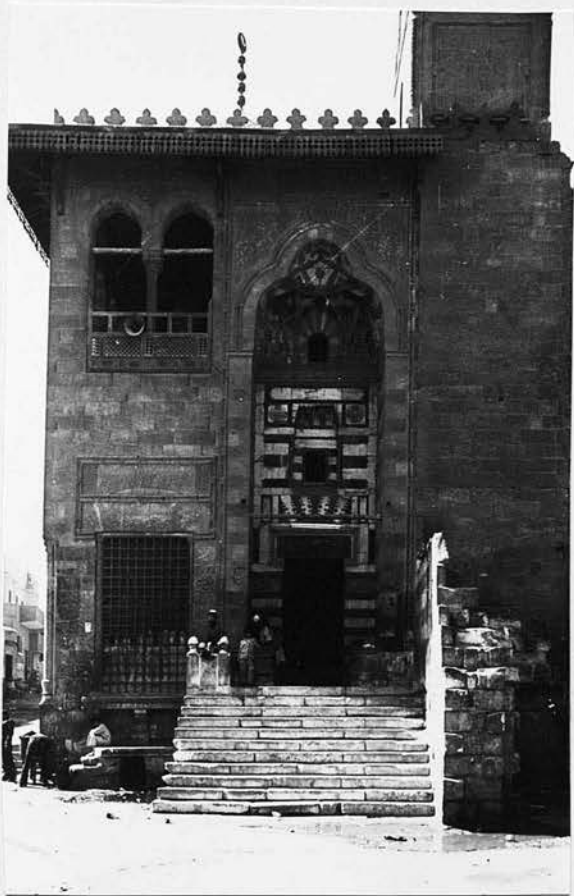




PLATE LXXXII.

[99] Mosque and Mausoleum of
Qāyṭbāy, 877-79/1472-74: Recessed
Portal leading to the Mausoleum.

PLATE LXXXIII.

[101] Maq^cad Qāyṭbāy, 879/1474:
Recessed Portal.

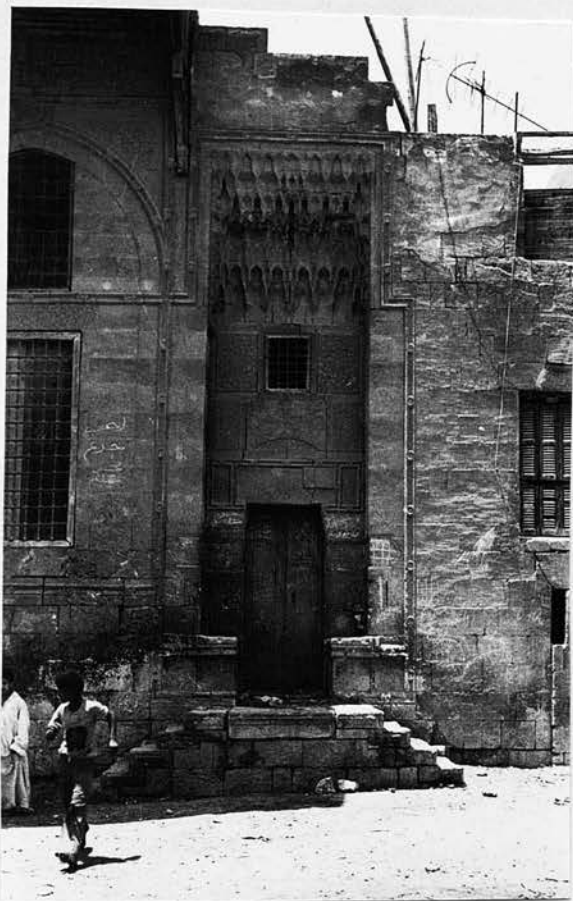




PLATE LXXXIV.

[104] Rab^c Qāyṭbāy, 879/1474:

Recessed Portal.



PLATE LXXXV.

[76] Sabīl-Kuttāb Qāyṭbāy,
opposite al-Azhar, 881/1477:

Recessed Portal.



PLATE LXXXVI.

324 Sabil-Kuttāb Qāyrbāy,

884/1479: Recessed Portal.

PLATE LXXXVII.

114 Mosque of Qagmās
al-Ishāqī, 885-86/1480-81:

Recessed Portal.





PLATE LXXXVIII.

[228] House of Qāyṭbāy, 890/1485:

Principal Recessed Portal.

PLATE LXXXIX.

[228] House of Qāyṭbāy, 890/
1485: Secondary Recessed Portal.





PLATE XC.

[235] House of Aḥmad Katkhudā
ar-Razzāz, before 900/1494-95:
Recessed Portal built by Qāyṭbāy.

PLATE XCI.

[211] Mosque of Azbak al-Yūsufī,
900/1494-95: Recessed Portal.

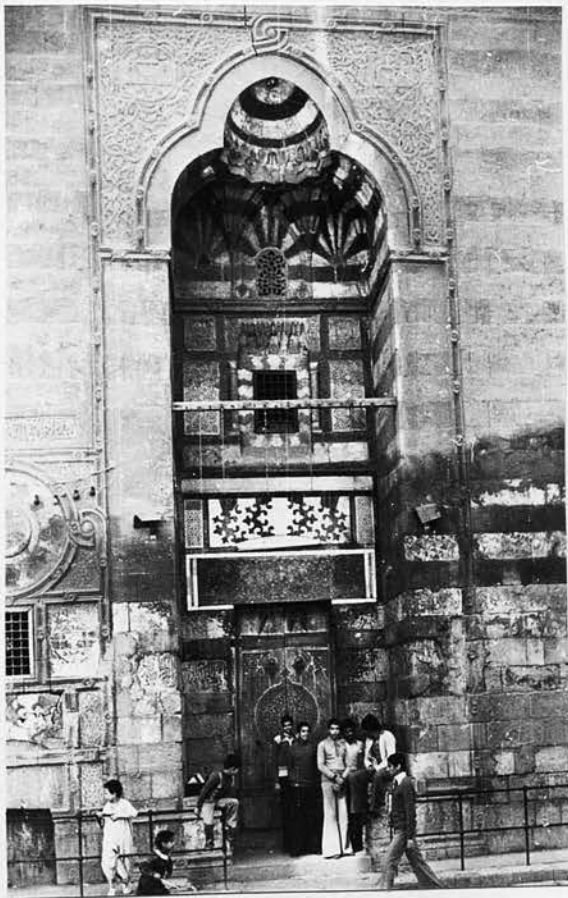




PLATE XCII.

Mosque of Princess ^cAsalbay, at

Medinat al-Fayyum, 905/1499:

Recessed Portal.

PLATE XCIII.

322 Remains of Palace
of Qānsūh al-Chūrī,

906-22/1501-16:

Recessed Portal.

(Detail from Tarchi, U.,

L'Architettura e l'Arte

Musulmana, Tav. 115.)

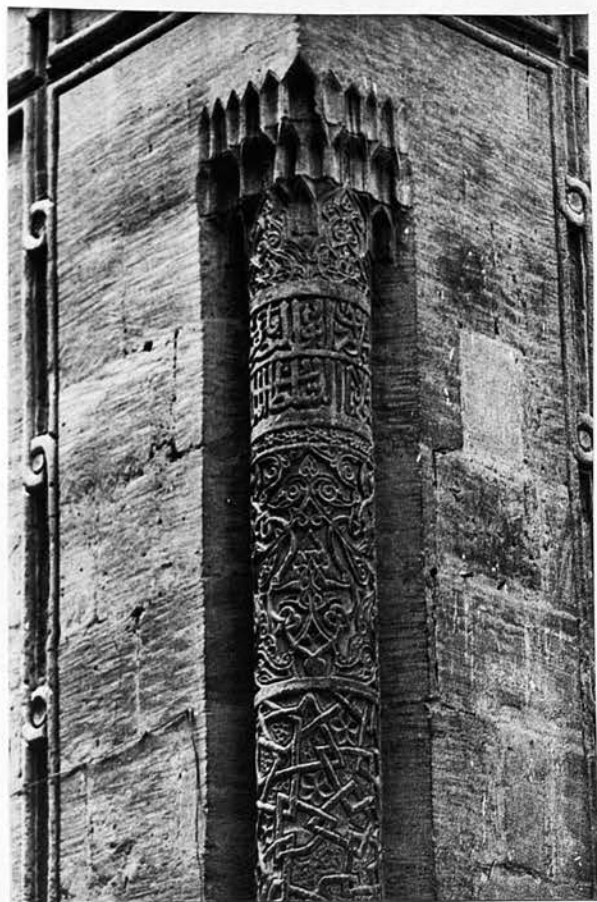


PLATE XCIV.

[76] Sabīl-Kuttāb Qāyṭbāy, opposite al-Azhar, 881/1477: Upper portions of the engaged column on the north west corner.

PLATE XCV.

378 Mosque of Sayyida ^CA'isha,
1175/1762: Engaged column on the
south west corner.



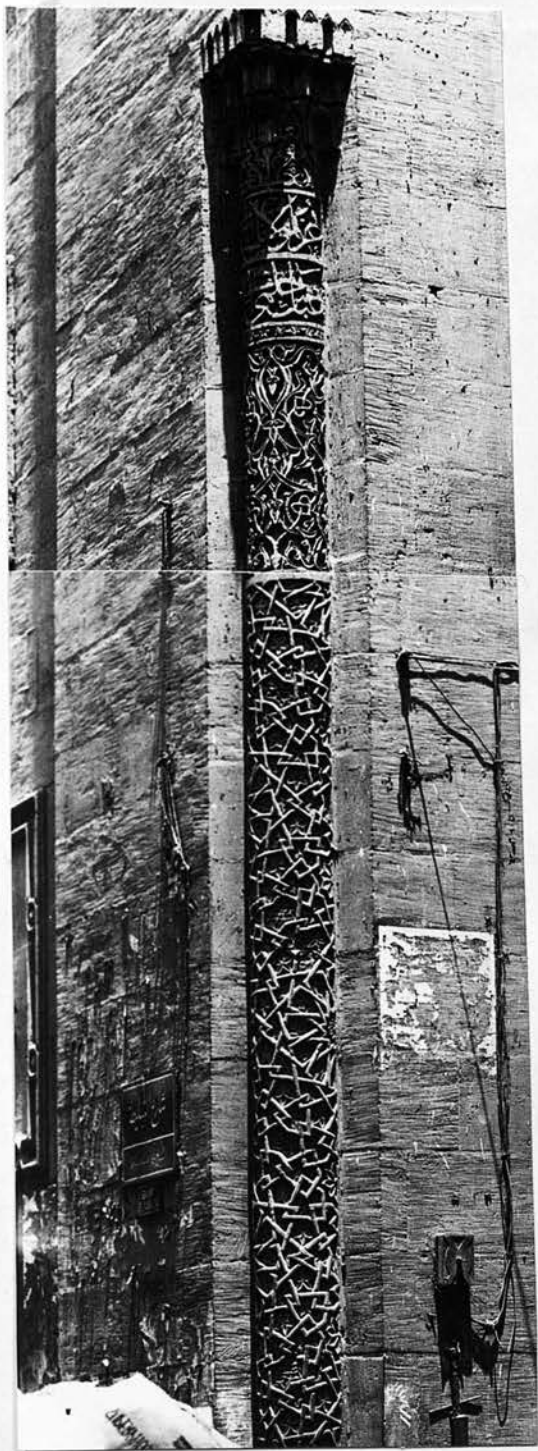


PLATE XCVI.

97 Al-Azhar Mosque, 13th/19th
cent.: Engaged column on south
west corner, repeated once on
the west elevation and once on
the south elevation.



PLATE XCVII.

[75] Wekālat Qāyṭbāy, opposite al-Azhar, 882/1477: Composite lintel over one of the shopping booths along the Wekālat's frontage.



PLATE XCVIII.

[75] Mekālat Qāytbāy, opposite al-Azhar, 882/1477: Composite relieving arch over one of the shopping booths along the Mekālat's frontage.

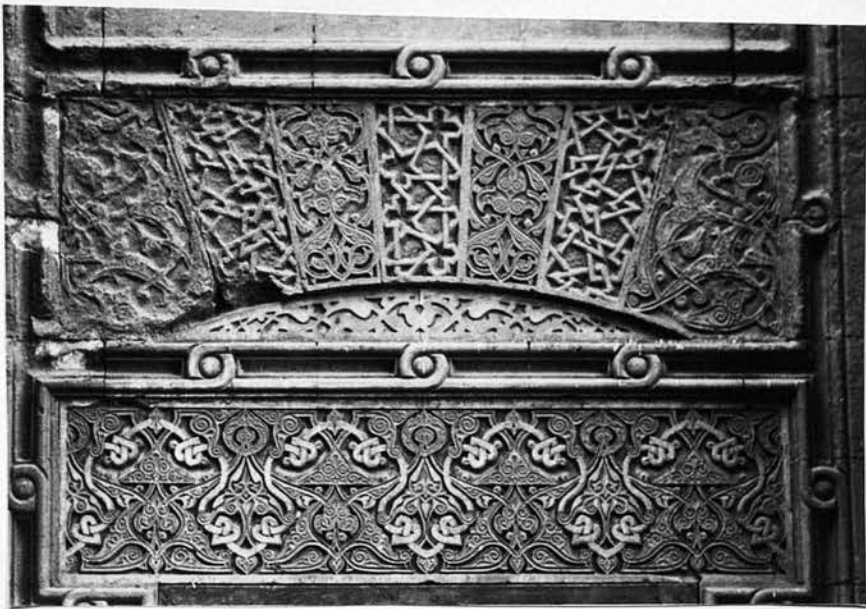
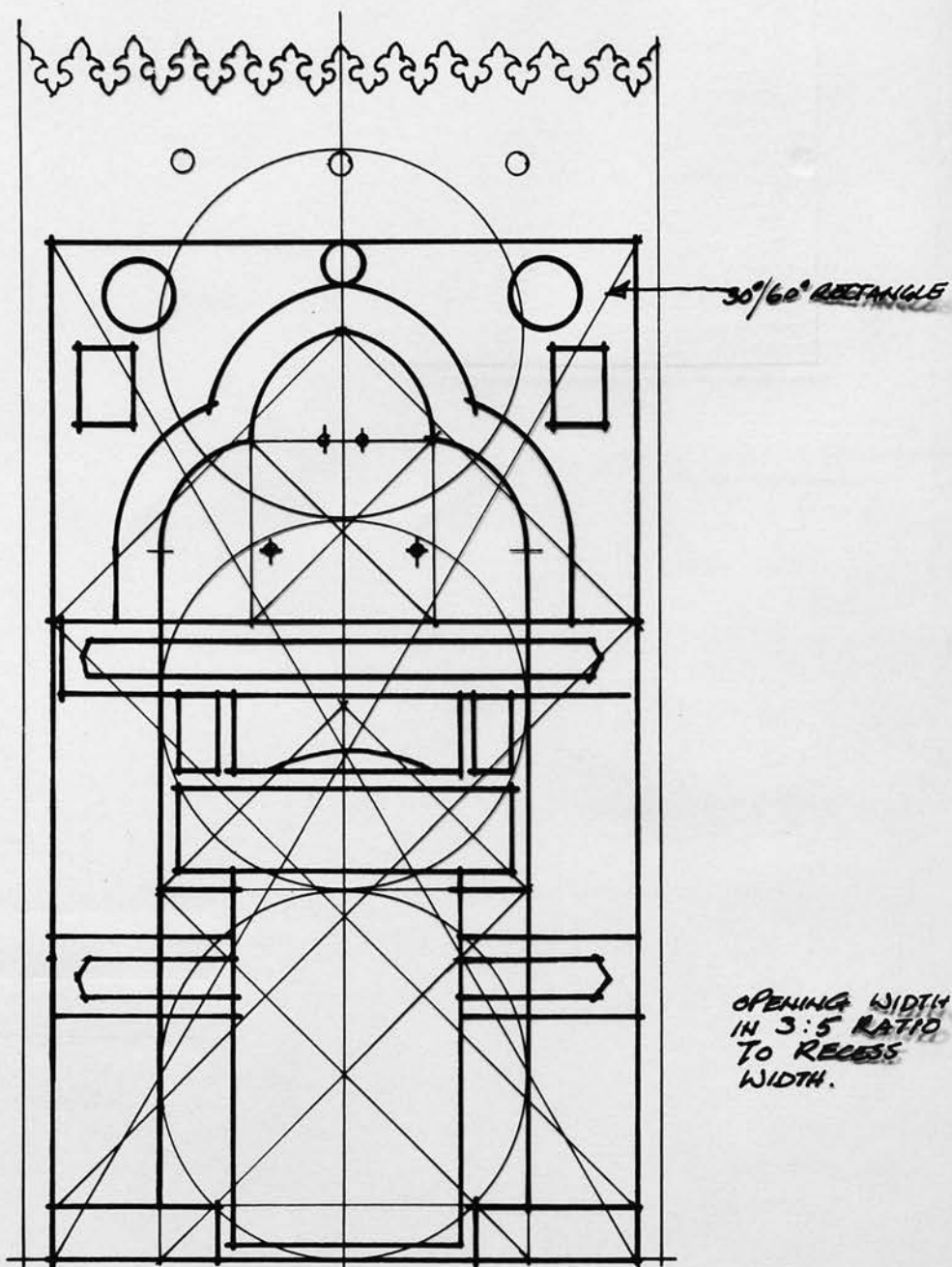


PLATE IC.

Mosque of Sīdī al-Rafā'ī, 1329/1911: Decorated lintel and relieving arch.

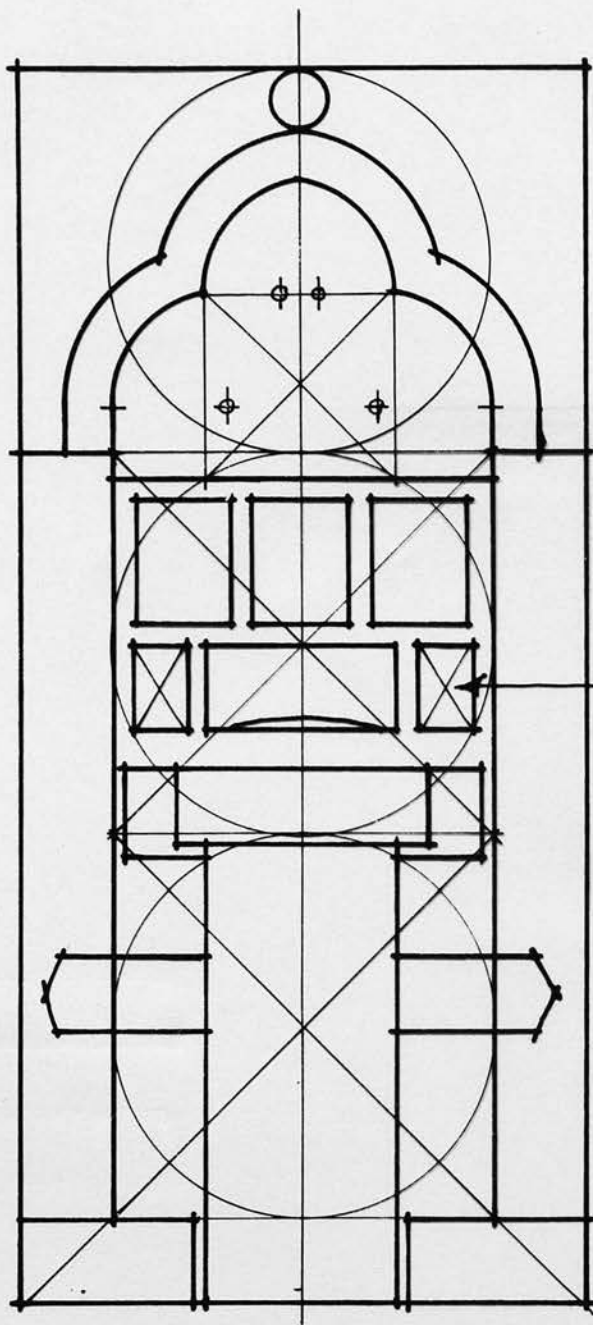
EDINBURGH COLLEGE OF ARTS
HERIOT WATT UNIVERSITY
DEPARTMENT OF TOWN PLANNING
ACCESSION No. 231880
CLASS REF
SUPPLIER
PRICE



97 AL-AZHAR MOSQUE - SĀHIBĀY ENTRANCE 873/1469.

A

FROM WALLS, A. G., AN ATTEMPTED
RECONSTRUCTION 1000
Ph.D. THESIS, OCT. '79.



MIGARNAS BELOW
ARCH COMPARTMENT.

2

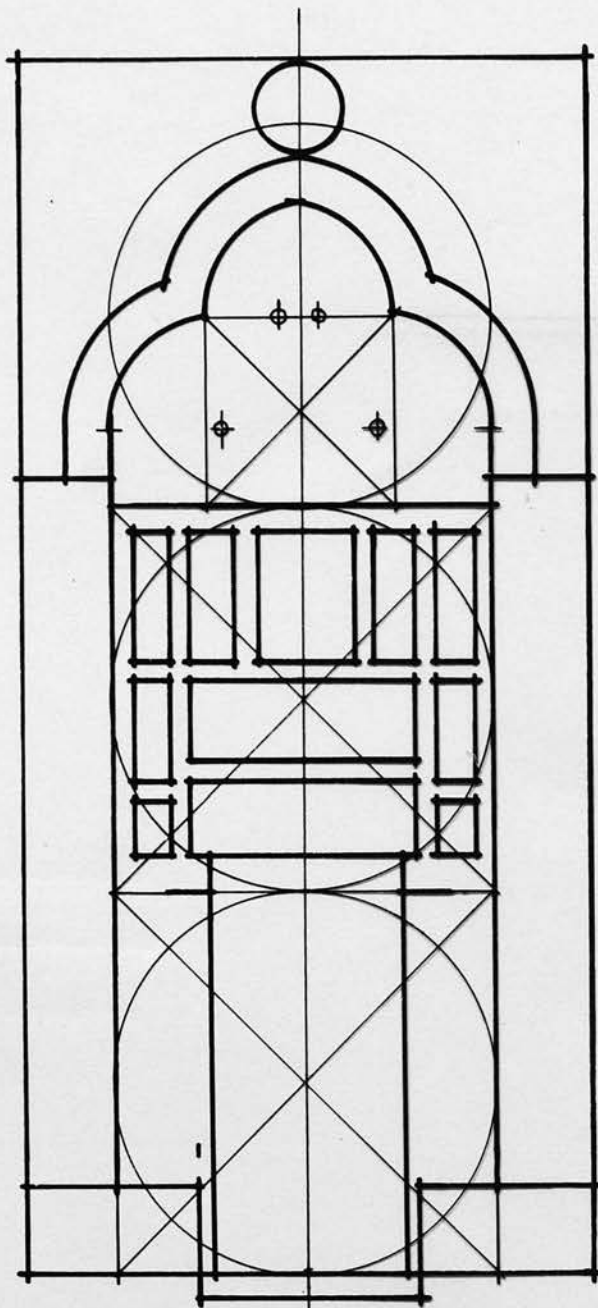
30°/60° RECTANGLE

OPENING WIDTH
EQUAL TO
1/2 RECESS.

99 MOSQUE & MAUSOLEUM OF QAYTĀY, 877-79/1472-74,
ENTRANCE TO MAUSOLEUM.

C

FROM 8 WALLS, A.G., AN ATTEMPT
RECONSTRUCTION.....
Ph.D. THESIS, OCT. 1970.



MUQARNAS LOWER
 THAN ARCH
 COMPARTMENT.

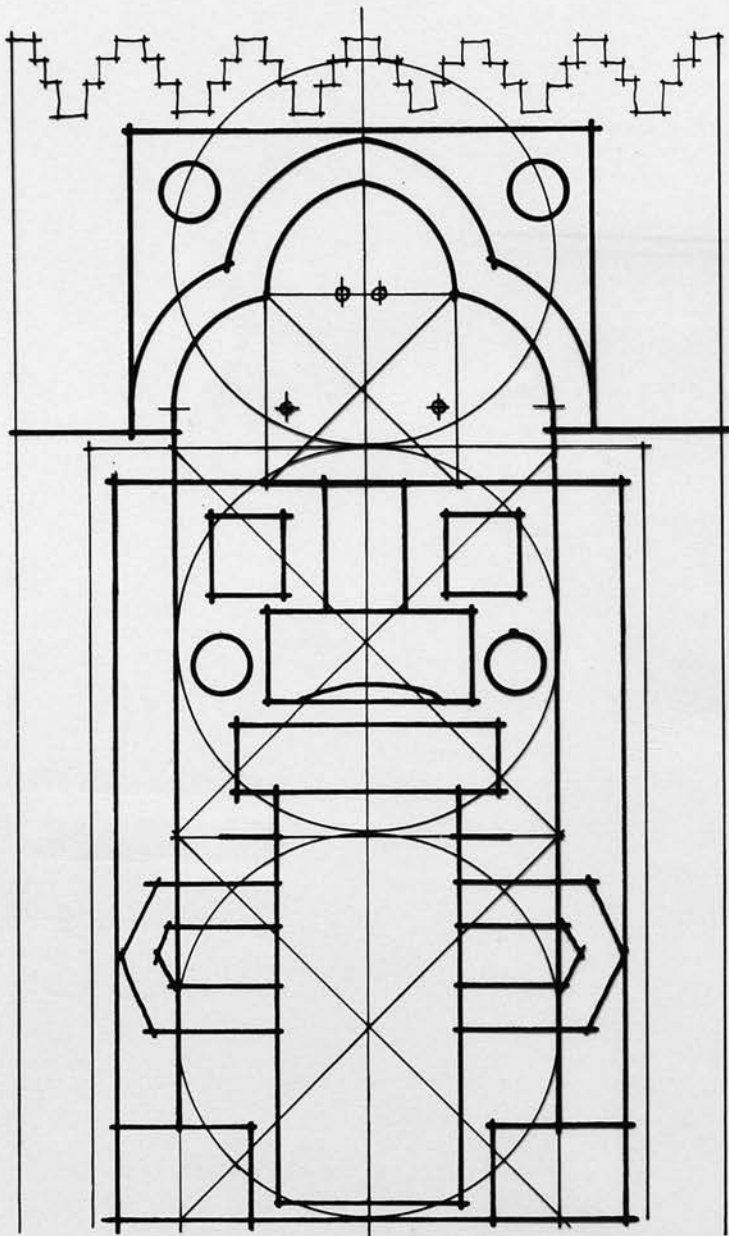


76

SABİL - KUTTAB QĀYTBĀY, OPPOSITE AL-AZHAR,
 BB1/1477

DD

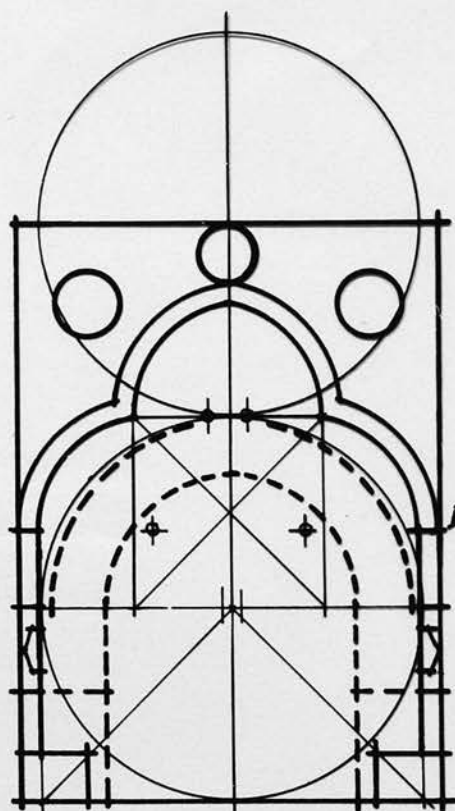
FROM 8 WALLS, A. G. AN ATTEMPTED
 RECONSTRUCTION 000
 Ph. D. THESIS, OCTO '79.



MOSQUE OF CAṢALḅĀY, AT MEDĪNAT AL-FAYYŪM,
905/1499.

FROM: WALLS, A. G., AN ATTEMPTED
RECONSTRUCTION
Ph.D. THESIS, OCT. '79.

E



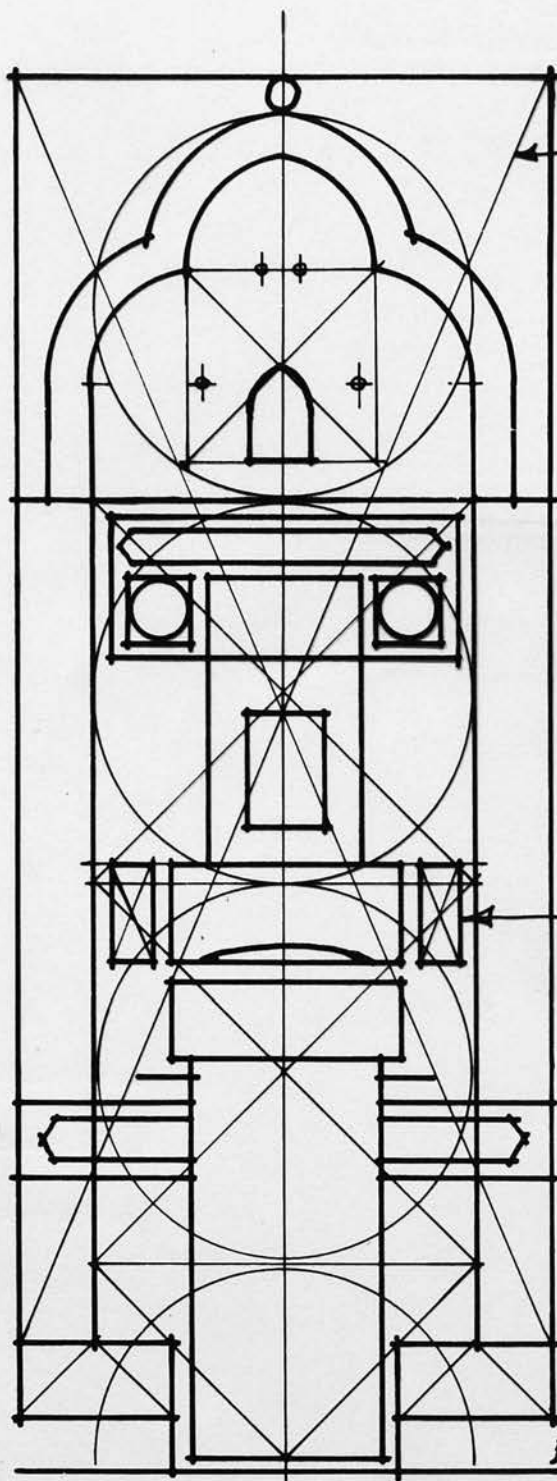
SPRINGING INDICATED
BY MOULDING.

322

REMAINS OF PALACE OF QĀNSŪH AL-GHŪRĪ,
956-22/1501-16.

FROM WALLS, A. G., AN ATTEMPTED
RECONSTRUCTION...
Ph.D. THESIS, OCTOBER 1979.

I



22 1/2° / 67 1/2°
 RECTANGLE
 NOTE CENTRE
 AT TOP OF WINDOW

22 1/2° / 67 1/2°
 RECTANGULAR
 PANEL

Σ LINTEL COMPARTMENT-
 ATION LEVEL WITH
 CENTRE OF CIRCLE

OPENING WIDTH
 EQUAL TO 1/2
 RECESS.

UNUSUAL TO HAVE
 FL. LEVEL SO LOW.

99 MOSQUE & MAUSOLEUM OF QĀYTBĀY, 877-79 / 1472-74.
 PRINCIPAL ENTRANCE.

B

FROM 8 WALLS, A.O.G., AN ATTEMPTED
 RECONSTRUCTION 000
 Ph.D. THESIS, Oct. 1970.