



Food and Agriculture Organization
of the United Nations

Livestock in RuLIS – the Rural Livelihoods Information System

RuLIS is a joint FAO – World Bank – IFAD initiative

Piero Conforti, FAO Statistics (ESS)

February 2020

What is RuLIS?

Data: indicators and variables

- 116 ready-made indicators from household surveys
- 15 ready-made macro indicators from other sources (World Bank, FAO, UNPD)
- A section allowing to build customized indicators
- Access to bulk-download of indicators and 277 variables, when micro-data are publicly available

DATA ARE STILL UNDER REVISION!!

different types of users:

- less experts (mostly indicators);
- intermediate (can use customized indicators)
- more expert (mostly variables)

Research products – in the pipeline

- FAO, IFAD and World Bank papers and presentations
- A portal linking other projects
- Outlet of technical papers using the data

58 Surveys – 38 countries, 28 LSMS, 17 -ISA

Armenia	Integrated Living Conditions Survey	2010
Armenia	Integrated Living Conditions Survey	2013
Bangladesh	Household Income-Expenditure Survey	2010
Bolivia	Encuesta de los Hogares	2008
Bulgaria	Multitopic Household Survey 2007	2007
Burkina Faso	Enquête Multisectorielle Continue	2014/15
Cambodia	Cambodia Socio-Economic Survey	2009
Cameroon	Fourth Cameroon Household Survey	2014
Côte d'Ivoire	Enquête sur le Niveau de Vie des Ménages 2008	2008
Ecuador	Encuesta sobre Condiciones de Vida	2006
Ecuador	Encuesta sobre Condiciones de Vida	2014
Ethiopia	Ethiopia Socioeconomic Survey	2013/14
Ethiopia	Ethiopia Socioeconomic Survey	2014/15
Georgia	Integrated Household Survey	2013
Georgia	Integrated Household Survey	2014
Georgia	Integrated Household Survey	2015
Ghana	Ghana Living Standards Survey	2012/13
Guatemala	Encuesta Nacional de Condiciones de Vida	2011
Guatemala	Encuesta Nacional de Condiciones de Vida	2014
India	India Human Development Survey	2005
India	India Human Development Survey	2012
Iraq	The Iraq household socio-economic survey	2007
Iraq	The Iraq household socio-economic survey	2012
Kenya	Integrated Household Budget Survey	2005/06
Kyrgyzstan	Integrated sample household budget and labour survey	2013
Malawi	Second Integrated Household Survey	2004
Malawi	Second Integrated Household Survey	2011
Malawi	Third Integrated Household Survey	2013
Malawi	Fourth Integrated Household Survey	2017

Mexico	Encuesta Nacional de Ingresos y Gastos de los Hogares	2014
Mongolia	Socioeconomic Survey	2014
Mozambique	Inquérito sobre Orçamento Familiar	2008
Nepal	Nepal Living Standards Survey	2011
Nicaragua	Encuesta Nacional de Hogares sobre Medición de Nivel de Vida	2014
Niger	National Survey on Household Living Conditions and Agriculture	2011
Niger	National Survey on Household Living Conditions and Agriculture	2014
Nigeria	General Household Survey	2012/13
Nigeria	General Household Survey	2015/16
Pakistan	Pakistan Social and Living Standards Measurement Survey	2013-14
Panama	Encuesta de Niveles de Vida 2008	2008
Peru	Encuesta Nacional de Hogares	2010
Peru	Encuesta Nacional de Hogares	2014
Peru	Encuesta Nacional de Hogares	2015
Rwanda	Integrated Household Living Conditions Survey	2013
Senegal	Enquête de Suivi de la Pauvreté au Sénégal	2011
Serbia	Living Standards Measurement Survey	2007
Sierra Leone	Integrated Household Survey 2011	2011
Tanzania	National Panel Survey	2008/09
Tanzania	National Panel Survey	2010/11
Tanzania	National Panel Survey	2012/13
Timor Leste	Survey of Living Standards	2007/08
Uganda	The Uganda National Panel Survey	2009/10
Uganda	The Uganda National Panel Survey	2010/11
Uganda	The Uganda National Panel Survey	2011/12
Uganda	The Uganda National Panel Survey	2013/14
Viet Nam	Household Living Standards Survey	2010

Indicators in ten clusters:

- 1) Income and Productivity
- 2) Poverty and Inequality
- 3) Employment and Education
- 4) Social Protection
- 5) Land
- 6) Livestock
- 7) Inputs, Technology and Credit
- 8) Infrastructure and Services
- 9) Shocks and Migration
- 10) Sample Characteristics

Cross-tabulation of indicators by “qualifiers”

Category	Qualifier	Description
Area	Urban	Based on national definitions
	Rural	
Participation in agriculture	Income from agriculture greater than 30%	Only for hhs involved in agriculture
	Income from agriculture lower than 30%	
	No income from agriculture	
Farm holding size	Small scale ag producers	Based on the definition adopted by the IAEG-SDG
	Non-small scale ag producers	
Sex	Only male adults in the household	Male for the individual-level data
	Only female adults in the household	Female for the individual level data
	Both male and female adults in the household	
Expenditure Quintiles	Quintile 1	Based on consumption expenditure
	Quintile 2	
	Quintile 3	
	Quintile 4	
	Quintile 5	

6) Livestock

- Average tropical livestock units owned by farm households (TLU)
- Share of livestock farm households owning large ruminants (%)
- Share of livestock farm households owning equine (%)
- Share of livestock farm households owning small ruminants (%)
- Share of livestock farm households owning poultry (%)
- Share of livestock farm households owning pigs (%)
- Share of livestock farm households with at least one animal vaccinated (%)
- Share of livestock farm households covered by veterinarians or paraprofessionals (%)
- Landless livestock households, share of total livestock households (%)

Figure 1a: Average number of small ruminants per household

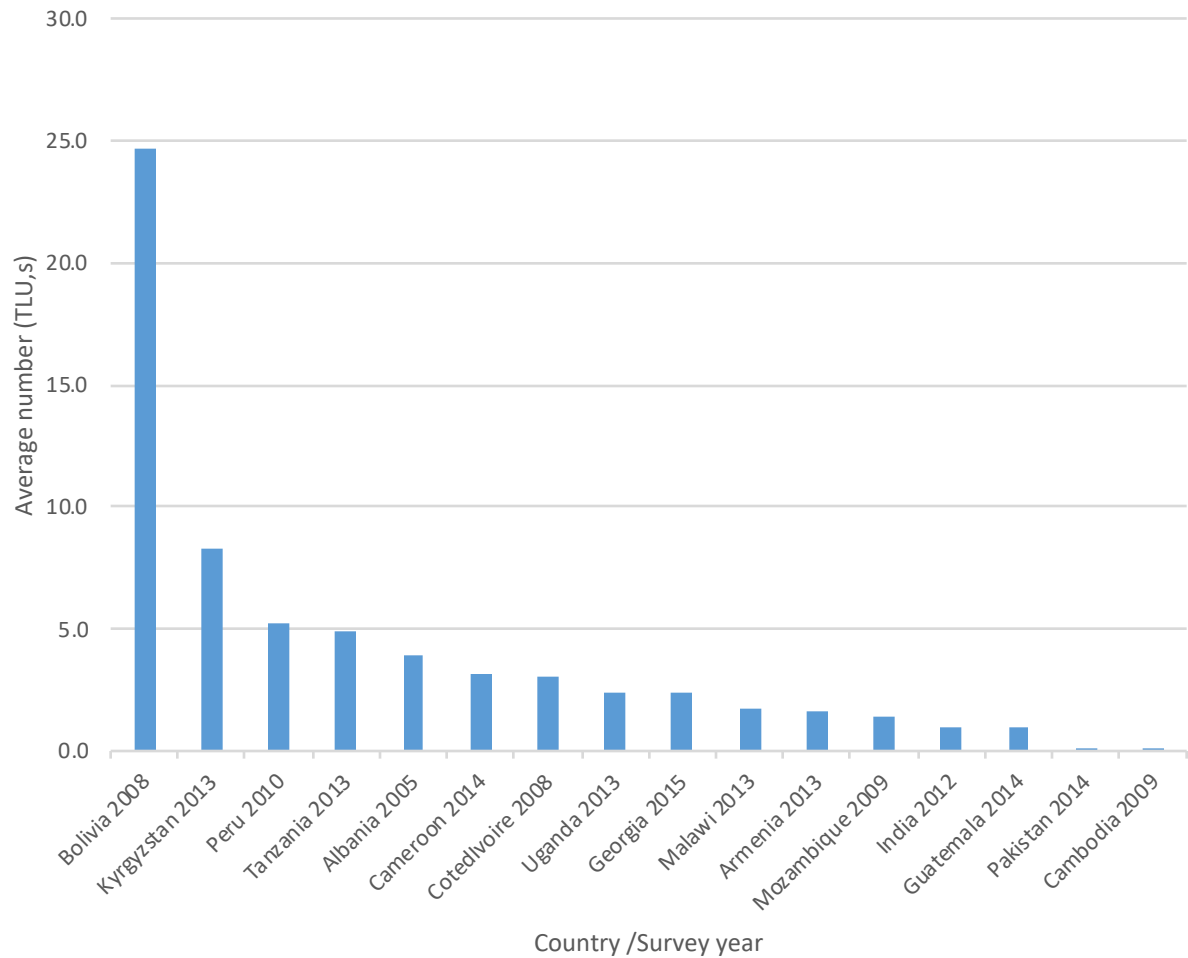
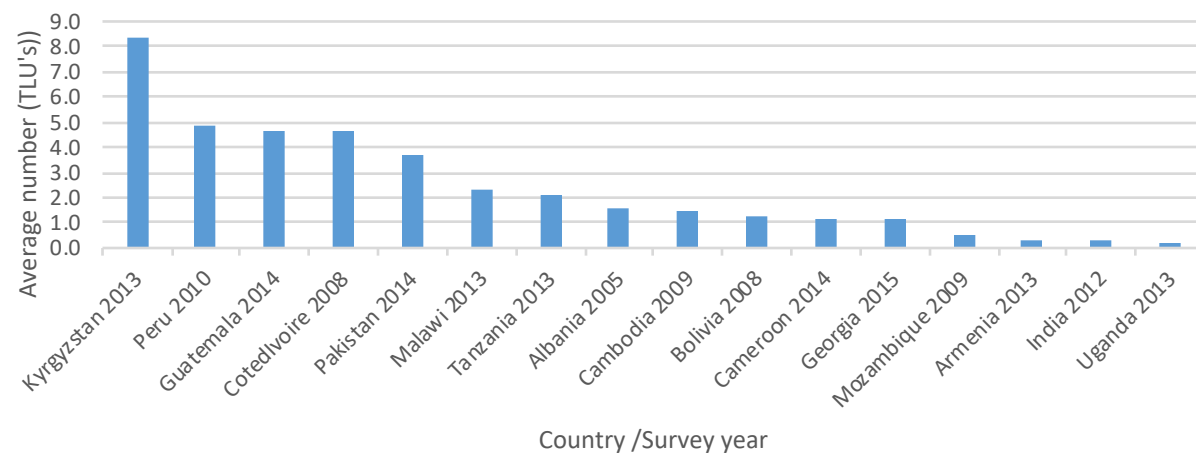
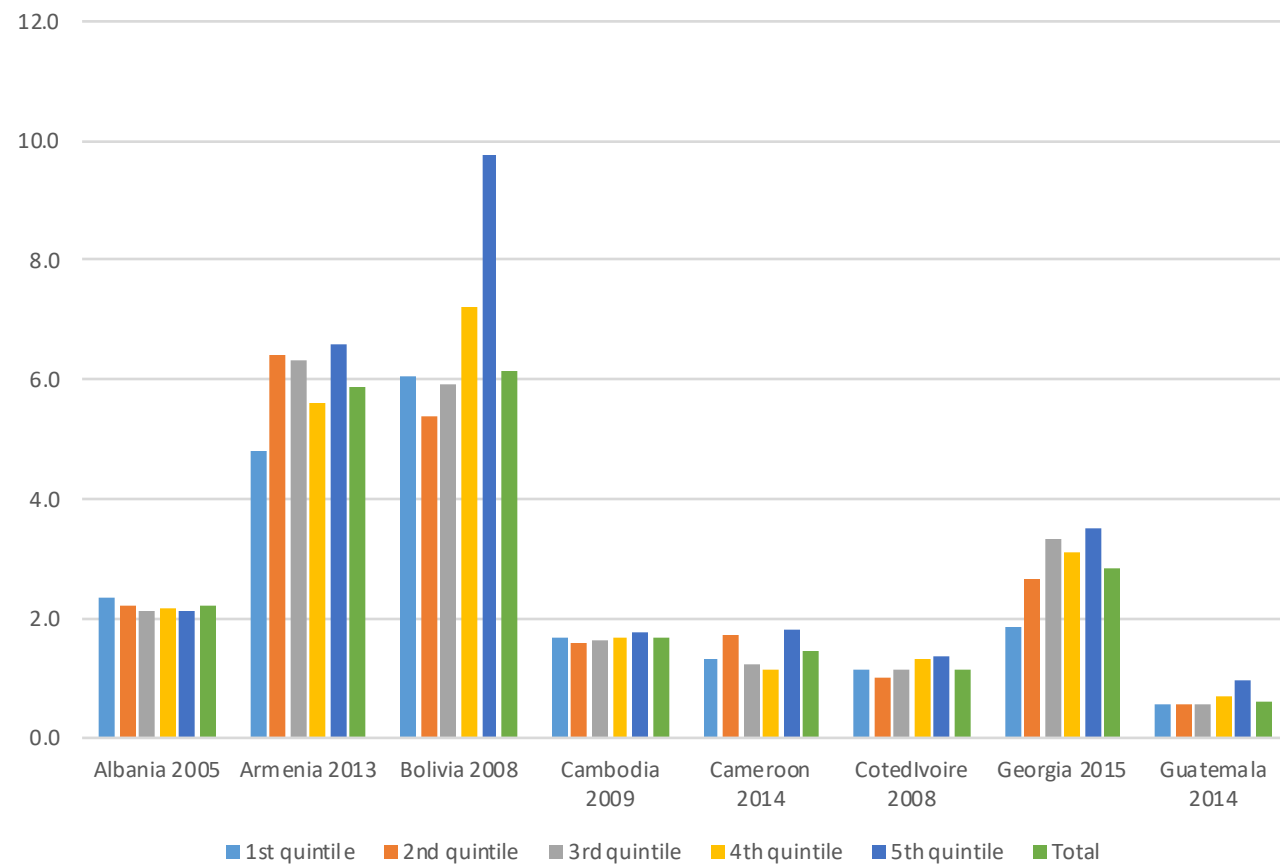


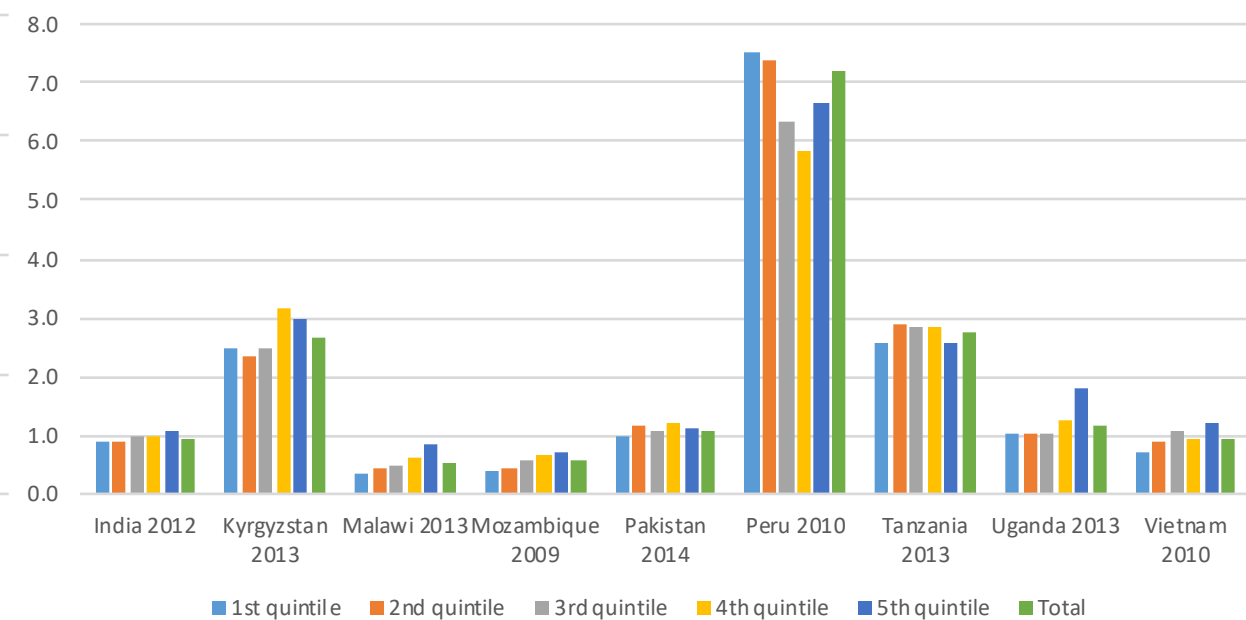
Figure 1b: Average number of large ruminants per household



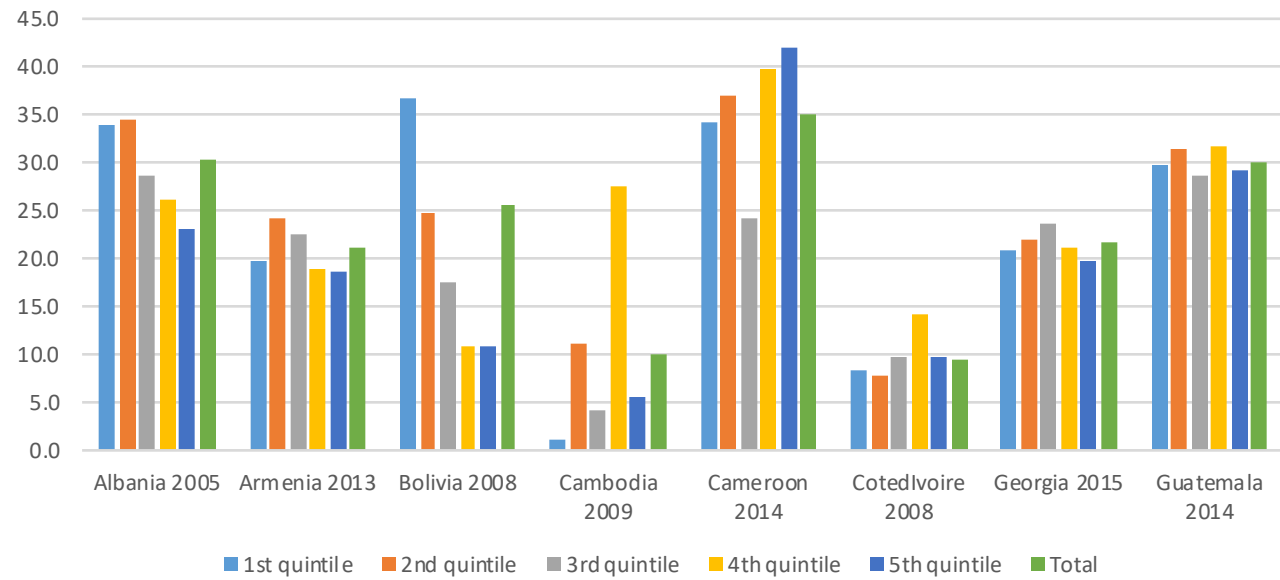
TLUs in livestock holdings, by expenditure quintiles for selected countries



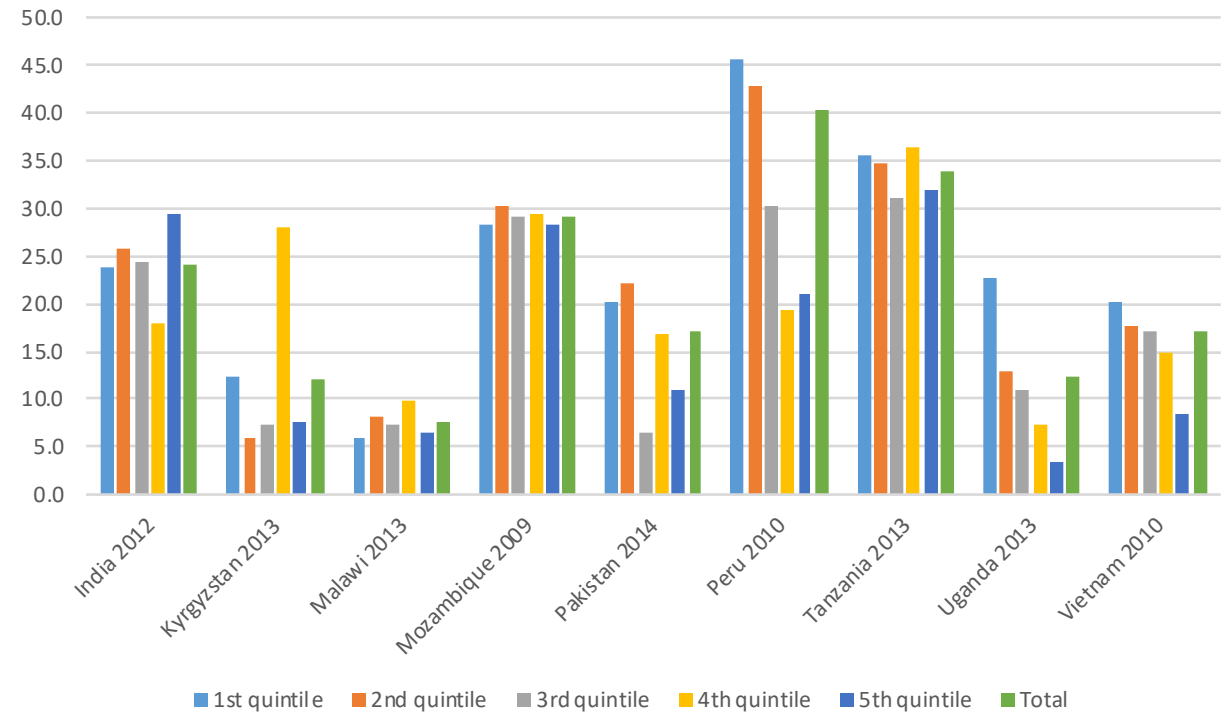
TLUs of livestock holding by expenditure quintiles for selected countries



Livestock's contribution to the total income (%) of livestock-keeping households, by expenditure quintiles for selected countries



Livestock's contribution to the total income (%) of livestock-keeping households, by expenditure quintiles for selected countries



Way forward

A first product, public with 58 surveys <http://www.fao.org/in-action/rural-livelihoods-dataset-rulis/en/>

- Complete a systematic data revision and outliers detection-imputation
- Expand on poverty indicators
- Expand coverage (countries, surveys, also from the past)
- Strengthen partnerships, especially at country level, to expand and further validate
- Enlarge and enhance the community of users/contributors

Thank you