

Green space and cosmic order: Le Corbusier's
understanding of nature

Emma Dummett

ILLUSTRATIONS

Ph.D
University of Edinburgh
2007

List of Illustrations

All illustrations not otherwise credited are the author's own photographs.
For full bibliographical information on sources, please see the bibliography in the first volume.

- 1.1 Sketches after Owen Jones, *A Grammar of Ornament*, c.1902-03 (source: H A Brooks, *Le Corbusier's Formative Years*)
 - 1.2 Sketch of pine trees, c.1906-07 (source: *Le Corbusier's Formative Years*)
 - 1.3 Villa Fallet, La Chaux-de-Fonds, 1906 (source: *Le Corbusier's Formative Years*)
 - 1.4 Villa Stein-de Monzie, entrance façade, and Le Corbusier's drawings of leaves (source: *Une Maison – un palais*)
 - 1.5 Drawing of tree (source: *The Modulor*)
 - 1.6 Amedée Ozenfant, *Bottle, Pipe and Books*, 1918 (source: Green, *Cubism and its Enemies*)
 - 1.7 "Nature" and "human creations" from *La Peinture Moderne*
 - 1.8 Plan for Rio de Janeiro, 1929 (source: *Oeuvre Complète 1929-34*)
 - 1.9 Plan Obus for Algiers, 1930 (source: *Oeuvre Complète 1929-34*)
 - 1.10 Chandigarh, plan, 1950-51 (source: *Oeuvre Complète 1952-57*)
 - 1.11 *The Modulor*, cover
-
- 2.1 Sketch plan of Hampstead Garden Suburb, c. 1910 (source: FLC B2-20-357)
 - 2.2 Cité-jardin aux Crétets for Arnold Beck, perspective view, 1914 (source: H A Brooks, ed., *The Garland Archive*, vol. 1)
 - 2.3 Saint-Nicolas-d'Aliermont, near Dieppe, plan, 1917 (source: H A Brooks, ed., *The Garland Archive*, vol. 1)
 - 2.4 Saint-Nicolas-d'Aliermont, elevation of houses as built (source: *Le Corbusier's Formative Years*)
 - 2.5 Workers' housing scheme, La Grande Couronne, Seine-Maritime, 1920 (source: H A Brooks, ed., *The Garland Archive*, vol. 1)
 - 2.6 Immeubles Villas, 1922 (source: *Oeuvre Complète 1910-29*)
 - 2.7 Sketch of housing at Hampstead Garden suburb, c. 1910 (source: FLC B2-20-362)
 - 2.8 Residential area from the Contemporary City for Three Million Inhabitants, 1922 (source: *The City of Tomorrow*)
-
- 3.1 Marseilles Unité, 1945-52, block carved with the passage of sun in summer and winter
 - 3.2 Marseilles Unité, planter on roof
 - 3.3 Marseilles Unité, view over roof wall and concrete rocks
 - 3.4 Marseilles Unité, vertical slab forming right angle with roof wall
 - 3.5 Caspar David Friedrich, *Moonrise on the Seashore*, 1822 (source: Keith Hartley, ed., *The Romantic Spirit in German Art 1790-1990*)
 - 3.6 Caspar David Friedrich, *Two Men Contemplating the Moon*, 1819 (source: *The Romantic Spirit in German Art 1790-1990*)
 - 3.7 Caspar David Friedrich, *Monk by the Sea*, 1809-10 (source: *The Romantic Spirit in German Art 1790-1990*)
 - 3.8 Caspar David Friedrich, *Woman Against the Setting Sun*, 1818 (source: *The Romantic Spirit in German Art 1790-1990*)

- 3.9 Plan and section of cell at Carthusian monastery at Galluzzo, outside Florence (“Ema”), 1907 (source: *Le Corbusier’s Formative Years*)
- 3.10 Sketch of cell at Ema, 1911 (source: *Le Corbusier’s Formative Years*)
- 3.11 Immeubles Villas, views of apartment interior (source: *Oeuvre Complète 1910-29*)
- 3.12 Sketch of apartment at the Marseilles Unité surrounded by essential joys (source: *The Marseilles Block*)
- 3.13 Marseilles Unité apartment for two adults and two children, plan (source: *The Marseilles Block*)
- 3.14 Monastery of La Tourette, Eveux-sur-l’Arbresle, 1953-61, monk walking on roof (source: *Un Couvent de Le Corbusier*)
- 3.15 La Tourette, monk at desk in cell (source: *Un Couvent de Le Corbusier*)
- 3.16 Illustrated letter from Le Corbusier to Madame Meyer, 1925 (source: *Oeuvre Complète 1910-29*)
- 3.17 Letter to Madame Meyer, detail (source: *Oeuvre Complète 1910-29*)
- 3.18 Villa Meyer, 1925, axonometrics (source: *Oeuvre Complète 1910-29*)
- 3.19 Le Corbusier’s desk at 24 rue Nungesser-et-Coli, Paris, 1931
- 3.20 Staircase, 24 rue Nungesser-et-Coli (source: *Oeuvre Complète 1929-34*)
- 3.21 Sketches of Rio de Janeiro, 1942 (source: *The Home of Man*)

- 4.1 Villa La Roche, Paris, 1923-25, entrance hall
- 4.2 Villa La Roche, entrance hall
- 4.3 Villa La Roche, balcony
- 4.4 Villa La Roche, gallery
- 4.5 Villa La Roche, gallery
- 4.6 Villa La Roche, ramp
- 4.7 Villa La Roche, library
- 4.8 Villa La Roche, first project, plan (source: *Oeuvre Complète 1910-29*)
- 4.9 Villa La Roche, first project, views into central courtyard (source: *Oeuvre Complète 1910-29*)
- 4.10 Villa La Roche, glazing on first floor
- 4.11 Villa Stein-de Monzie, Paris, 1926-27, early scheme for north façade (source: Benton, *The Villas of Le Corbusier 1920-30*)
- 4.12 Villa Stein-de Monzie, photographs showing architectural promenade (source: *Oeuvre Complète 1910-29*)
- 4.13 Villa Stein-de Monzie, south façade (source: *Oeuvre Complète 1910-29*)
- 4.14 Villa Savoye, Poissy, 1929-31, exterior
- 4.15 Villa Savoye, ramp looking towards terrace garden on first floor
- 4.16 Villa Savoye, salon and terrace garden
- 4.17 Villa Savoye, opening in roof garden wall
- 4.18 Villa Savoye, view up ramp to roof garden (source: *Oeuvre Complète 1910-29*)
- 4.19 League of Nations project, 1927-28, view from above (source: *Oeuvre Complète 1910-29*)
- 4.20 John Rocque, Chiswick House and gardens, plan, 1736 (source: Dixon Hunt, *The Afterlife of Gardens*)
- 4.21 Sketch of “jardin anglais”, Munich (source text not given), c. 1910 (source: FLC B2-20-353)
- 4.22 Sketch of German landscape garden from Stübben, *Der Städtebau*, c. 1910 (source: FLC B2-20-347)

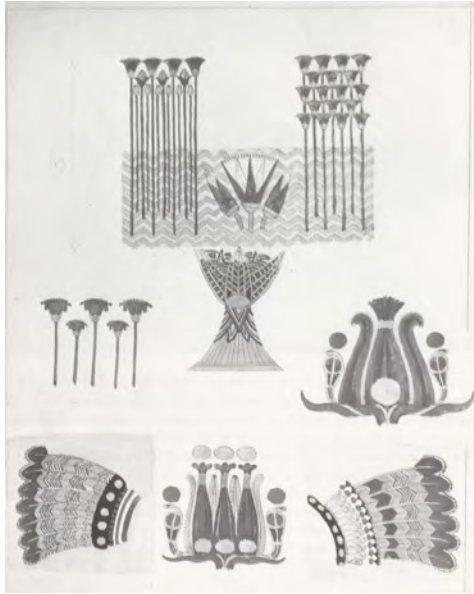
- 4.23 Auguste Choisy, sketch and perspective view of Acropolis, Athens, reproduced by Le Corbusier in *Towards a New Architecture*
- 4.24 *Composition with Guitar and Lantern*, 1922 (source: *Cubism and its Enemies*)
- 4.25 Petite Maison, Vevey, 1923-24, strip window in salon
- 4.26 Petite Maison, loggia in garden
- 4.27 Opening in garden wall (source: *Une Petite Maison*)
- 4.28 Plate A3 from *The Poem of the Right Angle*
- 4.29 Plate C2 from *The Poem of the Right Angle*
- 4.30 Right angle formed by window pane and lake (source: *Une Petite Maison*)
- 4.31 Right angle formed by pole and wall (source: *Une Petite Maison*)
- 4.32 Sketch of right angle (source: *Une Petite Maison*)
- 4.33 Sketches sent by Le Corbusier to Claudine Péter showing photographs to be taken of the Petite Maison (source: FLC T1-1-310)
- 4.34 Sketches sent to Claudine Péter (source: FLC T1-1-311)
- 4.35 Contemporary City, plan (source: *The City of Tomorrow*)
- 4.36 Winding paths among trees (source: *The Home of Man*)
- 4.37 Trees screening buildings (source: *The Home of Man*)
- 4.38 Framed view of trees (source: *The Home of Man*)

- 5.1 Arab women and house interiors (source: *The Radiant City*)
- 5.2 *Arcachon Fisherwoman*, 1928 (source: *Le Corbusier, Painter and Architect*)
- 5.3 *Composition with Moon*, 1929 (source: *Le Corbusier, Painter and Architect*)
- 5.4 Cabanon, Cap Martin-Roquebrune, 1951, exterior
- 5.5 Cabanon, interior
- 5.6 Studio adjacent to cabanon, exterior
- 5.7 Studio, collection of bones on bookshelf
- 5.8 Mural and painting on terrace of Etoile de mer restaurant
- 5.9 Villa Sarabhai, Ahmedabad, 1952-56, niches with “objects evoking a poetic reaction”
- 5.10 Villa Savoye, kitchen (source: *Oeuvre Complète 1929-34*)
- 5.11 Maison de Weekend, La Celle St Cloud, 1935, interior (source: *Oeuvre Complète 1934-38*)
- 5.12 Door, Assembly building, Chandigarh, 1962, exterior
- 5.13 Primitive temple with regulating lines reproduced by Le Corbusier in *Towards a New Architecture*
- 5.14 Villa de Mandrot, Le Pradet, 1929 (source: *Oeuvre Complète 1929-34*)
- 5.15 Berber carpet in Pavilion de L’Esprit Nouveau, Paris, 1925 (source: *Almanach d’architecture moderne*)
- 5.16 Modern glassware in Pavilion de L’Esprit Nouveau (source: *Almanach d’architecture moderne*)
- 5.17 Arcachon fishermen and women and traditional houses (source: *The Radiant City*)
- 5.18 Radiant farmhouse, exterior (source: *The Radiant City*)
- 5.19 Radiant farmhouse, interior (source: *The Radiant City*)
- 5.20 Radiant village (source: *The Radiant City*)
- 5.21 Sketch of Plan Directeur (source: *Poésie sur Alger*)
- 5.22 Sketch of Plan Directeur (source: *Poésie sur Alger*)

- 6.1 Villa Jeanneret, La Chaux-de-Fonds, 1912 (source: Gans, *The Le Corbusier Guide*)

- 6.2 Drancy, Paris suburbs (source: Evenson, *Paris: A Century of Change*)
- 6.3 Suresnes, Paris suburbs (source: *Paris: A Century of Change*)
- 6.4 Plessis-Robinson, Paris suburbs (source: *Paris: A Century of Change*)
- 6.5 Châtenay-Malabry, Paris suburbs (source: *Paris: A Century of Change*)
- 6.6 Drancy-La Muette, Paris suburbs (source: *Paris: A Century of Change*)
- 6.7 Tony Garnier, housing from La Cité industrielle, 1917, reproduced by Le Corbusier in *Towards a New Architecture*
- 6.8 Sketch of Romanian defensive structure, 1911 (source: *Le Voyage d'orient carnets*)
- 6.9 Sketch of house, Shipka, Bulgaria, 1911 (source: *Journey to the East*)
- 6.10 Sketch of house, Kazanlık, Turkey, 1911 (source: *Journey to the East*)
- 6.11 House, Kazanlık, plan (source: *Journey to the East*)
- 6.12 Villa Jeanneret, early sketch, 1912 (source: *Le Corbusier's Formative Years*)
- 6.13 Farmhouse at Le Locle, proposed remodelling, 1912 (source: *Le Corbusier's Formative Years*)
- 6.14 Felix Klipstein house project, 1914 (source: *Le Corbusier's Formative Years*)
- 6.15 Marseilles Unité, apartment interior (source: Curtis, *Le Corbusier: Ideas and Forms*)
- 6.16 Sketch of house, Turnovo, Bulgaria, 1911 (source: *Journey to the East*)
- 6.17 La Tourette, interior of cell (source: Ferro et al, *Couvent de La Tourette*)
- 6.18 Photograph of farm in Toulouse reprinted by Le Corbusier in *The Radiant City*
- 6.19 Villa Baizeau, Carthage, Tunisia, 1928-29 (source: *Oeuvre Complète 1910-29*)
- 6.20 House project, Cherchell, Algeria, 1942 (source: *Oeuvre Complète 1938-46*)
- 6.21 Villa Sarabhai, interior
- 6.22 Villa Sarabhai, rear façade
- 6.23 Secretariat building, Chandigarh, 1951-62, entrance façade

Chapter 1: Nature as ordered



1.1 Le Corbusier, sketches from Owen Jones, *A Grammar of Ornament*



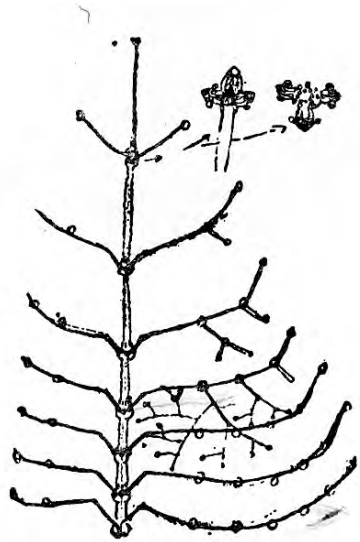
1.2 Le Corbusier, early sketch of pine trees



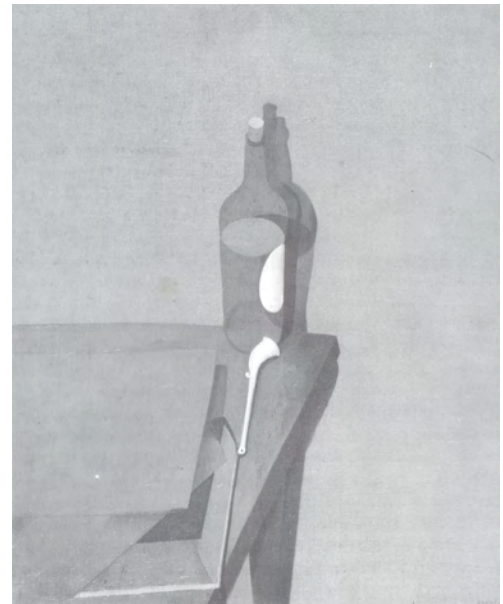
1.3 Villa Fallet



1.4 Villa Stein-de Monzie and drawings of leaves from *Une maison - un palais*



1.5 Early drawing of tree from *The Modulor*



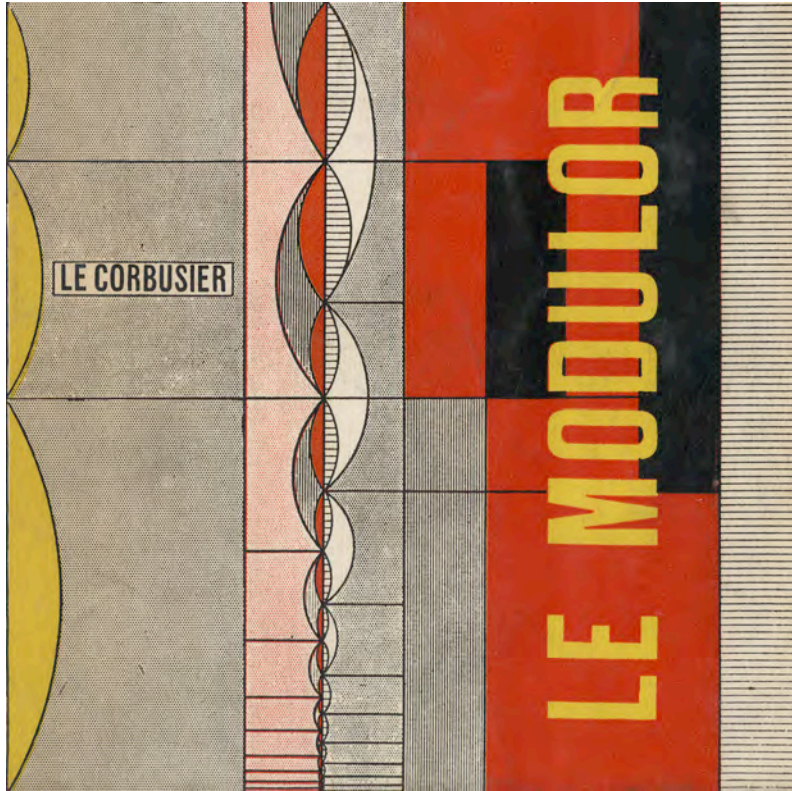
1.6 Ozenfant, *Bottle, Pipe and Books*



POLYÈDRES RÉGULIERS		POLYÈDRES IRRÉGULIERS	
<p>Tétraèdre $V = \frac{1}{3} B H$</p>	<p>Cube ou hexaèdre $V = a^3$</p>	<p>Prismes $V = B \cdot H$</p> <p><i>Pr. droit</i> <i>Pr. oblique</i> <i>Pr. droit tronqué</i></p>	<p>Pyramides $V = \frac{1}{3} B \cdot H$</p> <p><i>Py. régulière</i> <i>Py. quadrangulaire</i> <i>Py. tronquée</i></p>
<p>Octaèdre Totaux: 6 faces Oct. 8 arêtes Totaux: 12 arêtes Totaux: 20 arêtes</p>	<p>Dodecaèdre Icosaèdre</p>	<p>Cônes</p> <p><i>Cône droit</i> <i>Cône oblique</i> <i>Cône tronqué</i></p>	<p>CORPS RONDUS</p> <p><i>Cyl. droit</i> <i>Cyl. oblique</i> <i>Cyl. tronqué</i></p> <p><i>Sphère</i> <i>Sphère aplatisée</i> <i>Cône ou fuselé</i> <i>Annau tronqué</i> <i>Secteur tronqué</i></p>

Créations humaines, outils de perception et de mesure.

1.7 “Nature” and “human creations” from *La Peinture Moderne*



1.11 Modulor grid

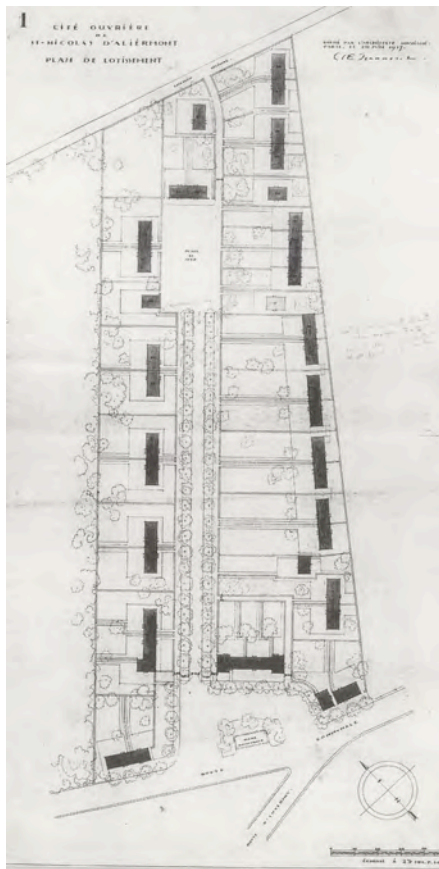
Chapter 2: Nature as provider of physical and spiritual well-being in the city



2.1 Le Corbusier's sketch plan of Hampstead Garden Suburb



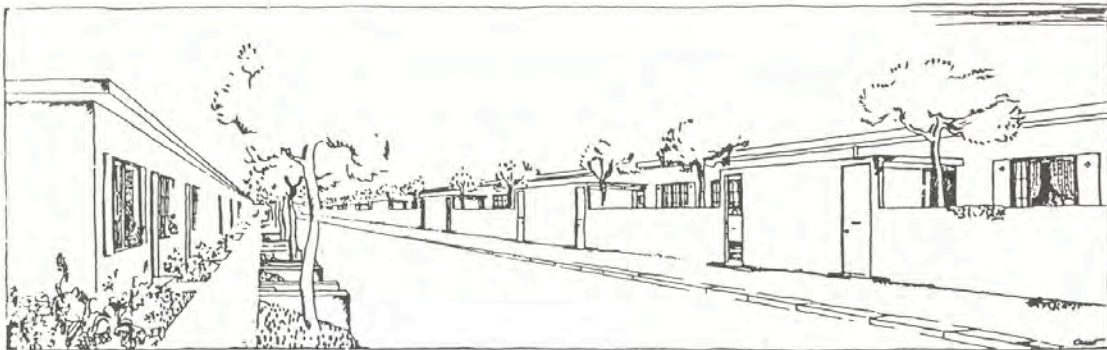
2.2 Cité-jardin aux Crétets for Arnold Beck



2.3 Saint-Nicolas-d'Aliermont, plan



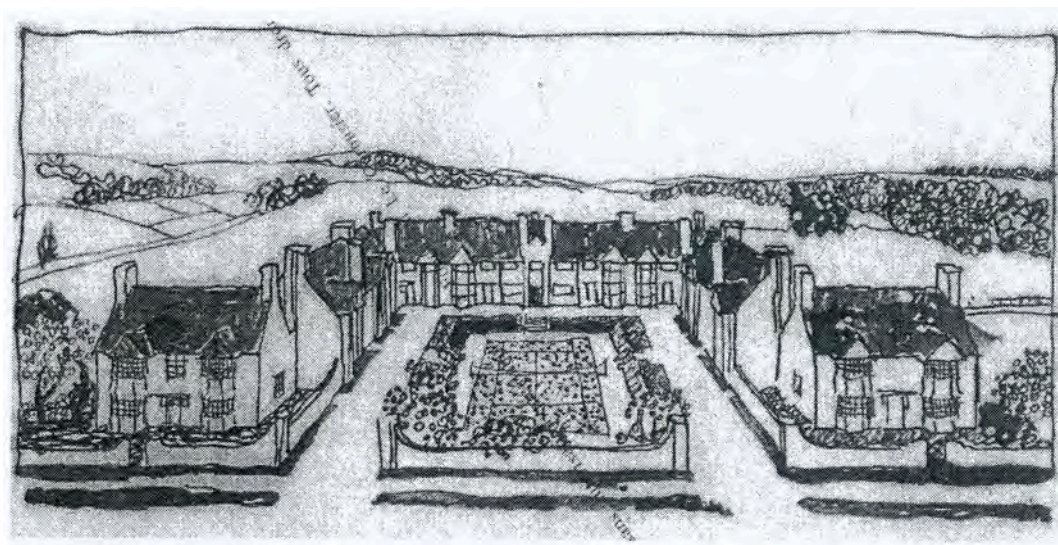
2.4 Saint-Nicolas-d'Aliermont, houses as built



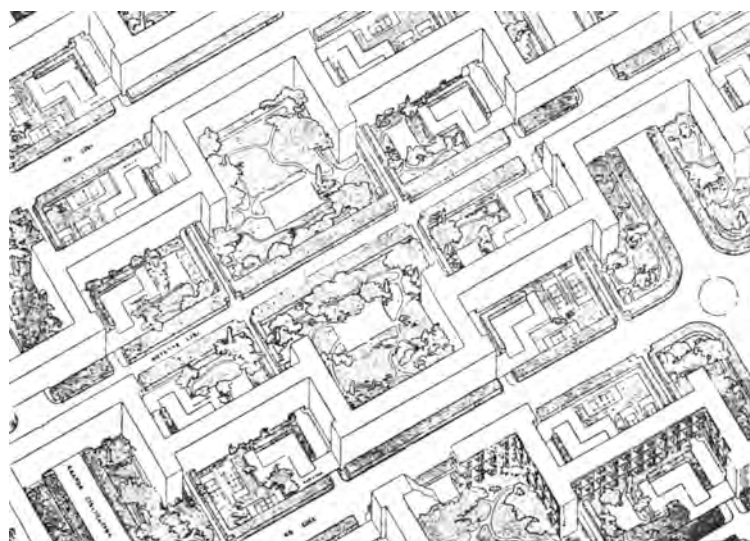
2.5 Housing scheme for La Grande Couronne



2.6 Immeubles Villas



2.7 Le Corbusier, sketch of housing at Hampstead Garden Suburb

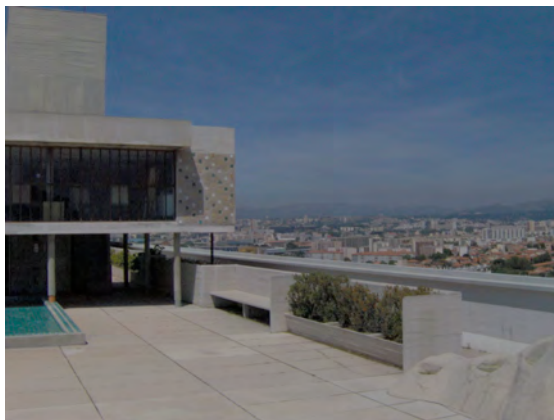


2.8 Residential blocks amid greenery from the Contemporary City

Chapter 3: Nature as private retreat



3.1 Block carved with passage of sun in summer and winter, outside entrance to Marseilles Unité



3.2 Planter on Unité roof



3.3 View across roof wall and concrete rocks



3.4 Vertical slab forming right angle with roof wall



3.5 Caspar David Friedrich, *Moonrise on the Seashore*



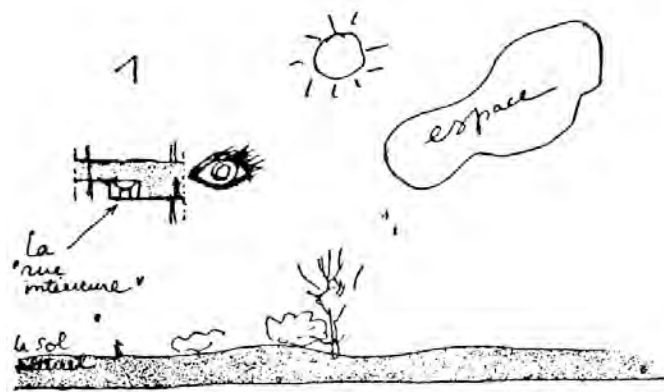
3.6 Caspar David Friedrich, *Two Men Contemplating the Moon*



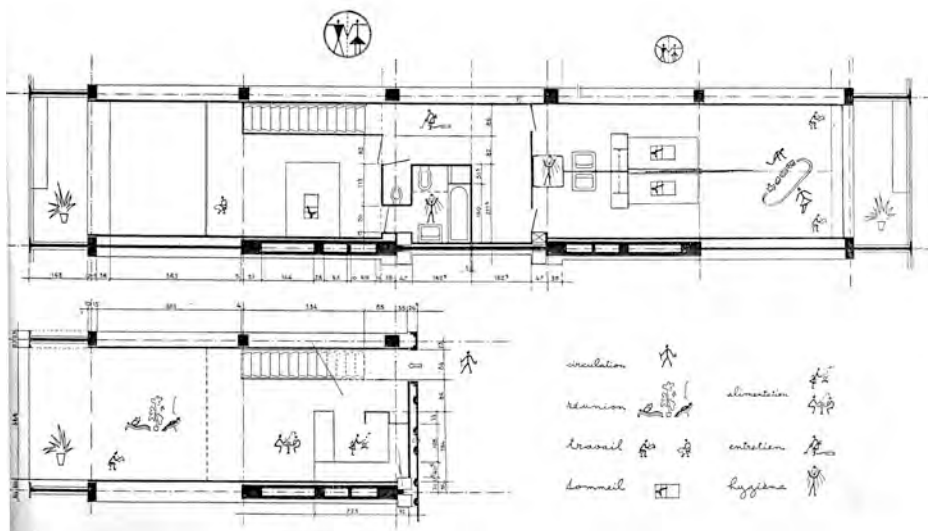
3.7 Caspar David Friedrich, *Monk by the Sea*



3.8 Caspar David Friedrich, *Woman Against the Setting Sun*



3.12 Sketch of Unité apartment surrounded by essential joys from *The Marseilles Block*



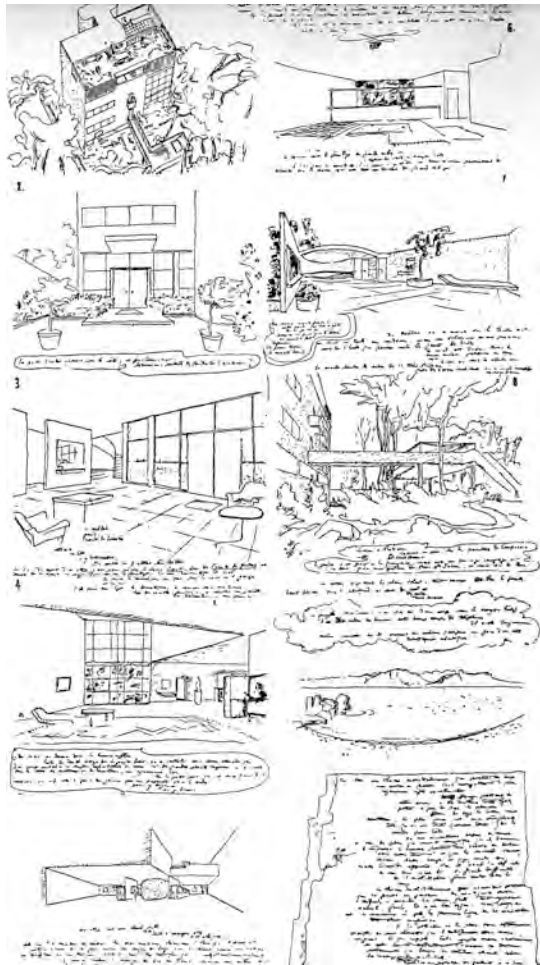
3.13 Plan of Marseilles Unité apartment for two adults and two children



3.14 Monk on La Tourette roof



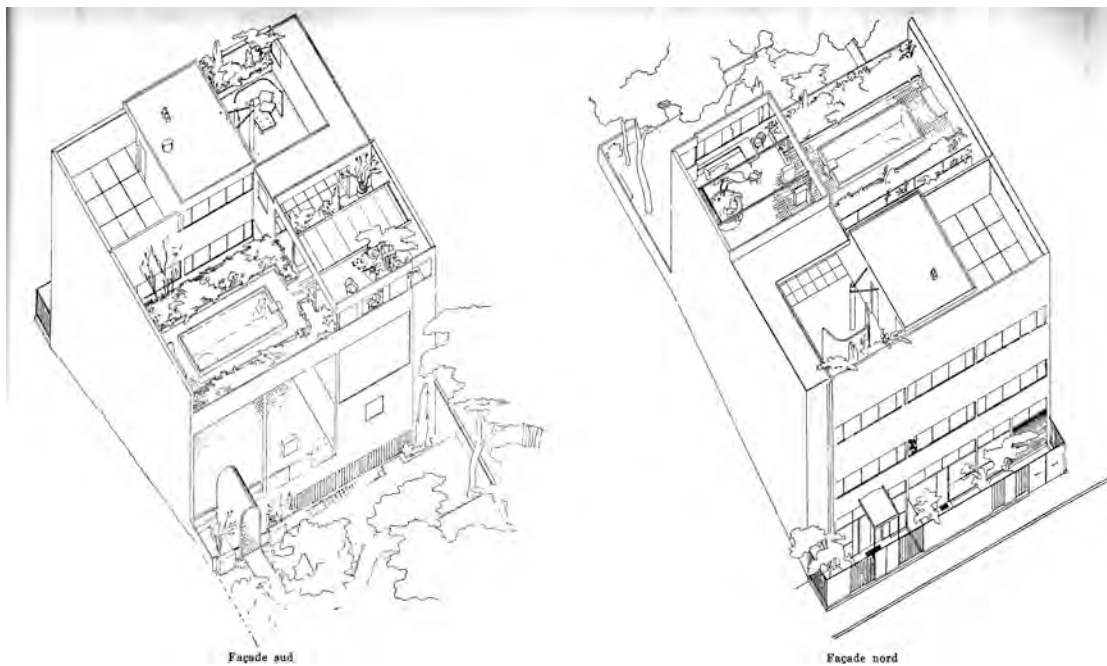
3.15 Monk at desk in La Tourette cell



3.15 Illustrated letter to Madame Meyer from the *Oeuvre Complète*



3.17 Letter to Madame Meyer, detail



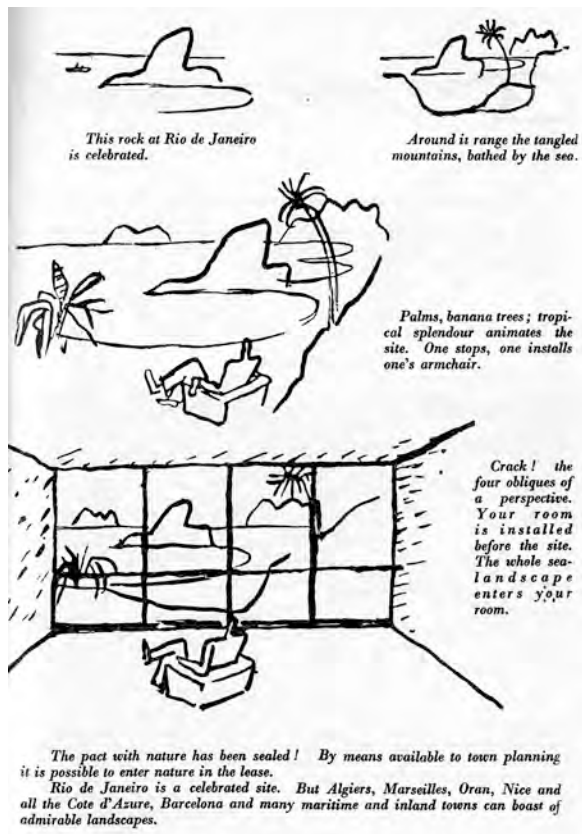
3.18 Villa Meyer, axonometric drawings



3.19 Le Corbusier's desk with opaque glass window



3.20 View from entrance hall to roof garden at 24 rue Nungesser-et-Coli from the *Oeuvre Complète*



3.21 Sketches of Rio from *The Home of Man*

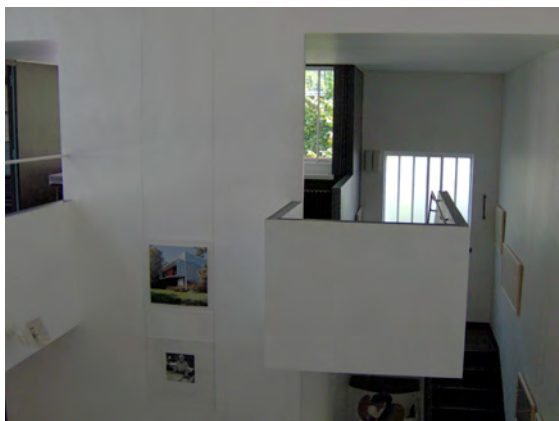
Chapter 4: Visual and experiential approaches to nature



4.1 Villa La Roche, entering hall



4.2 Villa La Roche, hall



4.3 Villa La Roche, balcony in hall



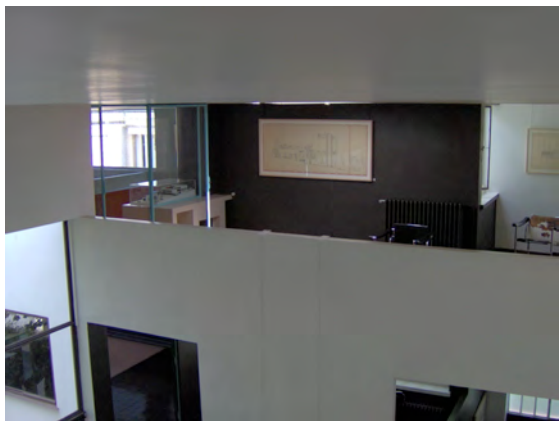
4.4 Villa La Roche, entering gallery



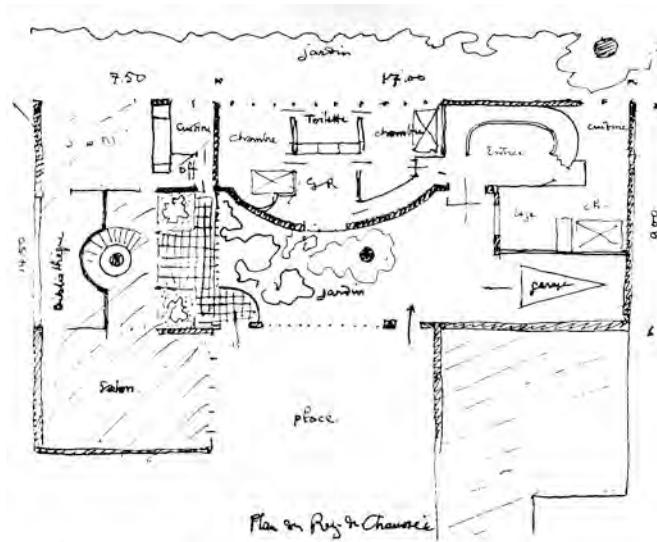
4.5 Villa La Roche, gallery



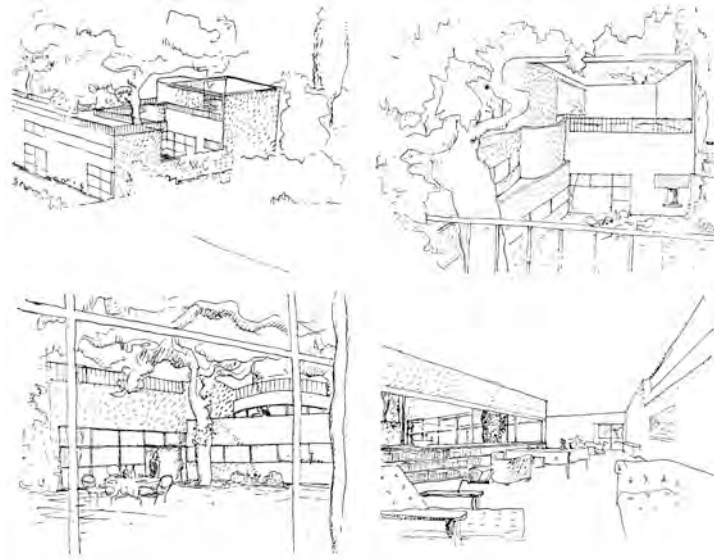
4.6 Villa La Roche, ramp



4.7 Villa La Roche, library



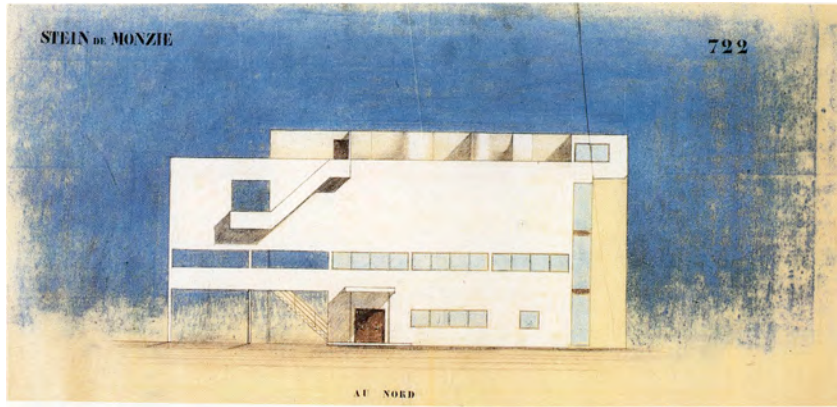
4.8 Villa La Roche, first project, plan



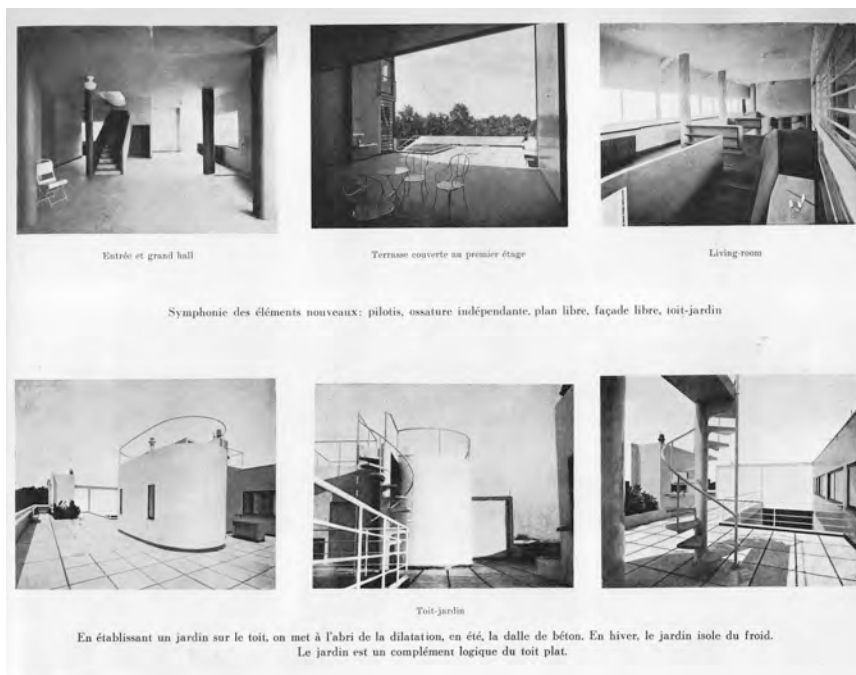
4.9 Villa La Roche, first project, views into central courtyard



4.10 Villa La Roche, glazing giving views to gallery and exterior



4.11 Villa Stein-de Monzie, early view of north façade



4.12 Villa Stein-de Monzie, architectural promenade in photographs from the *Oeuvre Complète*



4.13 Villa Stein-de Monzie, south façade



4.14 Villa Savoye, exterior



4.15 Villa Savoye, ramp looking towards terrace garden



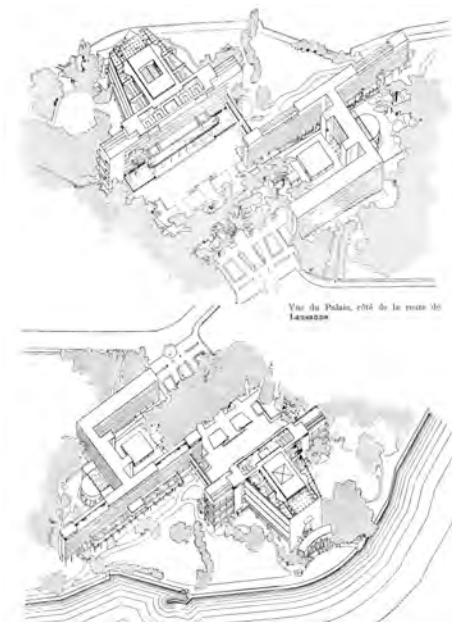
4.16 Villa Savoye, salon and terrace garden showing open and glazed strip windows



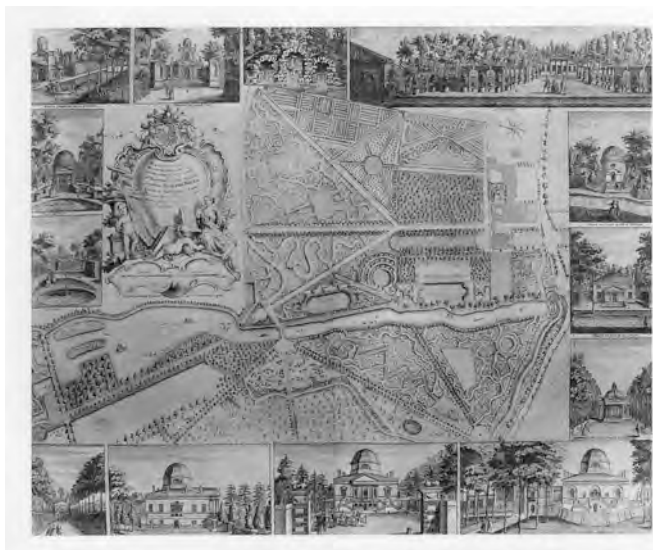
4.17 Villa Savoye, opening in roof garden wall



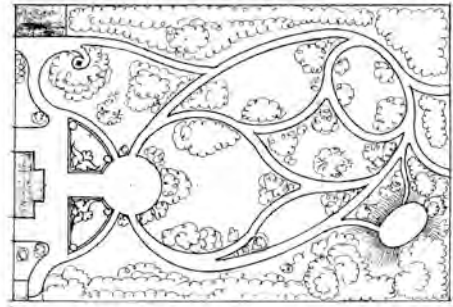
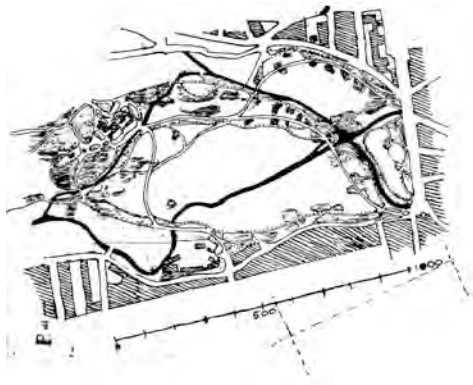
4.18 Villa Savoye, view up ramp from the *Oeuvre Complète*, with caption “promenade architecturale”



4.19 League of Nations project



4.20 John Rocque, plan of Chiswick house and garden, 1736

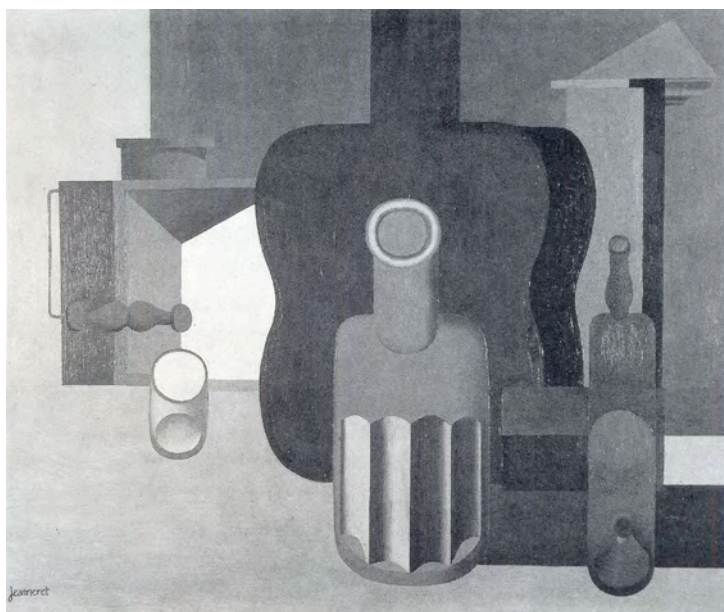


4.21 and 4.22 Le Corbusier's drawings of German landscape gardens, c. 1910



THE ACROPOLIS, ATHENS

4.23 Choisy's plan and perspective drawing of the Acropolis from *Towards a New Architecture*



4.24 *Composition with Guitar and Lantern*



4.25 Petite Maison, strip window



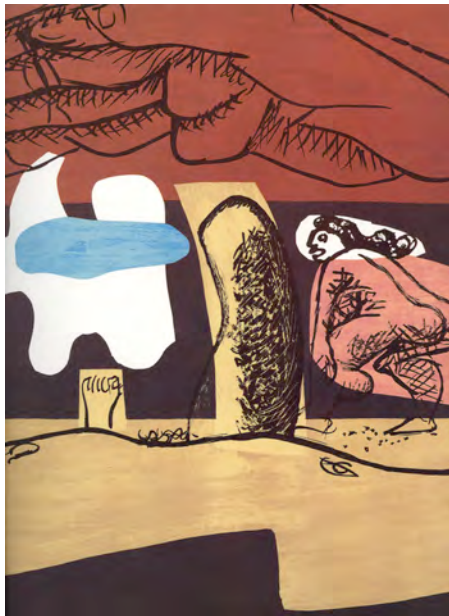
4.26 Petite Maison, garden loggia



4.27 Opening in garden wall from *Une Petite Maison*



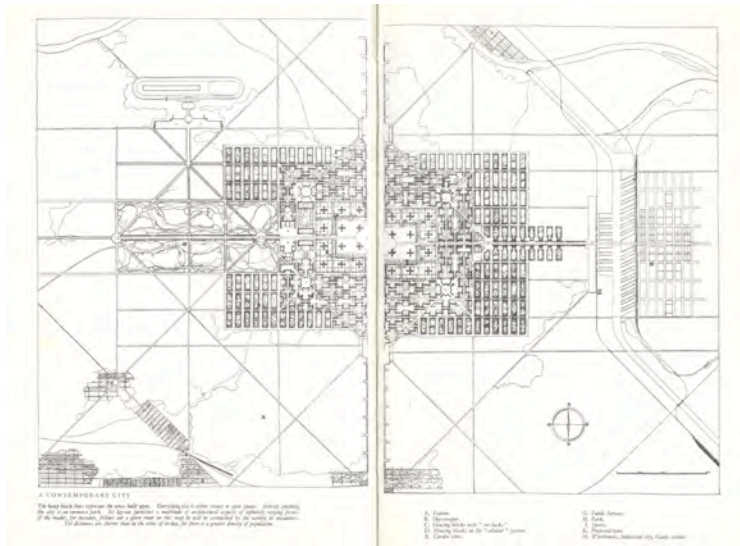
4.28 *The Poem of the Right Angle, A3*



4.29 *The Poem of the Right Angle, C2*



4.30 Right angle formed by window pane and lake from *Une Petite Maison*



4.35 Contemporary City, plan

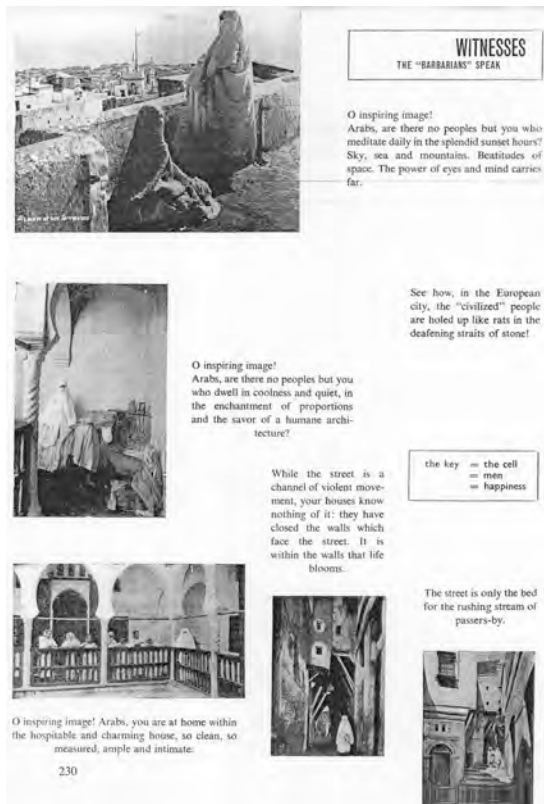


4.36 and 4.37 Winding paths and trees screening buildings from *The Home of Man*



4.38 Framed view of trees from *The Home of Man*

Chapter 5: Primitivism and nature



5.1 Spread from *The Radiant City* showing Arab women and house interiors



5.2 *Arcachon Fisherwoman*



5.3 *Composition with Moon*



5.4 Cabanon, exterior



5.5 Cabanon, interior



5.6 Le Corbusier's studio, exterior



5.7 Studio, bookcase with bones



5.8 Mural and painting on terrace of Etoile de mer restaurant



5.9 Villa Sarabhai, niches with “objects evoking a poetic reaction”



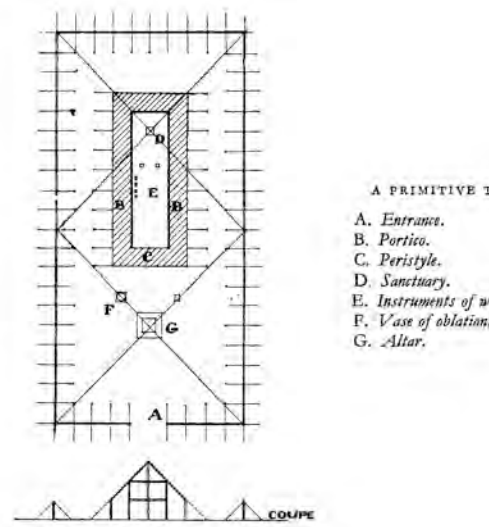
5.10 Villa Savoye, kitchen, from the *Oeuvre Complète*



5.11 Maison de Weekend, interior, from the *Oeuvre Complète*



5.12 Assembly door, exterior



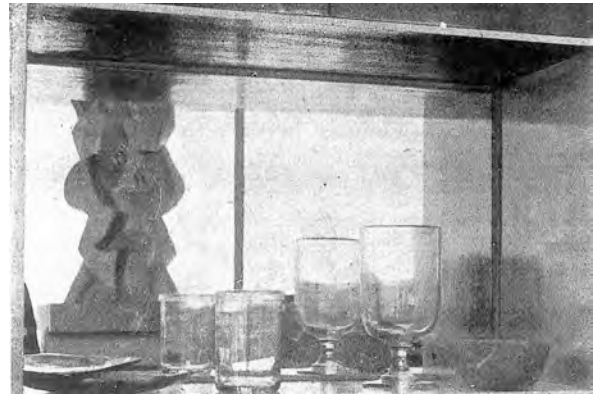
5.13 Primitive temple with regulating lines from *Towards a New Architecture*



5.14 Villa de Mandrot, exterior



5.15 Berber carpet in Pavilion de L'Esprit Nouveau



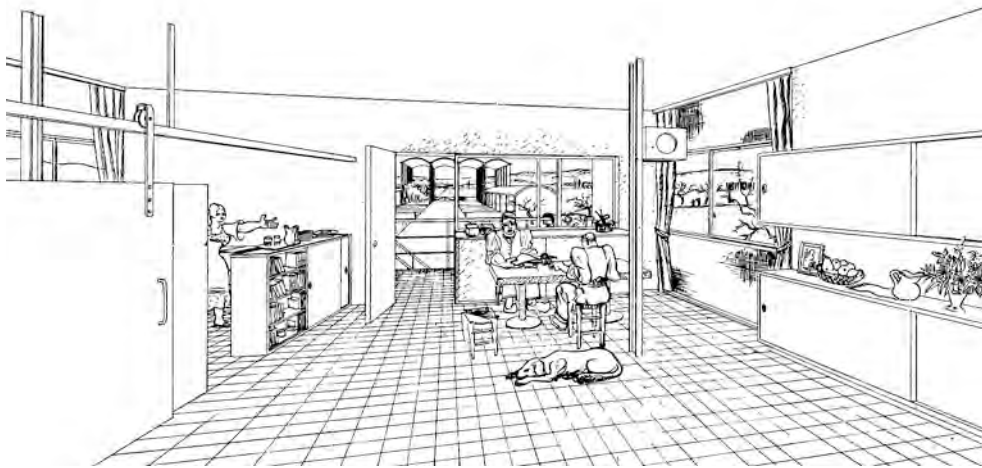
5.16 Glassware in Pavilion de L'Esprit Nouveau



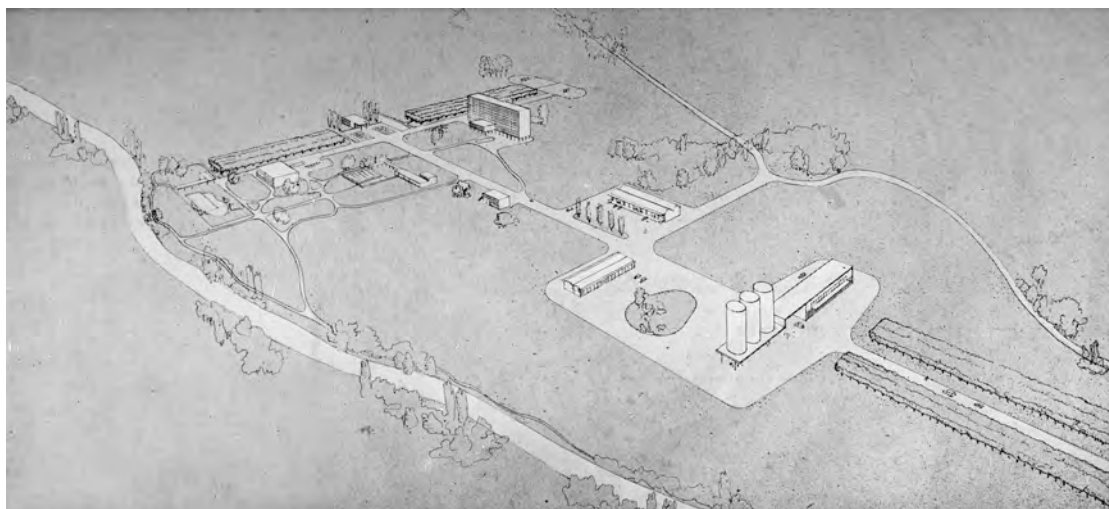
5.17 Spread from *The Radiant City* showing Arcachon fishermen, women and traditional houses



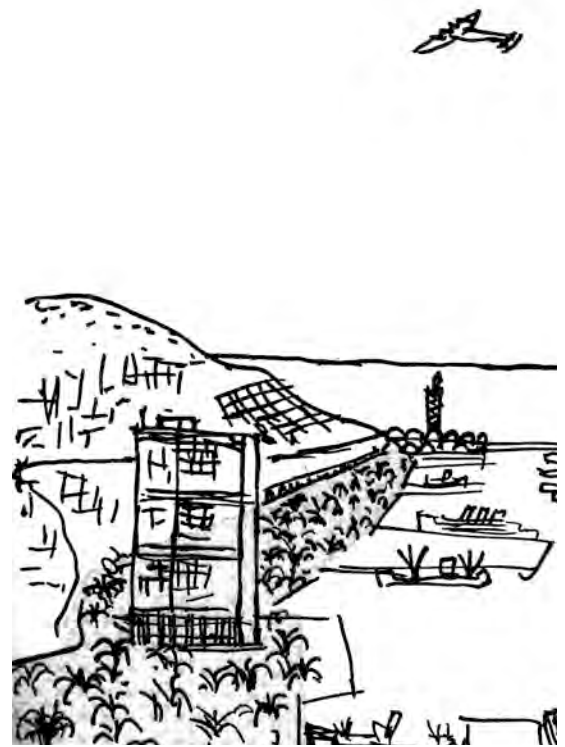
5.18 Radiant farmhouse, exterior



5.19 Radiant farmhouse, interior



5.20 Radiant village



5.21 and 5.22 Plan Directeur, sketches

Chapter 6: Le Corbusier, nature and vernacular architecture



6.1 Villa Jeanneret



6.2 Drancy



6.3 Suresnes



6.4 Plessis-Robinson



6.5 Châtenay-Malabry



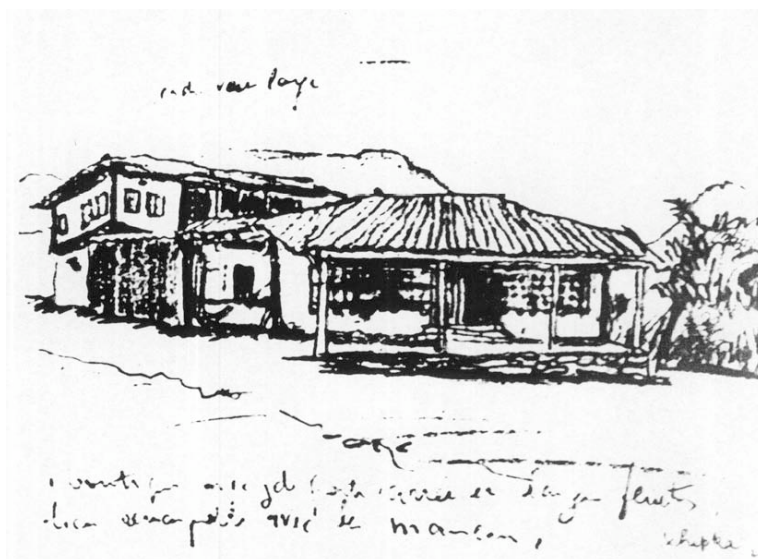
6.6 Drancy-La Muette



6.7 Tony Garnier, housing from *La Cité Industrielle*



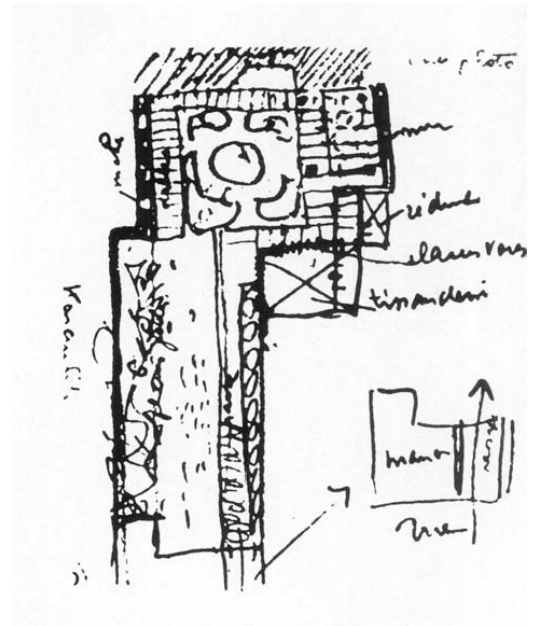
6.8 Romanian defensive structure



6.9 House, Shipka, Bulgaria



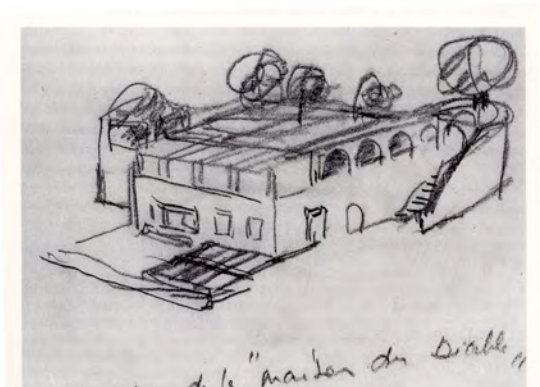
6.10 House, Kazanlık, Turkey



6.11 House, Kazanlık, plan



6.12 Villa Jeanneret, early sketch



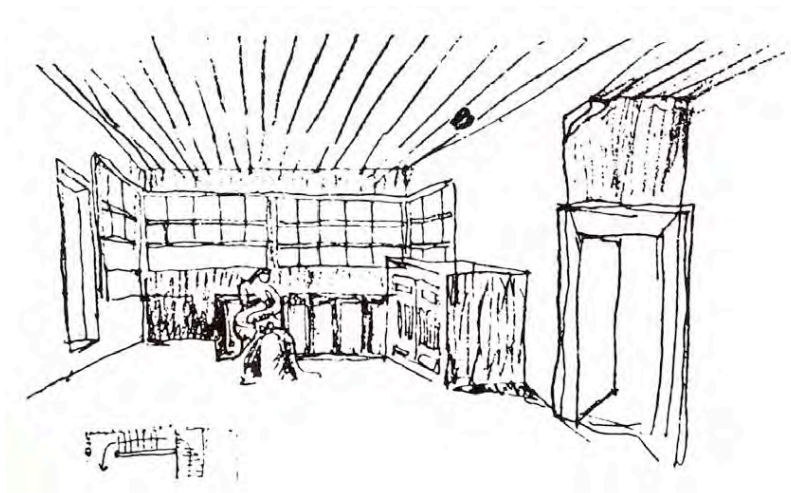
6.13 Farmhouse at Le Locle, proposed remodelling



6.14 Felix Klipstein house project



6.15 Marseilles Unité, apartment interior



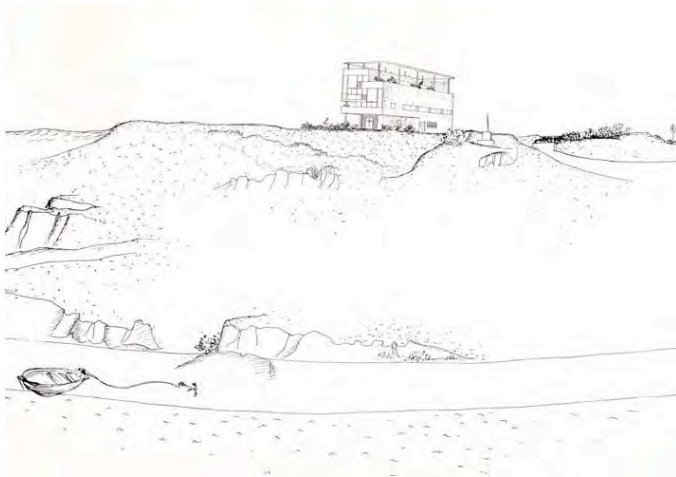
6.16 House, Turnovo, Bulgaria



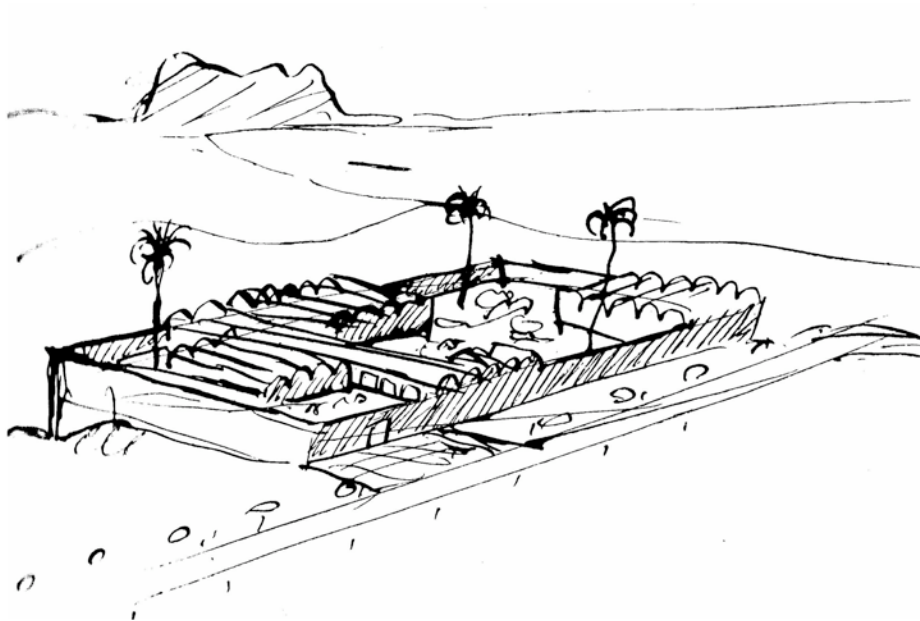
6.17 La Tourette, cell interior



6.18 Toulouse farm building



6.19 Villa Baizeau



6.20 Cherchell project



6.21 Villa Sarabhai, interior



6.22 Villa Sarabhai, rear façade



6.23 Secretariat, Chandigarh, front façade